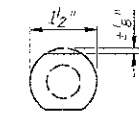
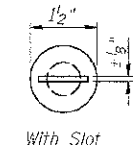
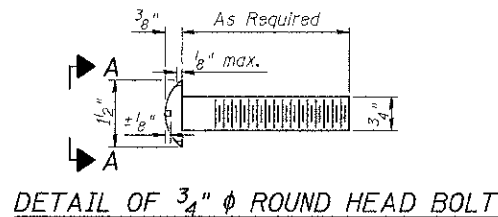
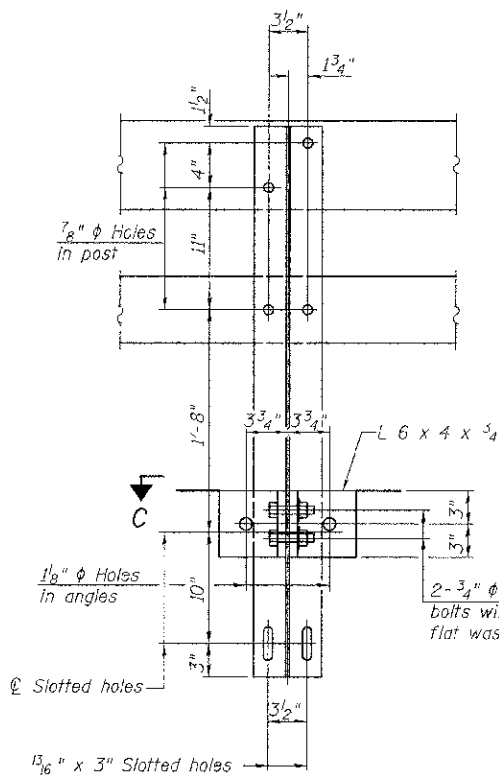


FOR RAIL POST SPACING SEE SH.#7 OF 12

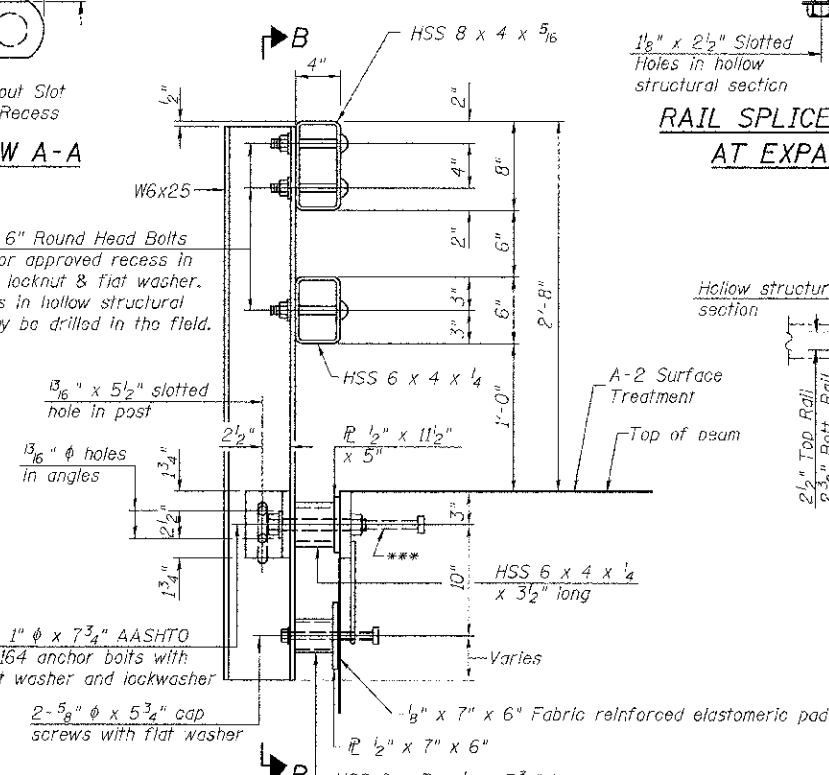


VIEW A-A

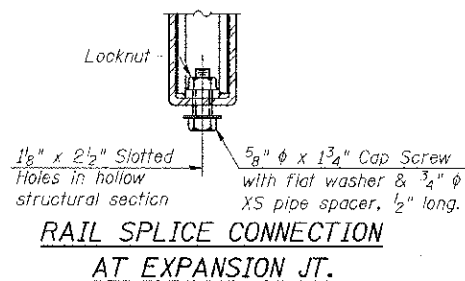
4- 3/4"  $\phi$  x 6" Round Head Bolts (With slot or approved recess in head) with locknut & flat washer. 7/8"  $\phi$  holes in hollow structural section may be drilled in the field.



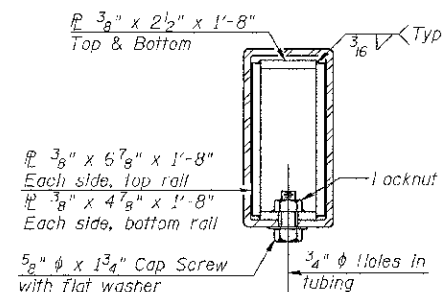
SECTION B-B



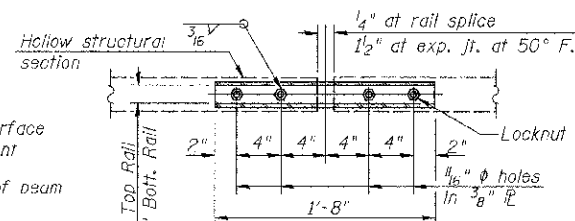
SECTION AT RAIL POST



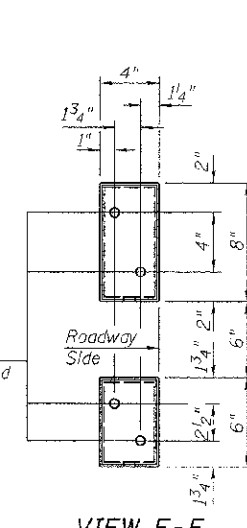
RAIL SPLICE CONNECTION AT EXPANSION JT.



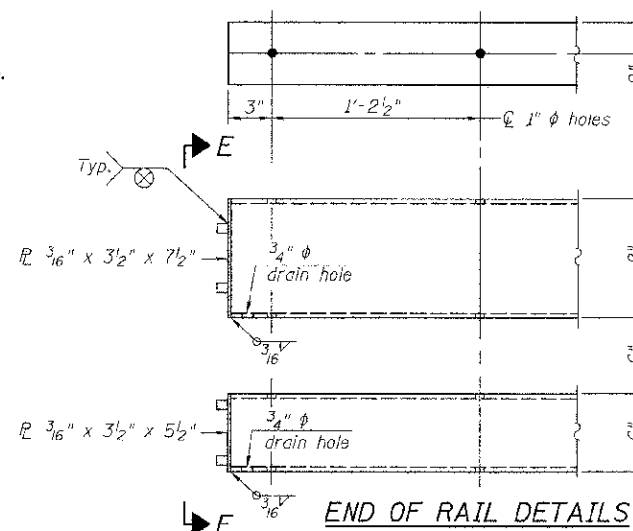
SECTION AT RAIL SPLICE



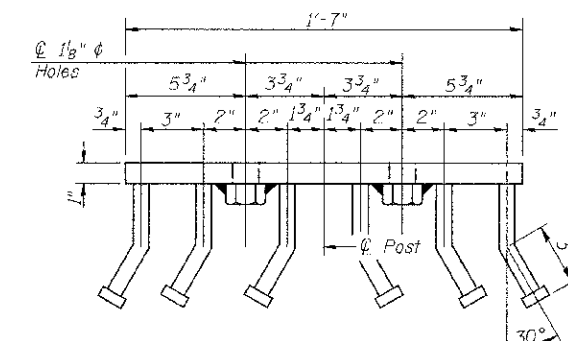
PLAN-BOTT. SPLICE TYPICAL



VIEW E-E



END OF RAIL DETAILS



VIEW D-D

Notes:  
 All field drilled holes shall be coated with an approved zinc rich paint before erection.  
 For multi-span bridges, sufficient 1/4" x 6" x 1'-2" galvanized steel shims shall be provided to align rail between adjacent spans. Cost included with Steel Railing, Type SM.  
 All steel rail members shall be galvanized according to Article 509.05 of the Standard Specifications.  
 \*\*\* The studs of the anchor devices shall be placed below the top reinforcement bars and the outermost longitudinal reinforcement bar shall be placed directly above the studs of the rail post anchor device.

BILL OF MATERIAL

Item	Unit	Quantity
Steel Railing, Type SM	FOOT	211

STEEL RAILING, TYPE SM  
 PIKE COUNTY  
 SECTION 10-00085-00-BR  
 C.H. 10 OVER BAY CREEK TRIBUTARY

SHEET NO. 6 12 SHEETS	ROUTE NO.	SECTION	COUNTY	TOTAL SHEETS	SHEET NO.
	CH 10	10-00085-00-BR	PIKE	23	12
	S.N. 075-3323		CONTRACT NO. 93582		
FED. ROAD DIST. NO. 7 ILLINOIS		FED. AID PROJECT BRS-0603(115)			