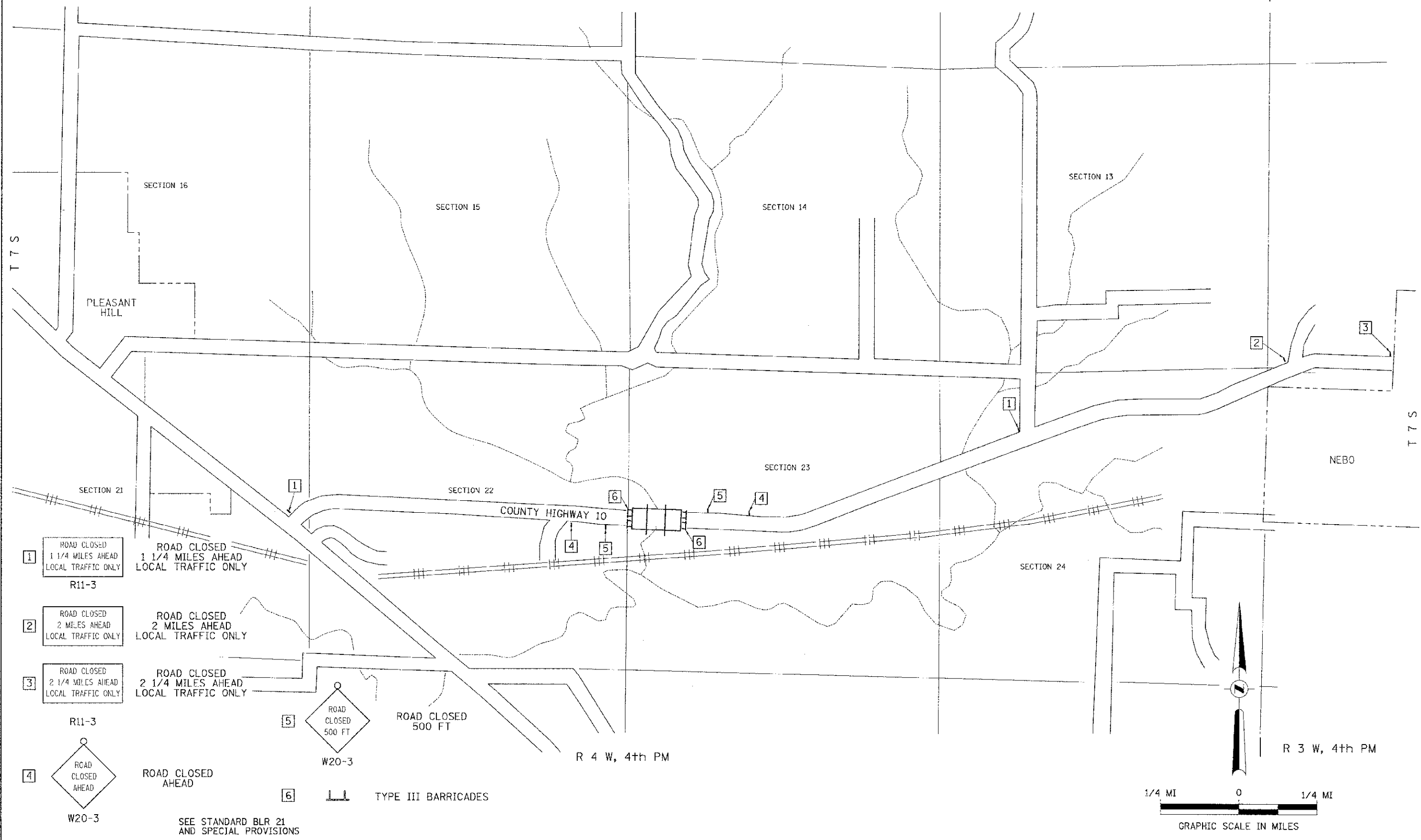


R 4 W, 4th PM

R 3 W, 4th PM

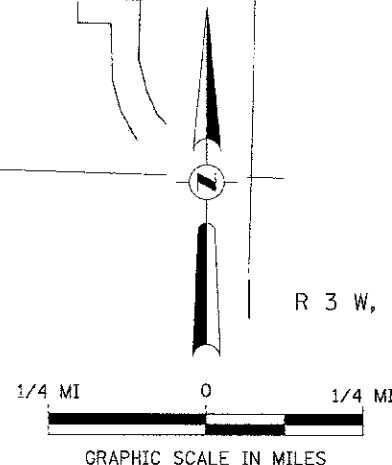
T 7 S

T 7 S



- 1 ROAD CLOSED  
1 1/4 MILES AHEAD  
LOCAL TRAFFIC ONLY  
R11-3
- 2 ROAD CLOSED  
2 MILES AHEAD  
LOCAL TRAFFIC ONLY
- 3 ROAD CLOSED  
2 1/4 MILES AHEAD  
LOCAL TRAFFIC ONLY  
R11-3
- 4 ROAD CLOSED  
AHEAD  
W20-3
- 5 ROAD CLOSED  
500 FT  
W20-3
- 6 ROAD CLOSED  
500 FT

SEE STANDARD BLR 21 AND SPECIAL PROVISIONS



FILE NAME = V:\9\truga\2852-Piku\2852i001.dgn	USER NAME = ethomas	DESIGNED -	REVISED -	<b>PIKE COUNTY COUNTY HIGHWAY 10 OVER BAY CREEK TRIBUTARY</b>	<b>TRAFFIC CONTROL PLAN</b>			F.A.S. RTE. 603	SECTION 10-00085-00-BR	COUNTY PIKE	TOTAL SHEETS 23	SHEET NO. 4
	PLOT SCALE = 1:8000 / in.	DRAWN -	REVISED -		SCALE: NONE	SHEET NO. 1 OF 1 SHEETS	STA. 58+00.00	TO STA. 62+00.00	CONTRACT NO. <b>93582</b>			
	PLOT DATE = 4/24/2012	CHECKED -	REVISED -		FED. ROAD DIST. NO. 7 ILLINOIS FED. AID PROJECT BR5-06031151							
		DATE = 03/02/09	REVISED -									