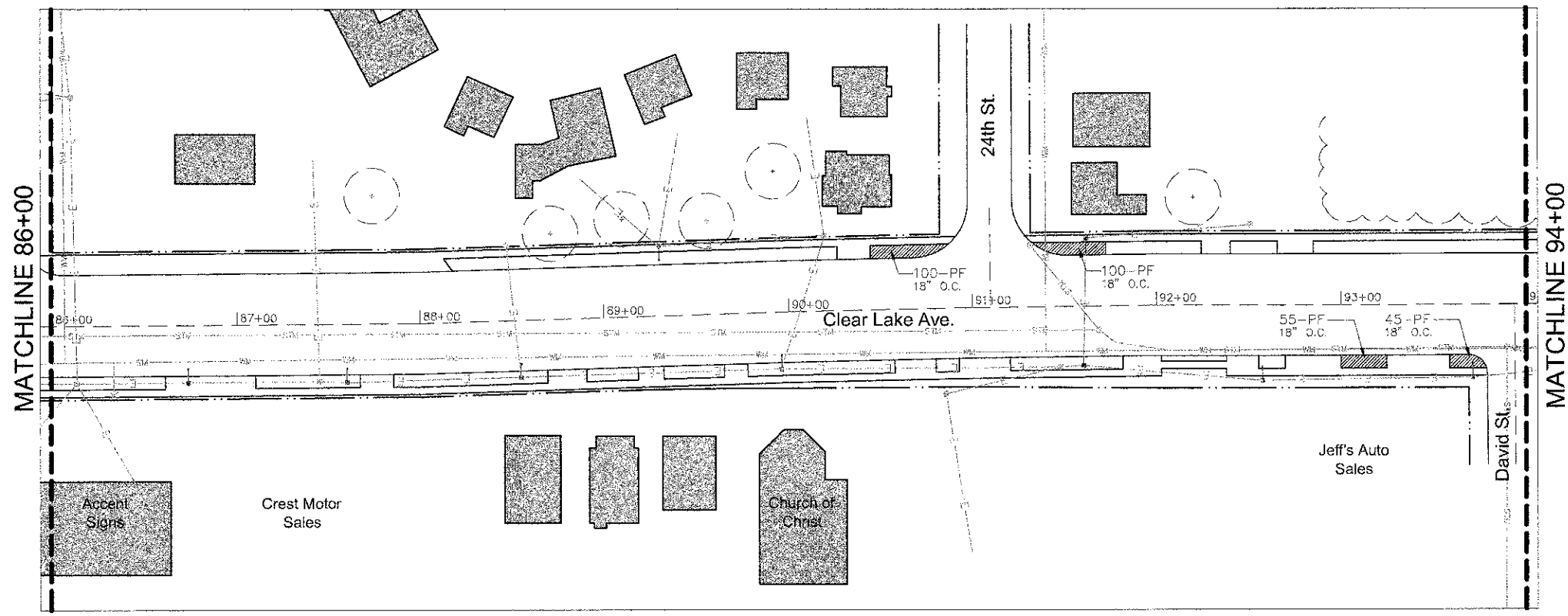


LEGEND

- Right-of-Way
- Property Line
- Existing Fence
- Street Light
- Overhead Electric
- Water Line
- Sanitary Sewer
- Existing Trees
- Proposed Shade Tree
- Proposed Evergreen Tree
- Proposed Ornamental or Columnar Tree
- Proposed Shrub
- Perennial Planting
- Ornamental Grasses
- Turf Seeding
- Buildings

* Mulch entire plant bed areas.



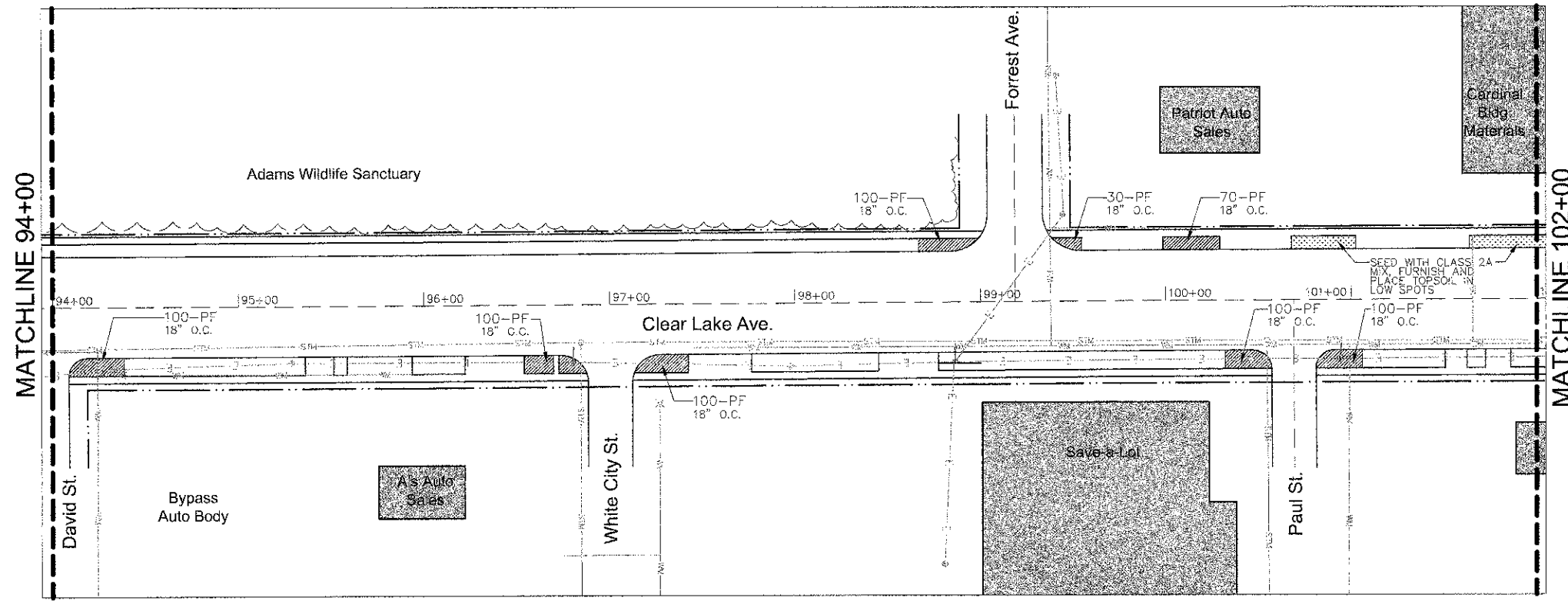
PLANT SCHEDULE - STA. 86+00 TO 102+00

| QTY | SYM | BOTANICAL NAME | COMMON NAME | SIZE |
|--------------------------------|-----|---|---------------------------|-----------------------|
| PERENNIALS OR ORNAMENTAL GRASS | | | | |
| 1,000 | PF | DAYLILY FLOWER MIX, 1/3 BLACK EYED STELLA DAYLILY (ORANGE), 1/3 PARDON ME DAYLILY (RED), AND 1/3 STELLA D'ORO DAYLILY (YELLOW). PLANT DAYLILIES IN ALTERNATING PATTERN TO MIX VARIETIES UNIFORMLY THROUGHOUT THE PLANT BED. | | |
| 333 | | HEMEROCALLIS 'BLACK EYED STELLA' | BLACK EYED STELLA DAYLILY | 1-GAL. WELL DEVELOPED |
| 333 | | HEMEROCALLIS 'PARDON ME' | PARDON ME DAYLILY | 1-GAL. WELL DEVELOPED |
| 334 | | HEMEROCALLIS 'STELLA D'ORO' | STELLA D'ORO DAYLILY | 1-GAL. WELL DEVELOPED |

SEEDING SCHEDULE - STA. 86+00 TO 102+00

| CLASS 2A - SALT TOLERANT ROADSIDE MIXTURE | | LBS/ACRE |
|---|--|----------|
| COMMON NAME | | |
| INFERN0 TALL FESCUE OR TARHEEL II TALL FESCUE | | 60 |
| PERENNIAL RYEGRASS | | 20 |
| AUDUBON RED FESCUE | | 30 |
| RESCUE 911 HARD FESCUE | | 30 |
| FULTS SALT GRASS1 | | 60 |

- NOTES:**
- CONTRACTOR TO CONTACT J.U.L.I.E. (1-800-892-0123) BEFORE DIGGING TO LOCATE UNDERGROUND UTILITIES.
 - ALL UTILITY LOCATIONS ARE PER UTILITY AND CITY OF SPRINGFIELD RECORD DRAWINGS. SPECIFIC LOCATIONS WERE NOT EXCAVATED FOR FIELD VERIFICATION.



SHEET LEGEND

