

ROUTE NO.	SECTION	COUNTY	TOTAL SHEETS	SHEET NO.
C.H. 16	07-00944-00-BR	CHAMPAIGN	45	30
SEA.		TO STA.		
F.H.W.A. REG.		ILLINOIS PROJECT		

**GENERAL NOTES**

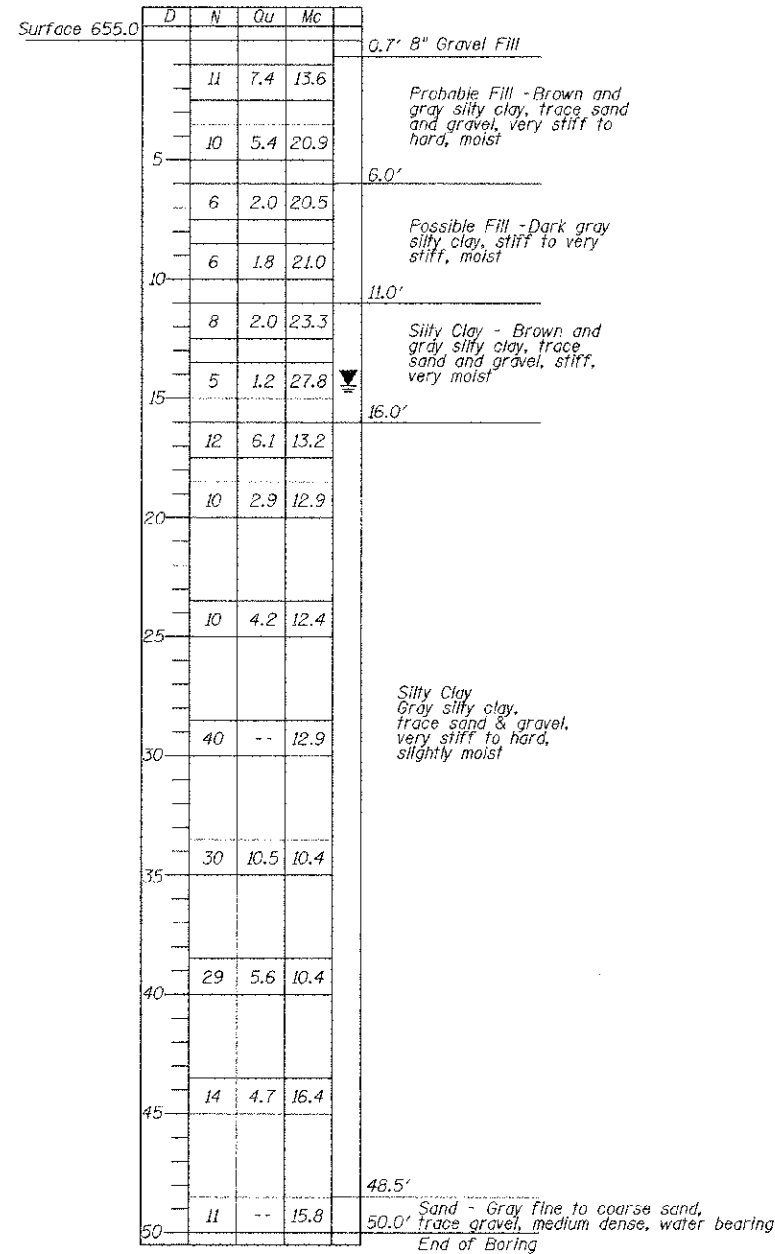
Boring Data is shown only as a guide to bidders in estimating soil conditions which may be encountered during construction.

The contractor shall drive 4 test piles in a permanent location, one at each abutment and one at each pier as directed by the Engineer before ordering the remainder of piles.

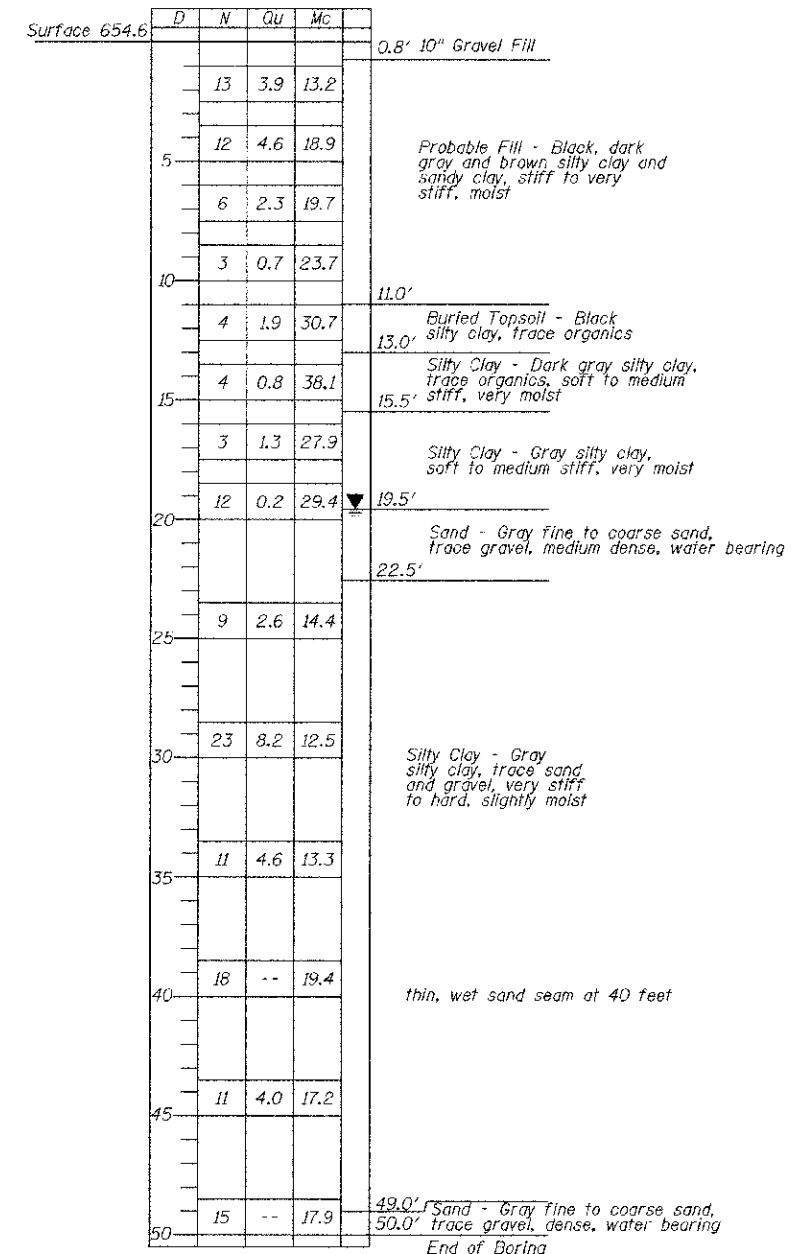
The contractor shall drive test piles to 110% of the nominal required bearing specified in production locations at the substructures specified or approved by the Engineer before ordering the remainder of the piles.

**BORING DATA**

- N - Standard Penetration Test - Blows per foot to drive 2" O.D. Split Spoon Sampler 12" with 140 lb. hammer falling 30"
- Qu - Unconfined Compression Strength - Tons/Sq.Ft.
- Mc - Water Content - Percentage of oven dry weight - %
- D - Depth
- P - Penetrometer
- B - Bulge Failure
- S - Shear Failure
- E - Estimated Value



BORING NO. B-1  
Sta. 9+10, 12' Rt.



BORING NO. B-2  
Sta. 10+90, 12' Lt.

BORING LOGS  
SECTION: 07-00944-00-BR  
CHAMPAIGN COUNTY  
Q STATION 10+00