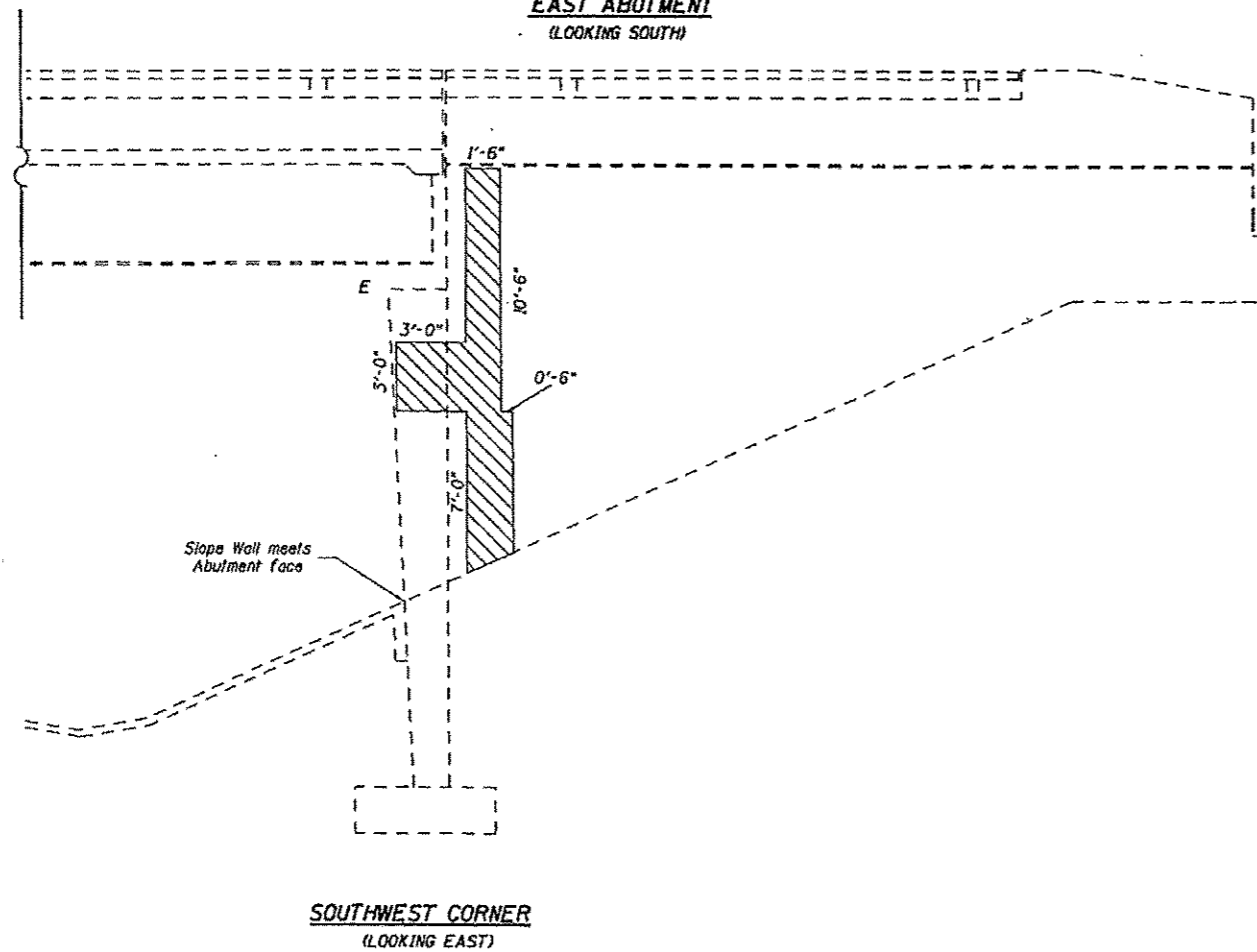
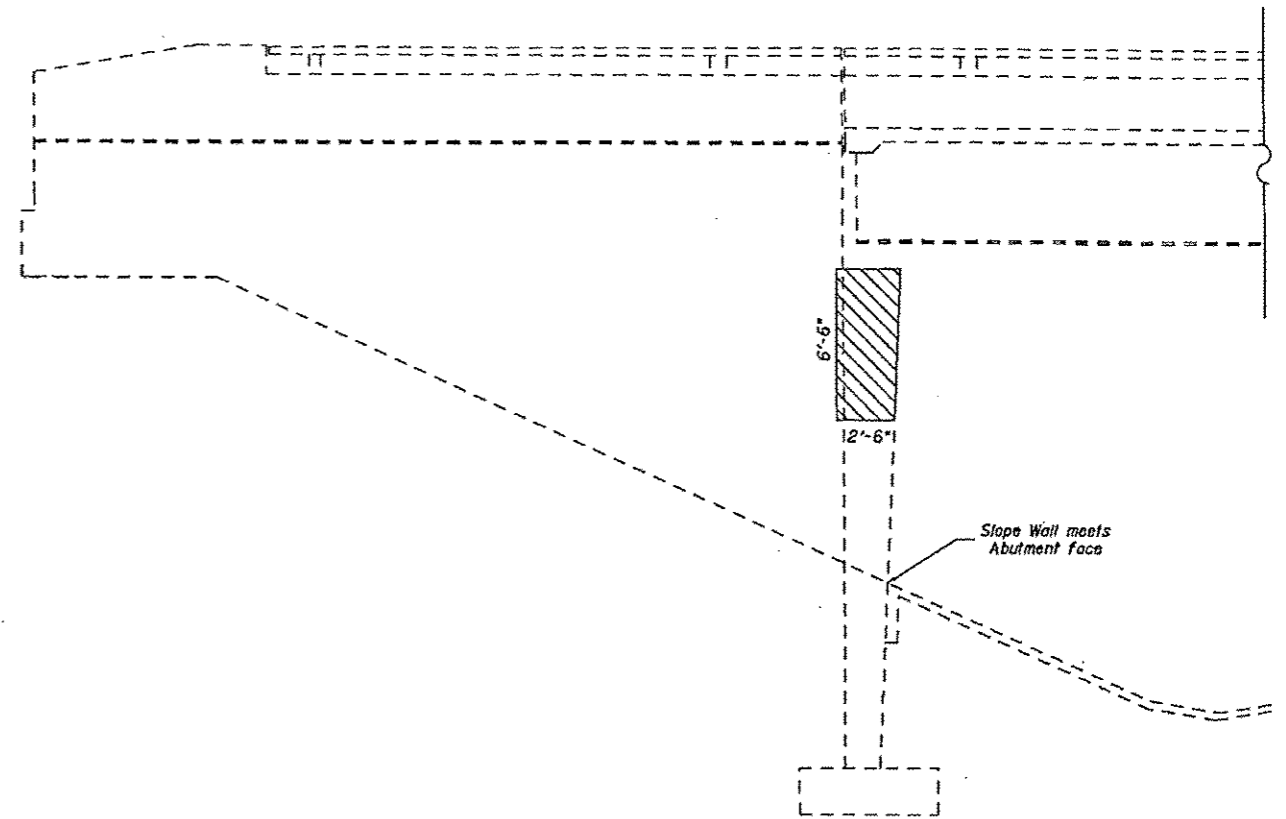


**EAST ABUTMENT**  
(LOOKING SOUTH)



**SOUTHWEST CORNER**  
(LOOKING EAST)



**SOUTHEAST CORNER**  
(LOOKING WEST)



Structural Repair of Concrete  $\leq$  5"

**BILL OF MATERIAL**

Item	Unit	Total
Structural Repair of Concrete (Depth $\leq$ 5")	Sq. Ft.	419

**EAST ABUTMENT**  
**SUBSTRUCTURE REPAIRS**  
FAP 849 (IL. 142) OVER FAI 64  
STA. 2857+33.25  
S.N. 041-0062

\*\*09 CMA BRIDGE REPAIR 2013-2

FILE NAME *	USER NAME = walkerna	DESIGNED - RAW	REVISED -
c:\pwworking\pwwalkerna\10398332178333\1311.plt	3/10/2012	DRAWN - RAW	REVISED -
PLOT SCALE = 0.8427' / 1" =		CHECKED - TWH	REVISED -
PLOT DATE = 5/3/2012		DATE - 4/10/2012	REVISED -

**STATE OF ILLINOIS**  
**DEPARTMENT OF TRANSPORTATION**

**SUBSTRUCTURE REPAIRS**

SCALE: SHEET 9 OF 9 SHEETS STA. TO STA.

F.A.P. RTE.	SECTION	COUNTY	TOTAL SHEETS	SHEET NO.
849	**	JEFFERSON	9	9
			CONTRACT NO. 78308	
ILLINOIS FED. AID PROJECT				