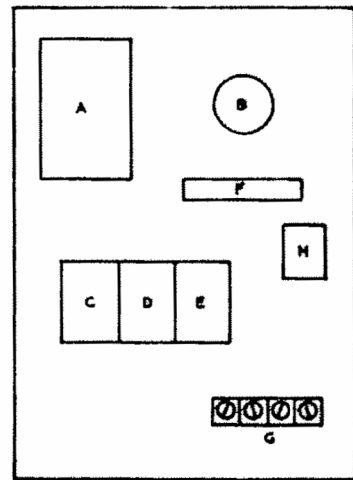


**GENERAL NOTES**

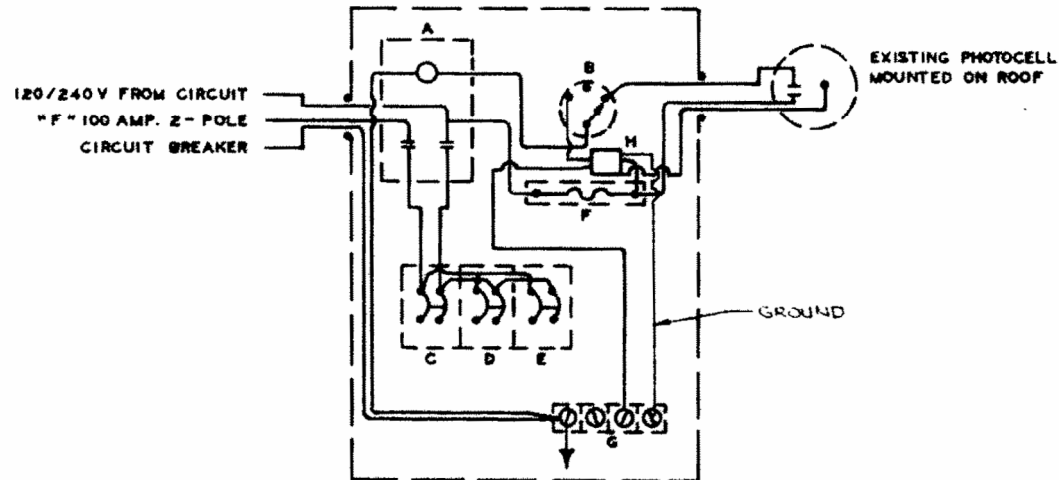
THIS SECTION SHALL BE CONSTRUCTED IN ACCORDANCE WITH THE PLANS, THE "STANDARD SPECIFICATIONS FOR ROAD AND BRIDGE CONSTRUCTION" ADOPTED OCTOBER 1, 1993; THE "STANDARD SPECIFICATIONS FOR TRAFFIC CONTROL ITEMS", ADOPTED FEBRUARY 1, 1984; THE "SUPPLEMENTAL SPECIFICATIONS AND RECURRING SPECIAL PROVISIONS" AND THE SPECIAL PROVISIONS INCLUDED IN THE PROPOSAL.

THE WORK INCLUDED IN THIS SECTION CONSISTS OF THE FURNISHING, DELIVERING, INSTALLING, TESTING AND PLACING IN SATISFACTORY SERVICE THE LIGHTING SYSTEM SHOWN ON THE PLANS.

- A - 60 AMP. 2- POLE CONTACTOR
- B - 3 POSITION SELECTOR SWITCH
- CDE - 30 AMP. 2-POLE CIRCUIT BREAKER
- F - 10 AMP. CARTRIDGE FUSE & HOLDER OR 10 AMP. CIRCUIT BREAKER
- G - GROUND BUS
- H - SURGE PROTECTOR



**OUTDOOR LIGHTING CONTROL CABINET**



**WIRING DIAGRAM**

**CONTROL INSTALLATION  
DETAIL**

SUMMARY OF QUANTITIES			
CODE NO.	ITEM	UNIT	QUANTITY
			MARION CO.
			3FT-12
			CONSTRUCTION TYPE CODE
661003	UNIT DUCT, 2-600V XLP # 6, 1" POLYETHYLENE	LIN. FT.	6300
660602	BARE COPPER WIRE, 1/C NO. 6	LIN. FT.	6300
664009	CONTROL INSTALLATION, SPECIAL	EACH	2
670001	SIGN LIGHTING (HIGH PRESSURE SODIUM)	LIN. FT.	52.5
660501	ELECTRIC CABLE IN CONDUIT, 600V (XLP-TYPE USE), 1/C NO. 12	LIN. FT.	1440
662001	TRENCH AND BACKFILL FOR ROADWAY LIGHTING	LIN. FT.	6080
645001	LIGHT POLE FOUNDATION	EACH	18
665003	LIGHT TOWER FOUNDATION, 48" DIAMETER	LIN. FT.	64.5
667544	LIGHT POLE STEEL, 45 FT. H.H. TENON MOUNT	EACH	18
668002	LIGHT TOWER, 80' MOUNTING HEIGHT, LUMINAIRE MOUNT - 6	EACH	4
669003	LUMINAIRE SODIUM VAPOR, HIGH MAST, VERTICAL MOUNT, 400 WATT	EACH	24
669052	LUMINAIRE SODIUM VAPOR, VERTICAL MOUNT, 250 WATT	EACH	18
654001	MOBILIZATION	L. SUM	1
LO4711	REMOVE AND SALVAGE POLE MOUNTED LIGHTS	EACH	6

FOR REFERENCE