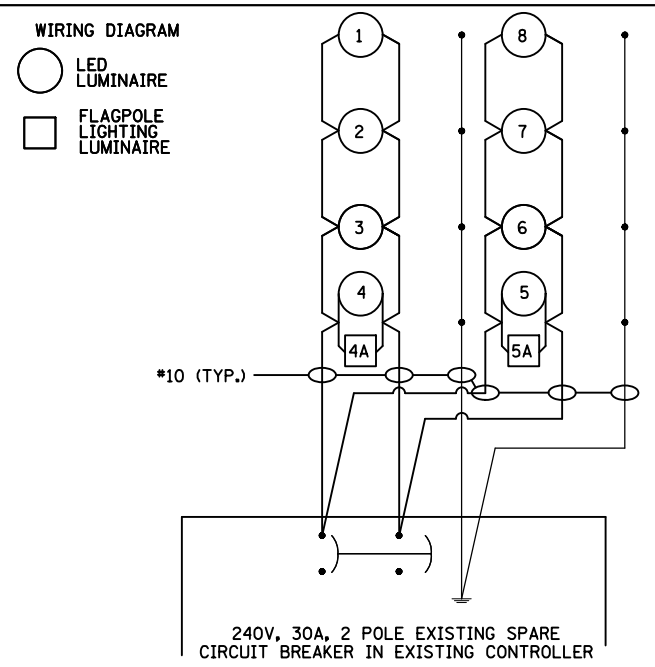
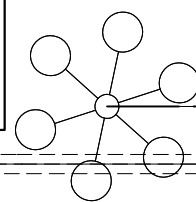
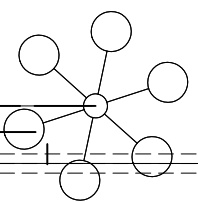
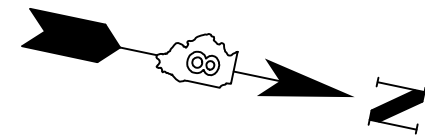


1810A

18

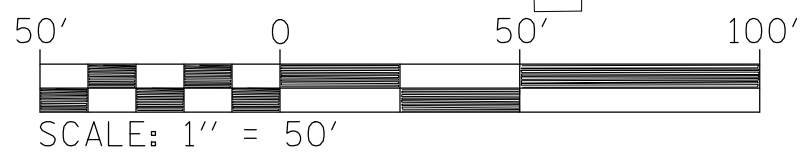
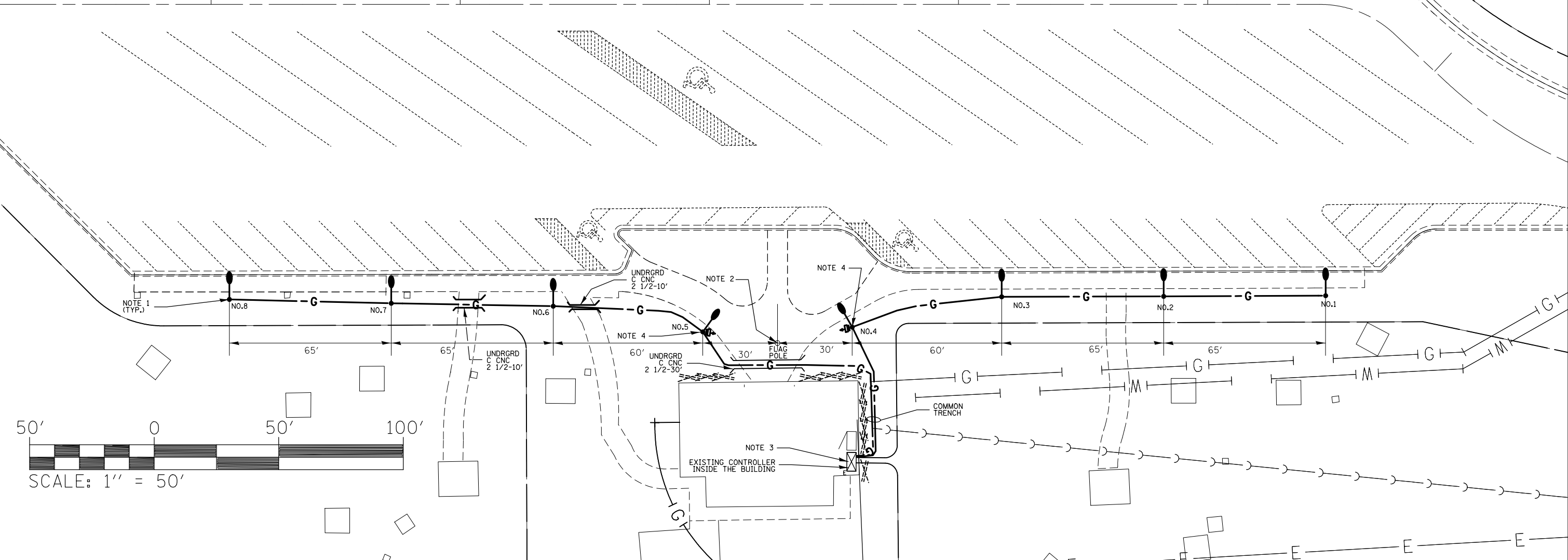


- NOTES
1. POLES SHALL BE SET BACK, 3 FT FROM THE EDGE OF SIDEWALK. THE LOCATION SHALL BE APPROVED BY THE ENGINEER.
 2. POLE LOCATIONS ARE DIMENSIONED FROM THE CENTER OF THE EXISTING PATH.
 3. SEE SPECIAL PROVISION "CONDUIT INTO BUILDING" FOR DESCRIPTION OF WORK.
 4. SEE "WIRING, LIGHTING UNIT AND FLAGPOLE LUMINAIRE DETAIL(S)" SHEET FOR FLAGPOLE LUMINAIRE MOUNTING DETAILS.
 5. CONSTRUCTION LIMITS CONSIST OF TURF:
 - A. EXTENDING FROM SIDEWALK -15'
 - B. EXTENDING FROM BUILDING, EXCEPT FOR "CONDUIT INTO BUILDING" GREATER THAN 5' & LESS THAN 20'
 - C. FOR "CONDUIT INTO BUILDING"(CENTERLINE)-15'



15

120



FILE NAME =	USER NAME = prestonme	DESIGNED -	REVISED -
et:\pw\work\p\dot\prestonme\d0287033\d876f45-sht-11ght.dgn		DRAWN -	REVISED -
	PLOT SCALE = 48.0000' / in.	CHECKED -	REVISED -
	PLOT DATE = 5/7/2012	DATE -	REVISED -

STATE OF ILLINOIS
DEPARTMENT OF TRANSPORTATION

POST OAK REST AREA LIGHTING
NB LIGHTING PLAN

SCALE: SHEET NO. OF SHEETS STA. TO STA.

F.A.I. RTE.	SECTION	COUNTY	TOTAL SHEETS	SHEET NO.
57	(61-2)RA-L	MARION	14	5
CONTRACT NO. 76F45				
FED. ROAD DIST. NO. ILLINOIS FED. AID PROJECT				