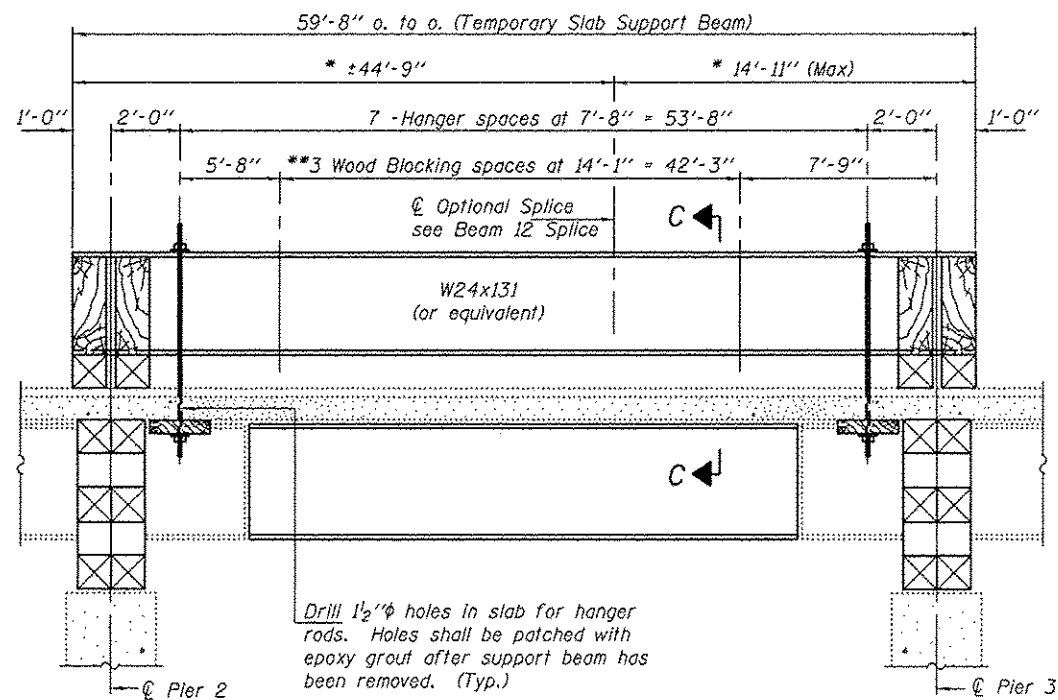
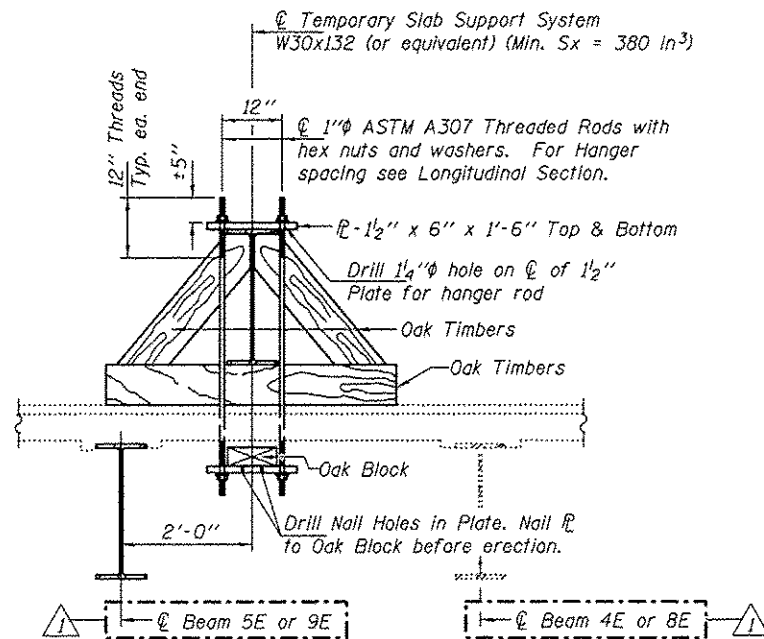


LONGITUDINAL SECTION AT BEAMS 5E & 9E
SUGGESTED TEMPORARY SLAB SUPPORT SYSTEM

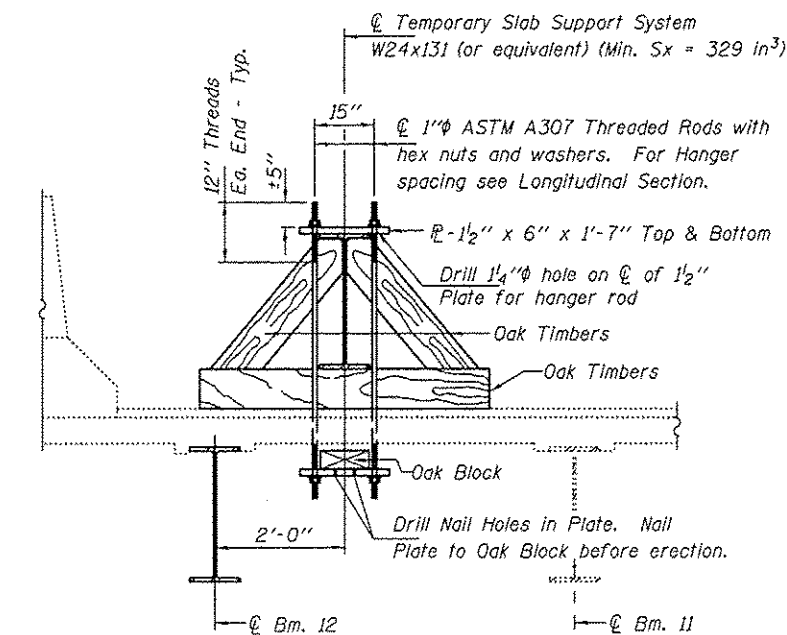
* These dimensions may vary for available beams in stock.



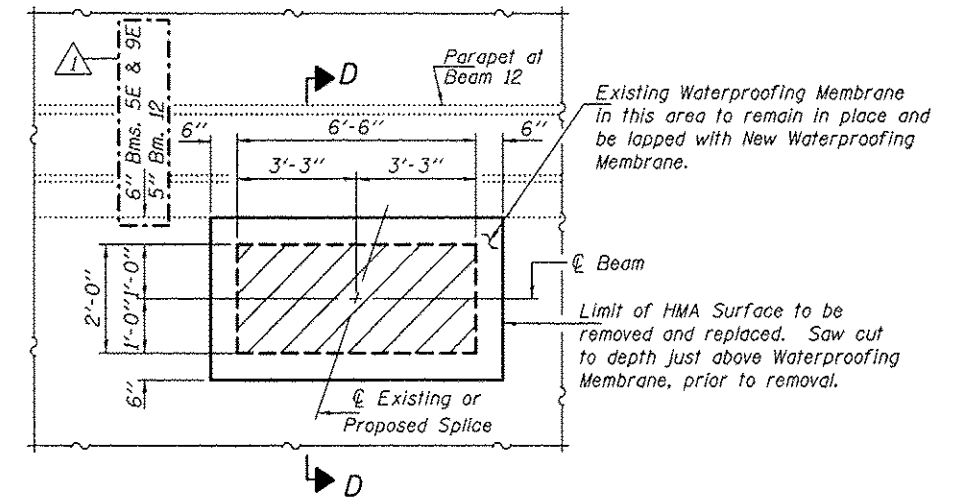
LONGITUDINAL SECTION AT BEAM 12
SUGGESTED TEMPORARY SLAB SUPPORT SYSTEM



SECTION B-B



SECTION C-C



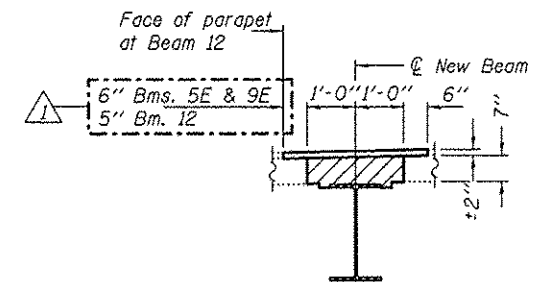
TYPICAL CONCRETE & HMA
SURFACE REMOVAL AND REPLACEMENT

Notes:

Hatched areas indicate concrete sections to be removed and replaced. Perimeters of concrete removal areas shall be saw cut 3/4" prior to the removal of concrete.

Reinforcement shall be cut only if required for fitting bolts. Cut reinforcement shall be spliced as directed by the Engineer. Cost shall be included with Concrete Removal.

The cost of removing and replacing the existing HMA wearing surface, waterproofing membrane, and saw cutting shall be included with Concrete Removal.



SECTION D-D