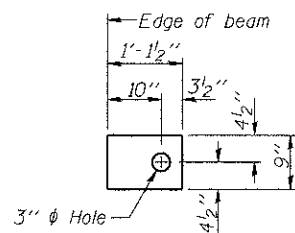


**FABRIC BEARING PAD**  
(Interior)

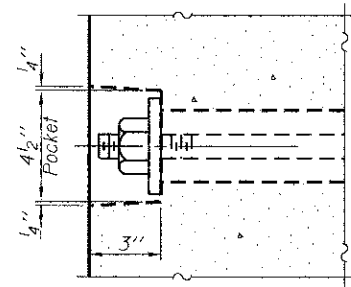


**FABRIC BEARING PAD**  
(Exterior)

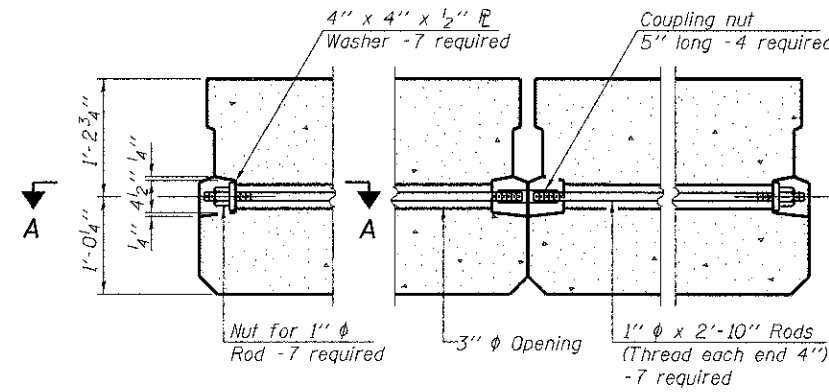
**FIXED**

Notes:

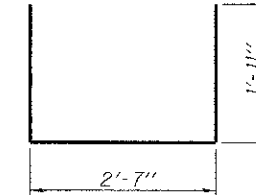
- All bearing pads shall be 1" thick.
- Omit holes when using expansion bearings.
- Expansion bearing pad shall be bonded to the substructure.



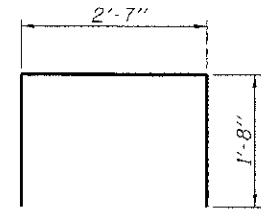
**SECTION A-A**



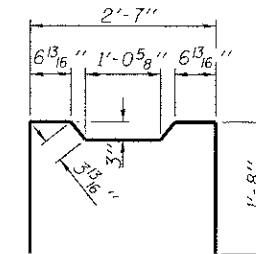
**TYPICAL TRANSVERSE TIE ASSEMBLY**



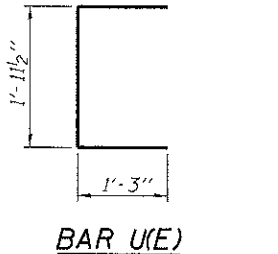
**BAR S(E)**



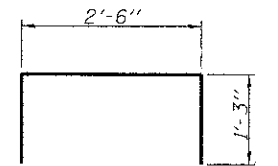
**BAR S1(E)**



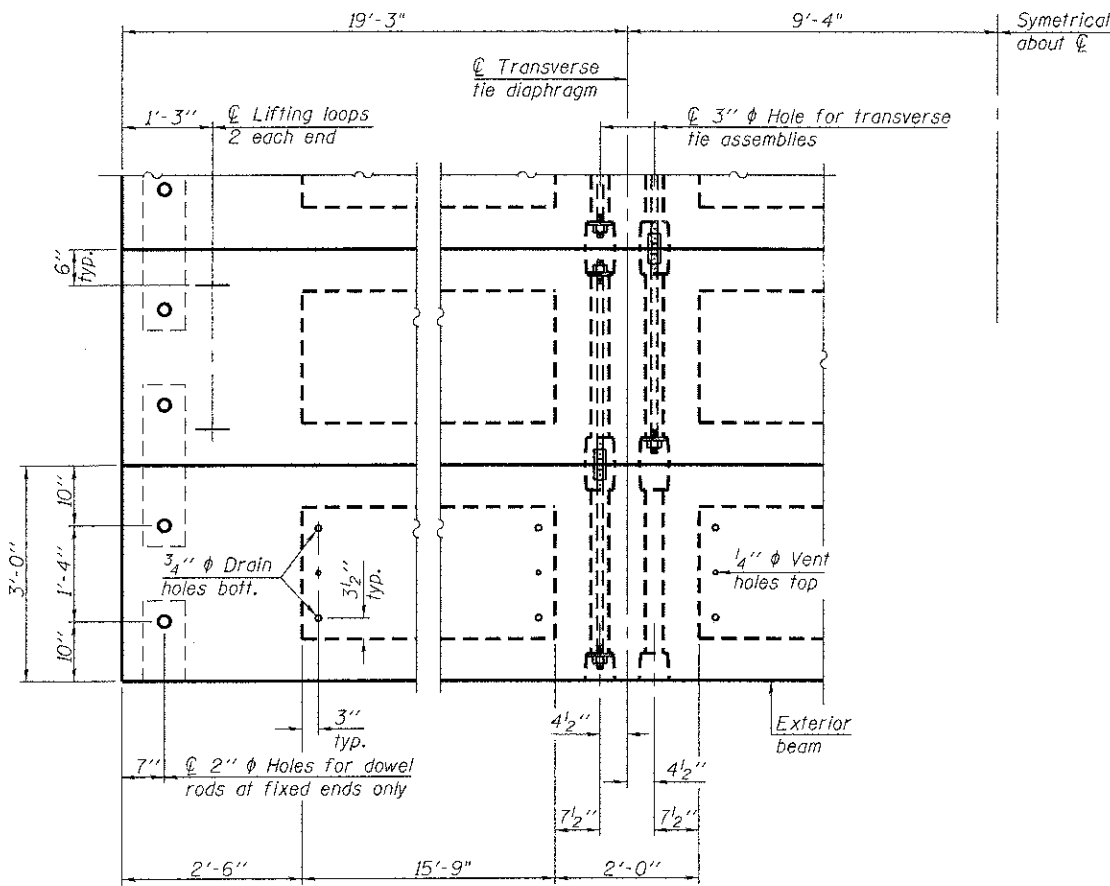
**BAR S2(E)**



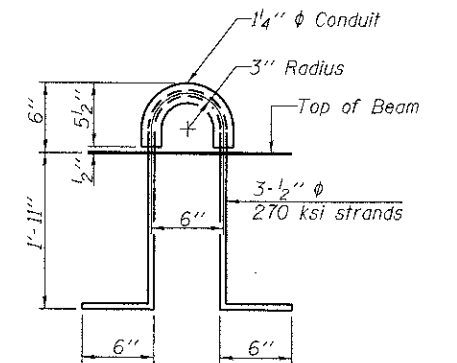
**BAR U(E)**



**BAR U1(E)**



**PLAN VIEW**



**LIFTING LOOP DETAIL**

**NOTES**

- Prestressing steel shall be uncoated high strength, low relaxation 7-wire strand, Grade 270. The nominal diameter shall be 1/2" and the nominal cross-sectional area shall be 0.153 sq. in.
- The 1" diameter rods in the transverse tie assembly shall be tightened to a snug fit and the threads set. Pockets on exterior faces of bridge shall be filled with grout after transverse tie assembly is in place.
- Reinforcement bars shall conform to ASTM A 706, Grade 60. (See Special Provisions).
- Two 1/2" fabric adjusting shims of the dimensions of the exterior bearing pad shall be provided for each bearing pad location.
- A minimum 2 1/2" diameter lifting pin shall be used to engage the lifting loops during handling.
- Corrosion Inhibitor, per Article 1020.05(b)(12) and 1021.06 of the Standard Specifications, shall be used in the concrete for precast prestressed concrete deck beams.
- Compressive strength of prestressed concrete, f'c, shall be 6000 psi.
- Compressive strength of prestressed concrete at release, f'ci, shall be 5000 psi.

**BILL OF MATERIAL**

Material	Sq. Ft.	Quantity
Precast Prestressed Conc. Deck Ems. (27" depth)		1,201

Note: Connect beams in pairs with the transverse tie configuration shown.

PD-2736-0D

7-1-10

McDonough Associates Inc.  
Engineers / Architects  
180 North Station Ave., Chicago, Illinois 60601

DESIGNED - JCE  
CHECKED - GEK  
DRAWN - JCE  
CHECKED - GEK  
PLOT SCALE = 1/8" = 1'-0"  
PLOT DATE = 05/14/12

DESIGNED - JCE  
CHECKED - GEK  
DRAWN - JCE  
CHECKED - GEK  
PLOT SCALE = 1/8" = 1'-0"  
PLOT DATE = 05/14/12

REVISIONS  
REVISIONS  
REVISIONS  
REVISIONS

STATE OF ILLINOIS  
DEPARTMENT OF TRANSPORTATION

27" x 36" PPC DECK BEAM DETAILS  
STRUCTURE NO. 049-6751

SHEET NO. 7 OF 16 SHEETS

F.A. RTE.	SECTION	COUNTY	TOTAL SHEETS	SHEET NO.
	09-00010-00-BR	LAKE	41	20
CONTRACT NO. 63716				
ILLINOIS FED. AID PROJECT				