

08-03-12 LETTING ITEM 002

FOR INDEX OF SHEETS, SEE SHEET NO. 2

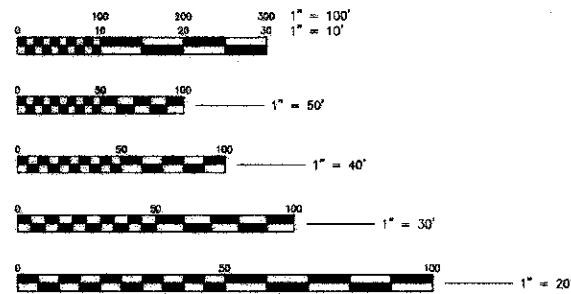
FOR INDEX OF HIGHWAY STANDARDS, SEE SHEET NO. 2

PROJECT LOCATED IN THE VILLAGE OF ROBBINS

**TRAFFIC DATA**  
 CLAIRE BOULEVARD  
 POSTED AND DESIGN SPEED = 30 MPH  
 2008 ADT = 8,100

**DESIGN DESIGNATION**  
 ROADWAY CLASSIFICATION: COLLECTOR

BAXTER & WOODMAN, INC.  
 STATE OF ILLINOIS - PROFESSIONAL DESIGN FIRM  
 LICENSE NO. 184-001121  
 EXPIRES 4/30/2013



FULL SIZE PLANS HAVE BEEN PREPARED USING STANDARD ENGINEERING SCALES. REDUCED SIZED PLANS WILL NOT CONFORM TO STANDARD SCALES. IN MAKING MEASUREMENTS ON REDUCED SIZE PLANS, THE ABOVE SCALES SHALL BE USED.

J.U.L.I.E. DESIGN STAGE REQUEST  
 DIG. No. A1582972



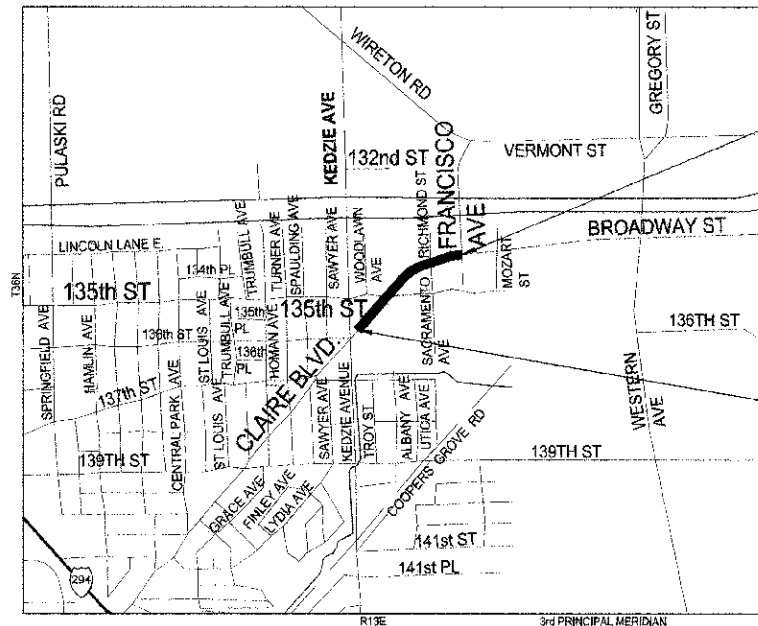
CONTACT JULIE AT 817 OR 800-892-0123 WITH THE FOLLOWING:  
 COUNTY= COOK  
 CITY-TOWNSHIP= ROBBINS - BREMEN  
 SEC. & 1/4 SEC. NO.= T30N, R13E  
 48 HOURS(2 working days) BEFORE YOU DIG

CONTRACT NO. 63692

STATE OF ILLINOIS  
 DEPARTMENT OF TRANSPORTATION  
 DIVISION OF HIGHWAYS

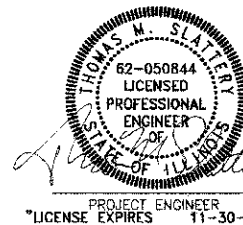
PLANS FOR PROPOSED  
**FEDERAL AID HIGHWAY**  
 FAU 1596 (CLAIRE BOULEVARD)  
 KEDZIE AVENUE TO FRANCISCO AVENUE  
 RESURFACING  
 SECTION: NO. 10-00026-00-RS  
 PROJECT NO.: M-9003 (963)  
 VILLAGE OF ROBBINS  
 COOK COUNTY  
 JOB NO.: C-91-713-10

LOCATION MAP  
 (NOT TO SCALE)



BREMEN AND WORTH TOWNSHIPS  
 GROSS LENGTH OF IMPROVEMENT = 2,037 FEET OR 0.386 MILES  
 NET LENGTH OF IMPROVEMENT = 2,037 FEET OR 0.386 MILES

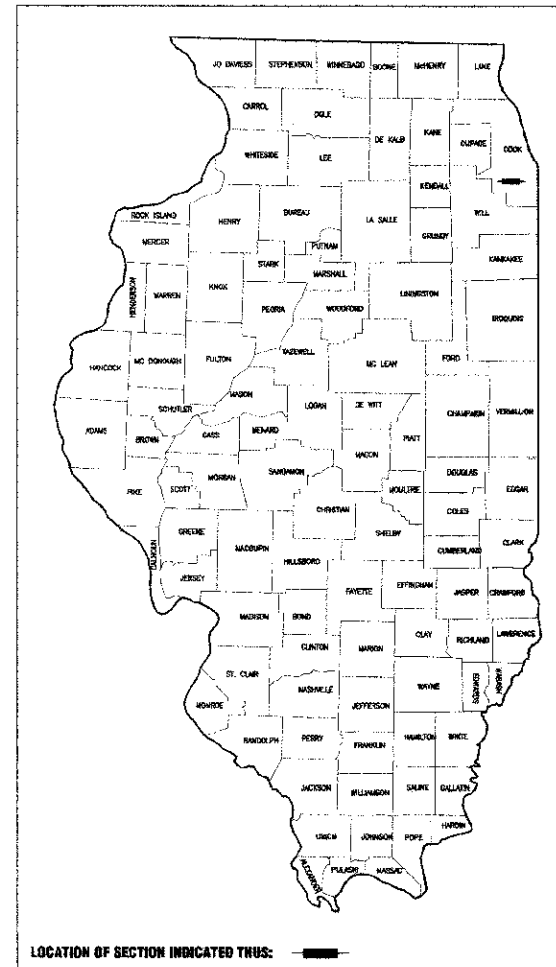
BAXTER  
  
 WOODMAN  
 Consulting Engineers



PROJECT ENGINEER  
 \*LICENSE EXPIRES 11-30-2013\*

FAU ROUTE NO.	SECTION	COUNTY	TOTAL SHEETS	SHEET NO.
1596	10-00026-00-RS	COOK	21	1

ILLINOIS PROJECT  
 CONTRACT NO. 63692



LOCATION OF SECTION INDICATED THUS: [thick black line]

STATE OF ILLINOIS  
 DEPARTMENT OF TRANSPORTATION  
 DIVISION OF HIGHWAYS

APPROVED May 17 2012  
Jonathan Wang  
 VILLAGE OF ROBBINS,  
 VILLAGE ADMINISTRATOR

PASSED May 21 2012  
Colbert  
 DISTRICT 1 ENGINEER OF  
 LOCAL ROADS & STREETS

RELEASING FOR BID  
 BASED ON LIMITED  
 REVIEW May 23 2012  
Deane M. O'Keefe  
 DEPUTY DIRECTOR OF  
 HIGHWAYS, REGION 1 ENGINEER

PRINTED BY THE AUTHORITY  
 OF THE STATE OF ILLINOIS

PROJECT NO: 100493.40 DATE: 04-20-12

U.S. CRISTAL, LIVES PAPER, TONER, C. ARE BELIEVED TO BE IN COMPLIANCE WITH THE RECYCLING ACT OF 1974. © 2006, Baxter & Woodman, Inc. State of Illinois - Professional Design Firm License No. 184-001121 - Expires 4/30/13 PROGRAM AND OFFICE ENGINEER: CHARLES RIDDLE, P.E. 708-705-4406 SCHAMBURG, IL

### HIGHWAY STANDARDS

000001-06	STANDARD SYMBOLS, ABBREVIATIONS AND PATTERNS
280001-06	TEMPORARY EROSION CONTROL SYSTEMS
424001-06	PERPENDICULAR CURB RAMPS FOR SIDEWALKS
424006	DIAGONAL CURB RAMPS FOR SIDEWALKS
424011	CORNER PARALLEL CURB RAMPS FOR SIDEWALKS
424016	MID-BLOCK CURB RAMPS FOR SIDEWALKS
424021	DEPRESSED CORNER FOR SIDEWALKS
424026	ENTRANCE/ALLEY PEDESTRIAN CROSSINGS
424031	MEDIAN PEDESTRIAN CROSSINGS
442201-03	CLASS C & D PATCHES
602011-02	CATCH BASIN, TYPE C
602301-03	INLET, TYPE A
602401-03	MANHOLE - TYPE A
604001-03	FRAMES AND LIDS, TYPE 1
604091-02	FRAME AND GRATE, TYPE 24
606001-04	CONCRETE CURB TYPE B AND COMBINATION CONCRETE CURB AND GUTTER
701301-04	LANE CLOSURE, 2L, 2W, SHORT TIME OPERATIONS
701311-03	LANE CLOSURE, 2L, 2W MOVING OPERATIONS - DAY ONLY
701501-06	URBAN LANE CLOSURE, 2L, 2W UNDIVIDED
701701-08	URBAN LANE CLOSURE, MULTILANE INTERSECTION
701801-05	LANE CLOSURE, MULTILANE 1W OR 2W CROSSWALK OR SIDEWALK CLOSURE
701901-02	TRAFFIC CONTROL DEVICES
885001-01	DETECTOR LOOP INSTALLATIONS
885006-01	TYPICAL LAYOUTS FOR DETECTOR LOOPS

### BENCHMARKS

- BM #1 TOP BOLT OF FIRE HYDRANT AT SOUTHWEST CORNER OF  
CLAIRE BOULEVARD AND 135TH STREET, STA 83+24, 45' LT  
ELEV = 601.00 (NAVD 88)
- BM #2 TOP BOLT OF FIRE HYDRANT AT NORTHEAST CORNER OF  
CLAIRE BOULEVARD AND FRANCISCO AVENUE, STA 100+41, 24' RT  
ELEV = 599.81 (NAVD 88)

### INDEX OF SHEETS

SHEET NO.	TITLE
1	COVER SHEET
2	HIGHWAY STANDARDS AND INDEX OF SHEETS
3	GENERAL NOTES
4	SUMMARY OF QUANTITIES
5-6	TYPICAL SECTIONS
7-11	PLAN AND PROFILES: CLAIRE BOULEVARD
12	BD-08 DETAILS FOR FRAMES AND LIDS ADJUSTMENT WITH MILLING
13	BD-24 CURB OR CURB AND GUTTER REMOVAL AND REPLACEMENT
14	BD-32 BUTT JOINT AND HMA TAPER DETAILS
15	TC-10 TRAFFIC CONTROL AND PROTECTION FOR SIDE ROADS, INTERSECTIONS, AND DRIVEWAYS
16	TC-13 DISTRICT 1 TYPICAL PAVEMENT MARKINGS
17	TC-22 ARTERIAL ROAD INFORMATION SIGN
18	TS-07 DETECTOR LOOP INSTALLATION DETAIL FOR ROADWAY RESURFACING
19-21	CROSS SECTIONS: CLAIRE BOULEVARD

\PROJECT\LAKEVIEW\10403-CLAIRE\BENCHMKS-5\INDEX\INDEX.DWG (10/01/12) - GEN\015.DWG (10/01/12)  
 Project: 5/1/2012 10:09 PM By: BCD/AR  
 Copyright © 2012, by Becker & Woodman, Inc.  
 State of Illinois - Professional Design Firm  
 License No. - 154-001121 - Expires 4-30-15



DESIGNED - REW	REVISED -
DRAWN - UKB	REVISED -
CHECKED - LDH	REVISED -
DATE - 04-20-12	REVISED -

STATE OF ILLINOIS  
DEPARTMENT OF TRANSPORTATION

HIGHWAY STANDARDS, BENCHMARKS  
AND INDEX OF SHEETS

SCALE: PROJECT NO: 100493 STA. TO STA.

F.A.U. RTE.	SECTION	COUNTY	TOTAL SHEETS	SHEET NO.
1596	10-00026-00-RS	COOK	21	2
FED. ROAD DIST. NO. 1 ILLINOIS			CONTRACT NO.: 63692	

## GENERAL NOTES

1. ALL CONSTRUCTION SHALL BE DONE IN ACCORDANCE WITH THE DETAILS IN THE PLANS, THE SPECIAL PROVISIONS INCLUDED IN THE CONTRACT DOCUMENTS, AND THE JANUARY 1, 2012 EDITION OF THE FOLLOWING STATE OF ILLINOIS SPECIFICATIONS: "THE STANDARD SPECIFICATIONS FOR ROAD AND BRIDGE CONSTRUCTION" (REFERRED TO AS THE "STANDARD SPECIFICATIONS"), THE "SUPPLEMENTAL SPECIFICATIONS AND RECURRING SPECIAL PROVISIONS", THE "MANUAL ON UNIFORM TRAFFIC CONTROL DEVICES FOR STREETS AND HIGHWAYS", THE "MANUAL OF TEST PROCEDURES FOR MATERIALS" AND THE "STANDARD SPECIFICATIONS FOR WATER AND SEWER MAIN CONSTRUCTION IN ILLINOIS".
2. UNDERGROUND UTILITY LOCATIONS HAVE NOT BEEN SHOWN ON THESE PLANS. THE CONTRACTOR SHALL HAVE THE RESPECTIVE UTILITY COMPANIES FIELD LOCATE ALL THEIR FACILITIES PRIOR TO BEGINNING CONSTRUCTION. THE CONTRACTOR SHALL ALSO VERIFY THE DEPTHS OF THE EXISTING UTILITIES IF NECESSARY. ANY RELOCATION OR LOWERING OF UTILITIES SHALL BE COORDINATED BY THE CONTRACTOR.
3. THE CONTRACTOR SHALL BE RESPONSIBLE FOR THE PROTECTION OF ALL UNDERGROUND OR SURFACE UTILITIES, INCLUDING SPRINKLER SYSTEMS, EVEN THOUGH THEY MAY NOT BE SHOWN ON THE PLANS. ANY UTILITY OR SPRINKLER SYSTEM THAT IS DAMAGED DURING CONSTRUCTION SHALL BE REPAIRED OR REPLACED AT THE CONTRACTOR'S EXPENSE TO THE SATISFACTION OF THE ENGINEER.
4. THE CONTRACTOR SHALL NOTIFY THE VILLAGE OF ROBBINS PUBLIC WORKS ADMINISTRATOR (708-254-2715) AT LEAST 48 HOURS IN ADVANCE OF BEGINNING WORK TO OBTAIN VILLAGE UTILITY LOCATIONS AND SHALL COORDINATE ALL CONSTRUCTION OPERATIONS WITH THE ENGINEER.
5. THE CONTRACTOR MAY OBTAIN MUNICIPAL WATER IN BULK, AT NO CHARGE, AS LONG AS THERE IS NOT A "WATERING BAN" IN EFFECT. THE INDISCRIMINATE USE OF FIRE HYDRANTS IS STRICTLY PROHIBITED. WATER FOR CONSTRUCTION SHALL BE METERED OR OTHERWISE ACCOUNTED FOR AND A DAILY LOG MAINTAINED. THE CONTRACTOR SHALL PROVIDE THE WATER TRUCK AND DRIVER REQUIRED TO OBTAIN AND TRANSPORT THIS WATER. THE VILLAGE OF ROBBINS RESERVES THE RIGHT TO RESTRICT OR REFUSE THE USE OF VILLAGE WATER IF DEEMED NECESSARY.
6. IT WILL BE THE CONTRACTOR'S RESPONSIBILITY TO NOTIFY THE ENGINEER, RESIDENTS, AND THE VILLAGE OF ROBBINS WHEN ACCESS TO THEIR DRIVEWAYS WILL BE TEMPORARILY CLOSED DUE TO CURB AND GUTTER AND/OR DRIVEWAY REPLACEMENT. THE CONTRACTOR SHALL DISTRIBUTE NOTICES PROVIDED BY THE ENGINEER TO RESIDENTS. EVERY EFFORT SHALL BE MADE TO ACCOMMODATE ACCESS TO THESE PROPERTIES INCLUDING KNOCKING ON DOORS WHEN DRIVEWAYS ARE ABOUT TO BE CLOSED.
7. ACCESS TO PRIVATE DRIVEWAYS SHALL BE PROVIDED AT ALL TIMES EXCEPT DURING ACTUAL CONSTRUCTION ADJACENT THERE TO. TEMPORARY RAMPS SHALL BE CONSTRUCTED AS NEEDED TO PROVIDE SUCH ACCESS, UTILIZING CRUSHED STONE OR CRUSHED GRAVEL. THIS WORK SHALL BE INCLUDED IN THE PAY ITEM COMBINATION CONCRETE CURB AND GUTTER REMOVAL AND REPLACEMENT.
8. EXISTING PAVEMENT, DRIVEWAY PAVEMENT, CURB AND GUTTER AND SIDEWALK TO REMAIN IN PLACE SHALL BE SAW CUT FULL DEPTH TO PROVIDE A NEAT VERTICAL FACE BETWEEN THE PROPOSED AND EXISTING AND SHALL BE INCLUDED IN THE PRICE OF THE APPROPRIATE REMOVAL PAY ITEM.
9. IN AREAS WHERE THE EXISTING DRIVEWAY, SIDEWALK, OR CURB AND GUTTER IS TO BE REMOVED AND REPLACED, THE REMOVAL AND DISPOSAL OF ANY ADDITIONAL MATERIAL REQUIRED TO ESTABLISH THE PROPOSED DRIVEWAY, SIDEWALK, OR CURB AND GUTTER SUBGRADE ELEVATION SHALL BE INCLUDED IN THE PAY ITEMS, DRIVEWAY PAVEMENT REMOVAL, SIDEWALK REMOVAL OR COMBINATION CURB AND GUTTER REMOVAL.
10. CURB AND GUTTER SHALL BE DEPRESSED AT DRIVEWAYS AND SIDEWALK RAMPS IN ACCORDANCE WITH THE IDOT HIGHWAY STANDARDS. SIDEWALK RAMPS FOR ACCESS FOR THE DISABLED SHALL BE PROVIDED AT THE PROPOSED CROSSWALKS IN ACCORDANCE WITH THE IDOT HIGHWAY STANDARDS OR AS DETERMINED BY THE ENGINEER.
11. THE FINISHED HOT-MIX ASPHALT SURFACE SHALL BE CONSTRUCTED 0.25 INCH ABOVE THE GUTTER FLAG.
12. THE CONTRACTOR SHALL PROVIDE AND INSTALL TWO (2) WEIGHTED SANDBAGS ON EACH TYPE I OR TYPE II BARRICADE USED. ONE (1) WEIGHTED SANDRAG SHALL BE PLACED ACROSS EACH BOTTOM RAIL.
13. PORTLAND CEMENT CONCRETE SIDEWALK SHALL BE THICKENED TO 6-INCHES AT LOCATIONS WHERE THE SIDEWALK CROSSES DRIVEWAYS. TRANSVERSE EXPANSION JOINTS 3/4" SHALL BE PLACED EVERY 50 FEET OR AS DETERMINED BY THE ENGINEER. TRANSVERSE CONTRACTION JOINTS SHALL BE PLACED EVERY 5- FEET. THIS WORK SHALL BE INCLUDED IN THE PAY ITEM PORTLAND CEMENT CONCRETE SIDEWALK 5 INCH.
14. A 1/2-INCH THICK EXPANSION JOINT SHALL BE PROVIDED AT THE JUNCTION OF THE DRIVEWAY APRON AND CURB, AND AT THE JUNCTION OF THE DRIVEWAY APRON AND THE SIDEWALK. THIS WORK WILL BE INCLUDED IN THE COST OF COMBINATION CONCRETE CURB AND GUTTER REMOVAL AND REPLACEMENT OR PORTLAND CEMENT CONCRETE SIDEWALK 5 INCH.
15. DETECTABLE WARNINGS SHALL BE CONSTRUCTED WITH THE INSTALLATION OF A CAST-IN-PLACE 'ARMOR-TILE' 24"x48" NOMINAL PANEL WIDTH AS MANUFACTURED BY 'ENGINEERED PLASTICS, INC.' (800) 682-2525 OF WILLIAMSVILLE, NY OR AN APPROVED EQUAL. THE PANEL SHALL BE A POLYMER COMPOSITE AND COMPLY WITH ADA REQUIREMENTS. THE DOWELS LOCATED ON THE PANEL SHALL PARALLEL THE PAVEMENT CROSS WALK WITH THE CLOSEST EDGE LOCATED AT THE BACK OF CURB. THE PANEL COLOR SHALL BE SELECTED BY THE VILLAGE. INSTALLATION SHALL OCCUR IN ACCORDANCE WITH THE MANUFACTURERS RECOMMENDATIONS.
16. ALL CRACKS AND JOINTS SHALL BE CLEANED PRIOR TO FILLING THEM. THIS WORK SHALL BE INCLUDED IN THE ITEM "MIXTURE FOR CRACKS, JOINTS AND FLANGEWAYS."
17. THE PRIME COAT APPLICATION RATE SHALL BE 0.1 GAL/SY.
18. THE DETAIL FOR COMBINATION CONCRETE CURB AND GUTTER REMOVAL AND REPLACEMENT SHOWN IN THESE DOCUMENTS SHALL BE MODIFIED TO INCLUDE THE FOLLOWING. THE WORK SHALL INCLUDE SAW-CUTTING AND REMOVING THE EXISTING PAVEMENT A MINIMUM OF 6-INCHES MEASURED FROM THE EXISTING EDGE OF PAVEMENT, AND FILLING THE 6" GAP WITH CLASS SI CONCRETE TO AN ELEVATION 2-1/4" BELOW THE PROPOSED CURB AND GUTTER FLAG. IF THE CONCRETE IS POURED HIGHER THAN 2-1/4" FROM THE GUTTER FLAG FOR STREETS TO BE RESURFACED, THE CONTRACTOR WILL BE REQUIRED TO GRIND ADDITIONAL CONCRETE TO THE REQUIRED 2-1/4" DEPTH. THE AREA BEHIND THE PROPOSED CURB AND GUTTER SHALL BE RESTORED WITH NATIVE SOD IN ACCORDANCE WITH ARTICLE 1081.03 RATHER THAN SALT TOLERANT SOD.
19. CONCRETE DRIVEWAY PAVEMENT SHALL NOT BE REMOVED FOR CURB AND GUTTER FORMING PURPOSES UNLESS DIRECTED BY THE ENGINEER. ANY DAMAGE TO CONCRETE DRIVEWAYS SHALL BE REPAIRED AT THE CONTRACTOR'S EXPENSE.
20. ALL CONSTRUCTION PERSONNEL WILL BE REQUIRED TO WEAR A FLUORESCENT VEST PER ARTICLE 701.12 AND 701.13 OF THE STANDARD SPECIFICATIONS AT ALL TIMES WHILE ON THE CONSTRUCTION SITE. COMPLIANCE WITH THIS REQUIREMENT SHALL BE INCLUDED IN THE CONTRACT.
21. BEFORE BEGINNING ANY WORK, THE CONTRACTOR SHALL RETAIN AND RECORD FOR FUTURE REFERENCE, ALL EXISTING PAVEMENT MARKING LINES (AND RAISED REFLECTIVE MARKINGS) IN ORDER THAT THESE LOCATIONS CAN BE REESTABLISHED FOR STRIPING. EXACT LOCATIONS OF ALL PAVEMENT MARKINGS SHALL BE AS DIRECTED BY THE ENGINEER.
22. THE CONTRACTOR SHALL PROTECT AND CAREFULLY PRESERVE ALL SECTION OR SUBSECTION MONUMENTS OR PROPERTY OR REFERENCE MARKS UNTIL THE OWNERS, HIS AGENT OR AN AUTHORIZED SURVEYOR HAS WITNESSED OR OTHERWISE REFERENCED THEIR LOCATIONS.
23. AGGREGATE WEDGE SHOULDER, TYPE B SHALL MEET THE REQUIREMENTS OF ARTICLE 1004.4 OF THE STANDARD SPECIFICATIONS. RECLAIMED ASPHALT PAVEMENT (RAP) SHALL NOT BE ALLOWED AS AN ACCEPTABLE MATERIAL FOR AGGREGATE WEDGE SHOULDER, TYPE B.
24. CONNECTION OF PROPOSED STORM SEWER INTO EXISTING STORM SEWER OR EXISTING STORM SEWER STRUCTURES SHALL BE INCLUDED IN THE COST OF STORM SEWERS.
25. THE CONTRACTOR SHALL REPLACE ALL STREET SIGNS AND MAIL BOXES REMOVED DURING CONSTRUCTION AS NEAR AS POSSIBLE TO THEIR ORIGINAL LOCATION OR AS DETERMINED BY THE ENGINEER. THIS WORK SHALL BE INCLUDED IN THE CONTRACT.
26. BEFORE STARTING ANY EXCAVATION, THE CONTRACTOR SHALL CALL "JULIE" AT 800-892-0123 FOR FIELD LOCATIONS OF BURIED ELECTRIC, TELEPHONE AND GAS FACILITIES. (48 HOURS NOTIFICATION IS REQUIRED)
27. MATERIALS RESULTING FROM THE REMOVAL OF PAVEMENT, DRIVEWAYS, CURB AND GUTTER, HOT-MIX ASPHALT SURFACES, ETC. SHALL BE REMOVED AT THE END OF EACH DAY TO AN APPROVED SITE. IN THE JUDGEMENT OF THE ENGINEER, SHOULD IT BE NECESSARY TO REMOVE SUCH MATERIALS, THE ENGINEER WILL HAVE THE MATERIAL REMOVED BY THE LOCAL AGENCY. THE COST OF THIS WORK SHALL BE CALCULATED IN ACCORDANCE WITH SECTION 109.04 AND SHALL BE DEDUCTED FROM THE FINAL PAYMENT.
28. THE CONTRACTOR SHALL LIMIT THE WORK TO ONE SIDE OF THE STREET UNLESS AS DIRECTED BY THE ENGINEER.
29. THE LOCATIONS OF THE CLASS D PATCHES SHALL BE DETERMINED BY THE ENGINEER IN THE FIELD.
30. THE DAY'S PAVING OPERATION SHALL RESULT IN A SINGLE TRANSVERSE JOINT. ANY COLD LONGITUDINAL JOINTS WILL NOT BE ACCEPTED. PROVIDING A SINGLE TRANSVERSE JOINT SHALL BE ACCOMPLISHED BY PAVING ONE LANE OF SUFFICIENT LENGTH THAT WILL ALLOW FOR THE PAVING OF THE ADJACENT LANE IN THE SAME DAY.
31. ANY ANTI-STRIPPING ADDITIVE REQUIRED SHALL BE INCLUDED IN THE COST OF THE SURFACE COURSE.
32. THE CONTRACTOR SHALL NOTIFY IDOT BUREAU OF MATERIALS (PHONE 847-705-4337) AT LEAST 24 HOURS PRIOR TO THE PLACEMENT OF HOT-MIX ASPHALT OR PORTLAND CEMENT CONCRETE.
33. NEW OR REPLACEMENT CLOSED LIDS SHALL BE STAMPED TO INDICATE THE STRUCTURE TYPE. STORM LIDS SHALL BE STAMPED WITH "STORM", SANITARY LIDS SHALL BE STAMPED WITH "SANITARY" AND WATER VALVE VAULT LIDS SHALL BE STAMPED WITH "WATER". STAMPING SHALL BE INCLUDED IN THE COST OF THE NEW LID. ALL NEW TYPE 1 OPEN LIDS SHALL BE BICYCLE SAFE.
34. FOR STEEL BARS CERTIFICATION, PLEASE CONTACT IDOT BUREAU OF MATERIALS AT (847) 705-4337.

I:\CRYSTAL LAKE\ROBBINS\100493\CLARRELEVOCORP\CADD-SURVEY\DRAWINGS\DWGS\100493-GENNOTES.DWG GenNot  
 Plotted: 2/16/2012 3:15 PM By: J66KAR  
 Copyright © 2012, By: Baxter & Woodman, Inc.  
 State of Illinois - Professional Designer Firm  
 License No. 184-08-121 Expires 4/30/14



DESIGNED - REV	REVISED -
DRAWN - UKS	REVISED -
CHECKED - JDH	REVISED -
DATE - 04-20-12	REVISED -

**STATE OF ILLINOIS  
DEPARTMENT OF TRANSPORTATION**

### GENERAL NOTES

SCALE: PROJECT NO: 100493 STA. TO STA.

FAU RTE.	SECTION	COUNTY	TOTAL SHEETS	SHEET NO.
1596	10-00026-00-RS	COOK	21	3
CONTRACT NO.: 63692				
FED. ROAD DIST. NO. 1		ILLINOIS		

### SUMMARY OF QUANTITIES

CODE NO.	ITEM	UNIT	CONSTRUCTION TYPE CODE	
			DOCS	TOTAL QUANTITY
20200100	EARTH EXCAVATION	CU YD		229
20800150	TRENCH BACKFILL	CU YD		321
28000250	TEMPORARY EROSION CONTROL SEEDING	FOUND		12
28000305	TEMPORARY DITCH CHECKS	FOOT		20
28000500	INLET AND PIPE PROTECTION	EACH		10
28000510	INLET FILTERS	EACH		11
35101600	AGGREGATE BASE COURSE, TYPE B 4"	SQ YD		178
40600200	BITUMINOUS MATERIALS (PRIME COAT)	TON		4.5
40600300	AGGREGATE (PRIME COAT)	TON		24
40600400	MIXTURE FOR CRACKS, JOINTS, AND FLANGWAYS	TON		2
40600827	POLYMERIZED LEVELING BINDER (MACHINE METHOD), R-4.75, N50	TON		463
40600895	CONSTRUCTING TEST STRIP	EACH		2
40600982	HOT-MIX ASPHALT SURFACE REMOVAL - BUTT JOINT	SQ YD		137
40603080	HOT-MIX ASPHALT BINDER COURSE, R-15.0, N50	TON		132
40603335	HOT-MIX ASPHALT SURFACE COURSE, MX "D", N50	TON		998
40603340	HOT-MIX ASPHALT SURFACE COURSE, MX "D", N70	TON		19
42001900	PROTECTIVE COAT	SQ YD		242
42400200	PORTLAND CEMENT CONCRETE SIDEWALK 6 INCH	SQ FT		1291
42400800	DETECTABLE WARNINGS	SQ FT		100
44000157	HOT-MIX ASPHALT SURFACE REMOVAL, 2"	SQ YD		10994
44000200	DRIVEWAY PAVEMENT REMOVAL	SQ YD		140
44000600	SIDEWALK REMOVAL	SQ FT		1291
44003100	MEDIAN REMOVAL	SQ FT		708
44201737	CLASS D PATCHES, TYPE I, 8 INCH	SQ YD		50
44201741	CLASS D PATCHES, TYPE II, 8 INCH	SQ YD		60
44201745	CLASS C PATCHES, TYPE II, 6 INCH	SQ YD		200
44201747	CLASS D PATCHES, TYPE IV, 8 INCH	SQ YD		1861
48" C2100	AGGREGATE WEDGE SHOULDER, TYPE B	TON		15
550A2320	STORM SEWERS, RUBBER GASKET, CLASS A, TYPE 1 1/2"	FOOT		319
550A2330	STORM SEWERS, RUBBER GASKET, CLASS A, TYPE 1 1/8"	FOOT		355
550A2340	STORM SEWERS, RUBBER GASKET, CLASS A, TYPE 1 1/8"	FOOT		55
55100500	STORM SEWER REMOVAL 12"	FOOT		20
60206905	CATCH BASINS, TYPE C, TYPE 1 FRAME, OPEN LID	EACH		5
60218400	MANHOLES, TYPE A, 4'-DIAMETER, TYPE 1 FRAME, CLOSED LID	EACH		3
60237470	INLETS, TYPE A, TYPE 24 FRAME AND GRATE	EACH		1
60260100	INLETS TO BE ADJUSTED	EACH		1
60406100	FRAMES AND LIDS, TYPE 1, CLOSED LID	EACH		5
60500060	REMOVING INLETS	EACH		1
90618320	CONCRETE MEDIAN SURFACE, 6 INCH	SQ FT		308
67100100	MOBILIZATION	L SUM		1
# 70102620	TRAFFIC CONTROL AND PROTECTION, STANDARD 701501	L SUM		1
# 70102635	TRAFFIC CONTROL AND PROTECTION, STANDARD 701701	L SUM		1
# 70102640	TRAFFIC CONTROL AND PROTECTION, STANDARD 701801	L SUM		1
70300100	SHORT TERM PAVEMENT MARKING	FOOT		858
70300210	TEMPORARY PAVEMENT MARKING LETTERS AND SYMBOLS	SQ FT		182
70300220	TEMPORARY PAVEMENT MARKING - LINE 4"	FOOT		3195
70300240	TEMPORARY PAVEMENT MARKING - LINE 6"	FOOT		1214
70300260	TEMPORARY PAVEMENT MARKING - LINE 12"	FOOT		120
70300280	TEMPORARY PAVEMENT MARKING - LINE 24"	FOOT		206
70301000	WORK ZONE PAVEMENT MARKING REMOVAL	SQ FT		143
* 78000100	THERMOPLASTIC PAVEMENT MARKING - LETTERS AND SYMBOLS	SQ FT		182
* 78000200	THERMOPLASTIC PAVEMENT MARKING - LINE 4"	FOOT		3195
* 78000400	THERMOPLASTIC PAVEMENT MARKING - LINE 6"	FOOT		1214
* 78000600	THERMOPLASTIC PAVEMENT MARKING - LINE 12"	FOOT		120
* 78000800	THERMOPLASTIC PAVEMENT MARKING - LINE 24"	FOOT		206
* 88600600	DETECTOR LOOP REPLACEMENT	FOOT		1013
# X2020110	GRADING AND SHAPING SHOULDERS	UNIT		18
# X5028050	SANITARY MANHOLES TO BE ADJUSTED	EACH		5
# X9030310	FRAMES AND LIDS TO BE ADJUSTED (SPECIAL)	EACH		5
# XX067278	PARKWAY RESTORATION	SQ YD		561
# Z0004510	HOT-MIX ASPHALT DRIVEWAY PAVEMENT, 3"	SQ YD		233
# Z0004562	COMBINATION CONCRETE CURB AND GUTTER REMOVAL AND REPLACEMENT	FOOT		282
# Z0009850	TEMPORARY INFORMATION SIGNING	SQ FT		104

# INDICATES ITEM COVERED BY SPECIAL PROVISION  
 \* INDICATES SPECIALTY ITEM

ALPHABETICALLY SORTED BY QUANTITY - SEE DRAWING FOR NOTES AND SPECIFICATIONS  
 PROJECT: I-55/2012, N.38, P. 5531AR  
 DATE: 04/20/12, BY: B. B. B. B. B.  
 State of Illinois Professional Design Firm  
 License No. 04-001021 - Expires 4-30-15



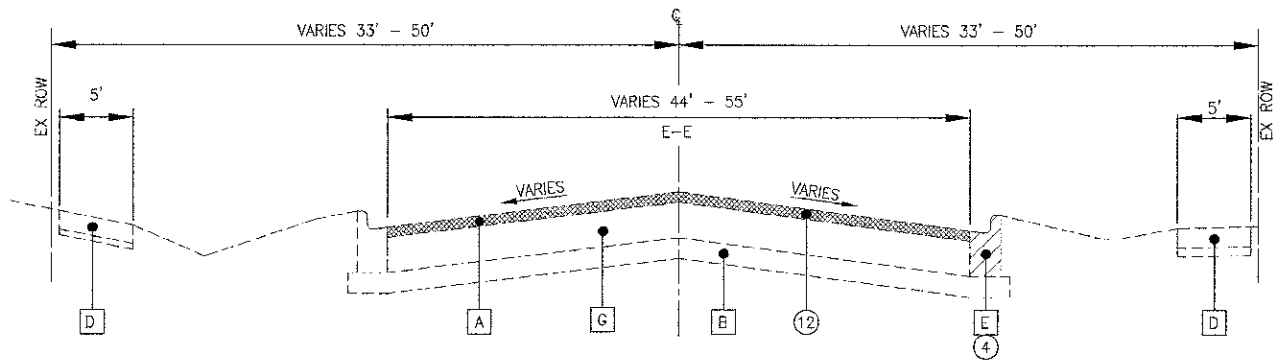
DESIGNED - REW	REVISED -
DRAWN - UKP	REVISED -
CHECKED - LDH	REVISED -
DATE - 04-20-12	REVISED -

**STATE OF ILLINOIS  
DEPARTMENT OF TRANSPORTATION**

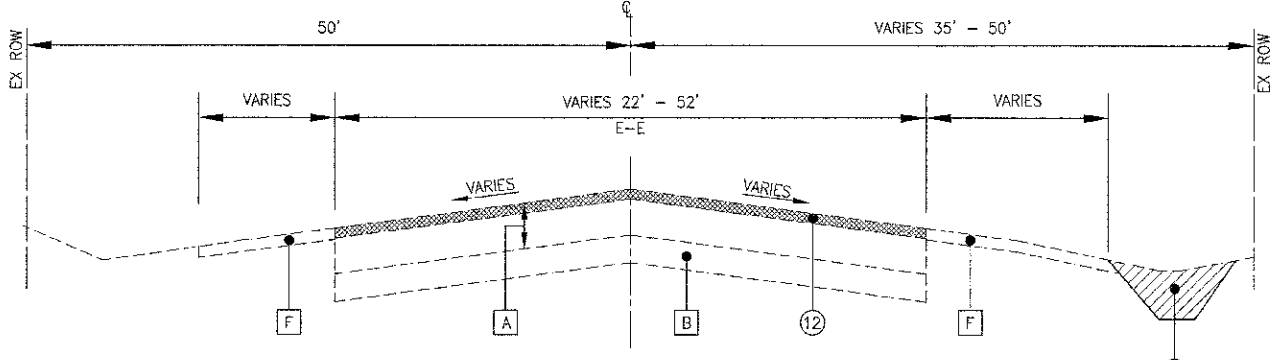
**SUMMARY OF QUANTITIES**

SCALE: PROJECT NO. 106493 STA. 88+00 TO STA. 95+00

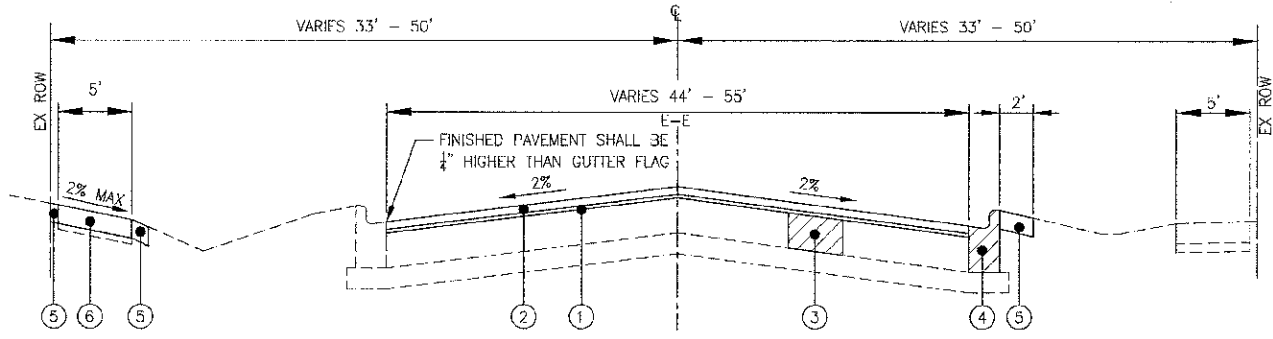
F.A.U. RTE.	SECTION	COUNTY	TOTAL SHEETS	SHEET NO.
1596	10-00026-00-RS	COOK	21	4
FED. ROAD DIST. NO. 1 ILLINOIS			CONTRACT NO.: 63692	



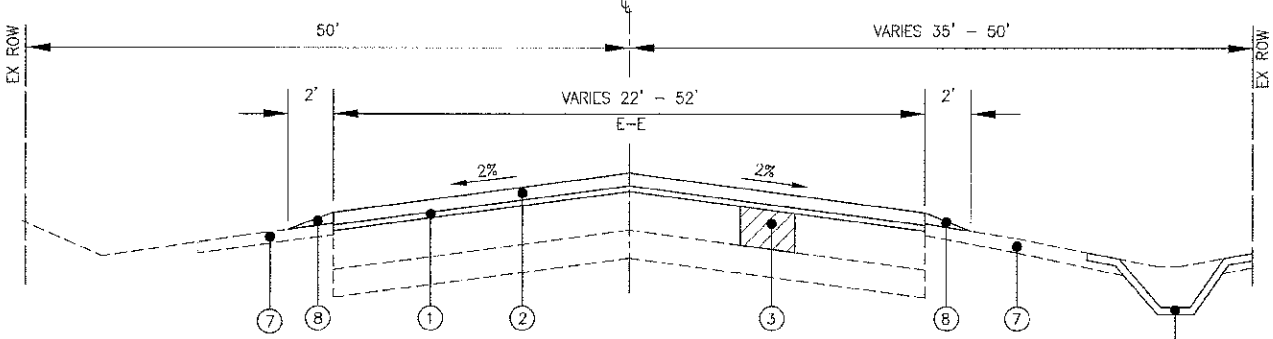
**EXISTING TYPICAL SECTION**  
**CLAIRE BOULEVARD**  
**STA 80+38 TO STA 87+45**



**EXISTING TYPICAL SECTION**  
**CLAIRE BOULEVARD**  
**STA 87+45 TO STA 92+50**



**PROPOSED TYPICAL SECTION**  
**CLAIRE BOULEVARD**  
**STA 80+38 TO STA 87+45**



**PROPOSED TYPICAL SECTION**  
**CLAIRE BOULEVARD**  
**STA 87+45 TO STA 92+50**

**LEGEND**

- |   |   |
|---|---|
| <p><b>EXISTING</b></p> <ul style="list-style-type: none"> <li>A EXISTING HOT-MIX ASPHALT SURFACE</li> <li>B EXISTING AGGREGATE BASE</li> <li>C RESERVED</li> <li>D EXISTING SIDEWALK</li> <li>E EXISTING COMBINATION CONCRETE CURB AND GUTTER</li> <li>F EXISTING AGGREGATE SHOULDER</li> <li>G EXISTING PCC BASE COURSE</li> </ul> | <p><b>PROPOSED</b></p> <ul style="list-style-type: none"> <li>1 POLYMERIZED LEVELING BINDER (MACHINE METHOD), IL-4.75, N50 - 3/4"</li> <li>2 HOT-MIX ASPHALT SURFACE COURSE, MIX "D", N50 - 1 1/2"</li> <li>3 CLASS D PATCHES - 8" (AS DETERMINED BY THE ENGINEER)</li> <li>4 COMBINATION CONCRETE CURB AND GUTTER REMOVAL AND REPLACEMENT (AS DETERMINED BY THE ENGINEER)</li> <li>5 PARKWAY RESTORATION</li> <li>6 SIDEWALK REMOVAL<br/>PCC SIDEWALK, 5-INCH (SPECIAL)<br/>(AS DETERMINED BY THE ENGINEER)</li> <li>7 GRADING AND SHAPING SHOULDERS (AS DETERMINED BY THE ENGINEER)</li> <li>8 AGGREGATE WEDGE SHOULDER, TYPE B</li> <li>9 FARTH EXCAVATION</li> <li>10 HOT-MIX ASPHALT SURFACE COURSE, MIX "D", N70 - 1 1/2"</li> <li>11 HOT-MIX ASPHALT BINDER COURSE, IL-19 MM, N50 - 2 1/4"</li> <li>12 HOT-MIX ASPHALT SURFACE REMOVAL - 2"</li> </ul> |
|---|---|

**HOT-MIX ASPHALT MIXTURE REQUIREMENTS**

NOTE: THE CONTRACTOR SHALL MILL BEFORE PATCHING

ITEM	AIR VOIDS @ Ndes
<b>RESURFACING</b>	
HOT-MIX ASPHALT SURFACE COURSE, MIX "D", N50 (IL 9.5mm), 1 1/2"	4% @ 50 Gyr.
HOT-MIX ASPHALT SURFACE COURSE, MIX "D", N70 (IL 9.5mm), 1 1/2"	4% @ 50 Gyr.
POLYMERIZED LEVELING BINDER (MACHINE METHOD), IL-4.75, N50, 3/4"	3.5% @ 50 Gyr.
<b>SHOULDERS</b>	
HOT-MIX ASPHALT SURFACE COURSE, MIX "D", N50 (IL 9.5mm), 1 1/2"	4% @ 50 Gyr.
HOT-MIX ASPHALT BINDER COURSE, IL-19.0, N50, 2 1/4"	4% @ 50 Gyr.
<b>DRIVEWAYS</b>	
HOT-MIX ASPHALT SURFACE COURSE, MIX "D", N50 (IL 9.5mm), 3" (2 Lifts)	4% @ 50 Gyr.
<b>PATCHING</b>	
CLASS D PATCHES (HMA BINDER IL-19 mm), 8" (3 Lifts)	4% @ 70 Gyr.

THE UNIT WEIGHT USED TO CALCULATE ALL HMA SURFACE MIXTURE QUANTITIES IS 112 LBS/SQ YD/IN.

THE "AC TYPE" FOR POLYMERIZED HMA MIXES SHALL BE "SBS/SBR PG 76-22" AND FOR NON-POLYMERIZED HMA THE "AC TYPE" SHALL BE "PG 64-22" UNLESS MODIFIED BY THE DISTRICT ONE SPECIAL PROVISIONS.

FOR "PERCENT OF RAP" SEE SPECIAL PROVISIONS.

I:\CRYSTAL\_LAND\_PROJECTS\190-09-01-CLAREB-DEVELOPMENT-SURVEY\JOB-FILES\DWG\110493-TYP-SEC-TP-1  
 Plot Date: 7/20/12 3:05 PM By: 516/ker  
 Copyright © 2012, by Baxter & Woodman, Inc.  
 State of Illinois - Professional Design Firm  
 License No. 03-0012 - Expire 12-31-15



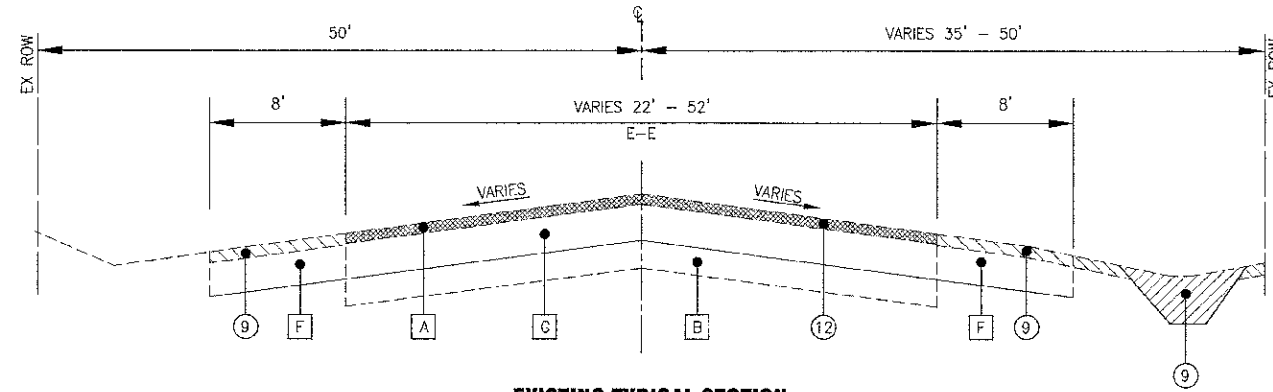
DESIGNED - REW	REVISED -
DRAWN - UKB	REVISED -
CHECKED - LDH	REVISED -
DATE - 04-20-12	REVISED -

**STATE OF ILLINOIS**  
**DEPARTMENT OF TRANSPORTATION**

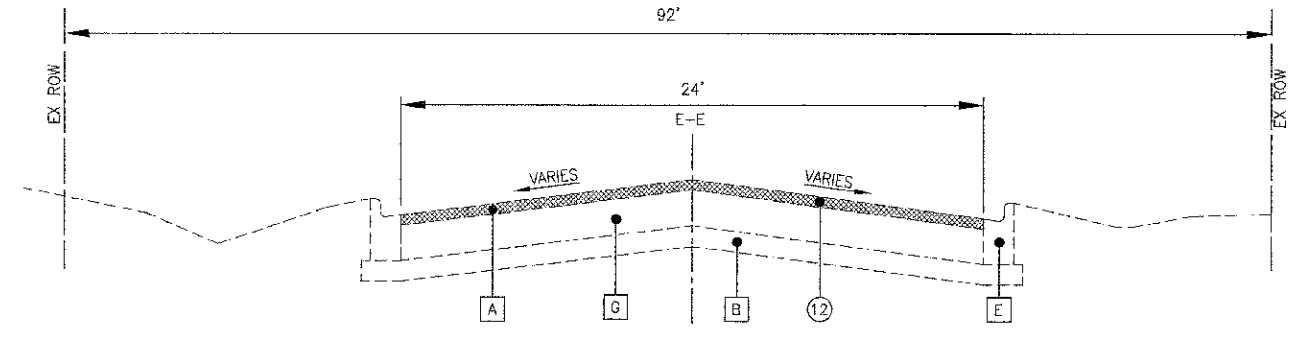
**TYPICAL SECTIONS**  
**CLAIRE BOULEVARD**

SCALE: PROJECT NO: 100493 STA. TO STA.

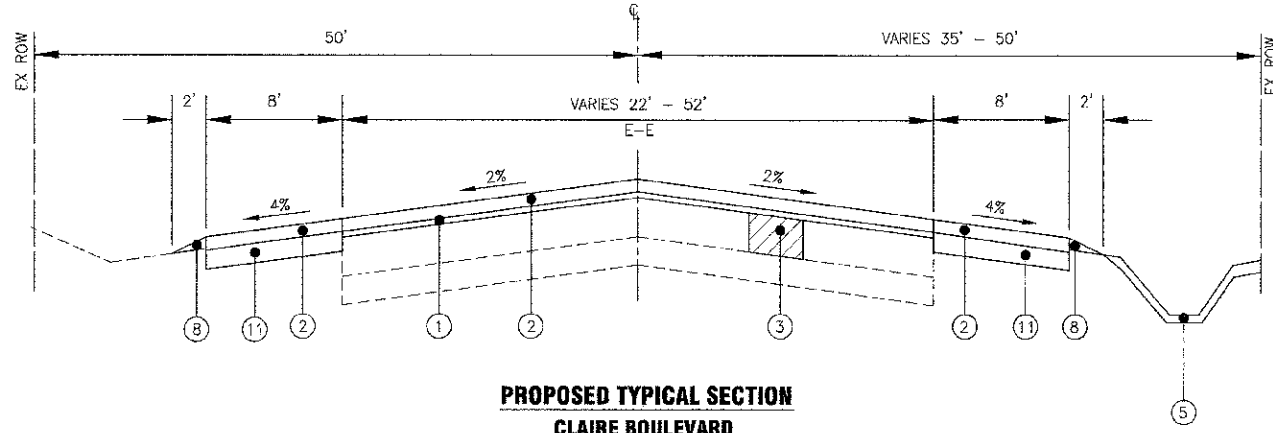
F.A.U. No. 1596	SECTION 1C-00C26-00-RS	COUNTY COOK	TOTAL SHEETS 21	SHEET NO. 5
FED. ROAD DIST. NO. 1 ILLINOIS			CONTRACT NO.: 63692	



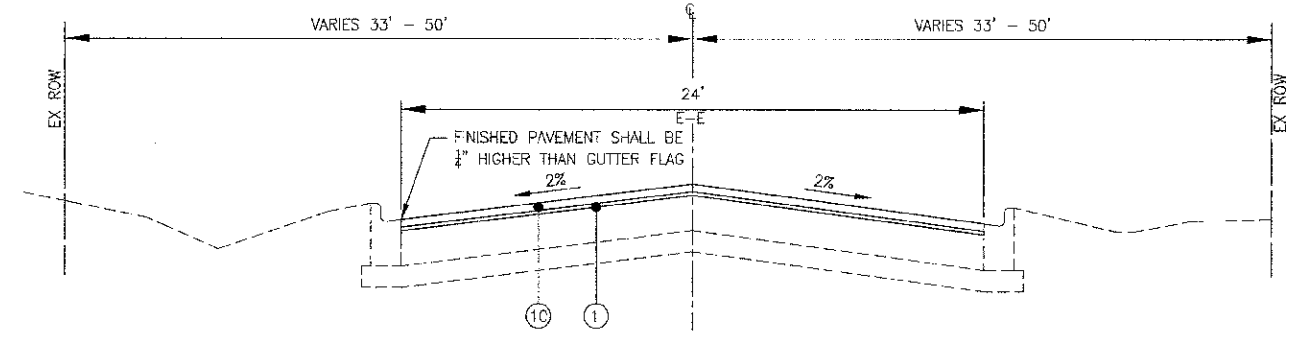
**EXISTING TYPICAL SECTION  
CLAIRE BOULEVARD  
STA 92+50 TO STA 100+75**



**EXISTING TYPICAL SECTION  
NORTH FRANCISCO AVENUE**



**PROPOSED TYPICAL SECTION  
CLAIRE BOULEVARD  
STA 92+50 TO STA 100+75**



**PROPOSED TYPICAL SECTION  
NORTH FRANCISCO AVENUE**

**LEGEND**

- | EXISTING  | PROPOSED   |
|---|--|
| A EXISTING HOT-MIX ASPHALT SURFACE              | 1 POLYMERIZED LEVELING BINDER (MACHINE METHOD), IL-4.75, N50 - 3"                              |
| B EXISTING AGGREGATE BASE                       | 2 HOT-MIX ASPHALT SURFACE COURSE, MIX "D", N50 - 1 1/2"  |
| C RESERVED                                      | 3 CLASS D PATCHES - 8" (AS DETERMINED BY THE ENGINEER)   |
| D EXISTING SIDEWALK                             | 4 COMBINATION CONCRETE CURB AND GUTTER REMOVAL AND REPLACEMENT (AS DETERMINED BY THE ENGINEER) |
| E EXISTING COMBINATION CONCRETE CURB AND GUTTER | 5 PARKWAY RESTORATION  |
| F EXISTING AGGREGATE SHOULDER                   | 6 SIDEWALK REMOVAL<br>PCC SIDEWALK, 5-INCH (SPECIAL)<br>(AS DETERMINED BY THE ENGINEER)        |
| G EXISTING PCC BASE COURSE                      | 7 GRADING AND SHAPING SHOULDERS (AS DETERMINED BY THE ENGINEER)                                |
|   | 8 AGGREGATE WEDGE SHOULDER, TYPE B   |
|   | 9 EARTH EXCAVATION   |
|   | 10 HOT-MIX ASPHALT SURFACE COURSE, MIX "D", N70 - 1 1/2"                                       |
|   | 11 HOT-MIX ASPHALT BINDER COURSE, IL-19 MM, N50 - 2 1/2"                                       |
|   | 12 HOT-MIX ASPHALT SURFACE REMOVAL - 2"  |

**EXISTING PAVEMENT DATA**

CORE NUMBER	HMA THICKNESS	PCC BASE THICKNESS
29	3.75	7.25
30	2.5	8
32	4	8
33	3.25	7.5

C:\WORK\146\146.DWG - CLAIR.BOULEVA.DWG - STA 92+50 TO STA 100+75 - TYP. DWG - TYP. 2  
 Date: 5/1/2012 3:28 PM By: BAXTER  
 Copyright © 2012 By: Baxter & Woodman, Inc.  
 State of Illinois - Professional Design Firm  
 License No. - 134-001221 - Expires 4-30-15



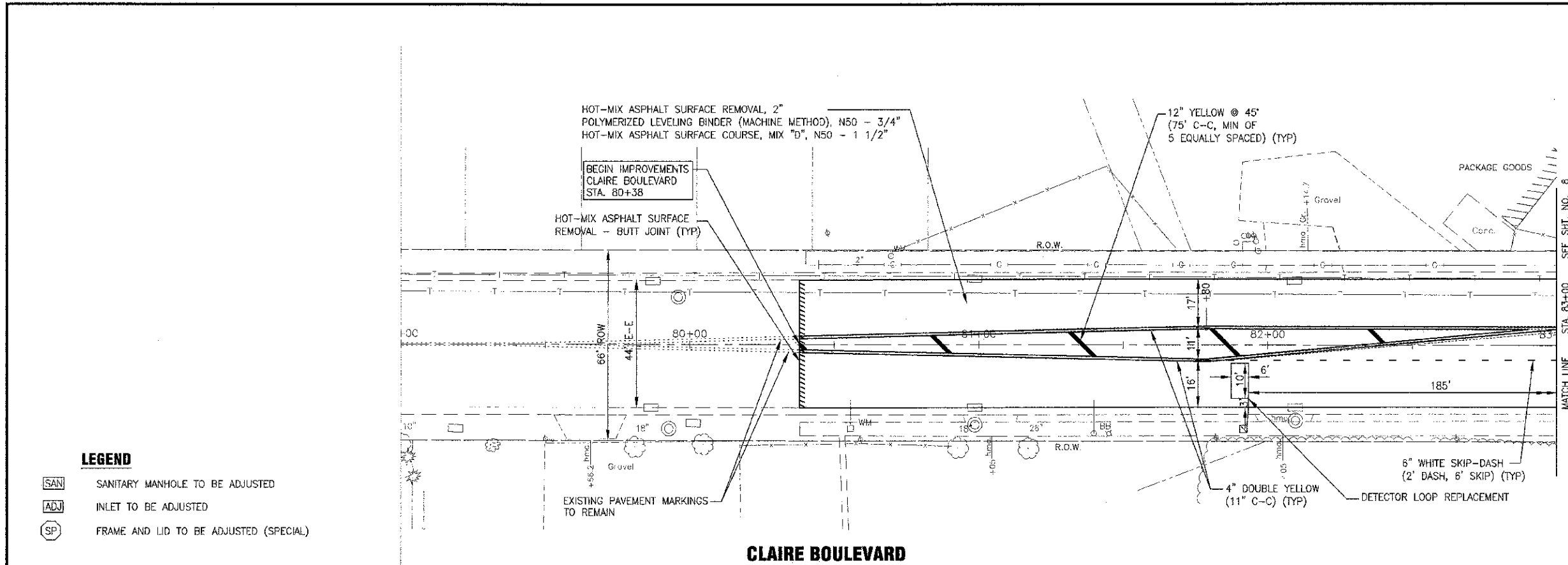
DESIGNED - REW	REVISED -
DRAWN - UKE	REVISED -
CHECKED - LDH	REVISED -
DATE - 04-20-12	REVISED -

**STATE OF ILLINOIS  
DEPARTMENT OF TRANSPORTATION**

**TYPICAL SECTIONS  
CLAIRE BOULEVARD**

SCALE: PROJECT NO: 100493 STA. TO STA.

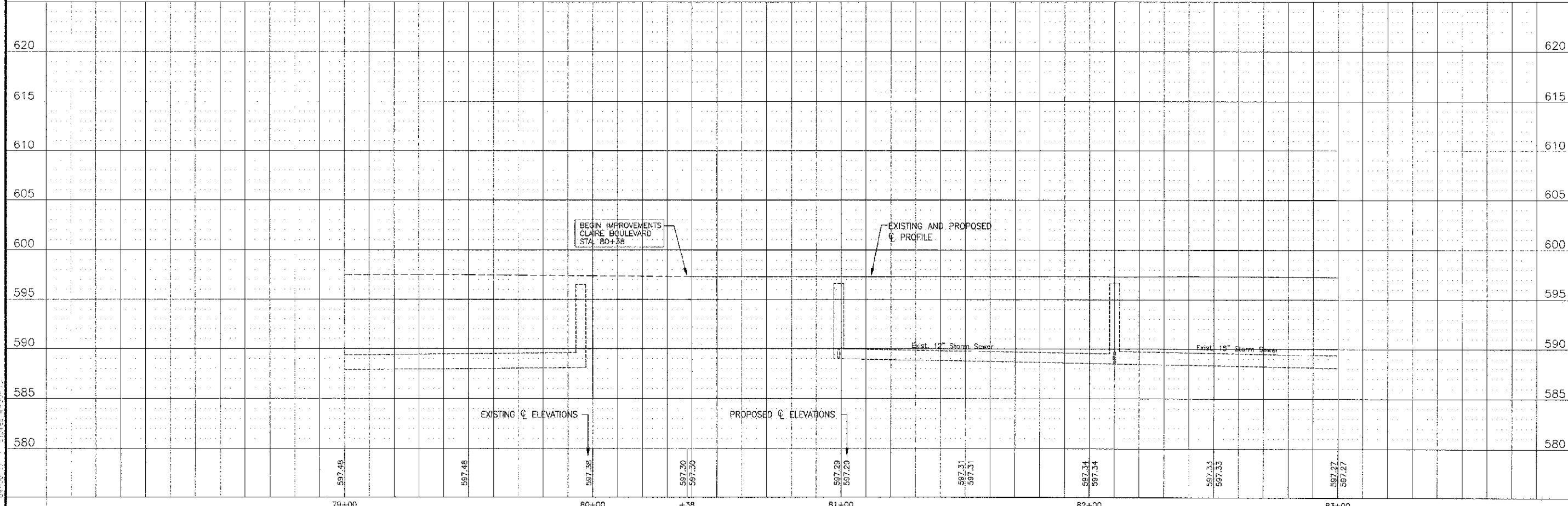
F.A.U. RITE	SECTION	COUNTY	TOTAL SHEETS	SHEET NO.
1596	10-00026-00-RS	COOK	21	6
CONTRACT NO.: 63692				
FED. ROAD DIST. NO. 1 ILLINOIS				



**LEGEND**

- SAN SANITARY MANHOLE TO BE ADJUSTED
- ADJ INLET TO BE ADJUSTED
- SP FRAME AND LID TO BE ADJUSTED (SPECIAL)

**CLAIRE BOULEVARD**



C:\DRYDIAL\PROJECTS\100493-CLAIRES-BOULEVARD-SUPPLEMENTAL-DRAWINGS\100493-PLAN\DWG 07  
 Date: 07/20/12 3:38 PM By: 59049  
 07/20/12 3:38 PM By: 59049  
 State of Illinois - Professional Design Firm  
 License No. 04-0012



DESIGNED - REW	REVISED -
DRAWN - LKB	REVISED -
CHECKED - LDH	REVISED -
DATE - 04-20-12	REVISED -

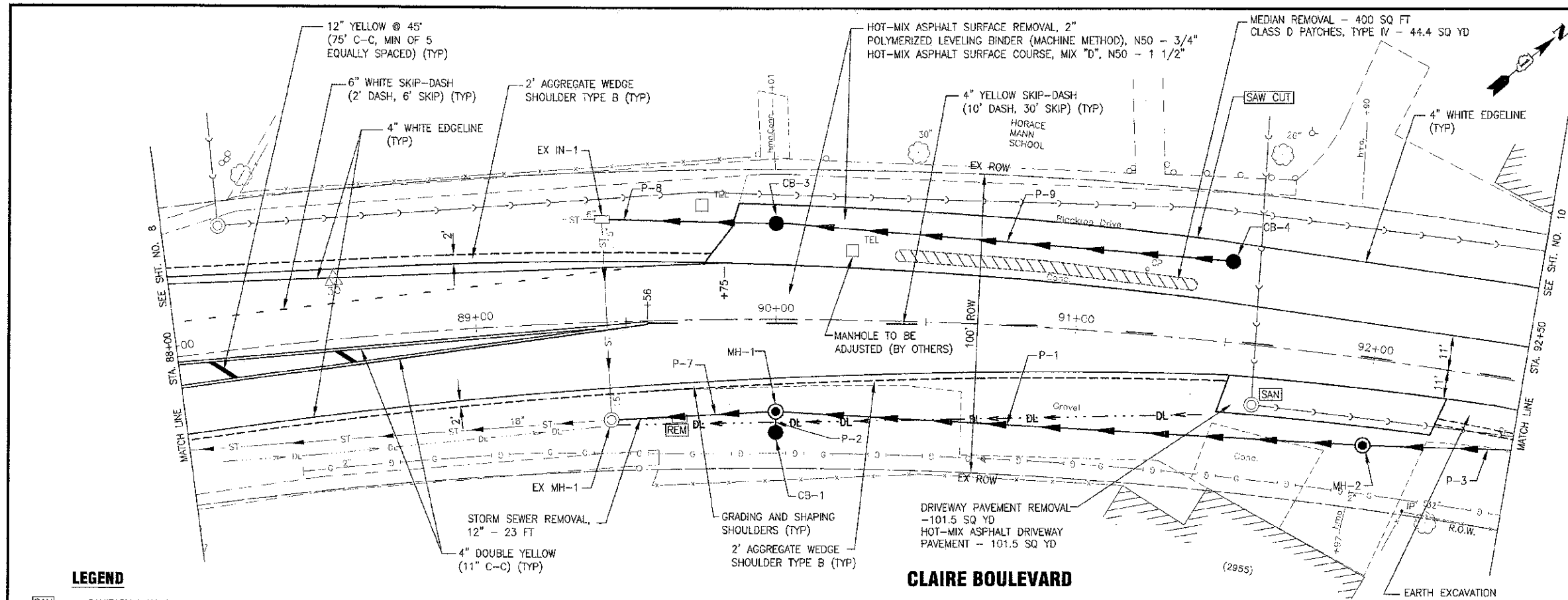
STATE OF ILLINOIS  
DEPARTMENT OF TRANSPORTATION

**PLAN AND PROFILE**  
**CLAIRE BOULEVARD**  
SCALE: HORIZ. 1"=20' / VERT. 1"=5'  
PROJECT NO: 100493 | STA. 79+00 TO STA. 83+00

SECTION	COUNTY	TOTAL SHEETS	SHEET NO.
10-30026-00-R5	COOK	21	7
CONTRACT NO.: 63692		FED. ROAD DIST. NO. 1   ILLINOIS	







**LEGEND**

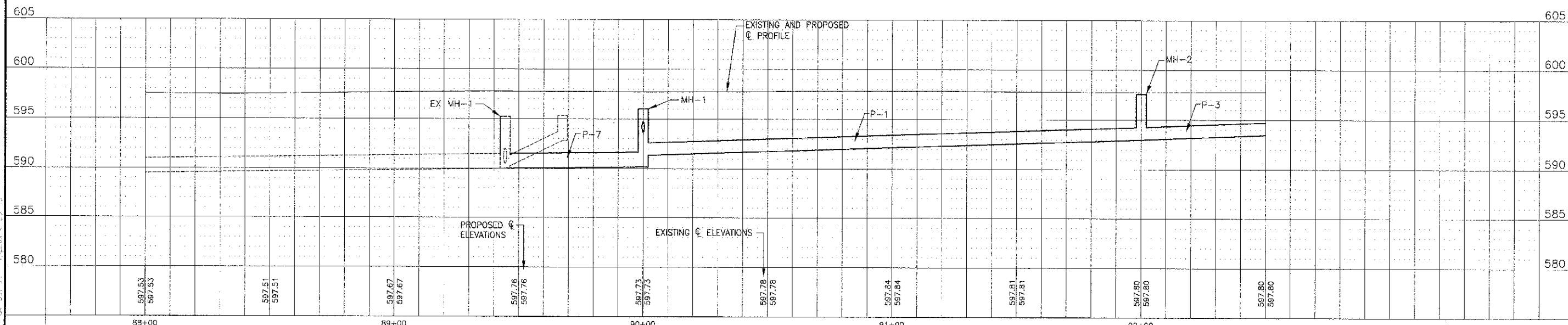
- SAN SANITARY MANHOLE TO BE ADJUSTED
- ADJ INLET TO BE ADJUSTED
- SP FRAME AND LID TO BE ADJUSTED (SPECIAL)

**STORM STRUCTURES**

- EX MH-1  
STA 89+45, 33' RT  
INV 590.02 NE (PROPOSED)
- EX IN-1  
STA 8+45, 34' LT  
INV 592.85 NE (PROPOSED)
- ST MH-1  
STA 90+00, 31' RT  
MANHOLE, TY A, TY 1 FR, CL 4' DIA  
RIM = 596.00  
INV 590.16 SW 18"  
INV 591.34 NE 15"  
INV 593.68 SE 12"
- ST MH-2  
STA 92+00, 29' RT  
MANHOLE, TY A, TY 1 FR, CL 4' DIA  
RIM = 597.60  
INV 593.00 SW & NE 15"
- CB-1  
STA 90+00, 38' RT  
CATCH BASIN, TY C, TY 1 FR, OL  
RIM = 596.00  
INV 593.75 NW 12"
- CB-3  
STA 90+00, 32' LT  
CATCH BASIN, TY C, TY 1 FR, OL  
RIM = 598.19  
INV 594.11 SW & NE 12"
- CB-4  
STA 91+50, 27' LT  
CATCH BASIN, TY C, TY 1 FR, OL  
RIM = 598.11  
INV 595.61 SW 12"

**STORM SEWER PIPES**

- P-1  
200 LF OF 15" STRG, TY 1 @ 1.33%  
TBF = 145.6 CY
- P-2  
7 LF OF 12" STRG, TY 1 @ 1.00%  
TBF = 1.1 CY
- P-3  
65 LF OF 15" STRG, TY 1 @ 0.97%  
TBF = 24.4 CY
- P-7  
55 LF OF 18" STRG, TY 1 @ 0.25%  
TBF = 45.6 CY
- P-8  
55 LF OF 12" STRG, TY 1 @ 2.29%  
TBF = 18.8 CY
- P-9  
150 LF OF 12" STRG, TY 1 @ 1.00%  
TBF = 38.6 CY



DESIGNED - REW	REVISED -
DRAWN - LUKE	REVISED -
CHECKED - LDH	REVISED -
DATE - 04-20-12	REVISED -

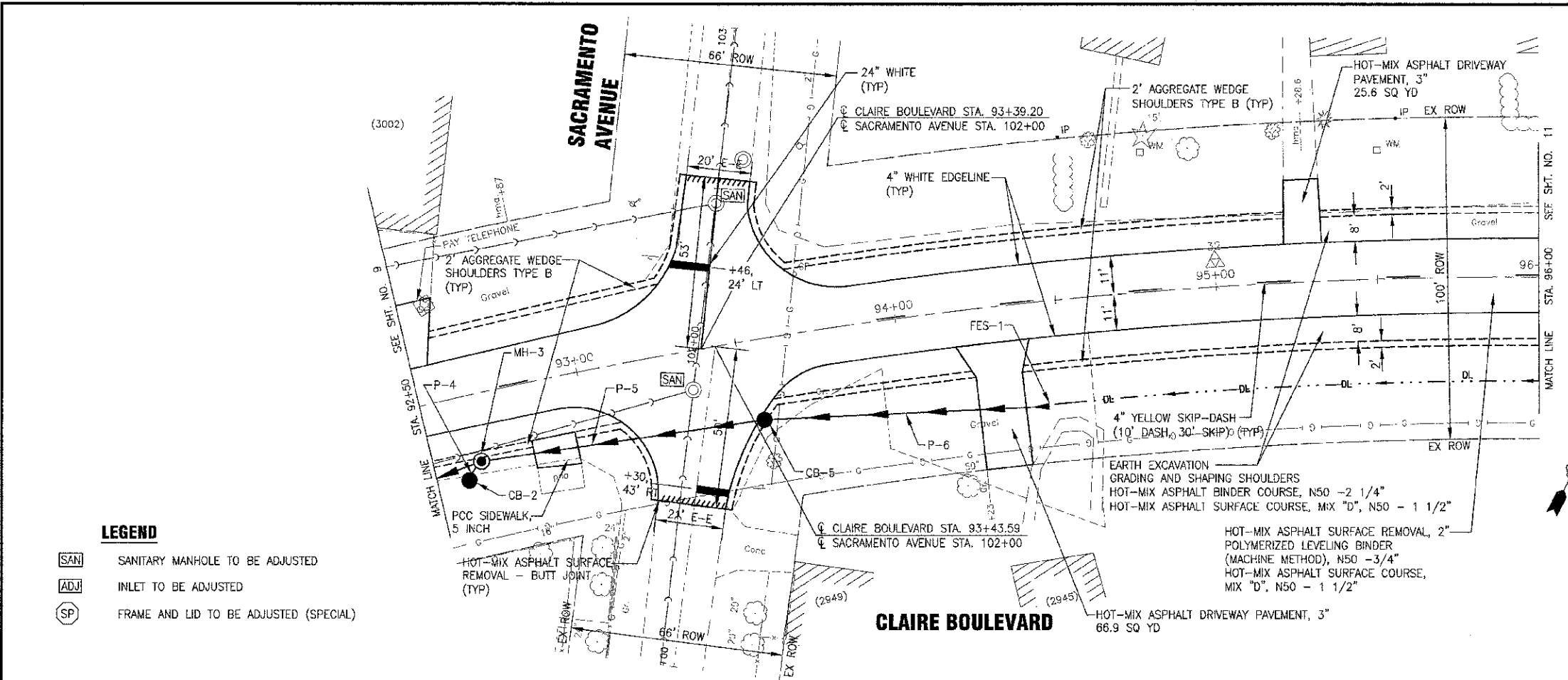
STATE OF ILLINOIS  
DEPARTMENT OF TRANSPORTATION

**PLAN AND PROFILE  
CLAIRE BOULEVARD**

F.A.U. RITE 1:500	SECTION 10-C0026-00-RS	COUNTY COOK	TOTAL SHEETS 2	SHEET NO. 9
CONTRACT NO.: 63692				

SCALE: HORIZ. 1"=20' / VERT. 1"=5'  
PROJECT NO: 100493 STA. 88+00 TO STA. 92+50  
FED. ROAD DIST. NO. 1 ILLINOIS

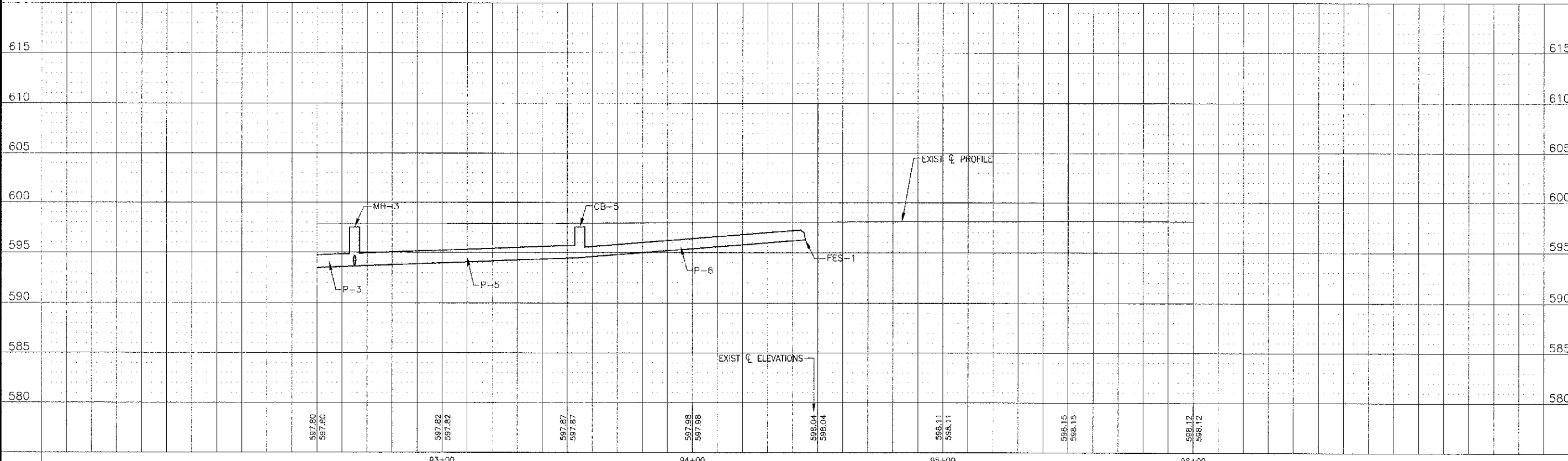
R:\CVS\741\_AVE\AUBURN\100493-CI\FILES\DWG\PLAN\100493-PLAN.DWG PF-039  
 Date: 2/23/12 2:32 PM By: luke  
 Copyright © 2012, by Woodman, Inc.  
 State of Illinois - Professional Design Firm  
 License No. 04-031791 - Expires 4-30-13



- LEGEND**
- SAN SANITARY MANHOLE TO BE ADJUSTED
  - ADJ INLET TO BE ADJUSTED
  - SP FRAME AND LID TO BE ADJUSTED (SPECIAL)

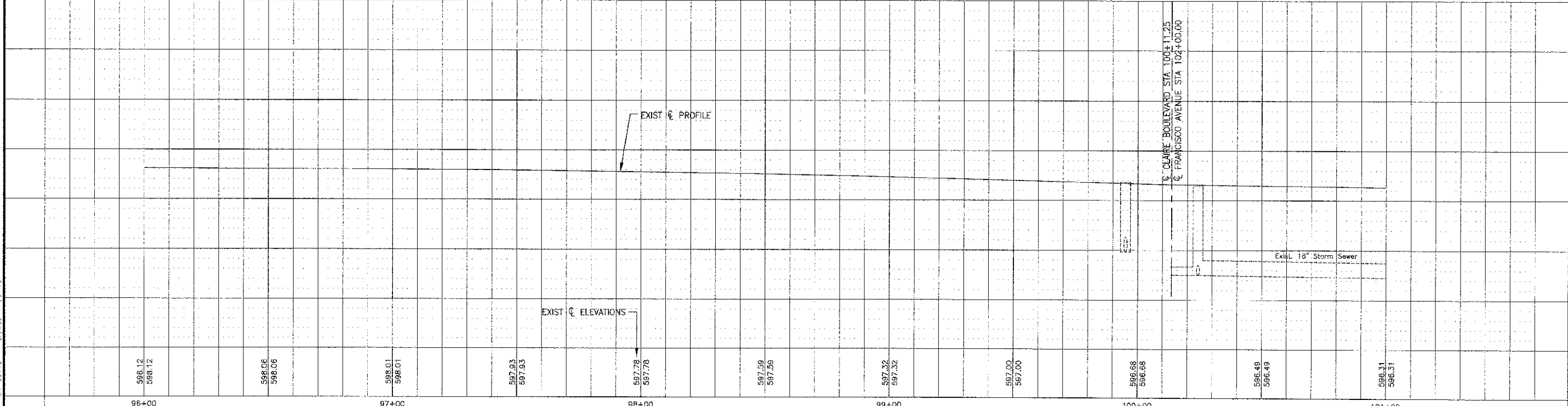
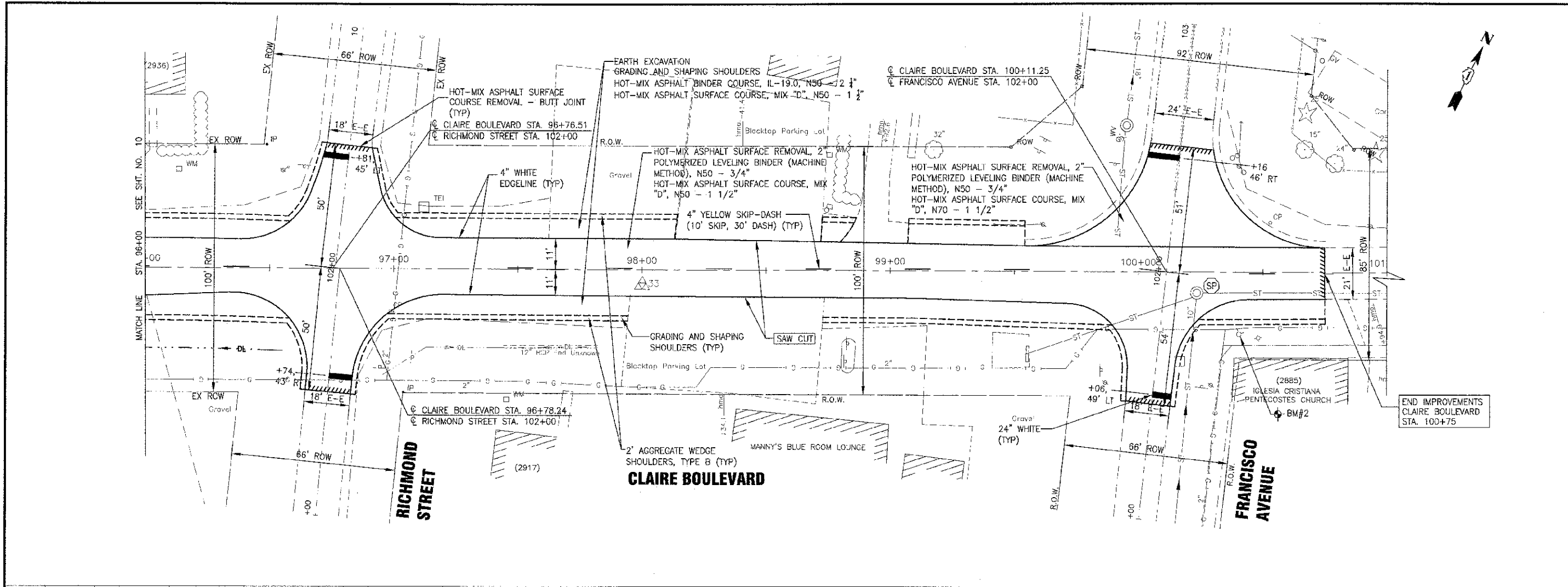
- STORM STRUCTURES**
- ST MH-3  
STA 92+65, 21' RT  
MANHOLE, TY A, TY 1 FR, CL 4' DIA  
RIM = 596.73  
INV 593.63 SW & NE 15"  
INV 593.69 S 12"
  - CB-2  
STA 92+60, 26' RT  
CATCH BASIN, TY C, TY 1 FR, OL  
RIM = 596.73  
INV 595.24 N 12"
  - CB-5  
STA 93+55, 25' RT  
CATCH BASIN, TY C, TY 1 FR, OL  
RIM = 597.53  
INV 594.49 SW 15"  
INV 594.49 NE 12"
  - FES-1  
STA 94+45, 32' RT  
PRECAST REINFORCED CONCRETE FLARED END  
SECTIONS 12"  
INV 596.27 NE

- STORM SEWER PIPES**
- P-4  
7 LF OF 12" STRG, TY 1 @ 2.21%  
TBF = 1.7 CY
  - P-5  
90 LF OF 15" STRG, TY 1 @ 0.96%  
TBF = 26.4 CY
  - P-6  
90 LF OF 12" STRG, TY 1 @ 1.98%  
TBF = 15.6 CY



	DESIGNED - REW	REVISED -	<b>STATE OF ILLINOIS</b> <b>DEPARTMENT OF TRANSPORTATION</b>	<b>PLAN AND PROFILE</b> <b>CLAIRE BOULEVARD</b>	F.A.U. RITE	SECTION	COUNTY	TOTAL SHEETS	SHEET NO.
	DRAWN - UKB	REVISED -			1596	10 0028-CO-RS	COOK	21	10
	CHECKED - EDH	REVISED -			CONTRACT NO.: 63692				
	DATE - 04-20-12	REVISED -			SCALE: HORIZ. 1"=20' / VERT. 1"=5' PROJECT NO: 100493 STA 96+00 TO STA 92+50				

I:\PROJECTS\100493\100493-CLARETT\DWG\100493-PLAN\DWG-PP-11  
 Date: 9/1/2012 3:30 PM By: JKB  
 State of Illinois - Professional Engineer  
 License No. - 187-02112 - Expires 4-30-13



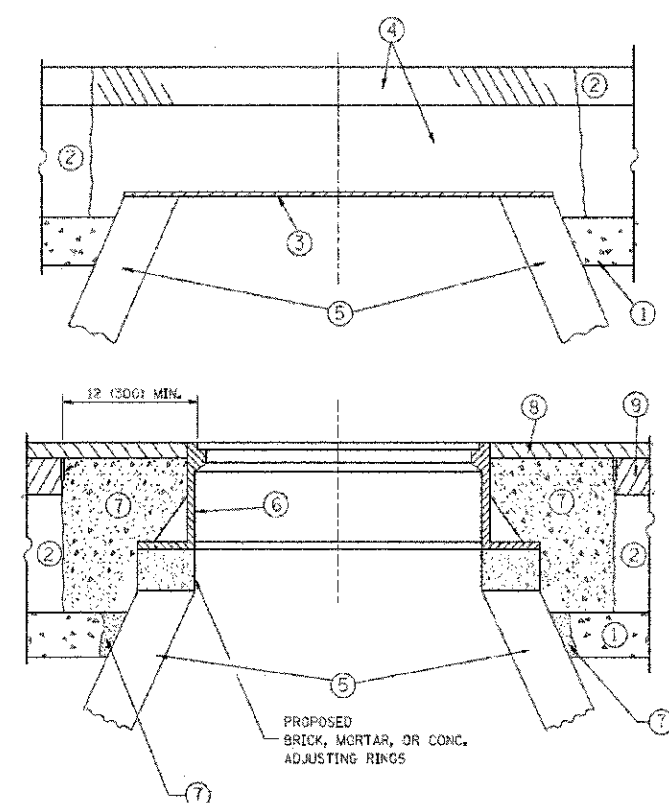
CURVICAL LANEWORKS 20443 CLARE BOULEVARD (CLARE) DEPARTMENT OF TRANSPORTATION - PLAN AND PROFILE - 11  
 Project: 10/2012 112 212 By: JKB  
 Checked: 10/2012 By: JKB & M. B. B. Inc.  
 Scale of Plans - Professional Design Firm  
 License No. - SR 00112 Expires 4/13

DESIGNED - REW	REVISED -
DRAWN - JKB	REVISED -
CHECKED - JKB	REVISED -
DATE - 04-20-12	REVISED -

**STATE OF ILLINOIS**  
**DEPARTMENT OF TRANSPORTATION**

**PLAN AND PROFILE**  
**CLAIRE BOULEVARD**  
 SCALE: HORIZ. 1"=20' / VERT. 1"=5'  
 PROJECT NO: 100493 STA. 96+00 TO STA. 101+00

F.A.U. RITE.	SECTION	COUNTY	TOTAL SHEETS	SHEET NO.
1596	10-00026-00-RS	COCK	21	11
CONTRACT NO.: 63692				



**CONSTRUCTION PROCEDURES**

- STAGE 1 (BEFORE PAVEMENT MILLING)**
- A) REMOVE A MINIMUM OF 12 (300) OF THE PAVEMENT FROM AROUND THE STRUCTURE.
  - B) REMOVE THE EXISTING FRAME AND LID FROM THE STRUCTURE.
  - C) COVER THE STRUCTURE OPENING WITH A 36 (900) DIAMETER METAL PLATE.
  - D) BACKFILL WITH CRUSHED STONE AND A MINIMUM 1 1/2 (40) THICK HMA SURFACE MIX APPROVED BY THE ENGINEER.

- STAGE 2 (AFTER PAVEMENT MILLING)**
- A) REMOVE THE HMA SURFACE MIX AND CRUSHED STONE.
  - B) INSTALL THE FRAME AND LID; ADJUST THE FRAME TO ITS FINAL SURFACE ELEVATION.
  - C) THE SURROUNDING SPACE SHALL BE FILLED WITH CLASS PP-1\* CONCRETE TO THE ELEVATION OF THE SURFACE OF THE EXISTING BASE COURSE OR THE BINDER COURSE.
- \* UNLESS OTHERWISE SPECIFIED IN THE PLANS.

THE PROCEDURE EXPLAINED ABOVE SHALL CONFORM TO THE APPLICABLE PORTIONS OF SECTIONS 353, 406, 602, AND 603 OF THE STANDARD SPECIFICATIONS EXCEPT THAT "THE CONTRACTOR SHALL ADJUST THE STRUCTURES TO THE FINISHED PAVEMENT ELEVATION NO MORE THAN 5 CALENDAR DAYS PRIOR TO PLACEMENT OF THE FINAL LIFT OF SURFACE UNLESS APPROVED BY THE ENGINEER."

**LEGEND**

- ① SUB-BASE GRANULAR MATERIAL
- ② EXISTING PAVEMENT
- ③ 36 (900) DIAMETER METAL PLATE
- ④ PROPOSED CRUSHED STONE AND HMA SURFACE MIX
- ⑤ EXISTING STRUCTURE
- ⑥ FRAME AND LID (SEE NOTES)
- ⑦ CLASS PP-1\* CONCRETE
- ⑧ PROPOSED HMA SURFACE COURSE
- ⑨ PROPOSED HMA BINDER COURSE

**NOTES:**

EXISTING BROKEN FRAMES AND LIDS SHALL BE REMOVED AND DISPOSED OF BY THE CONTRACTOR AND SHALL BE REPLACED AS DIRECTED BY THE ENGINEER. REPLACEMENT FRAMES AND LIDS WILL BE PAID FOR IN ACCORDANCE WITH ARTICLE 109.04 OF THE STANDARD SPECIFICATIONS UNLESS A SEPARATE PAY ITEM HAS BEEN PROVIDED.

IF THE EXISTING LIDS ARE OPEN, THE FRAME WILL BE ADJUSTED TO THE ELEVATION OF THE MILLED PAVEMENT SURFACE PRIOR TO THE MILLING OPERATION. THE FRAME WILL NOT BE REMOVED AND COVERED BY THE METAL PLATE.

CITY OF CHICAGO CASTINGS ARE THE PROPERTY OF THE CITY AND THE CONTRACTOR SHALL NOTIFY THE CITY FOR REMOVAL AND DISPOSITION OF THE CASTINGS.

THE METAL PLATE USED TO COVER THE STRUCTURE SHALL REMAIN THE PROPERTY OF THE CONTRACTOR.

WHEN STRUCTURES ARE TO BE ADJUSTED OR RECONSTRUCTED, THE LOWERING AND RAISING OF THE FRAMES AND LIDS WILL NOT BE PAID FOR SEPARATELY BUT WILL BE INCLUDED IN THE COST OF THE CORRESPONDING PAY ITEM.

**LOCATION OF STRUCTURES:**

THE CONTRACTOR WILL BE REQUIRED TO KEEP A RECORD OF THE LOCATIONS OF THE BURIED STRUCTURES ACCORDING TO THE STATION AND DISTANCE LEFT OR RIGHT OF THE CENTERLINE OF PAVEMENT. UPON COMPLETION OF THE WORK, THE CONTRACTOR WILL DELIVER THE RECORD TO THE ENGINEER.

**BASIS OF PAYMENT:**

REMOVING FRAMES AND LIDS ON DRAINAGE AND UTILITY STRUCTURES IN THE PAVEMENT PRIOR TO MILLING, AND ADJUSTING TO FINAL GRADE PRIOR TO PLACING THE SURFACE COURSE, WILL BE PAID FOR AT THE CONTRACT UNIT PRICE EACH FOR "FRAMES AND LIDS TO BE ADJUSTED (SPECIAL)."

THIS WORK WILL NOT BE PAID FOR WHEN DRAINAGE AND UTILITY STRUCTURES ARE SPECIFIED FOR PAYMENT AS STRUCTURE RECONSTRUCTION.

NEW FRAMES AND LIDS, WHEN SPECIFIED, WILL BE PAID FOR SEPARATELY.

**DETAILS FOR FRAMES AND LIDS ADJUSTMENT WITH MILLING**

ALL DIMENSIONS ARE IN INCHES (MILLIMETERS) UNLESS OTHERWISE SHOWN

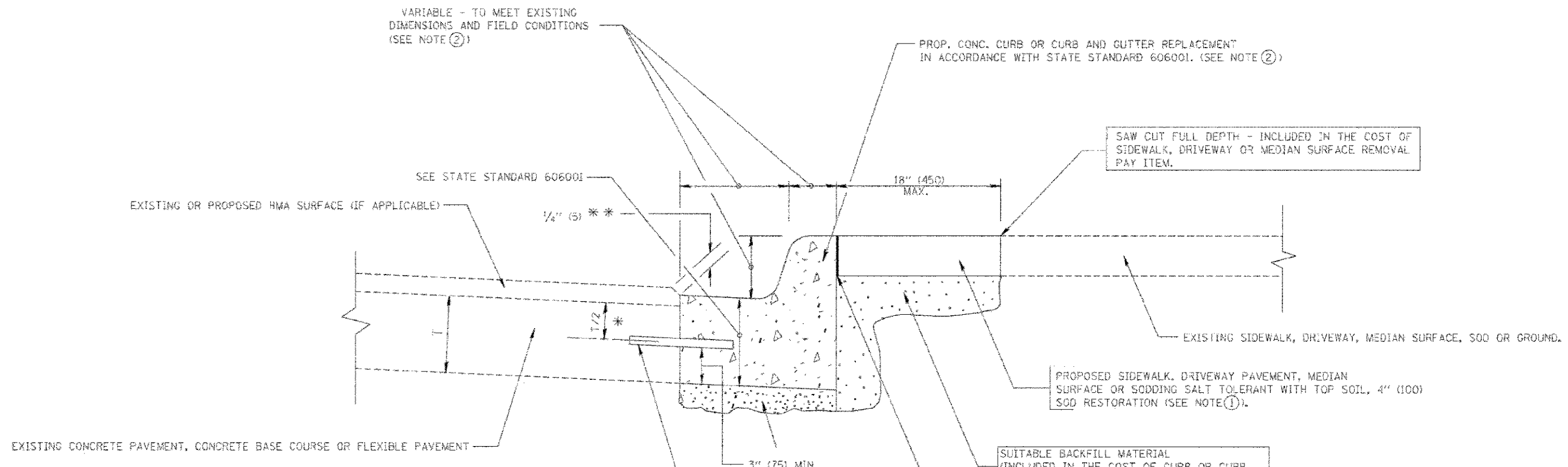
CONTRACT NO. 201 BY MATTHEW J. REIDMAN, INC. ...  
 STATE OF ILLINOIS - PROFESSIONAL DESIGN FIRM ...  
 LICENSE NO. 184-000221 - EXPIRES 7/30/2011 ...  
 285 S. W. ...  
 CHICAGO, ILLINOIS 60606

FILE NAME =	USER NAME =	DESIGNED - R. SHAN	REVISED - R. WIECEMAN 05-14-04
		DRAWN -	REVISED - R. BORO 01-01-07
		CHECKED -	REVISED - R. BORO 03-09-11
		DATE - 10-25-94	REVISED - R. BORO 12-06-11

**STATE OF ILLINOIS  
DEPARTMENT OF TRANSPORTATION**

SCALE: NONE		SHEET NO. 1 OF 1 SHEETS		STA. TO STA.
-------------	--	-------------------------	--	--------------

F&U BYE.	SECTION	COUNTY	TOTAL SHEETS	SHEET NO.
1596	10-00026-00-RS	COOK	21	12
BD600-03 (BD-8)		CONTRACT NO. 63692		
FED. ROAD DIST. NO. 1 ILLINOIS FED. AID PROJECT				



- \* 3" (75) MINIMUM FROM TOP AND BOTTOM OF THE CONCRETE PAVEMENT OR BASE COURSE.
  - \*\* IF THE FINAL SURFACE OF THE PAVEMENT IS CONCRETE, THE GUTTER IS TO BE FLUSH WITH THE PAVEMENT.
- NOTE: ① SIDEWALK, DRIVEWAY PAVEMENT OR MEDIAN SURFACE SHALL BE SIMILAR TO THE MATERIAL BEING REMOVED AND WILL BE PAID FOR SEPARATELY.
- SODDING, SALT TOLERANT AND TOP SOIL, FURNISH AND PLACE 4" WILL BE PAID FOR SEPARATELY.
- ② FERTILIZER FOR THE PLACEMENT OF THE SOD IS NOT REQUIRED
  - ③ CURB OR CURB AND GUTTER REPLACEMENT SHALL MATCH THE SHAPE OF THE EXISTING CURB OR CURB AND GUTTER UNLESS OTHERWISE SPECIFIED.
  - ④ FOR CURB OR CURB AND GUTTER REMOVAL AND REPLACEMENT ADJACENT TO FLEXIBLE PAVEMENT DELETE EPOXY COATED TIE BARS.
  - ⑤ LONGITUDINAL BARS, IF ENCOUNTERED IN THE EXISTING CURB OR CURB AND GUTTER, ARE NOT TO BE REPLACED. CUTTING AND REMOVING LONGITUDINAL BARS SHALL BE INCLUDED IN THE COST OF CURB OR CURB AND GUTTER REMOVAL AND REPLACEMENT.
  - ⑥ THE COST OF HMA SURFACE REMOVAL IN THE EXISTING GUTTER FLAG SHALL BE INCLUDED IN THE COST OF THE CURB AND GUTTER REMOVAL AND REPLACEMENT.
  - ⑦ THE REMOVAL AND REPLACEMENT OF THE EXISTING CURB OR CURB AND GUTTER SHALL BE DONE IN ACCORDANCE WITH THE APPLICABLE PORTIONS OF SECTION 440 AND 606 OF THE STANDARD SPECIFICATIONS.
  - ⑧ THE LOCATIONS OF REMOVAL AND REPLACEMENT OF EXISTING CURB OR CURB AND GUTTER SHALL BE DETERMINED BY THE RESIDENT ENGINEER AT THE TIME OF CONSTRUCTION.

- SUITABLE BACKFILL MATERIAL (INCLUDED IN THE COST OF CURB OR CURB AND GUTTER REMOVAL AND REPLACEMENT)
- PROPOSED 3/4" (20) PREFORMED EXPANSION JOINT AT CONCRETE SIDEWALKS, DRIVEWAYS, AND MEDIANS. (INCLUDED IN THE COST OF CURB OR CURB AND GUTTER REMOVAL AND REPLACEMENT.)
- UNSUITABLE SUB-BASE MATERIAL TO BE REMOVED, IF DIRECTED BY THE ENGINEER, SHALL BE REPLACED WITH EITHER SUB-BASE GRANULAR MATERIAL, TYPE B OR ADDITIONAL THICKNESS OF CONCRETE.
- REMOVAL AND REPLACEMENT 4" (100) OR LESS IS INCLUDED IN THE COST OF CURB OR CURB AND GUTTER REMOVAL AND REPLACEMENT.
- REMOVAL AND REPLACEMENT IN EXCESS OF 4" (100) WILL BE PAID FOR IN ACCORDANCE WITH ARTICLE 109.04 OF THE STANDARD SPECIFICATIONS.
- PROPOSED #6 (20) EPOXY COATED TIE BARS 24" (600) LONG AT 24" (600) CENTERS WILL NOT BE PAID FOR SEPARATELY. DELETE EPOXY COATED TIE BARS IF EXISTING TIE BARS ARE USABLE AS DETERMINED BY THE ENGINEER. (SEE NOTE ③).

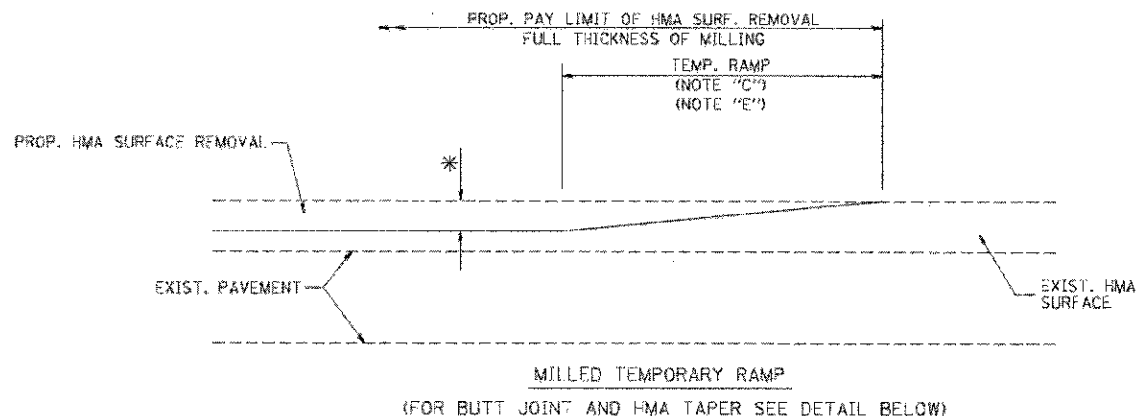
**BASIS OF PAYMENT:**  
 THIS WORK WILL BE PAID FOR AT THE CONTRACT UNIT PRICE PER FOOT (METER) FOR "CURB REMOVAL AND REPLACEMENT" OR "COMBINATION CONCRETE CURB AND GUTTER REMOVAL AND REPLACEMENT".

## CURB OR CURB AND GUTTER REMOVAL AND REPLACEMENT

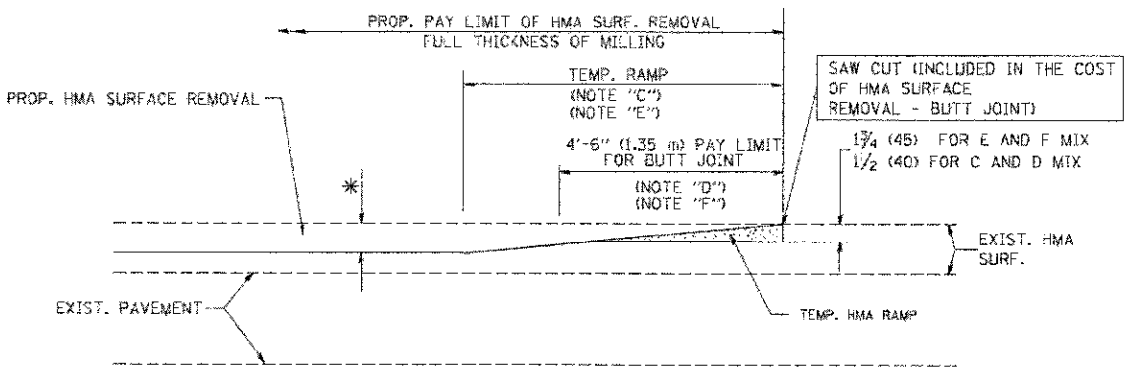
ALL DIMENSIONS ARE IN INCHES (MILLIMETERS) UNLESS OTHERWISE SHOWN.

COPYRIGHT © 2015 BY DANIEL J. WOODMAN, INC.  
 1125 W. 15TH ST., SUITE 200, CHICAGO, IL 60604  
 TEL: (773) 525-1500 FAX: (773) 525-1501  
 WWW.DJWOODMAN.COM

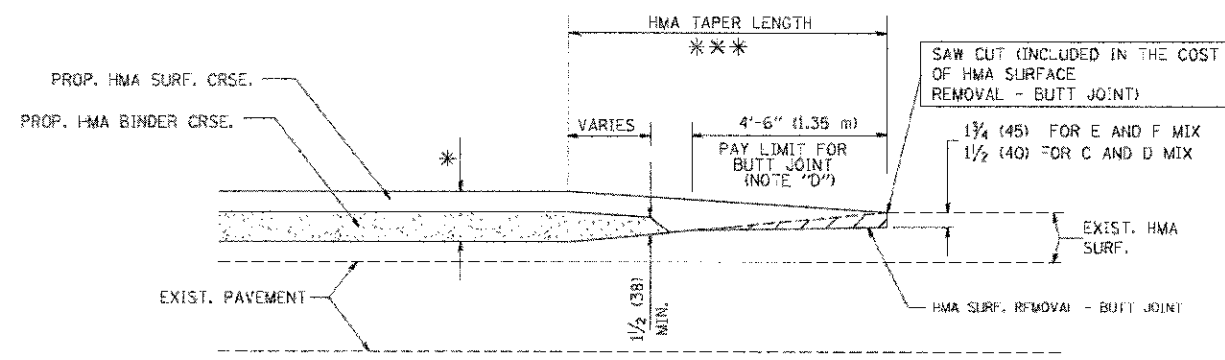
FILE NAME =	USER NAME = dntvkeasgn	DESIGNED - A. HOUSEH	REVISED - R. SHAH 10-03-96	<b>STATE OF ILLINOIS DEPARTMENT OF TRANSPORTATION</b>	<b>CURB OR CURB AND GUTTER REMOVAL AND REPLACEMENT</b>	F.A.D. RATE	SECTION	COUNTY	TOTAL SHEETS	
PLT SCALE = 68.888 1/4 IN.	DRAWN -	REVISED - A. ABBAS 03-21-97	1596			10-00026-00-RS	COOK	21	13	
PLT DATE = 02/19/2009	CHECKED -	REVISED - M. GOMEZ 01-22-01	<b>8080-06 (RD-24)</b>				CONTRACT NO. 63692			
	DATE - 03-11-94	REVISED - R. BORO 12-15-00	FED. ROAD DIST. NO. 1 ILLINOIS FED. AID PROJECT							
					SCALE: NONE	SHEET NO. 1 OF 1 SHEETS		STA.	TD STA.	



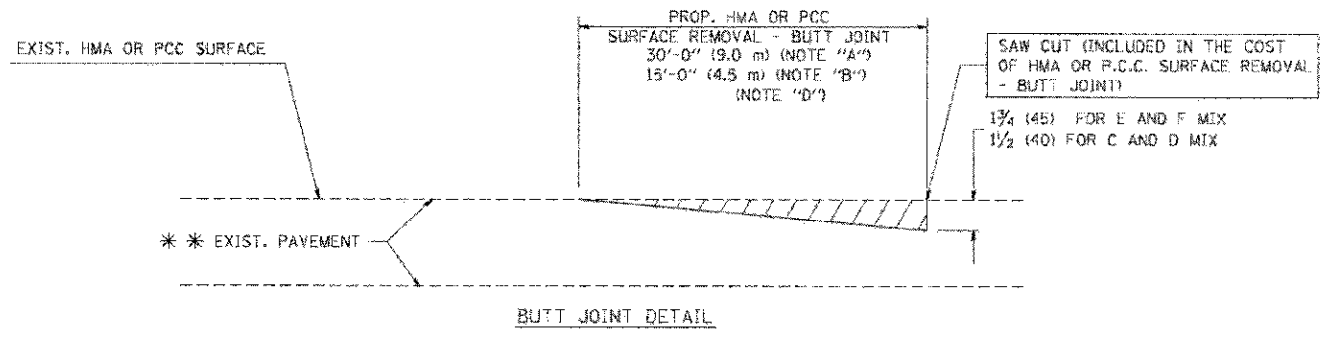
OPTION 1



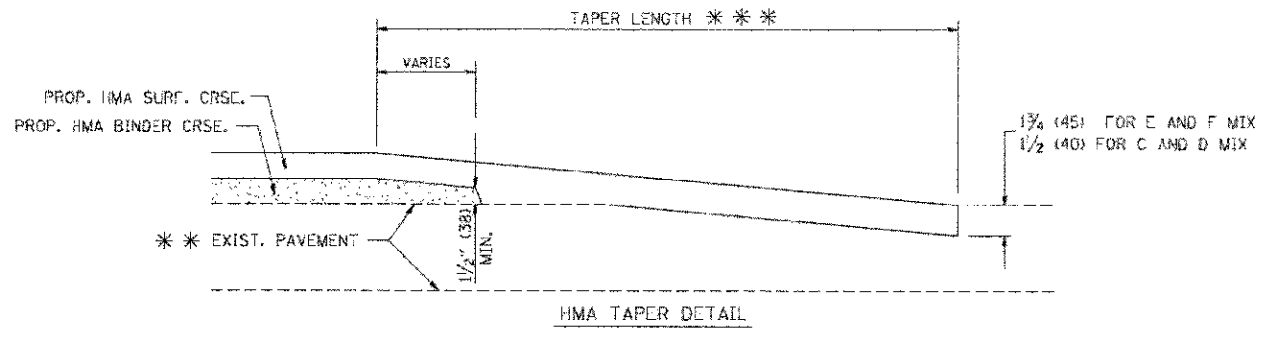
OPTION 2  
TYPICAL TEMPORARY RAMP



TYPICAL BUTT JOINT AND HMA TAPER FOR MILLING AND RESURFACING



BUTT JOINT DETAIL



HMA TAPER DETAIL

TYPICAL BUTT JOINT AND HMA TAPER FOR RESURFACING ONLY

\*\*\* PC CONCRETE, HMA OR HMA RESURFACED PAVEMENT.

NOTES

- A: MAINLINE ROADWAYS AND MAJOR SIDE ROADS.
- B: MINOR SIDE ROADS.
- C: THE TEMP. RAMP SHALL BE CONSTRUCTED IMMEDIATELY UPON REMOVAL OF THE EXISTING HMA SURFACE.
- D: THE BUTT JOINT SHALL BE CONSTRUCTED IMMEDIATELY PRIOR TO PLACING THE PROPOSED HMA COURSES.
- E: TAPER THE TEMP. RAMP AT A RATE OF 3'-0" (900 mm) PER 1 INCH (25 mm) OF MILLING THICKNESS.
- F: INSTALLATION AND REMOVAL OF THE 4'-6" (1.35 m) TEMP. RAMP IS INCLUDED IN COST OF HMA SURFACE REMOVAL - BUTT JOINT
- G: SEE ARTICLE 406.08 AND 406.14 OF THE STANDARD SPECIFICATIONS FOR "HMA AND/OR PCC SURFACE REMOVAL, BUTT JOINT".
- \* SEE TYPICAL SECTIONS FOR MILLING THICKNESS.
- \*\*\* 20'-0" (6.1 m) PER 1 (25) RESURFACING (NOTE "A")  
10'-0" (3.0 m) PER 1 (25) RESURFACING (NOTE "B")

BASIS OF PAYMENT:

THE BUTT JOINT WILL BE PAID FOR AT THE CONTRACT UNIT PRICE PER SQUARE YARD (SQUARE METER) FOR "1 1/2" MIX ASPHALT SURFACE REMOVAL - BUTT JOINT" OR FOR "PORTLAND CEMENT CONCRETE SURFACE REMOVAL - BUTT JOINT".

ALL DIMENSIONS ARE IN INCHES (MILLIMETERS) UNLESS OTHERWISE SHOWN.

CONCEPT: PLO BY BATES & GORDMAN INC. 11/10/04  
 STATE OF ILLINOIS DEPARTMENT OF TRANSPORTATION  
 LICENSE NO. 184-000817 EXP. 06/30/2013  
 110 Crystal Lake, Illinois 60012  
 815/271-2291 2/26/10

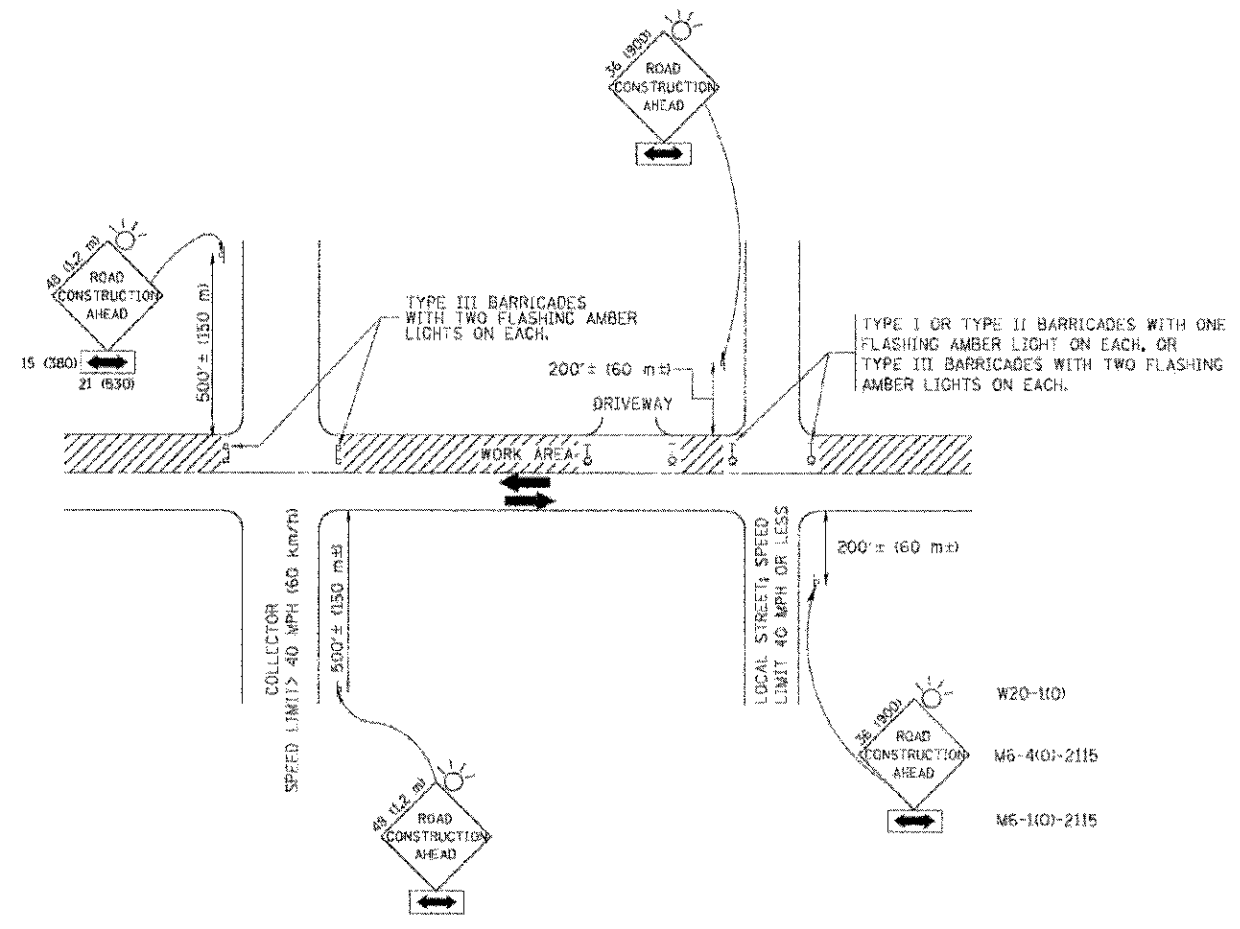
FILE NAME =	USER NAME = gajlennet	DESIGNED - M. DE YONG	REVISED - R. SHAH 10-29-94
M:\data\tech\22e34\1-d32.dgn		DRAWN -	REVISED - A. ABBAS 03-21-97
		CHECKED -	REVISED - M. GOMEZ 04-06-01
		DATE - 06-13-90	REVISED - R. BORD 01-01-07

STATE OF ILLINOIS  
DEPARTMENT OF TRANSPORTATION

BUTT JOINT AND HMA TAPER DETAILS			
SCALE: NONE	SHEET NO. 1 OF 1 SHEETS	STA.	TO STA.

F.A.S. R.T.E.	SECTION	COUNTY	TOTAL SHEETS	SHEET NO.
1596	10 00020 00 RS	COOK	21	14
BD460-05 BD32			CONTRACT NO. 63692	
FED. ROAD DIST. NO. 1 [ILLINOIS] FED. AID PROJECT				

COPYRIGHT © 2011 BY BENTLEY SYSTEMS, INC. ALL RIGHTS RESERVED. THIS SOFTWARE IS THE PROPERTY OF BENTLEY SYSTEMS, INC. AND IS LOANED TO YOUR COMPANY. IT IS NOT TO BE REPRODUCED OR TRANSMITTED IN ANY FORM OR BY ANY MEANS, ELECTRONIC OR MECHANICAL, INCLUDING PHOTOCOPYING, RECORDING, OR BY ANY INFORMATION STORAGE AND RETRIEVAL SYSTEM. WITHOUT THE WRITTEN PERMISSION OF BENTLEY SYSTEMS, INC.



**TRAFFIC CONTROL AND PROTECTION FOR SIDE ROADS, INTERSECTIONS, AND DRIVEWAYS**

**NOTES:**

- A. FOR NO LANE RESTRICTION ON THE SIDE ROAD OR DRIVEWAYS
  - 1. SIDE ROAD WITH A SPEED LIMIT OF 40 MPH (60 km/h) OR LESS AS SHOWN ON THE DRAWING AND AS DIRECTED BY THE ENGINEER:
    - a) ONE ROAD CONSTRUCTION AHEAD SIGN 36 x 36 (900x900) WITH A FLASHER AND FLAG MOUNTED ON IT APPROXIMATELY 200' (60 m) IN ADVANCE OF THE MAIN ROUTE.
    - b) THE CLOSED PORTION OF THE MAIN ROUTE SHALL BE PROTECTED BY BLOCKING WITH TYPE I, TYPE II OR TYPE III BARRICADES, 1/3 OF THE CROSS SECTION OF THE CLOSED PORTION.
  - 2. SIDE ROAD WITH A SPEED LIMIT GREATER THAN 40 MPH (60 km/h) AS SHOWN ON THE DRAWING AND AS DIRECTED BY THE ENGINEER:
    - a) ONE ROAD CONSTRUCTION AHEAD SIGN 48 x 48 (1.2 m x 1.2 m) WITH A FLASHER MOUNTED ON IT APPROXIMATELY 500' (150 m) IN ADVANCE OF THE MAIN ROUTE.
    - b) THE CLOSED PORTION OF THE MAIN ROUTE SHALL BE PROTECTED BY BLOCKING WITH TYPE III BARRICADES, 1/2 OF THE CROSS SECTION OF THE CLOSED PORTION.
  - 3. WHEN THE SIDE ROAD LIES BETWEEN THE BEGINNING OF THE MAINLINE SIGNING AND THE WORK ZONE, A SINGLE HEADED ARROW (M6-1) SHALL BE USED IN LIEU OF THE DOUBLE HEADED ARROW (M6-4).
- B. FOR A LANE CLOSURE ON A SIDE ROAD OR DRIVEWAY:
  - USE APPLICABLE PORTIONS OF THE TYPICAL APPLICATION OF TRAFFIC CONTROL DEVICES (STD. T01501, STD. T01606 OR THE APPROPRIATE STANDARD). THE SPACING OF SIGNS AND BARRICADES SHALL BE ADJUSTED FOR FIELD CONDITIONS AS DIRECTED BY THE ENGINEER. THE DIRECTIONAL ARROW SHALL BE COVERED OR REMOVED WHEN NO LONGER CONSISTENT WITH THE SIDE ROAD LANE CLOSURE.
  - C. ADVANCE WARNING SIGNS ARE TO BE OMITTED ON DRIVEWAY UNLESS OTHERWISE NOTED.
  - D. THE TRAFFIC CONTROL AND PROTECTION FOR SIDE ROADS, INTERSECTIONS, AND DRIVEWAYS SHALL BE INCIDENTAL TO THE COST OF SPECIFIED TRAFFIC CONTROL STANDARDS OR ITEMS.

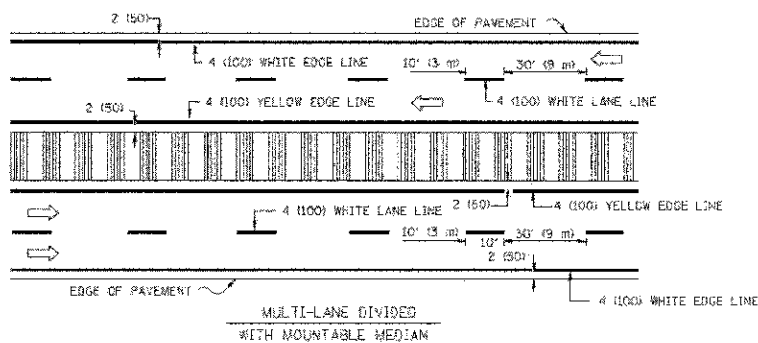
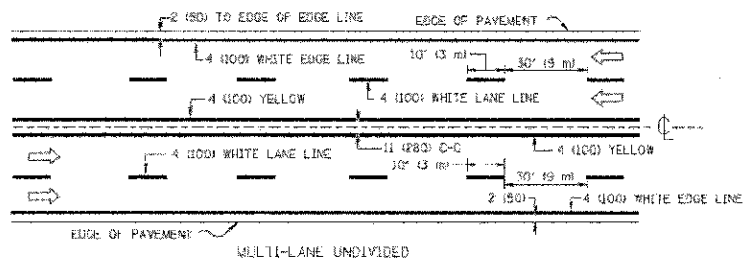
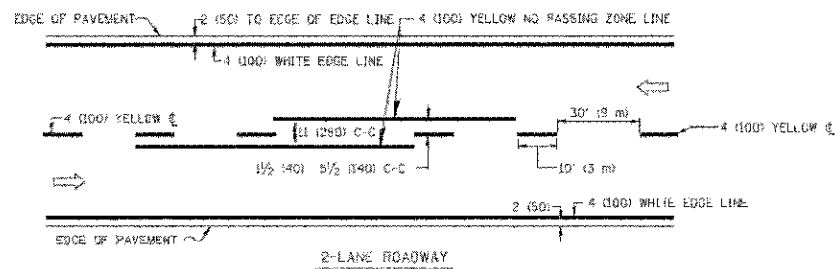
All dimensions are in millimeters (inches) unless otherwise shown.

FILE NAME =	USER NAME = gajtranolt	DESIGNED - LHA	REVISED - J. OBERLE 10-18-95
W:\data\12\22x24\ta28.dgn		DRAWN -	REVISED - A. HOUSEN 03-06-96
	PLOT SCALE = 50.000 / 1 DL	CHECKED -	REVISED - A. HOUSEN 10-18-98
	PLOT DATE = 1/4/2009	DATE - 05-99	REVISED - T. RAMMACHER 01-06-00

**STATE OF ILLINOIS  
DEPARTMENT OF TRANSPORTATION**

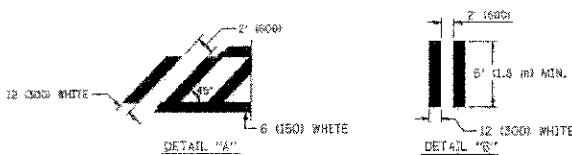
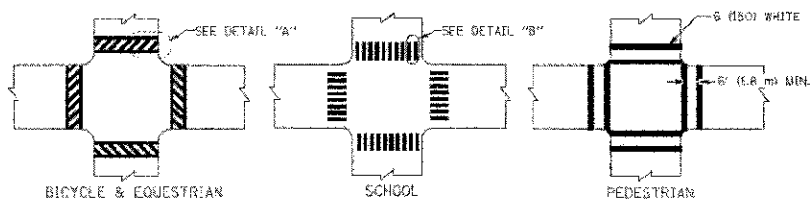
<b>TRAFFIC CONTROL AND PROTECTION FOR SIDE ROADS, INTERSECTIONS, AND DRIVEWAYS</b>	
SCALE: NONE	SHEET NO. 1 OF 1 SHEETS STA. TO STA.

FILE NO.	SECTION	COUNTY	TOTAL SHEETS	SHEET NO.
1536	10-00026-00-R5	COOK	21	15
<b>TC-10</b>			CONTRACT NO. 63692	
FED. ROAD DIST. NO. 1 (ILLINOIS) FED. AID PROJECT				

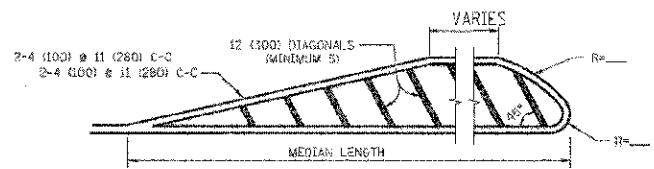
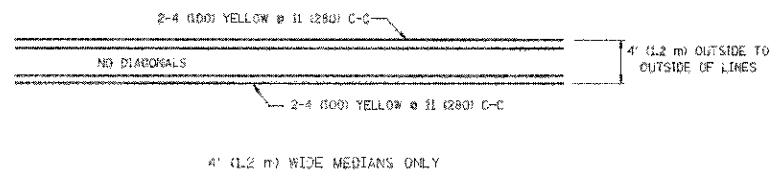


NOTE: MEDIANS WITH BARRIER CURB DO NOT REQUIRE AN EDGE LINE

TYPICAL LANE AND EDGE LINE MARKING

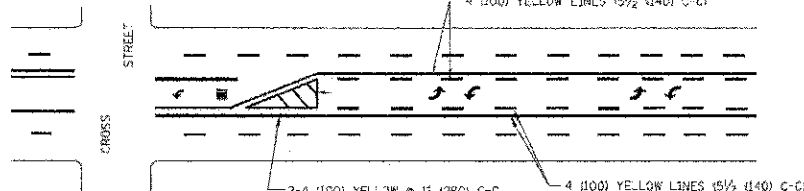


TYPICAL CROSSWALK MARKING

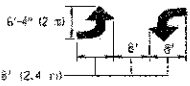


FOR MEDIAN LENGTHS WHERE DIAGONAL SPACING CANNOT BE ATTAINED, USE 5 (FIVE) EQUALLY SPACED DIAGONAL LINES.  
 DIAGONAL LINE SPACING: 50' (15 m) C-C (LESS THAN 30MPH (50 km/h))  
 75' (23 m) C-C (30MPH (50 km/h) TO 45MPH (70 km/h))  
 150' (45 m) C-C (OVER 45MPH (70 km/h))

MEDIANS OVER 4' (1.2 m) WIDE

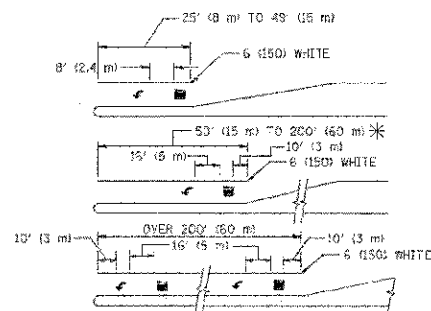


A MINIMUM OF TWO PAIRS OF TURN ARROWS SHALL BE USED, WHITE IN COLOR. ADDITIONAL PAIRS SHALL BE PLACED AT 200' (60 m) TO 300' (90 m) INTERVALS.



MEDIAN WITH TWO-WAY LEFT TURN LANE

TYPICAL PAINTED MEDIAN MARKING

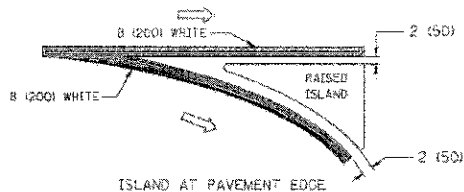
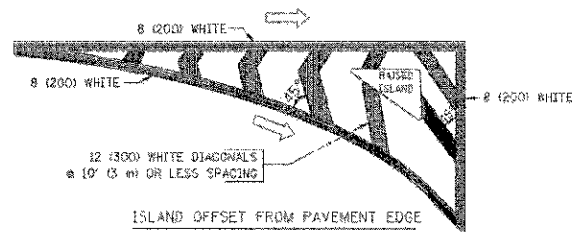


FULL SIZE LETTERS 8" (2.4 m) AND ARROWS SHALL BE USED. AREA = 15.6 SQ. FT. (1.5 m<sup>2</sup>) ONLY AREA = 20.8 SQ. FT. (1.9 m<sup>2</sup>)

\* TURN LANES IN EXCESS OF 400' (120 m) IN LENGTH MAY HAVE AN ADDITIONAL SET OF ARROW - "ONLY" INSTALLED MIDWAY BETWEEN THE OTHER TWO SETS OF ARROW - "ONLY".

TYPICAL LEFT (OR RIGHT) TURN LANE

TYPICAL TURN LANE MARKING



TYPICAL ISLAND MARKING

TYPE OF MARKING	WIDTH OF LINE	PATTERN	COLOR	SPACING / REMARKS
DEFINITION ON 2 LANE PAVEMENT	4 (100)	SKIP-DASH	YELLOW	10' (3 m) LWF WITH 30' (9 m) SPAFF
CENTERLINE ON MULTI-LANE UNDIVIDED PAVEMENT	2 @ 4 (100)	SOLID	YELLOW	11 (280) C-C
NO PASSING ZONE LINES FOR ONE DIRECTION FOR BOTH DIRECTIONS	4 (100) 2 @ 4 (100)	SOLID SOLID	YELLOW YELLOW	5/2 (140) C-C FROM SKIP-DASH CENTERLINE 11 (280) C-C OMIT SKIP-DASH CENTERLINE BETWEEN
LANE LINES	4 (100) 6 (150) ON FREEWAYS	SKIP-DASH SKIP-DASH	WHITE WHITE	10' (3 m) LWF WITH 30' (9 m) SPACE
DOTTED LINES (EXTENSIONS OF CENTER, LANE OR TURN LANE MARKINGS)	SAME AS LINE BEING EXTENDED	SKIP-DASH	SAME AS LINE BEING EXTENDED	2' (600) LINE WITH 6' (1.8 m) SPACE
EDGE LINES	4 (100)	SOLID	YELLOW-LEFT WHITE-RIGHT	OUTLINE MOUNTABLE MEDIANS IN YELLOW. EDGE LINES ARE NOT USED NEXT TO BARRIER CURB
TURN LANE MARKINGS	6 (150) LINE; FULL SIZE LETTERS & SYMBOLS (8" (2.4 m))	SOLID	WHITE	SEE TYPICAL TURN LANE MARKING DETAIL
TWO WAY LEFT TURN MARKING	2 @ 4 (100) EACH DIRECTION 8' (2.4 m) LEFT ARROW	SKIP-DASH AND SOLID IN PAIRS	YELLOW WHITE	10' (3 m) LWF WITH 30' (9 m) SPACE FOR SKIP-DASH. 5/2 (140) C-C BETWEEN SOLID LINE AND SKIP-DASH LINE SEE TYPICAL TWO-WAY LEFT TURN MARKING DETAIL
CROSSWALK LINES (PEDESTRIAN) A. DIAGONALS (BIKE & EQUESTRIAN) B. LONGITUDINAL BARS (SCHOOL)	2 @ 6 (150) 12 (300) @ 45° 12 (300) @ 90°	SOLID SOLID SOLID	WHITE WHITE WHITE	NOT LESS THAN 6' (1.8 m) APART 2' (600) APART SEE TYPICAL CROSSWALK MARKING DETAILS.
STOP LINES	24 (600)	SOLID	WHITE	PLACE 45.0 m IN ADVANCE OF AND PARALLEL TO CROSSWALK, IF PRESENT. OTHERWISE, PLACE AT DESIRED STOPPING POINT, PARALLEL TO CROSSROAD CENTERLINE, WHERE POSSIBLE
PAINTED MEDIANS	2 @ 4 (100) WITH 12 (300) DIAGONALS @ 45° NO DIAGONALS USED FOR 4' (1.2 m) WIDE MEDIANS	SOLID	YELLOW: TWO WAY TRAFFIC WHITE: ONE WAY TRAFFIC	11 (280) C-C FOR THE DOUBLE LINE SEE TYPICAL PAINTED MEDIAN MARKING.
CORE MARKING AND CHANNELIZING LINES	8 (200) WITH 12 (300) DIAGONALS @ 45°	SOLID	WHITE	DIAGONALS: 15' (4.5 m) C-C (LESS THAN 30MPH (50 km/h)) 20' (6 m) C-C (30MPH (50 km/h) TO 45MPH (70 km/h)) 30' (9 m) C-C (OVER 45MPH (70 km/h))
RAILROAD CROSSING	24 (600) TRANSVERSE LINES; "RR" IS 6' (1.8 m) LETTERS; 16 (400) LINE FOR "X"	SOLID	WHITE	SEE STATE STANDARD 780001 AREA OF: "R"=3.6 SQ. FT. (0.33 m <sup>2</sup> ) EACH "X"=84.0 SQ. FT. (7.8 m <sup>2</sup> )
SHOULDER DIAGONALS	12 (300) @ 45°	SOLID	WHITE - RIGHT YELLOW - LEFT	50' (15 m) C-C (LESS THAN 30MPH (50 km/h)) 75' (23 m) C-C (30 MPH (50 km/h) TO 45MPH (70 km/h)) 150' (45 m) C-C (OVER 45MPH (70 km/h))

FOR FURTHER DETAILS ON PAVEMENT MARKING REFER TO STANDARD SPECIFICATIONS FOR ROAD AND BRIDGE CONSTRUCTION AND STATE STANDARD 780001.

All dimensions are in inches (millimeters) unless otherwise shown.

CONTRACT NO. 15-00026-00-RS  
 DISTRICT ONE  
 TYPICAL PAVEMENT MARKINGS  
 SHEET NO. 1 OF 1 SHEETS  
 STA. TO STA.  
 SCALE: NONE  
 DATE: 03-19-90  
 DESIGNED: EVERS  
 DRAWN: J. RAMMACHER  
 CHECKED: C. JUCKIS  
 DATE: 03-19-90

FILE NAME	USER NAME	DESIGNED	REVISED
15-00026-00-RS-01	J. RAMMACHER	EVERS	-T. RAMMACHER 10-27-94
			REVISED -C. JUCKIS 09-05-09
			REVISED -
			REVISED -

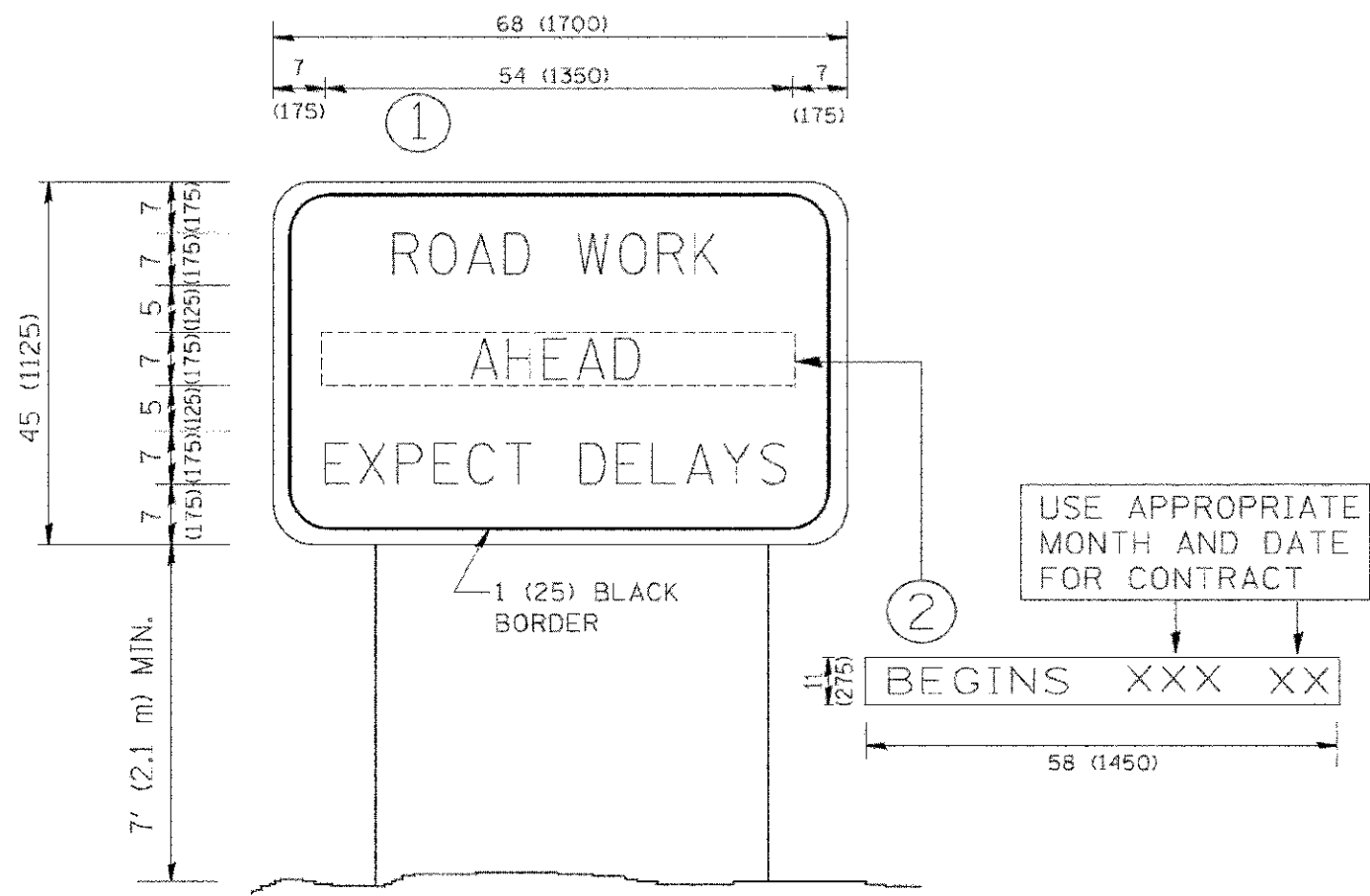
**STATE OF ILLINOIS**  
**DEPARTMENT OF TRANSPORTATION**

DISTRICT ONE		TOTAL SHEETS	
TYPICAL PAVEMENT MARKINGS		16	
SCALE: NONE	SHEET NO. 1 OF 1 SHEETS	STA.	TO STA.

F.A.U. P.E.	SECTION	COUNTY	TOTAL SHEETS	SHEET NO.
1596	10-00026-00-RS	COOK	21	16
TC-13		CONTRACT NO. 63692		
FED. ROAD DIST. NO. 1 (ILLINOIS) FED. AID PROJECT				



COMPANY & JOB BY BATES & BERGMAN, INC.  
 STATE OF ILLINOIS  
 LICENSE NO. 187-00191 - EXPIRES 4/30/2013  
 12/28/2011 10:05 PM  
 \*\*Vector\user\DW\Infile\1011  
 \*\*S:\mbr\dw\user\1011\1011.dwg  
 \*\*C:\stroll\1011\1011.dwg



NOTES:

1. USE BLACK LETTERING ON ORANGE BACKGROUND.
2. ERECT SIGNS IN ADVANCE OF THE LOCATION FOR THE "ROAD CONSTRUCTION AHEAD" SIGN AT LOCATIONS AS DIRECTED BY THE ENGINEER.
3. ERECT SIGN ① WITH INSTALLED PANEL ② ONE WEEK PRIOR TO THE START OF CONSTRUCTION.
4. REMOVE PANEL ② SOON AFTER THE START OF CONSTRUCTION.
5. SEE SPECIAL PROVISION FOR "TEMPORARY INFORMATION SIGNING" FOR ADDITIONAL INFORMATION.
6. ONE SIGN ASSEMBLY EQUALS 25.70 SQ. FT. (2.3 SQ. M.)
7. SHALL BE PAID FOR AS TEMPORARY INFORMATION SIGNING.

ALL DIMENSIONS ARE IN INCHES (MILLIMETERS) UNLESS OTHERWISE SHOWN.

FILE NAME = m:\data\1011\1011.dwg	USER NAME = jgglamods	DESIGNED - DRAWN -	REVISED - REVISED -
	PLOT SCALE = 88.000 / 1 IN	CHECKED -	REVISED -
	PLOT DATE = 1/4/2009	DATE -	REVISED -
			R. MIRS 09-15-97
			R. MIRS 12-11-97
			T. RAMMACHER 02-02-99
			C. JUCIUS 01-31-07

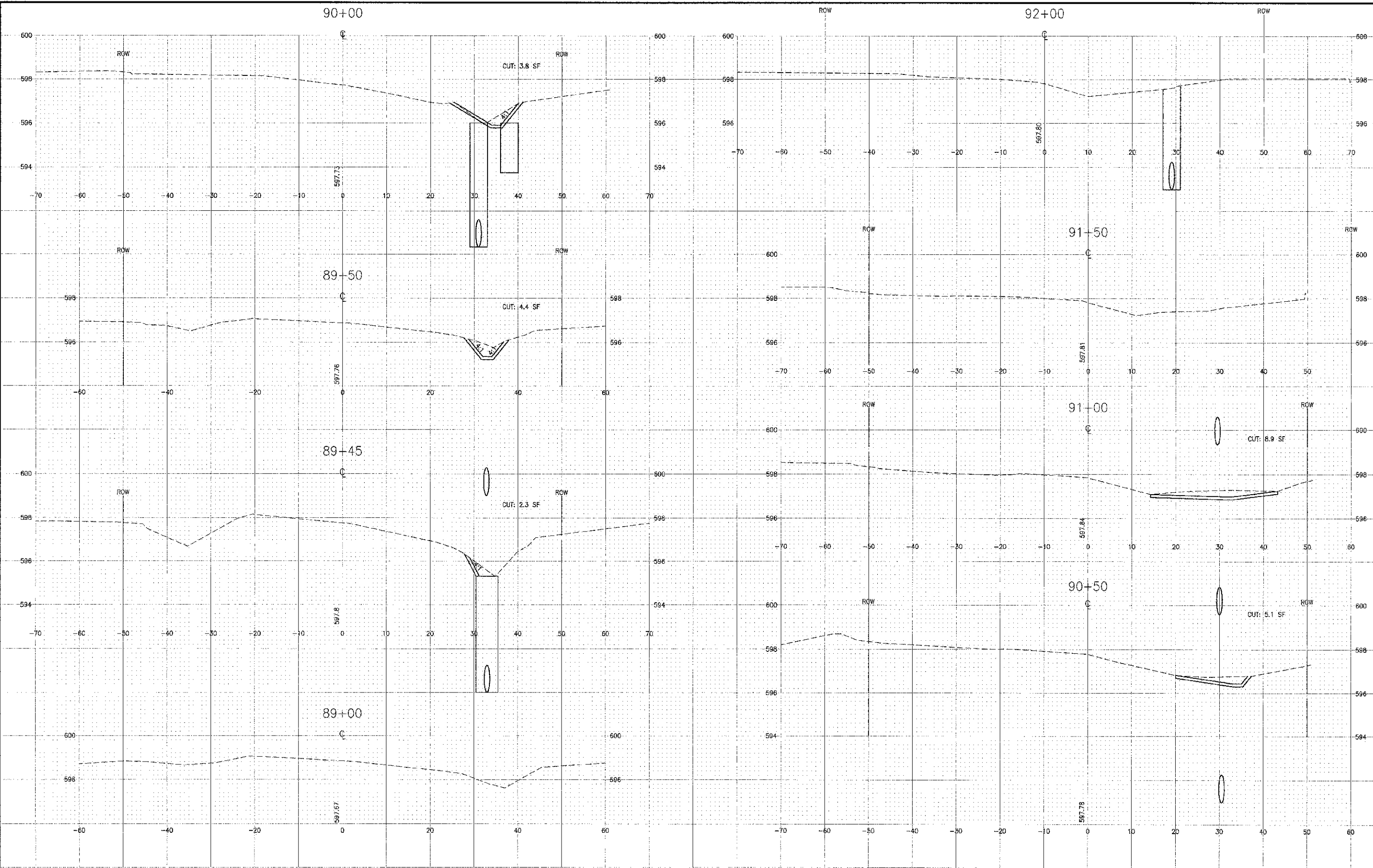
STATE OF ILLINOIS  
 DEPARTMENT OF TRANSPORTATION

ARTERIAL ROAD INFORMATION SIGN			
SCALE: NONE	SHEET NO. 1 OF 1 SHEETS	STA.	TO STA.

F.A.P. R.T.E. 1595	SECTION 10-00026-00-RS	COUNTY COOK	TOTAL SHEETS 21	SHEET NO. 17
TC-22			CONTRACT NO. 63692	
FED. ROAD DIST. NO. 1 ILLINOIS FED. AID PROJECT				



PROJECT: I-55/100/103-CLAREBOULEVARD; (065-SURVEY) DRAWING: (065) CLAREBOULEVARD - CLAREBOULEVARD - CLAREBOULEVARD - CLAREBOULEVARD  
 DATE: 5/1/2012 1:10 PM BY: 566749  
 CHECKED: LDH  
 DATE: 04-20-12  
 DRAWN: UKB  
 DATE: 04-20-12  
 DESIGNED: REW  
 DATE: 04-20-12



DESIGNED --	REW	REVISED --	
DRAWN --	UKB	REVISED --	
CHECKED --	LDH	REVISED --	
DATE --	04-20-12	REVISED --	

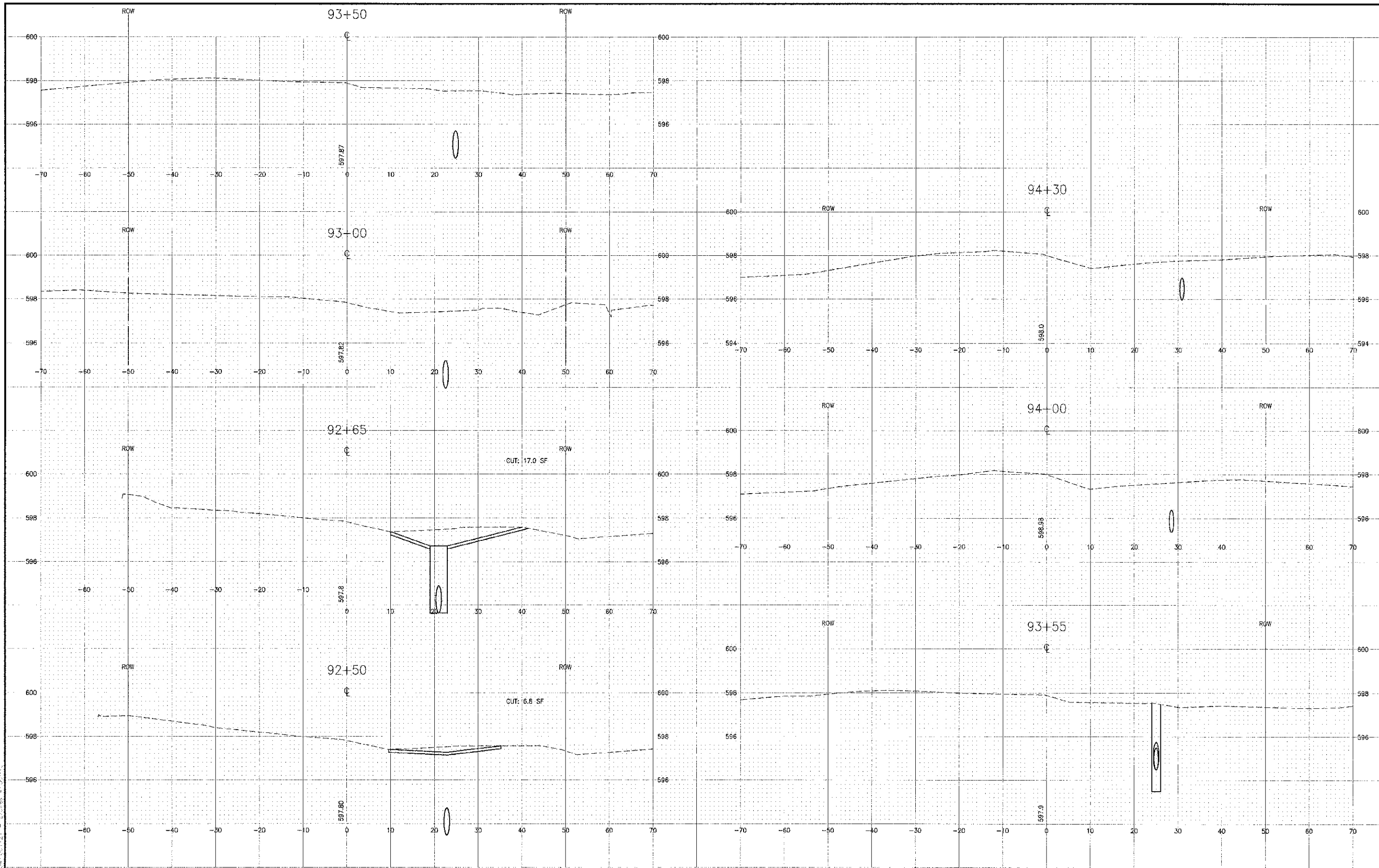
**STATE OF ILLINOIS  
DEPARTMENT OF TRANSPORTATION**

**CROSS SECTIONS  
CLAIRE BOULEVARD**

SCALE: HORIZ. 1"=20' / VERT. 1"=5' | PROJECT NO.: 100493 | STA. 89+00 TO STA. 92+00

F.A.U. RITE.	SECTION	COUNTY	TOTAL SHEETS	SHEET NO.
1596	10-00026-00-RS	COOK	21	19
CONTRACT NO.: 63692				

I:\PROJECTS\FAIRVIEW\COOPER CLAREBUCCY\003 CURVE\DRAWING\DWG\100493\_CROSS\_SECTION\100493\_CROSS\_SECTION.dwg  
 PLOT: 5/1/2012 11:11 AM BY: 501-AS  
 Copyright © 2012, by Baker & Associates, Inc.  
 Scale: 1"=20' - Horizontal, 1"=5' - Vertical  
 Drawing No. 104-00112 - Edition 4, 2012



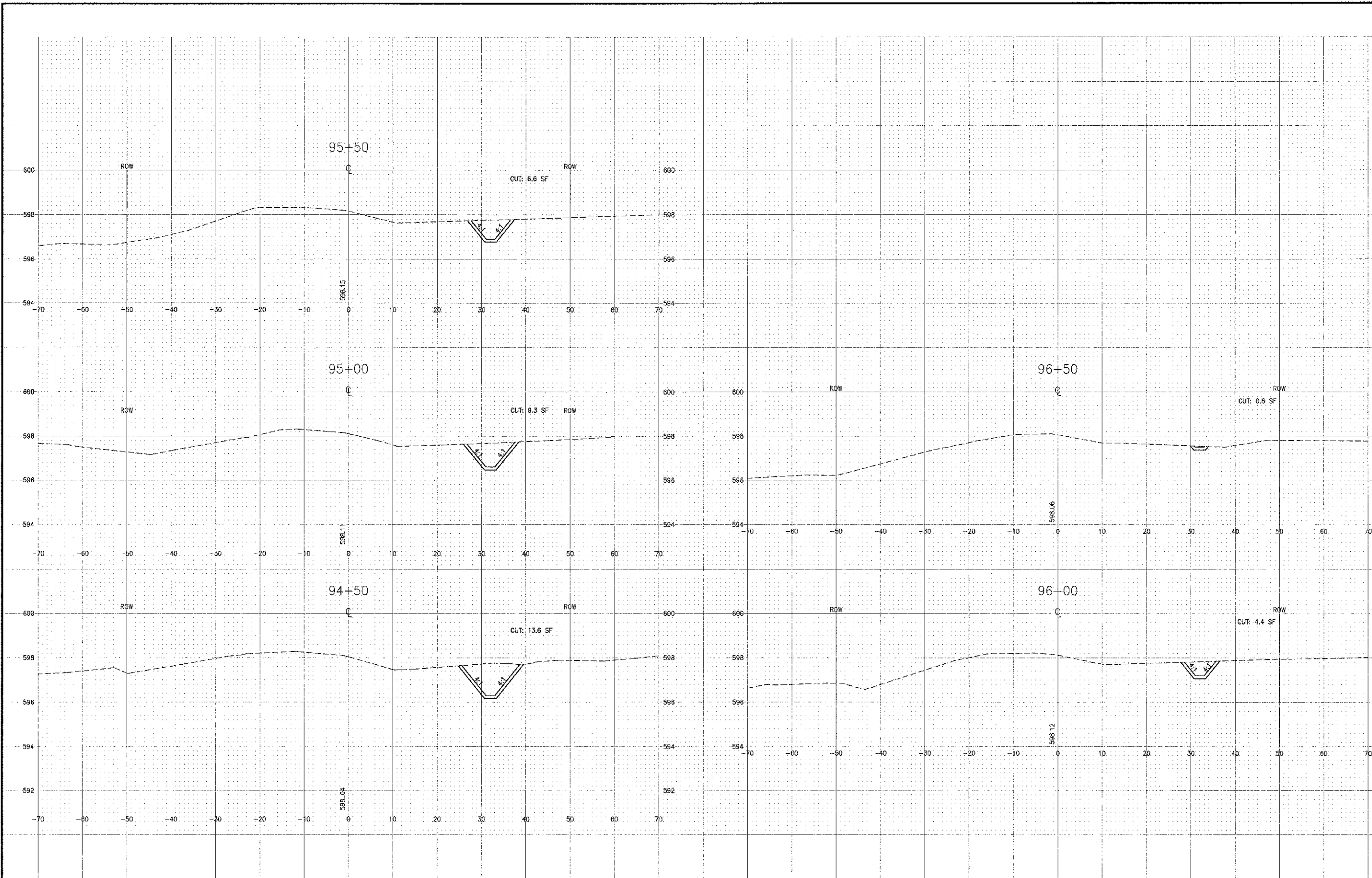
DESIGNED - REW	REVISIONS -
DRAWN - UKB	REVISIONS -
CHECKED - LDH	REVISIONS -
DATE - 04-20-12	REVISIONS -

**STATE OF ILLINOIS  
DEPARTMENT OF TRANSPORTATION**

**CROSS SECTIONS  
CLAIRE BOULEVARD**

SCALE: HORIZ. 1"=20' / VERT. 1"=5' | PROJECT NO: 100493 | STA. 92+50 TO STA. 94+30

F.A.U. RITE. 1596	SECTION 10-00026-00-RS	COUNTY COOK	TOTAL SHEETS 21	SHEET NO. 20
FED. ROAD DIST. NO. 1 ILLINOIS			CONTRACT NO.: 63692	



15961017 0001 15961017 0001  
 15961017 0001 15961017 0001  
 15961017 0001 15961017 0001  
 15961017 0001 15961017 0001  
 15961017 0001 15961017 0001  
 15961017 0001 15961017 0001  
 15961017 0001 15961017 0001  
 15961017 0001 15961017 0001  
 15961017 0001 15961017 0001  
 15961017 0001 15961017 0001

	DESIGNED - RW	REVISED -
	DRAWN - UKB	REVISED -
	CHECKED - J. D. H.	REVISED -
	DATE - 04-20-12	REVISED -

**STATE OF ILLINOIS  
DEPARTMENT OF TRANSPORTATION**

**CROSS SECTIONS  
CLAIRE BOULEVARD**

SCALE: HORIZ. 1"=20' / VERT. 1"=5' PROJECT NO: 100493 STA. 94+50 TO STA. 96+50

F.A.U. RTE.	SECTION	COUNTY	TOTAL SHEETS	SHEET NO.
1596	10-00026-00-RS	COOK	21	21
FED. ROAD DIST. NO. 1 ILLINOIS			CONTRACT NO.: 63692	