

**INDEX OF SHEETS**

- SHEET NO. 08-03-12 LETTING ITEM 001
- COVER SHEET
  - LEGEND, GENERAL NOTES AND SUMMARY OF QUANTITIES
  - SUMMARY OF QUANTITIES
  - ALIGNMENT, TIES & BENCHMARKS
  - C001: STA 0+07 TO 10+00
  - C002: STA 10+00 TO 15+50 & 54+50 TO 59+50
  - C003: STA 59+50 TO 70+00
  - C004: STA 70+00 TO 77+88
  - C005: STA 83+07 TO 84+86 & 86+50 TO 92+00
  - C006: STA 92+00 TO 94+72
  - D001
  - BD-01: DRIVEWAY DETAILS - DISTANCE BETWEEN R.O.W. AND FACE OF CURB & EDGE OF SHOULDER >= 15' (4.5 M)
  - BD-02: DRIVEWAY DETAILS - DISTANCE BETWEEN ROW AND FACE OF CURB < 15' (4.5 M)
  - BD-24: CURB OR CURB AND GUTTER REMOVAL AND REPLACEMENT
  - TC-10: TRAFFIC CONTROL AND PROTECTION FOR SIDE ROADS, INTERSECTIONS, AND DRIVEWAYS
  - TC-13: DISTRICT ONE TYPICAL PAVEMENT MARKINGS
  - TC-22: ARTERIAL ROAD INFORMATION SIGN

**STATE STANDARDS**

- 000001-06 STANDARD SYMBOL, ABBREVIATIONS AND PATTERNS
- 424001-06 CURB RAMPS FOR SIDEWALKS
- 701106-02 OFF-ROAD OPERATIONS, MULTILANE, MORE THAN 15' (4.5m) AWAY
- 701426-04 LANE CLOSURE, MULTILANE, INTERMITTENT OR MOVING OPER., FOR SPEEDS ≥ 45 MPH
- 701801-07 URBAN LANE CLOSURE, MULTILANE, 1W OR 2W WITH NONTRAVERSABLE MEDIAN
- 701802-05 URBAN LANE CLOSURE, MULTILANE, 2W WITH BIDIRECTIONAL LEFT TURN LANE
- 701701-08 URBAN LANE CLOSURE, MULTILANE INTERSECTION
- 701801-08 LANE CLOSURE, MULTILANE, 1W OR 2W CROSSWALK OR SIDEWALK CLOSURE
- 701901-02 TRAFFIC CONTROL DEVICES
- 876001-01 PEDESTRIAN PUSH BUTTON POST
- 880006-01 TRAFFIC SIGNAL MOUNTING DETAILS
- 424011 CURB PARALLEL CURB RAMPS FOR SIDEWALKS
- 424022 SIDEWALK/BIKEWAY PEDESTRIAN CROSSINGS

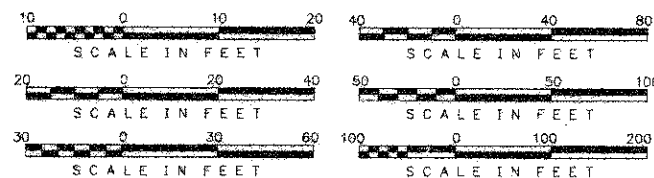
**DESIGN DESIGNATION - ARTERIAL**

**LENGTH OF PROJECT**

GROSS LENGTH = 9466 FT = 1.79 MILES  
NET LENGTH = 4000 FT = 0.76 MILES

**TRAFFIC DATA**

DUNDEE ROAD ADT = 35900  
SPEED LIMIT = 35 MPH



FULL SIZE PLANS HAVE BEEN PREPARED USING STANDARD ENGINEERING SCALES. REDUCED SIZED PLANS WILL NOT CONFORM TO STANDARD SCALES. IN MAKING MEASUREMENT ON REDUCED PLANS, THE ABOVE SCALES MAY BE USED.

**WARNING**



CALL  
**J.U.L.I.E.**  
BEFORE YOU DIG  
**1-800-892-0123**

**CONTRACT NO.: 63614**

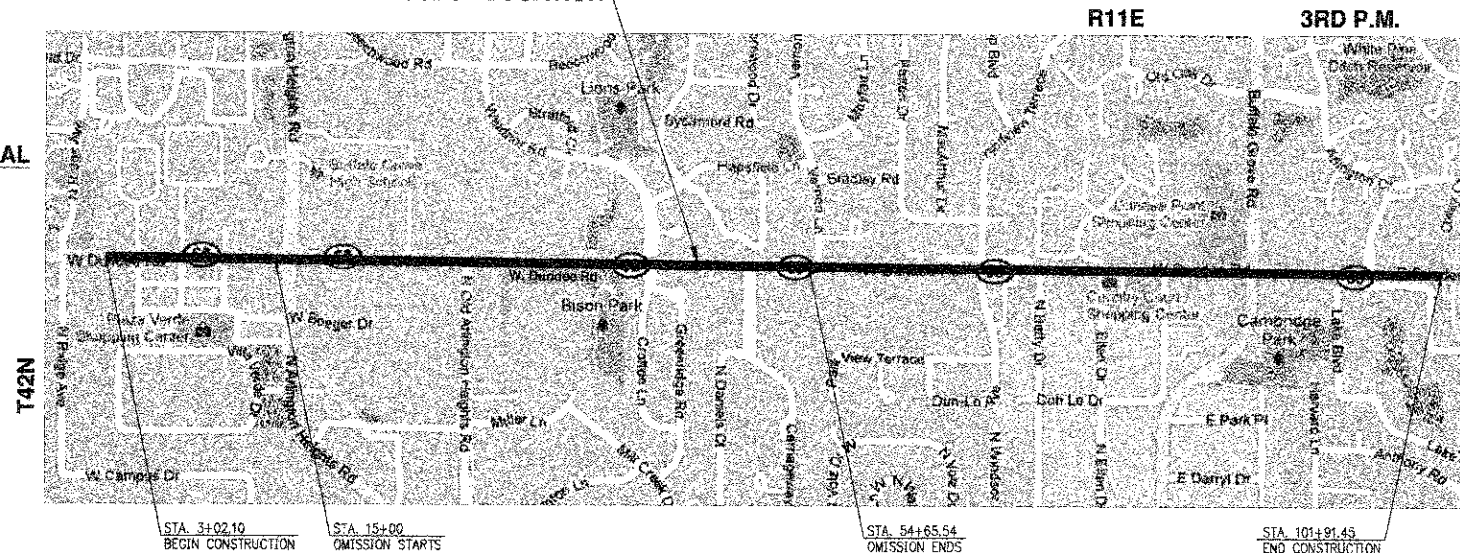
**CONTACT**

VILLAGE OF BUFFALO GROVE  
CONTACT: GREG BOYSEN  
OFFICE: 847-459-2547  
FAX: 847-537-5845

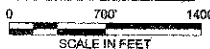
BURNS & MCDONNELL  
CONTACT: ANTHONY BRYANT  
OFFICE: 630-724-3200  
FAX: 630-724-3201

COOK COUNTY  
CONTACT: BHANU VIAS, P.E.  
OFFICE: 312-603-1670  
FAX: 312-603-9945

**PROJECT LOCATION**



**LOCATION MAP**



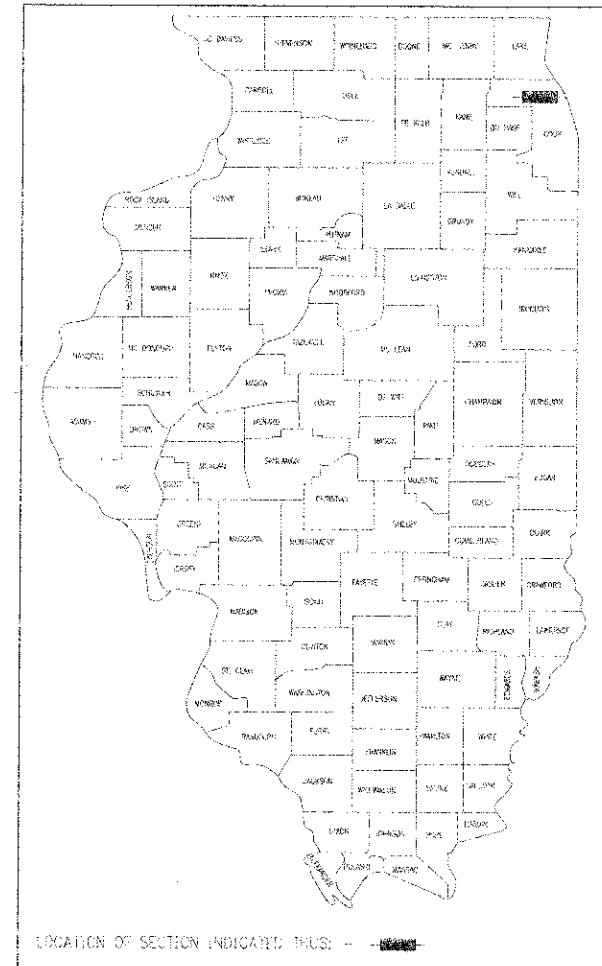
# STATE OF ILLINOIS DEPARTMENT OF TRANSPORTATION DIVISION OF HIGHWAYS PLANS FOR PROPOSED FEDERAL AID HIGHWAY

**FAP 343 (DUNDEE ROAD / ILLINOIS ROUTE 68)  
SECTION NO.: 08-00095-00-SW  
RIDGE ROAD TO HUNTINGTON LANE**

**MULTI-USE PATH IMPROVEMENT  
PROJECT NO.: CMM-9003 (263)  
JOB NO.: C-91-387-09**

**VILLAGE OF BUFFALO GROVE  
COOK COUNTY**

FAP	SECTION	COUNTY	TOTAL SHEETS	SHEET NO.
343	08-00095-00-SW	COOK	17	1
FEDERAL DIST. NO.		ILLINOIS FEDERAL AID PROJECT		
CONTRACT: 63614				



**STATE OF ILLINOIS  
DEPARTMENT OF TRANSPORTATION  
DIVISION OF HIGHWAYS**

Approved: *Gregory P. Boyen*

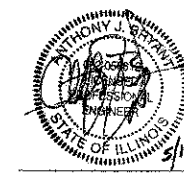
Village of Buffalo Grove, *P.W. Dirksen*

Passed: *MAY 22, 2012*

*C. Holtz*  
District 1 Engineer of Local Roads & Streets

Releasing for Bid Based on Limited Review

*May 24, 2012*  
*Dianna M. O'Keefe*  
Deputy of Highways, Region 1 Engineer



ANTHONY J. BRYANT, P.E.  
NO. 062-056612  
EXP. DATE: 11/30/2009

**PRINTED BY THE AUTHORITY  
OF THE STATE OF ILLINOIS**



IL DESIGN FIRM NO.  
154-003310

**SPECIFICATIONS, STANDARDS AND SPECIAL PROVISIONS**

ALL REFERENCES TO STANDARD SPECIFICATIONS IN THESE GENERAL NOTES SHALL BE INTERPRETED TO MEAN THE "STANDARD SPECIFICATIONS FOR ROAD AND BRIDGE CONSTRUCTION" ADOPTED BY THE ILLINOIS DEPARTMENT OF TRANSPORTATION, JANUARY 1, 2012 AND THE SUPPLEMENTAL SPECIFICATIONS AND RECURRING SPECIAL PROVISIONS," ADOPTED JANUARY 1, 2012.

ALL CONSTRUCTION SHALL BE IN ACCORDANCE WITH THE STANDARD SPECIFICATIONS; THE LATEST EDITION OF THE "MANUAL ON UNIFORM TRAFFIC CONTROL DEVICES FOR STREETS AND HIGHWAYS" (MUTCD); THE DETAILS IN THE PLANS AND THE SPECIAL PROVISIONS, IDOT STANDARD DRAWINGS, VILLAGE OF BUFFALO GROVE, VILLAGE OF ARLINGTON HEIGHTS, AND VILLAGE OF WHEELING.

ALL REFERENCE TO "ENGINEER" SHALL BE INTERPRETED AS THE RESIDENT ENGINEER.

**DISTRICT ONE DETAILS:**

- BD-01 DRIVEWAY DETAILS DISTANCE BETWEEN R.O.W. AND FACE OF CURB/EDGE OF SHOULDER  $\geq$  15'
- BD-02 DRIVEWAY DETAILS DISTANCE BETWEEN R.O.W. AND FACE OF CURB < 15' (4.5M)
- BD-24 CURB OR CURB AND GUTTER REMOVAL AND REPLACEMENT
- BD-32 BUTT JOINT AND HMA TAPER DETAILS
- TC-10 TRAFFIC CONTROL AND PROTECTION FOR SIDE ROADS, INTERSECTIONS, AND DRIVEWAYS
- TC-13 DISTRICT ONE TYPICAL PAVEMENT MARKINGS
- TC-22: ARTERIAL ROAD INFORMATION SIGN

EARTHWORK SCHEDULE		
LOCATION	REMOVAL AND DISPOSAL OF UNSUITABLE MATERIAL (CU. YD.)	TOPSOIL FURNISH AND PLACE, 4" (SQ. YD.)
C001 STA. 00+07 TO STA. 10+00	457	3590
C002 STA. 10+00 TO STA. 59+50	145	167
C003 STA. 59+50 TO STA. 70+00	306	332
C004 STA. 70+00 TO STA. 77+88	227	336
C005 STA. 83+07 TO STA. 92+00	106	350
C006 STA. 92+00 TO STA. 94+72	132	728
TOTAL	1373	5503

HOT-MIX ASPHALT MIXTURE REQUIREMENTS	
MIXTURE TYPE	AIR VOIDS @ 140es
DRIVEWAYS	
HMA SURFACE COURSE, MIX D, N 50 (IL 9.5 mm); 2"	4% @ 50 GYR
HMA BASE COURSE (HMA BINDER IL-19 mm);	
PE - 6" (3 LIFTS), CE - 8" (4 LIFTS)	4% @ 50 GYR

THE UNIT WEIGHT USED TO CALCULATE ALL HMA SURFACE MIXTURE QUANTITIES IS 112 LBS/SQ YD/IN.

THE "AC TYPE" FOR POLYMERIZED HMA MIXES SHALL BE SBS/SBR PG76-22" AND FOR NONPOLYMERIZED HMA THE "AC TYPE" SHALL BE "PG 64-22" UNLESS MODIFIED BY DISTRICT ONE.

FOR PERCENT OF RAP SEE DISTRICT ONE SPECIAL PROVISIONS.

**GENERAL NOTES**

1. THE CONTRACTOR SHALL NOTIFY J.U.L.E. (800-892-0123) AT LEAST 48 HOURS PRIOR TO CONSTRUCTION FOR LOCATIONS OF UTILITIES, AND SHALL BE RESPONSIBLE FOR THE PROTECTION OF THE SAME.
2. THE CONTRACTOR SHALL CONTACT IDOT TRAFFIC CONTROL SUPERVISOR AT (847) 705-4470 A MINIMUM OF 72 HOURS PRIOR TO BEGINNING ANY WORK IN STATE ROW.
3. THE CONTRACTOR SHALL NOTIFY BURNS & McDONNELL (THE ENGINEER), IDOT, THE VILLAGE OF BUFFALO GROVE & THE VILLAGE OF WHEELING AT LEAST 48 HOURS IN ADVANCE OF CONSTRUCTION. NO UNDERGROUND WORK SHALL BE COVERED UNTIL IT HAS BEEN INSPECTED. APPROVAL TO PROCEED MUST BE OBTAINED FROM THE ENGINEER PRIOR TO POURING ANY CONCRETE AFTER FORMS HAVE BEEN SET.
4. CONTRACTORS ARE CAUTIONED AGAINST INSTITUTING ANY CHANGES AND/OR SUBSTITUTIONS TO THE PROJECT REPRESENTED BY THESE DRAWINGS WITHOUT PRIOR WRITTEN APPROVAL BY THE ENGINEER. VISUAL CONTACT WITH THESE DRAWINGS SHALL CONSTITUTE CONCLUSIVE EVIDENCE OF ACCEPTANCE OF THESE RESTRICTIONS.
5. WRITTEN DIMENSIONS ON THESE DRAWINGS SHALL TAKE PRECEDENCE OVER SCALED DIMENSIONS. CONTRACTORS SHALL VERIFY AND BE RESPONSIBLE FOR ALL ELEVATIONS, DIMENSIONS, AND CONDITIONS ON THE JOB. THE ENGINEER SHALL BE NOTIFIED AS SOON AS POSSIBLE OF ANY VARIATIONS FROM THE DIMENSIONS AND CONDITIONS SHOWN ON THESE DRAWINGS.
6. THE CONTRACTOR SHALL BE RESPONSIBLE FOR THE PROTECTION OF ALL PUBLIC AND PRIVATE UTILITIES, EVEN THOUGH THEY MAY NOT BE SHOWN ON THE DRAWINGS. ANY UTILITY DAMAGES DURING CONSTRUCTION SHALL BE REPAIRED OR REPLACED TO THE SATISFACTION OF THE OWNER AT THE CONTRACTOR'S EXPENSE.
7. THE CONTRACTOR SHALL BE RESPONSIBLE FOR REMOVING IMMEDIATELY ANY MUD, DIRT, OR DEBRIS DEPOSITED ON ROADWAYS FROM ANY VEHICLES EXITING OR ENTERING THE SITE.
8. THE CONTRACTOR IS ESPECIALLY ALERTED TO THE FACT THAT IT IS HIS RESPONSIBILITY TO GUARD AND PROTECT NEWLY POURED CONCRETE AGAINST ANY FOREIGN MARKINGS, GRAFFITI OR OTHER DAMAGE, AND AT HIS EXPENSE, REPLACE ANY SIDEWALK NOT ACCEPTABLE TO THE ENGINEER.
9. TRAFFIC CONTROL SHALL CONFORM TO IDOT'S HIGHWAY STANDARDS AND THE "MANUAL ON UNIFORM TRAFFIC CONTROL DEVICES FOR STREETS AND HIGHWAYS" AT ALL TIMES DURING CONSTRUCTION. TRAFFIC CONTROL SHALL INCLUDE ADVANCE WARNING LANE CLOSURE SIGNAGE, AN ARROW BOARD AND TYPE II BARRICADES OR DRUMS.
10. THE CONTRACTOR SHALL COORDINATE CONSTRUCTION ACTIVITIES WITH UTILITY COMPANIES AND THE VILLAGE OF BUFFALO GROVE.
11. ANY SIGNAGE AFFECTED DURING CONSTRUCTION SHALL BE REPLACED TO ITS ORIGINAL CONDITION (OR REPLACED) AND LOCATION (OR AS CLOSE AS REASONABLE).
12. THE RESIDENT ENGINEER SHALL CONTACT WALTER CZARNY, IDOT AREA TRAFFIC FIELD ENGINEER, AT 847-715-8419 A MINIMUM OF 2 WEEKS PRIOR TO PLACING PERMANENT PAVEMENT MARKINGS.

**TREE SCHEDULE**

Tree Removal		Proposed Tree	
Station	Offset	Station	Offset
4+90.88	39.79 LT	56+25.86	34.92 LT
6+65.98	40.84 LT	56+75.98	35.86 LT
8+35.03	40.23 LT	57+25.25	35.73 LT
11+60.63	46.75 LT	58+77.20	34.95 LT
12+33.48	47.37 LT	71+48.59	42.85 LT
12+73.17	47.49 LT	71+83.46	43.22 LT
13+12.93	46.61 LT	72+25.86	43.45 LT
64+80.56	39.77 LT	72+61.86	43.14 LT
68+31.74	42.67 LT	72+93.91	42.96 LT
68+69.72	42.00 LT	73+28.78	42.89 LT
69+00.94	42.43 LT	73+63.70	42.86 LT
69+42.06	42.20 LT	73+98.02	42.74 LT
69+79.89	42.52 LT	74+46.53	43.52 LT
70+24.43	44.34 LT	74+80.10	43.62 LT
70+74.74	47.76 LT	75+27.32	44.06 LT
71+19.22	50.16 LT	77+61.87	48.22 LT
74+50.66	55.25 LT	84+66.29	48.03 LT

PROJECT NO.	
DATE	
BY	
CHECKED	
DATE	
BY	
NO.	

PROJECT NO.	
DATE	
BY	
CHECKED	
DATE	
BY	
NO.	

SUMMARY OF QUANTITIES

SP	CODE NO.	ITEM	UNIT	TOTAL QUANTITY	CONSTRUCTION CODE CMAQ	
					100% VILLAGE STREETScape	80% FED 20% VILLAGE ROADWAY
					0031 URBAN	0041 URBAN
	20100110	TREE REMOVAL (6 TO 15 UNITS DIAMETER)	UNIT	235		235
	20100210	TREE REMOVAL (OVER 15 UNITS DIAMETER)	UNIT	50		50
	20101000	TEMPORARY FENCE	FOOT	175		175
A	20101200	TREE ROOT PRUNING	EACH	6		6
A	20101400	NITROGEN FERTILIZER NUTRIENT	POUND	53		53
A	20101500	PHOSPHORUS FERTILIZER NUTRIENT	POUND	53		53
A	20101600	POTASSIUM FERTILIZER NUTRIENT	POUND	53		53
	20201200	REMOVAL AND DISPOSAL OF UNSUITABLE MATERIAL	CU YD	1363		1363
A	21101615	TOPSOL FURNISH AND PLACE, 4"	SQ YD	5024		5024
A	25200110	SODDING, SALT TOLERANT	SQ YD	5024		5024
A	25200200	SUPPLEMENTAL WATERING	UNIT	38		38
	28000610	INLET FILTERS	EACH	27		27
	35101500	AGGREGATE BASE COURSE, TYPE B	CU YD	683		683
	35501300	HOT-MIX ASPHALT BASE COURSE, 6"	SQ YD	3		3
	35501310	HOT-MIX ASPHALT BASE COURSE, 8"	SQ YD	21		21
	40201000	AGGREGATE FOR TEMPORARY ACCESS	TON	24		24
	40603335	HOT-MIX ASPHALT SURFACE COURSE, MDX'D, N50	TON	2		2
	42300400	PORTLAND CEMENT CONCRETE DRIVEWAY PAVEMENT, 8 INCH	SQ YD	769		769
	42400200	PORTLAND CEMENT CONCRETE SIDEWALK 5 INCH	SQ FT	31254		31254
	42400400	PORTLAND CEMENT CONCRETE SIDEWALK 7 INCH	SQ FT	5543		5543
	42400800	DETECTABLE WARNINGS	SQ FT	834		834
	44000200	DRIVEWAY PAVEMENT REMOVAL	SQ YD	1410		1410
	44000800	COMBINATION CONCRETE CURB AND GUTTER REMOVAL	FOOT	851		851
	44000900	SEWELK REMOVAL	SQ FT	17992		17992
	50255500	MANHOLES TO BE ADJUSTED	EACH	5		5
	60603600	COMBINATION CONCRETE CURB & GUTTER, TYPE B-6 12	FOOT	793		793
	63200310	GUARDRAIL REMOVAL	FOOT	14		14
	63700175	CONCRETE BARRIER, SINGLE FACE, 42-INCH HEIGHT	FOOT	290		290
	67100100	MOBILIZATION	L SUM	1		1
	70102830	TRAFFIC CONTROL AND PROTECTION, STANDARD 701801	L SUM	1		1
	70102832	TRAFFIC CONTROL AND PROTECTION, STANDARD 701802	L SUM	1		1
	70102835	TRAFFIC CONTROL AND PROTECTION, STANDARD 701701	L SUM	1		1
	70102840	TRAFFIC CONTROL AND PROTECTION, STANDARD 701801	L SUM	1		1
A	78000100	THERMOPLASTIC PAVEMENT MARKING - LETTERS AND SYMBOLS	SQ FT	22		22

SP	CODE NO.	ITEM	UNIT	TOTAL QUANTITY	CONSTRUCTION CODE CMAQ	
					100% VILLAGE STREETScape	80% FED 20% VILLAGE ROADWAY
					0031 URBAN	0041 URBAN
A	78000400	THERMOPLASTIC PAVEMENT MARKING - LINE 6"	FOOT	534		534
A	78000800	THERMOPLASTIC PAVEMENT MARKING - LINE 24"	FOOT	16		16
A	B2003116	TREE, MALUS CORALBURST, (CORALBURST CRABAPPLE), 2" CALIPER, TREE FORM, BALLED AND BURLAPPED	EACH	18		18
A	C2C00818	SHRUB, SPIREA X BUMALDA GOLDFLAME (GOLD FLAME BUMALDA SPIREA), 16" HEIGHT CONTAINER	EACH	5		5
A	C2C12824	SHRUB VIBURNUM TRILOBUM BAILEY COMPACT (BAILEY COMPACT AMERICAN CRANBERRY VIBURNUM), 2" HEIGHT, CONTAINER	EACH	10		10
A	C2C15761	SHRUB, SPIREA JAPONICA NEON FLASH (NEON FLASH JAPANESE SPIREA), 18" HEIGHT, 5 GALLON CONTAINER	EACH	11		11
A	K0012900	PERENNIAL PLANTS, ORNAMENTAL TYPE, GALLON POT	UNIT	24		24
	X0026850	SHRUB REMOVAL	EACH	57	57	
A	X0324915	RELOCATE LIGHTING UNITS AND POLES	EACH	2	2	
A	XX000909	TRASH RECEPTACLES	EACH	4	4	
A	XX002133	RELOCATE SIGN AND BASE	EACH	2		2
	XX000429	SIDEWALK, SPECIAL	SQ FT	126		126
	XX006898	STAMPED COLORED PORTLAND CEMENT CONCRETE	SQ FT	495	495	
A	Z0003850	BENCHES	EACH	4	4	
	Z0013798	CONSTRUCTION LAYOUT	L SUM	1		1
	Z0030850	TEMPORARY INFORMATION SIGNING	SQ FT	27		27
	Z0062000	SAW CUTTING	FOOT	1598		1598
	Z0078600	TRAINERS	HOOR	500		500

Construction Type Code 0042  
A SPECIALTY ITEMS

PLAN REVISIONS  
DATE BOOK  
BY  
DATE BOOK  
BY  
DATE BOOK  
BY

PROF. L.C. REVISIONS  
DATE BOOK  
BY  
DATE BOOK  
BY  
DATE BOOK  
BY

STATE OF ILLINOIS  
DEPARTMENT OF TRANSPORTATION

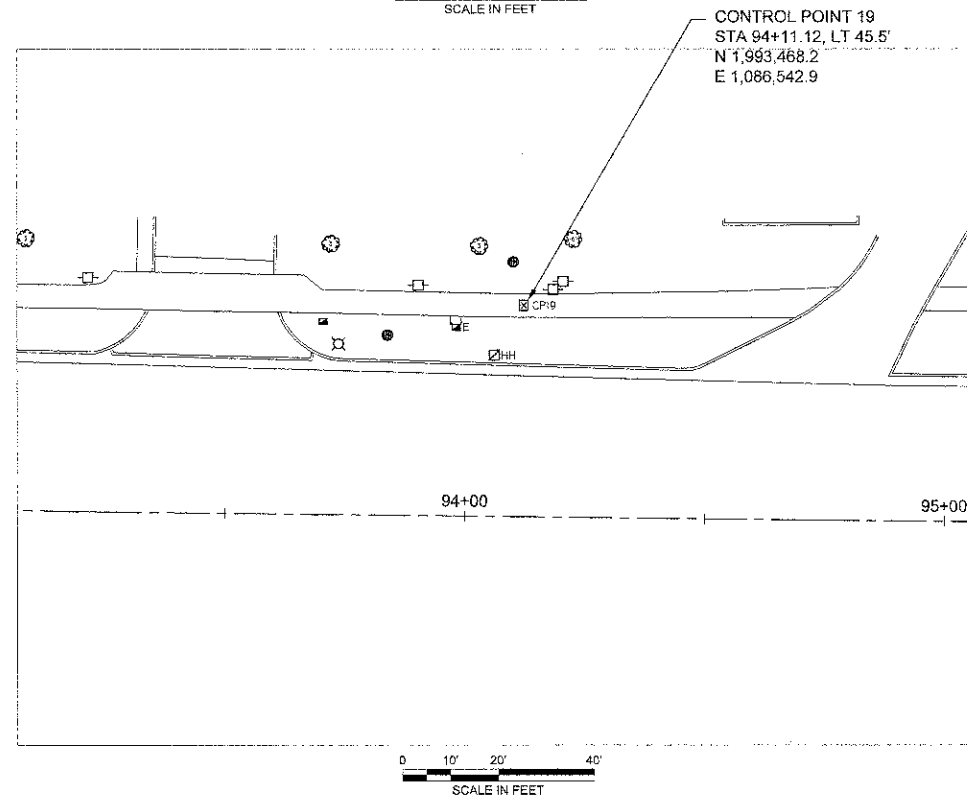
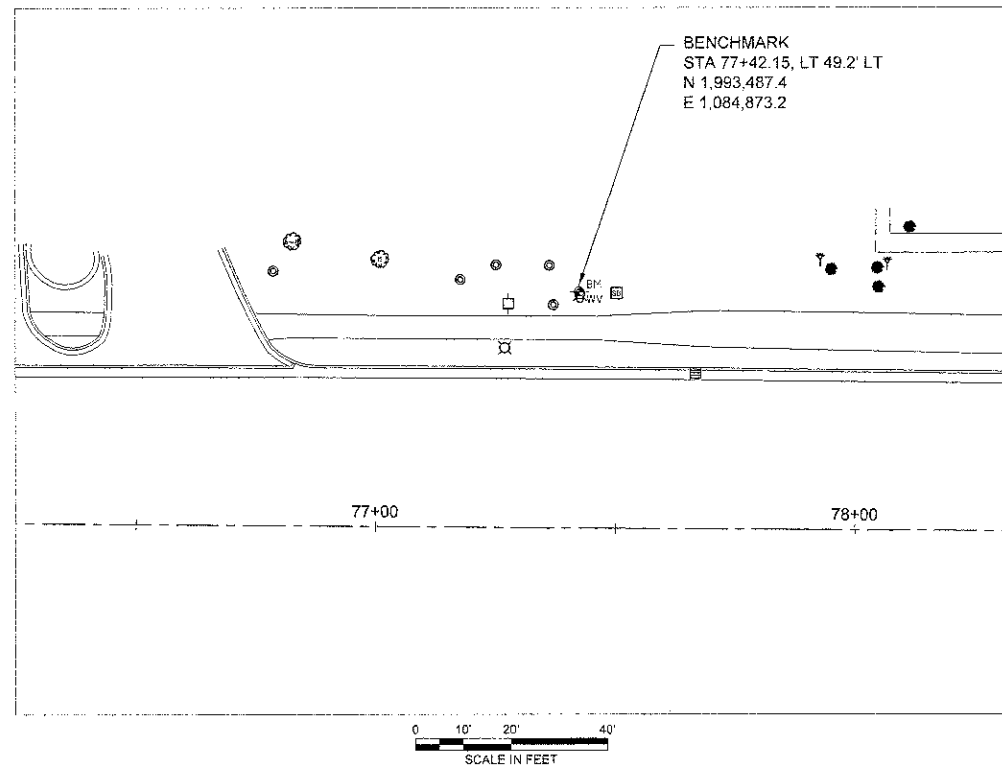
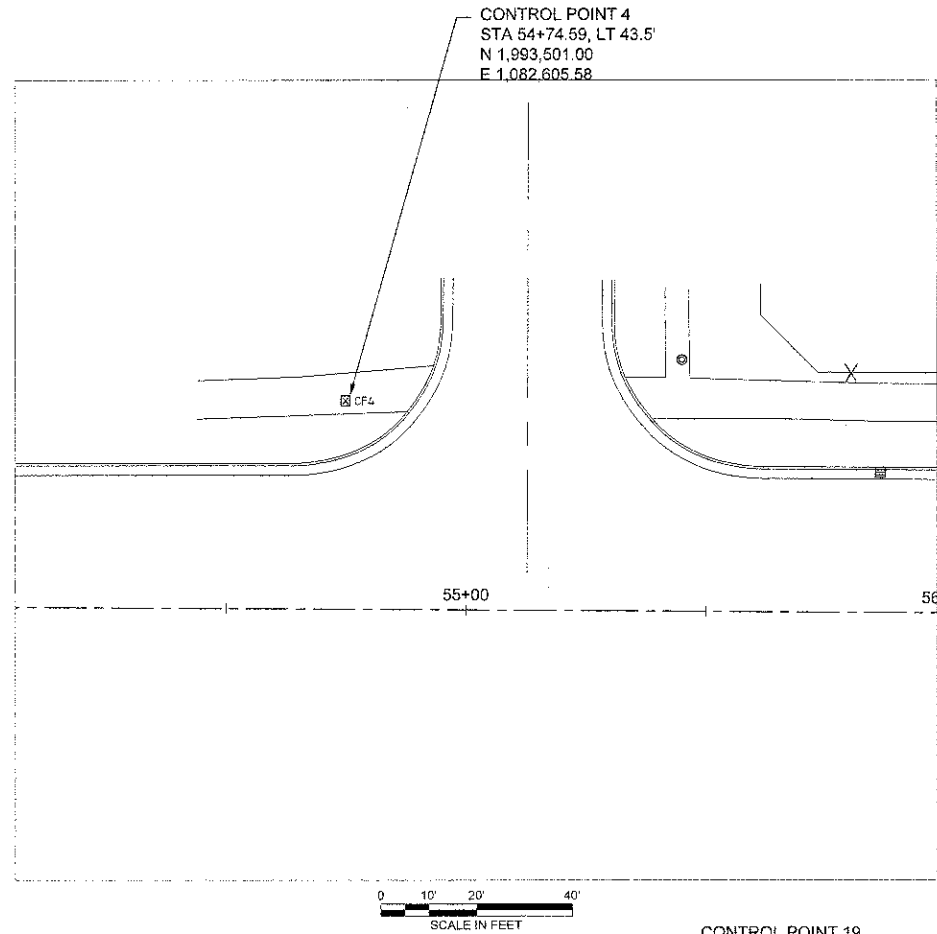
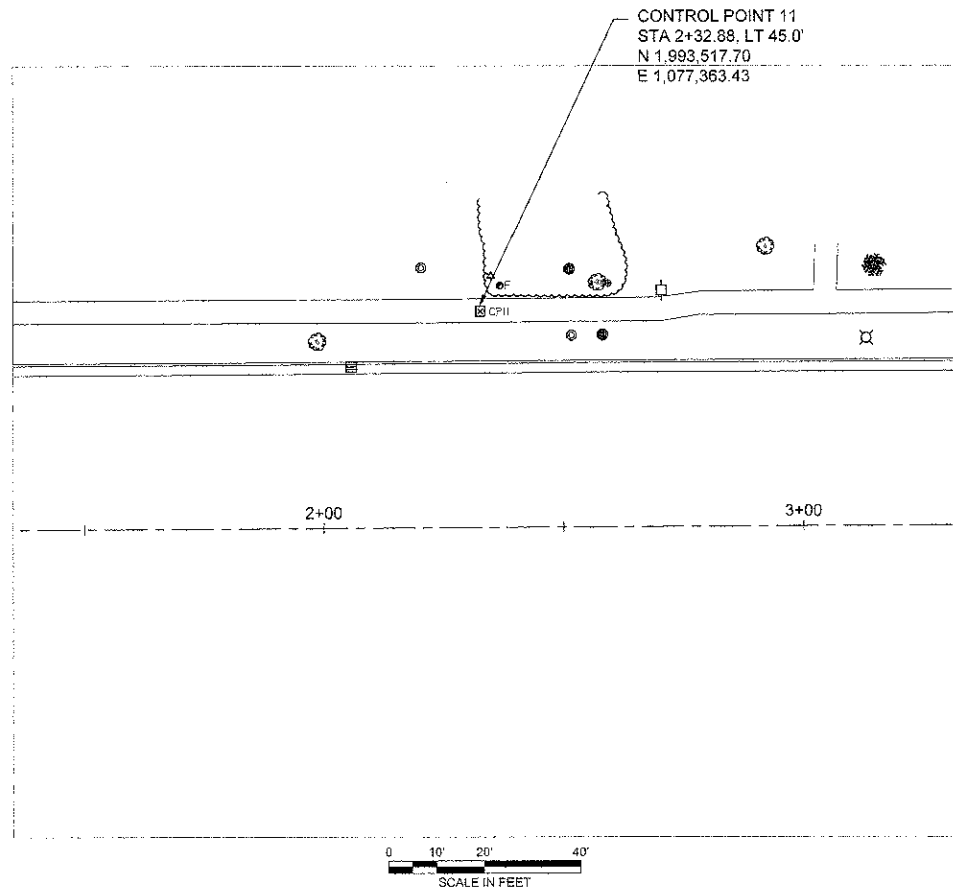
F.A.U. RITE 343  
SECTION 08-00095-00-SW  
COUNTY COOK  
TOTAL SHEETS 17  
SHEET NO. 3  
CONTRACT NO. 63614  
FED. ROAD DIST. NO. 1 ILLINOIS/FED. AID PROJECT

DESIGNED BY TMC  
DRAWN BY TMC  
CHECKED BY AJB  
DATE 8-16-2010  
REVISIONS  
REVISED BY  
REVISED BY  
REVISED BY

FILE NAME  
PROJECT NO.  
DATE

PLAN	SURVEYED	DATE
BY	BY	BY
SCALE FOR	SCALE FOR	SCALE FOR
NO.	NO.	NO.

PROF. FILE	REVISIONS	DATE
BY	BY	BY
SCALE FOR	SCALE FOR	SCALE FOR
NO.	NO.	NO.



FILE NAME :	USER NAME :	DESIGNED -- TMC	REVISED --
		DRAWN -- TMC	REVISED --
		CHECKED -- AJB	REVISED --
		DATE -- 8-16-2010	REVISED --

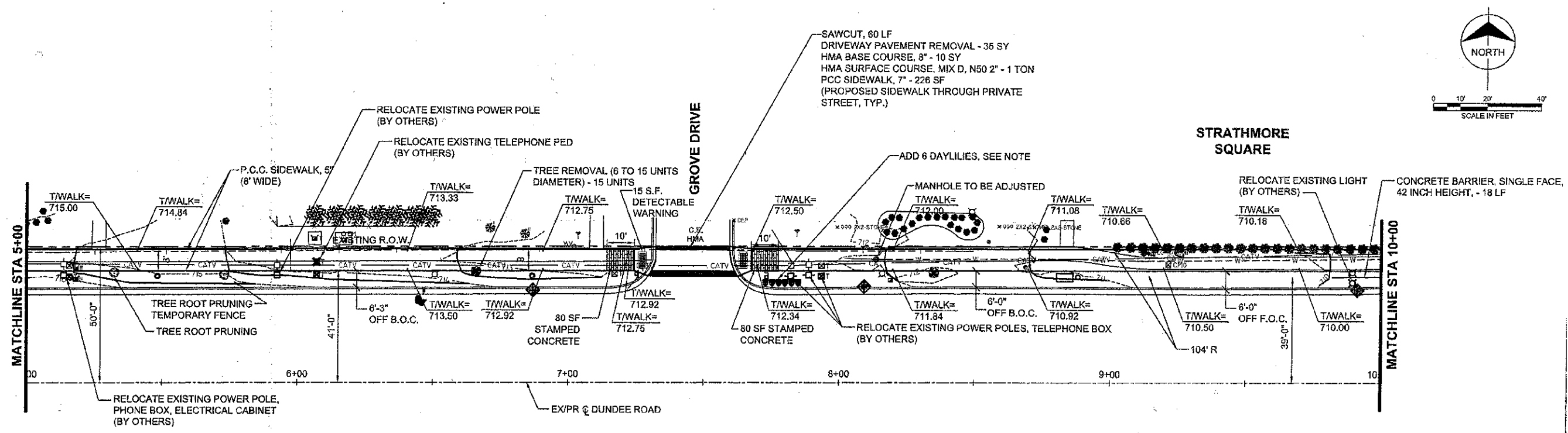
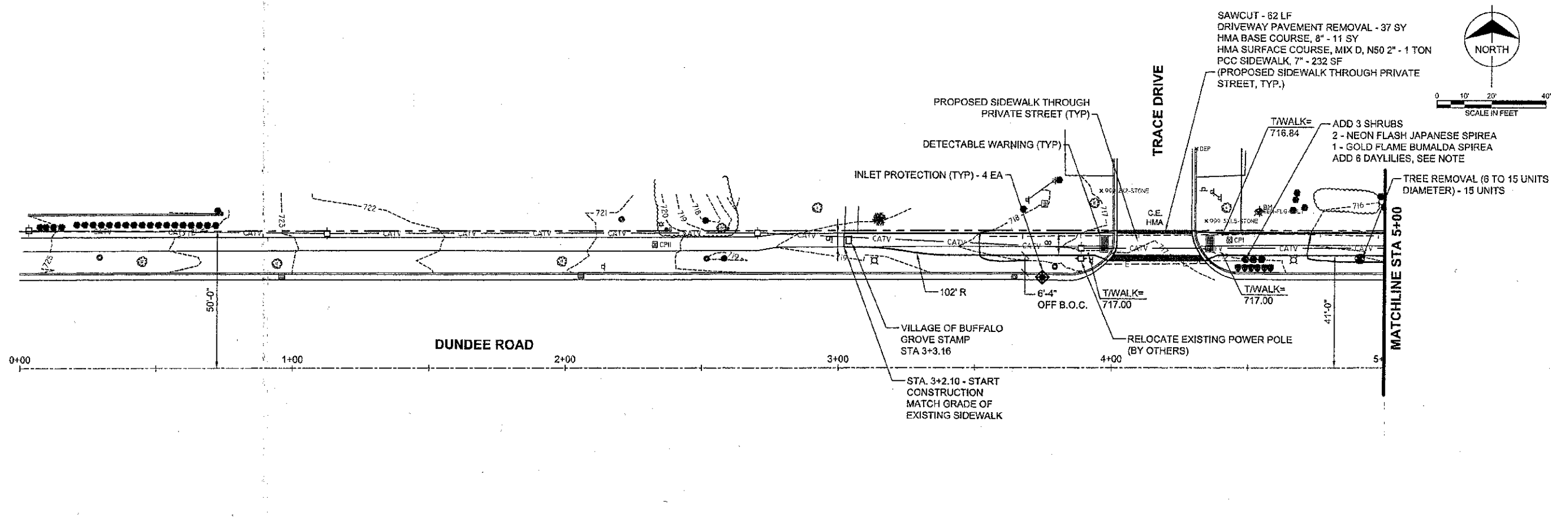
**STATE OF ILLINOIS  
DEPARTMENT OF TRANSPORTATION**

SCALE:

FILE NO.	SECTION	COUNTY	TOTAL SHEETS	SHEET NO.
343	08-00095-00-SW	COOK	17	4
CONTRACT NO. 63614				
FED. ROAD DIST. NO. 1 ILLINOIS FED. AID PROJECT				

PLAN	SURVEYED	BY	DATE
	NOTE BOOK		
	ALIGNED		
	RT. OF WAY CHECKED		
	CADD FILE NAME		
	NO.		

PROFILE	DESIGNED	BY	DATE
	NOTED		
	STRUCTURE		
	INDICATING		
	NO.		

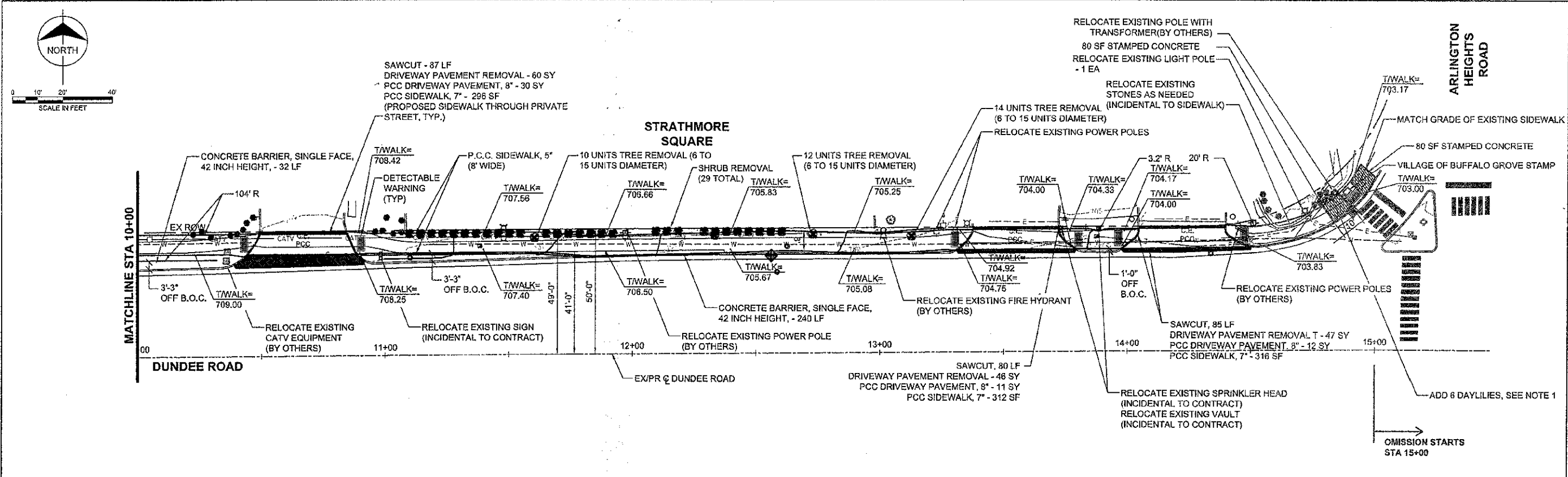


**NOTES:**  
 UTILIZE EQUAL QUANTITIES OF THE FOLLOWING FOR DAY LILIES:  
 HEMEROCALLIS HAPPY RETURNS (HAPPY RETURNS DAYLILY), 1-GALLON CONTAINER  
 HEMEROCALLIS CHICAGO APACHE (CHICAGO APACHE DAYLILY), 1 GALLON CONTAINER  
 HEMEROCALLIS ROSY RETURNS (ROSY RETURNS DAYLILY), 1-GALLON CONTAINER

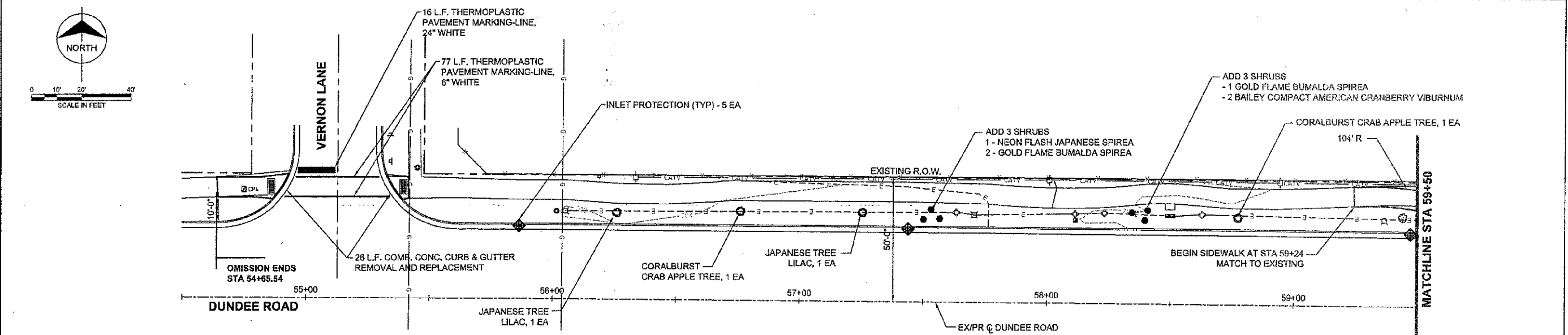
**QUANTITIES**  
 25 LF TEMPORARY FENCE  
 60 SF DETECTABLE WARNING  
 3085 SF SIDEWALK REMOVAL  
 4937 SF PCC SIDEWALK, 5"  
 458 SF PCC SIDEWALK, 7"  
 2 TON HMA SURFACE COURSE, MIX "D", N 50

FILE NAME = I:\Buffalo Grove\54363 - Dundee Road Streetscape and Misc. Grant Application\CADD\CIVIL\54363C001	USER NAME = D. CHAVEZ	DESIGNED -- TMC	REVISIONS	<b>STATE OF ILLINOIS DEPARTMENT OF TRANSPORTATION</b>	<b>PLAN SHEET C001 STA 0+00 TO 10+00</b>	F.A.U. RTE. 1273	SECTION 08-00095-00-SW	COUNTY COOK	TOTAL SHEETS 17	SHEET NO. 5			
	PLLOT SCALE = N/A	DRAWN -- TMC	REVISIONS			SCALE: 1" = 20'	SHEET NO. 1 OF 6 SHEETS	STA. 0+07	TO STA. 10+00	CONTRACT NO. 63614			
	PLLOT DATE = 10/26/2010	CHECKED -- AJB	REVISIONS			FED. ROAD DIST. NO. 1 ILLINOIS FED. AID PROJECT							
		DATE -- 8-16-2010	REVISIONS										

DATE	
BY	
REVISION	
NO.	
DATE	
BY	
REVISION	
NO.	
DATE	
BY	
REVISION	
NO.	



DATE	
BY	
REVISION	
NO.	
DATE	
BY	
REVISION	
NO.	
DATE	
BY	
REVISION	
NO.	

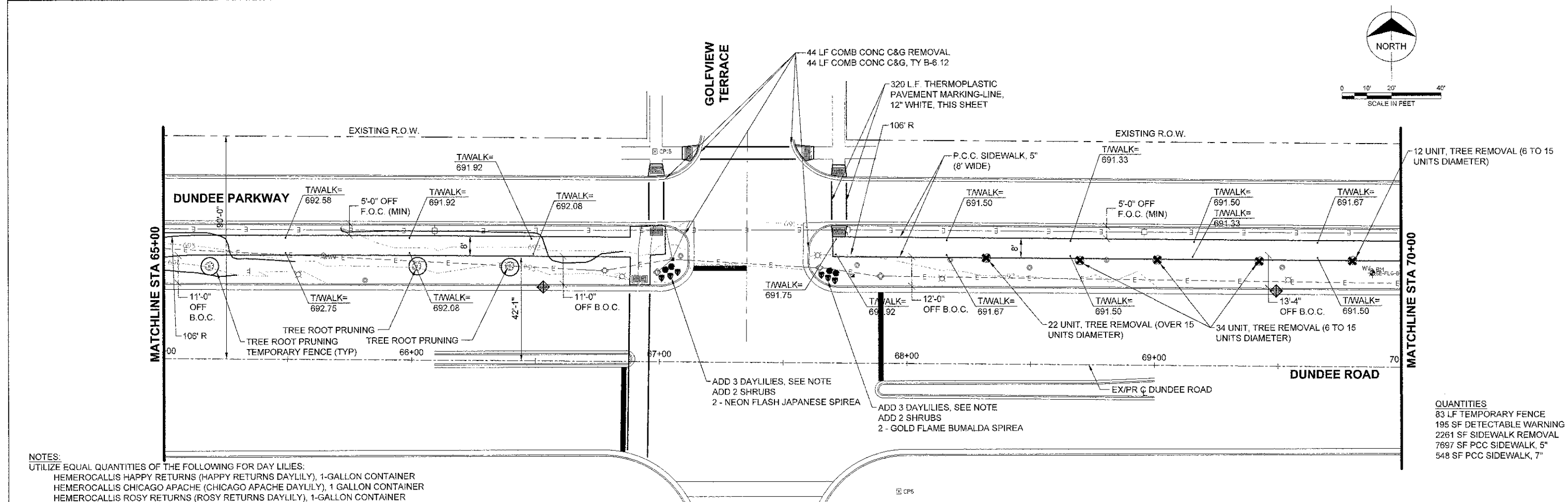
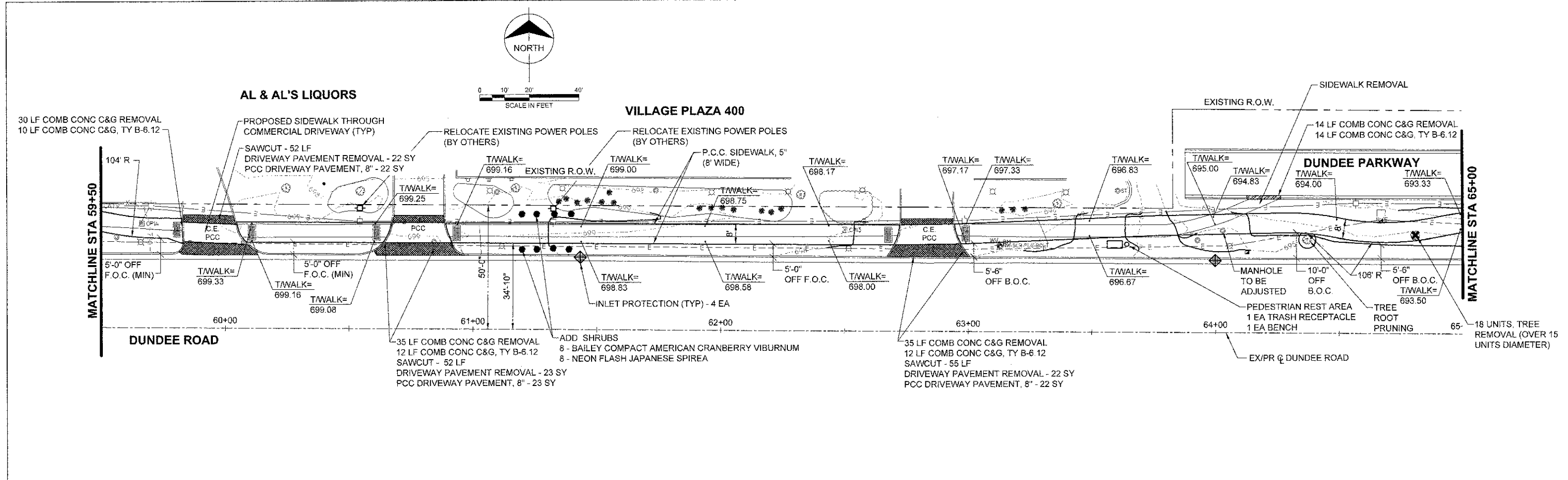


**NOTES:**  
 1. UTILIZE EQUAL QUANTITIES OF THE FOLLOWING FOR DAY LILIES:  
 HEMEROCALLIS HAPPY RETURNS (HAPPY RETURNS DAYLILY), 1-GALLON CONTAINER  
 HEMEROCALLIS CHICAGO APACHE (CHICAGO APACHE DAYLILY), 1 GALLON CONTAINER  
 HEMEROCALLIS ROSY RETURNS (ROSY RETURNS DAYLILY), 1-GALLON CONTAINER

**QUANTITIES**  
 135 SF DETECTABLE WARNING  
 2500 SF SIDEWALK REMOVAL  
 3456 SF PCC SIDEWALK, 5"  
 924 SF PCC SIDEWALK, 7"

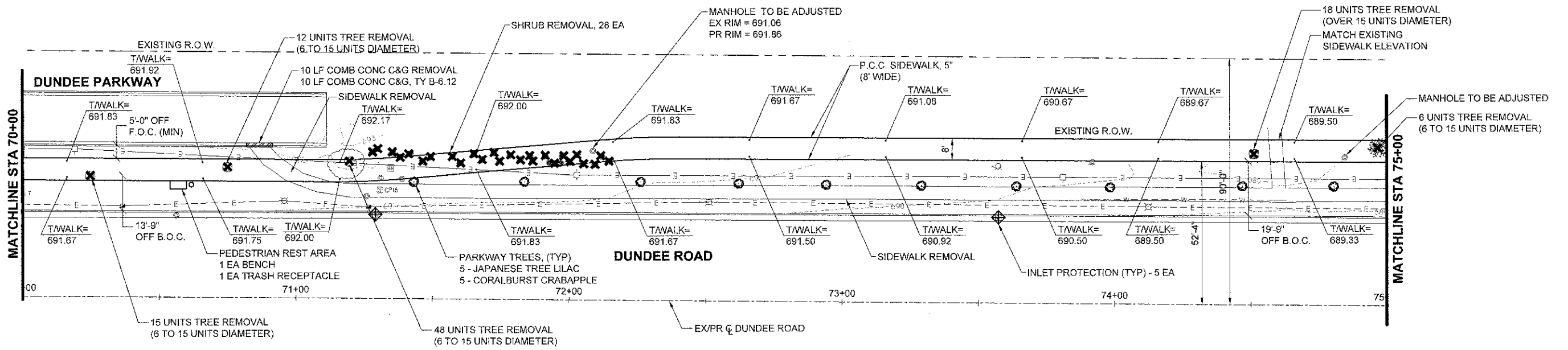
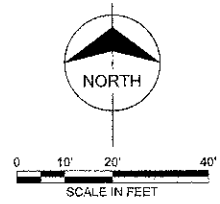
DATE	
BY	
PROJECT	
PLANNED	
DESIGNED	
CHECKED	
DRAWN	
NO. OF SHEETS	
SHEET NO.	
DATE	

DATE	
BY	
PROJECT	
PLANNED	
DESIGNED	
CHECKED	
DRAWN	
NO. OF SHEETS	
SHEET NO.	
DATE	

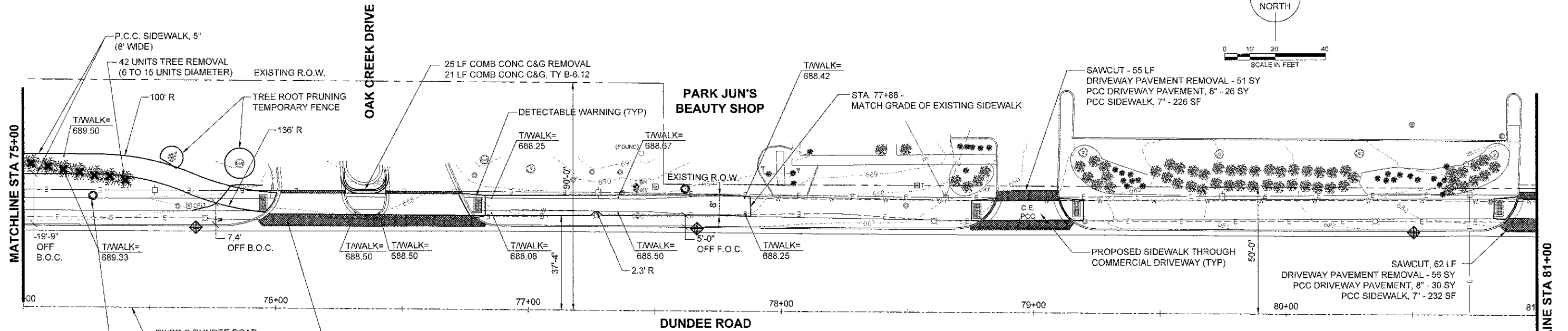
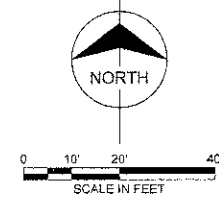


**NOTES:**  
 UTILIZE EQUAL QUANTITIES OF THE FOLLOWING FOR DAY LILIES:  
 HEMEROCALLIS HAPPY RETURNS (HAPPY RETURNS DAYLILY), 1-GALLON CONTAINER  
 HEMEROCALLIS CHICAGO APACHE (CHICAGO APACHE DAYLILY), 1 GALLON CONTAINER  
 HEMEROCALLIS ROSY RETURNS (ROSY RETURNS DAYLILY), 1-GALLON CONTAINER

**QUANTITIES**  
 83 LF TEMPORARY FENCE  
 195 SF DETECTABLE WARNING  
 2261 SF SIDEWALK REMOVAL  
 7697 SF PCC SIDEWALK, 5"  
 548 SF PCC SIDEWALK, 7"



PLAN	DATE
REVISED	
NO. OF SHEETS	
NO. OF SHEETS CHECKED	
NO. OF SHEETS	



PROF.	DATE
REVISED	
NO. OF SHEETS	
NO. OF SHEETS CHECKED	
NO. OF SHEETS	

**QUANTITIES**

67 LF TEMPORARY FENCE
105 SF DETECTABLE WARNING
3498 SF SIDEWALK REMOVAL
6049 SF PCC SIDEWALK, 5"
913 SF PCC SIDEWALK, 7"

**NOTES:**  
 UTILIZE EQUAL QUANTITIES OF THE FOLLOWING FOR DAY LILIES:  
 HEMEROCALLIS HAPPY RETURNS (HAPPY RETURNS DAYLILY), 1 - GALLON CONTAINER  
 HEMEROCALLIS CHICAGO APACHE (CHICAGO APACHE DAYLILY), 1 - GALLON CONTAINER  
 HEMEROCALLIS ROSY RETURNS (ROSY RETURNS DAYLILY), 1 - GALLON CONTAINER

**STATE OF ILLINOIS  
 DEPARTMENT OF TRANSPORTATION**

**PLAN SHEET C004  
 STA 70+00 TO 81+00**

FAU	SECTION	COUNTY	TOTAL SHEETS	SHEET NO.
343	CR-00095-0C-SW	COOK	17	8
CONTRACT NO. 63614			ILLINOIS FED. AID PROJECT	

DESIGNED	TMC
DRAWN	TMC
CHECKED	AJB
DATE	8-16-2010

USER NAME	10/2/2010
PLOT SCALE	N/A
PLOT DATE	10/2/2010

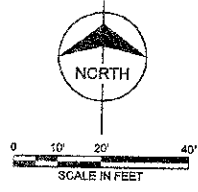
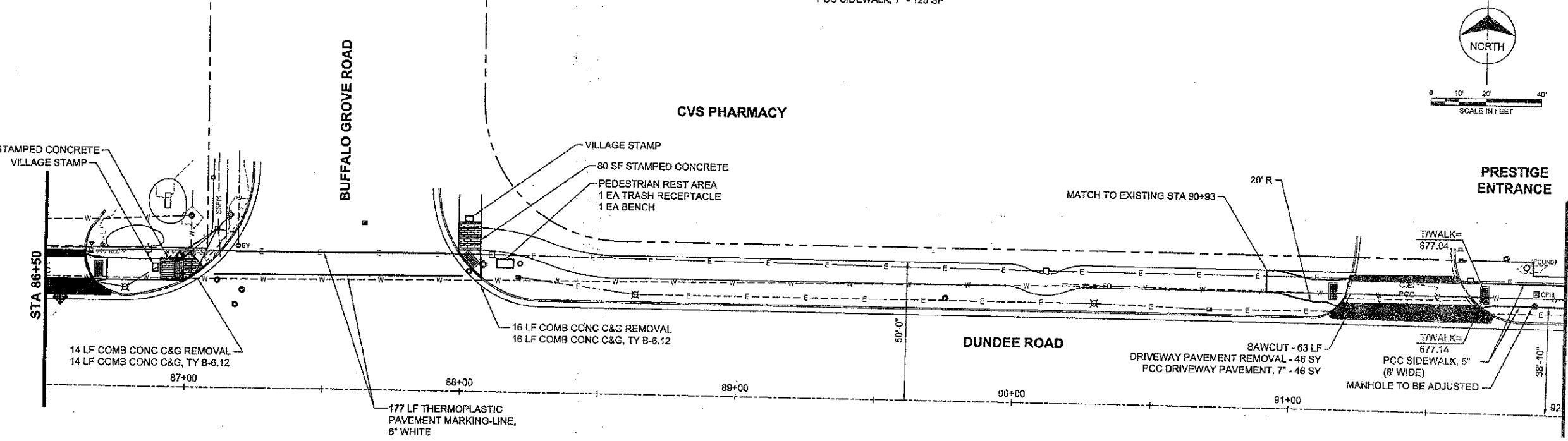
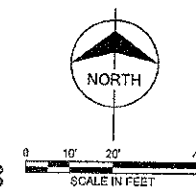
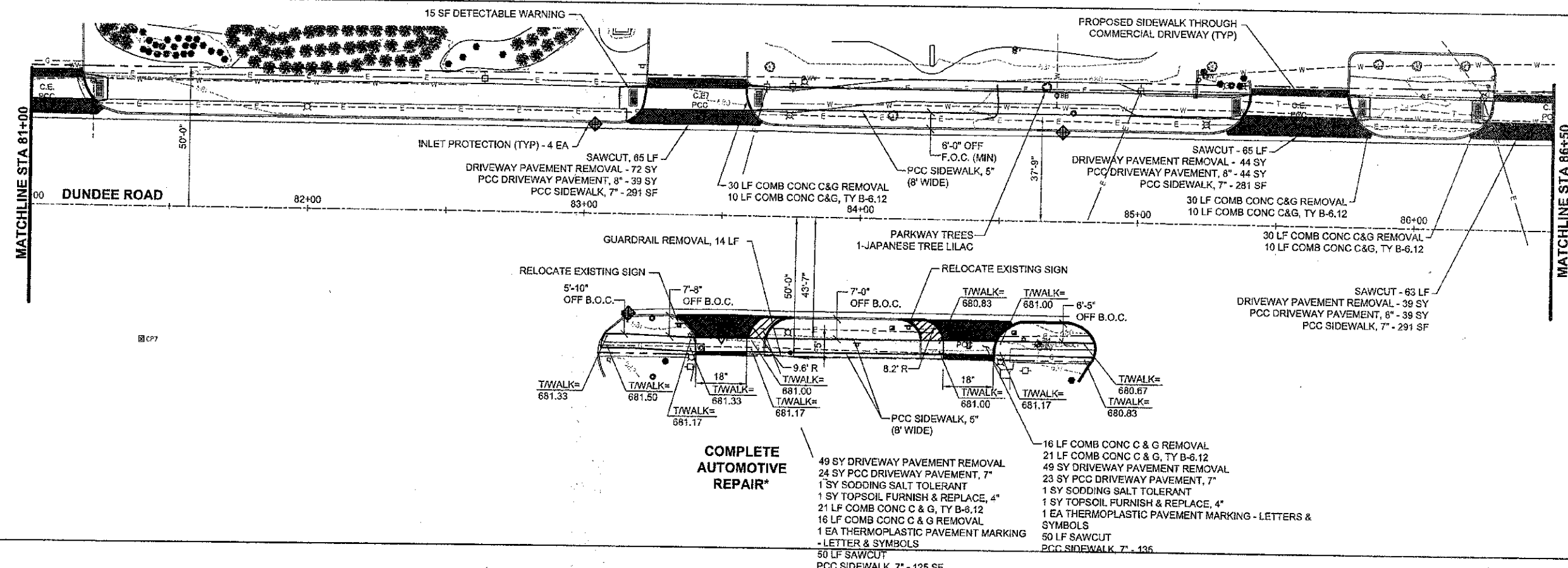
REVISED	
REVISED	
REVISED	
REVISED	

SCALE: 1"=20' SHEET NO. 4 OF 8 SHEETS STA. 70+00 TO STA. 77+88



PLAN	DATE
SWITCH	BY
NO. OF WAY CHECKED	
NO. OF WAY CHECKED	
NO. OF WAY CHECKED	
NO. OF WAY CHECKED	
NO. OF WAY CHECKED	
NO. OF WAY CHECKED	
NO. OF WAY CHECKED	
NO. OF WAY CHECKED	
NO. OF WAY CHECKED	

PROFILE	DATE
NO. OF WAY CHECKED	BY
NO. OF WAY CHECKED	
NO. OF WAY CHECKED	
NO. OF WAY CHECKED	
NO. OF WAY CHECKED	
NO. OF WAY CHECKED	
NO. OF WAY CHECKED	
NO. OF WAY CHECKED	
NO. OF WAY CHECKED	



NOTES:  
 UTILIZE EQUAL QUANTITIES OF THE FOLLOWING FOR DAY LILIES:  
 HEMEROCALLIS HAPPY RETURNS (HAPPY RETURNS DAYLILY), 1-GALLON CONTAINER  
 HEMEROCALLIS CHICAGO APACHE (CHICAGO APACHE DAYLILY), 1 GALLON CONTAINER  
 HEMEROCALLIS ROSY RETURNS (ROSY RETURNS DAYLILY), 1-GALLON CONTAINER

QUANTITIES

165 SF DETECTABLE WARNING
2398 SF SIDEWALK REMOVAL
2356 SF PCC SIDEWALK, 5"
1481 SF PCC SIDEWALK, 7"

FILE NAME =	USER NAME = D. CHAVEZ	DESIGNED -- TMC	REVISED --
I:\Buffalo Grove\54363 - Dundee Road		DRAWN -- TMC	REVISED --
Survey and Map		CHECKED -- AJB	REVISED --
Application\CAD\CIVIL\54363\008		DATE -- 8-16-2010	REVISED --

STATE OF ILLINOIS  
 DEPARTMENT OF TRANSPORTATION

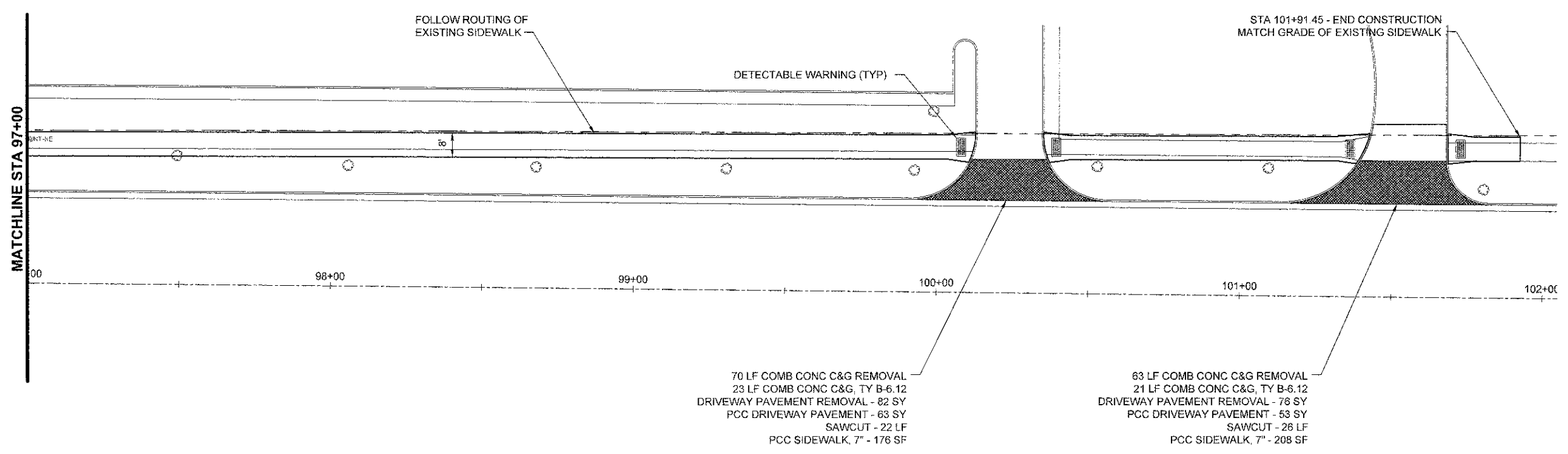
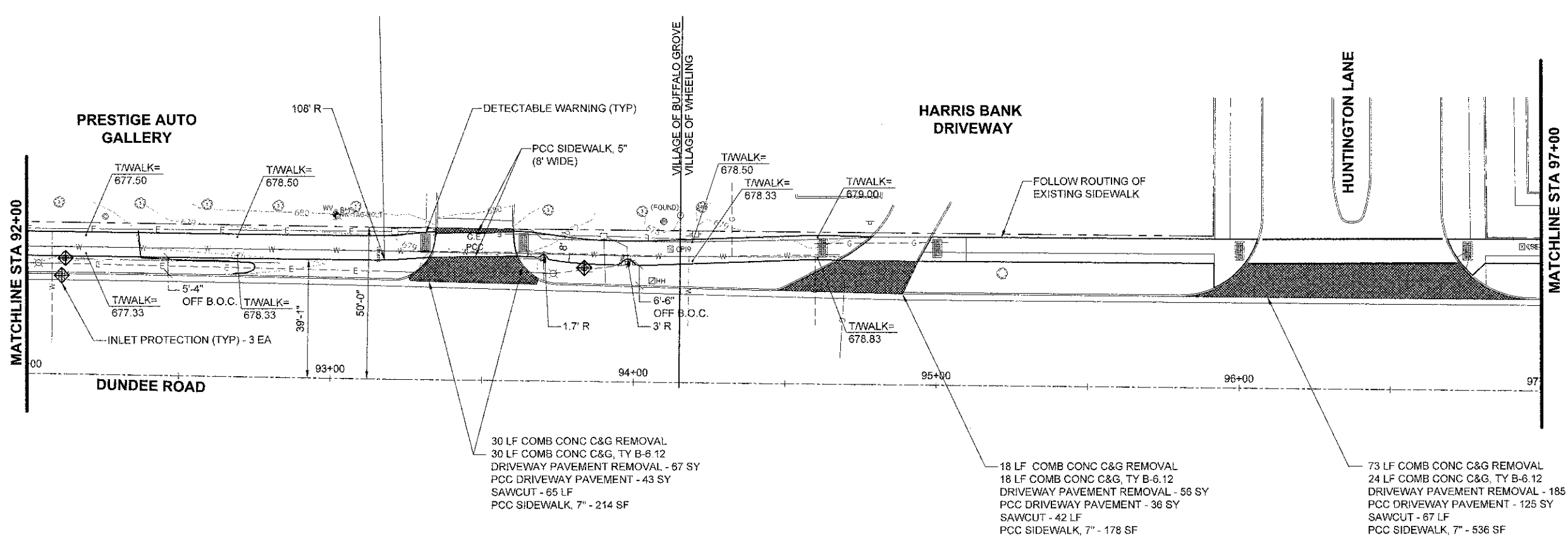
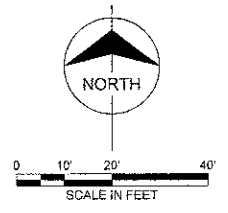
PLAN SHEET C005  
 STA 81+00 TO 92+00

F.A.U. R/F.	SECTION	COUNTY	TOTAL SHEETS	SHEET NO.
1273	08-00005-00-SW	COOK	17	9

SCALE: 1"=20' SHEET NO. 5 OF 6 SHEETS STA. 83+07 TO STA. 92+00 CONTRACT NO. 63614

DATE	
DESIGNED	TMC
DRAWN	TMC
CHECKED	AJD
DATE	8-16-2010

PROJECT	Buffalo Grove
SECTION	08-00095-00-SW
COUNTY	COOK
TOTAL SHEETS	17
SHEET NO.	10
CONTRACT NO.	63614



**QUANTITIES FOR BUFFALO GROVE**  
 30 SF DETECTABLE WARNING  
 971 SF SIDEWALK REMOVAL  
 1508 SF PCC SIDEWALK, 5"  
 214 SF PCC SIDEWALK, 7"

**QUANTITIES FOR WHEELING**  
 120 SF DETECTABLE WARNING  
 3272 SF SIDEWALK REMOVAL  
 5236 SF PCC SIDEWALK, 5"  
 1347 SF PCC SIDEWALK, 7"

30 LF COMB CONC C&G REMOVAL  
 30 LF COMB CONC C&G, TY B-6.12  
 DRIVEWAY PAVEMENT REMOVAL - 67 SY  
 PCC DRIVEWAY PAVEMENT - 43 SY  
 SAWCUT - 65 LF  
 PCC SIDEWALK, 7" - 214 SF

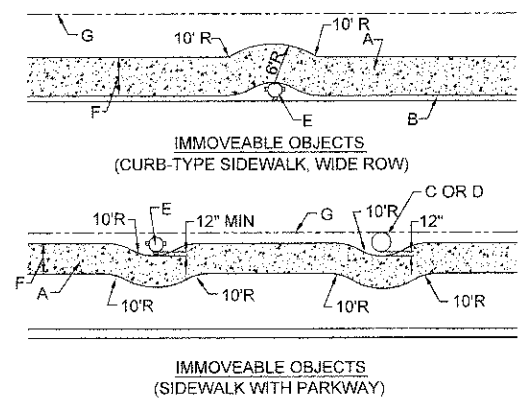
18 LF COMB CONC C&G REMOVAL  
 18 LF COMB CONC C&G, TY B-6.12  
 DRIVEWAY PAVEMENT REMOVAL - 56 SY  
 PCC DRIVEWAY PAVEMENT - 36 SY  
 SAWCUT - 42 LF  
 PCC SIDEWALK, 7" - 178 SF

73 LF COMB CONC C&G REMOVAL  
 24 LF COMB CONC C&G, TY B-6.12  
 DRIVEWAY PAVEMENT REMOVAL - 185 SY  
 PCC DRIVEWAY PAVEMENT - 125 SY  
 SAWCUT - 67 LF  
 PCC SIDEWALK, 7" - 536 SF

70 LF COMB CONC C&G REMOVAL  
 23 LF COMB CONC C&G, TY B-6.12  
 DRIVEWAY PAVEMENT REMOVAL - 82 SY  
 PCC DRIVEWAY PAVEMENT - 63 SY  
 SAWCUT - 22 LF  
 PCC SIDEWALK, 7" - 176 SF

63 LF COMB CONC C&G REMOVAL  
 21 LF COMB CONC C&G, TY B-6.12  
 DRIVEWAY PAVEMENT REMOVAL - 76 SY  
 PCC DRIVEWAY PAVEMENT - 53 SY  
 SAWCUT - 26 LF  
 PCC SIDEWALK, 7" - 208 SF

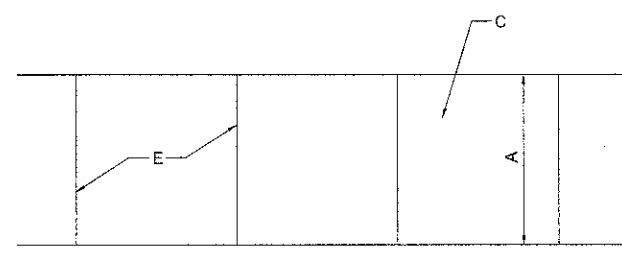
PLAN  
 DATE  
 DRAWN  
 CHECKED  
 IN CHARGE  
 PROJECT NO.  
 SHEET NO.



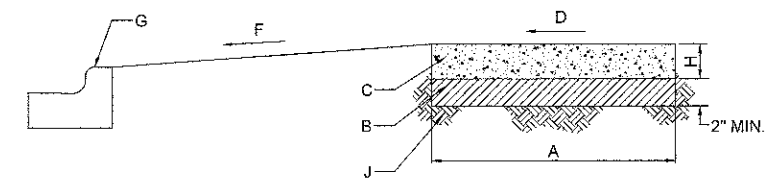
**SIDEWALK OBSTRUCTIONS**  
 NOT TO SCALE

- CONSTRUCTION NOTE:**
- A. SIDEWALK
  - B. CURB
  - C. SERVICE POLE, SEE NOTES 1 AND 2.
  - D. TREE TRUNK, SEE NOTE 1
  - E. FIRE HYDRANT, SEE NOTES 1 AND 2.
  - F. SIDEWALK WIDTH
  - G. RIGHT-OF-WAY (ROW)

- GENERAL NOTES:**
1. A FIRE HYDRANT, SERVICE POLE OR TREE TRUNK SHALL BE CONSIDERED IMMOVEABLE ONLY WHEN DIRECTED BY THE VILLAGE ENGINEER.
  2. WHEN A SERVICE POLE OR FIRE HYDRANT IS LOCATED WITHIN THE SIDEWALK AREA, AND IS CONSIDERED IMMOVEABLE, A 1/2" EXPANSION JOINT SHALL BE INSTALLED ENCIrcLING THE OBJECT. THIS WORK SHALL BE INCIDENTAL TO THE SIDEWALK COST.



PLAN

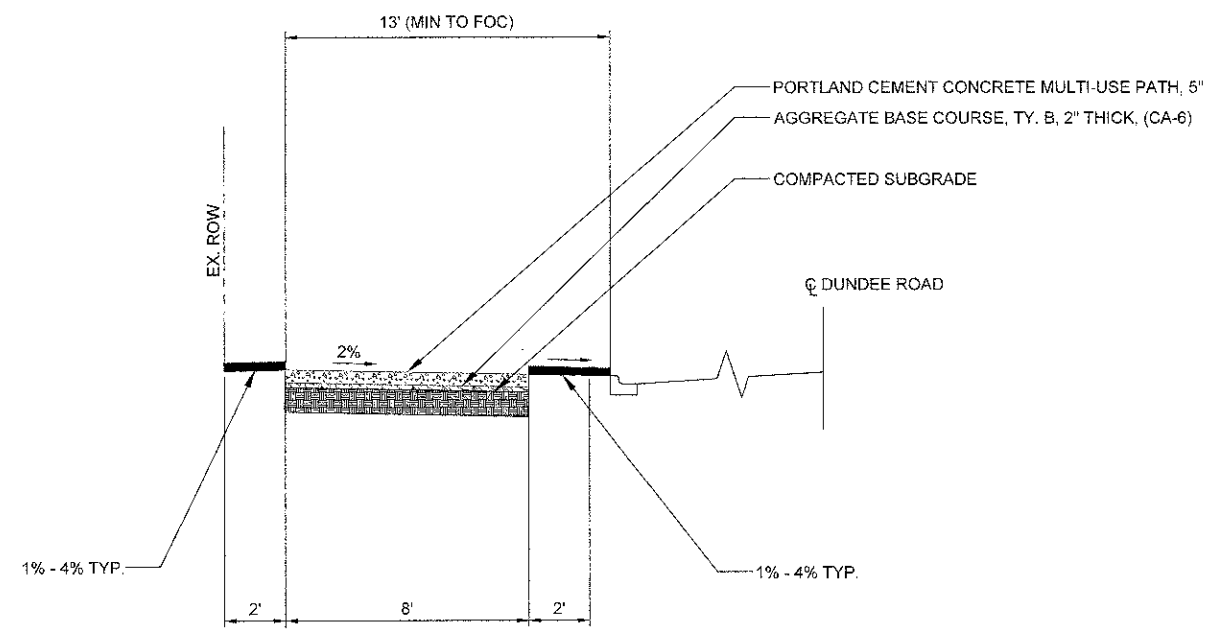


PROFILE  
 SIDEWALK DETAIL

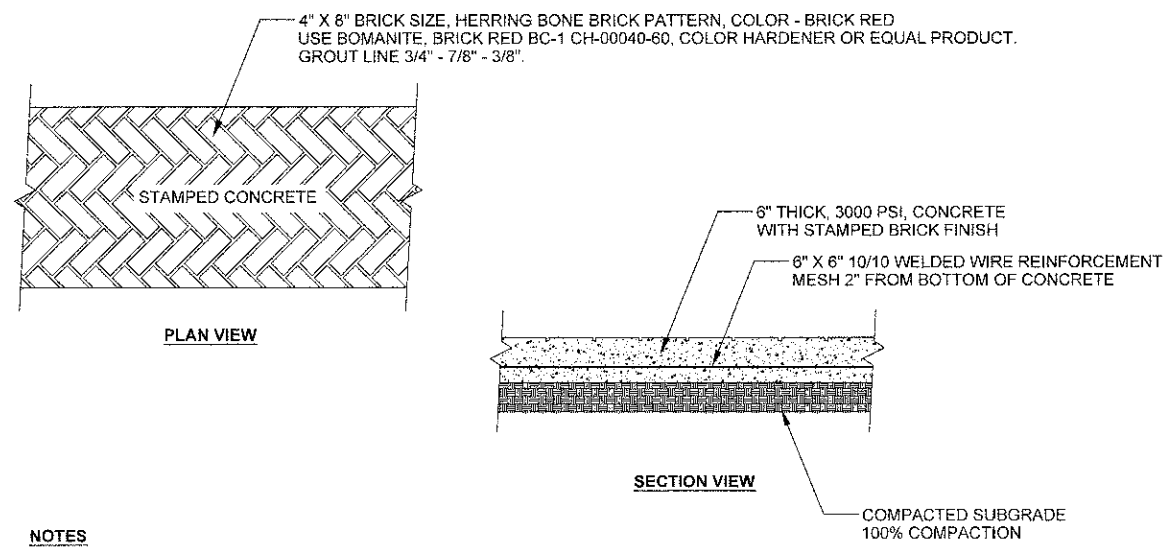
- CONSTRUCTION NOTES**
- A. 5' NORMAL WIDTH OR AS INDICATED ON PLANS
  - B. AGGREGATE BASE COURSE, TY. B, 2" THICK, (CA-6)
  - C. P.C.C. SIDEWALK
  - D. MAXIMUM SLOPE OF 2% TO STREET SIDE, OR AS NOTED ON PLAN
  - E. JOINTS, SEE NOTES 3 AND 4
  - F. SLOPE 2% TO 8% TOWARDS STREET FOR HIGH-VOLUME COMMERCIAL/INDUSTRIAL
  - G. CURB AND GUTTER
  - H. CONCRETE THICKNESS, SEE NOTE 1
  - J. COMPACTED SUBGRADE TO 95% OF THE STANDARD LABORATORY DENSITY

- GENERAL NOTES**
1. STANDARD THICKNESS OF PCC SIDEWALK SHALL BE A MINIMUM OF 5". THICKNESS SHALL BE 7" ACROSS DRIVEWAY ENTRANCE..
  2. WHERE WOODEN FORMS ARE USED, 2x4's ARE NOT ALLOWED. ONLY 2x6's SHALL BE USED.
  3. PREFORMED 3/4" EXPANSION JOINTS SHALL BE CONSTRUCTED AT MAX. SPACING OF 40'.
  4. FORMED OR SAW-CUT CONTRACTION JOINTS SHALL BE SPACED GENERALLY 5' APART, BUT NO LESS THAN 4' AND NO MORE THAN 6'.
  5. 1/2" FOAM EXPANSION JOINTS SHALL BE INSTALLED WHERE SIDEWALK ABUTS BUILDINGS, TRAFFIC SIGNAL FOUNDATIONS, SERVICE POLES, AND OTHER IMMOVABLE STRUCTURES.
  6. CONCRETE TO BE MINIMUM 6-BAG MIX.

**P.C.C. SIDEWALK 5" & 7"**  
 NOT TO SCALE



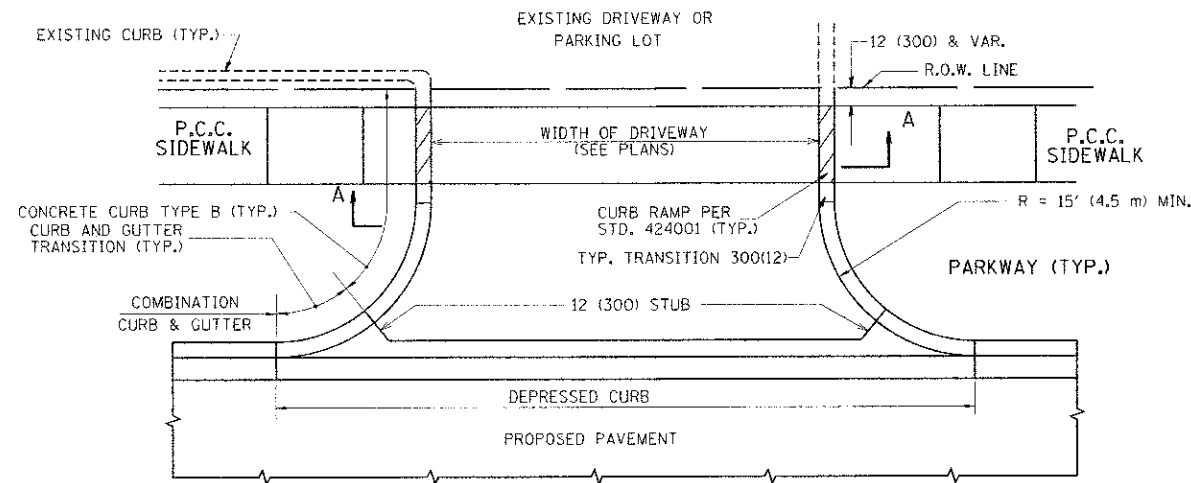
**TYPICAL CROSS SECTION FOR TWO-WAY MULTI-USE PATH**  
 STA 3+2.11 TO STA 15+00



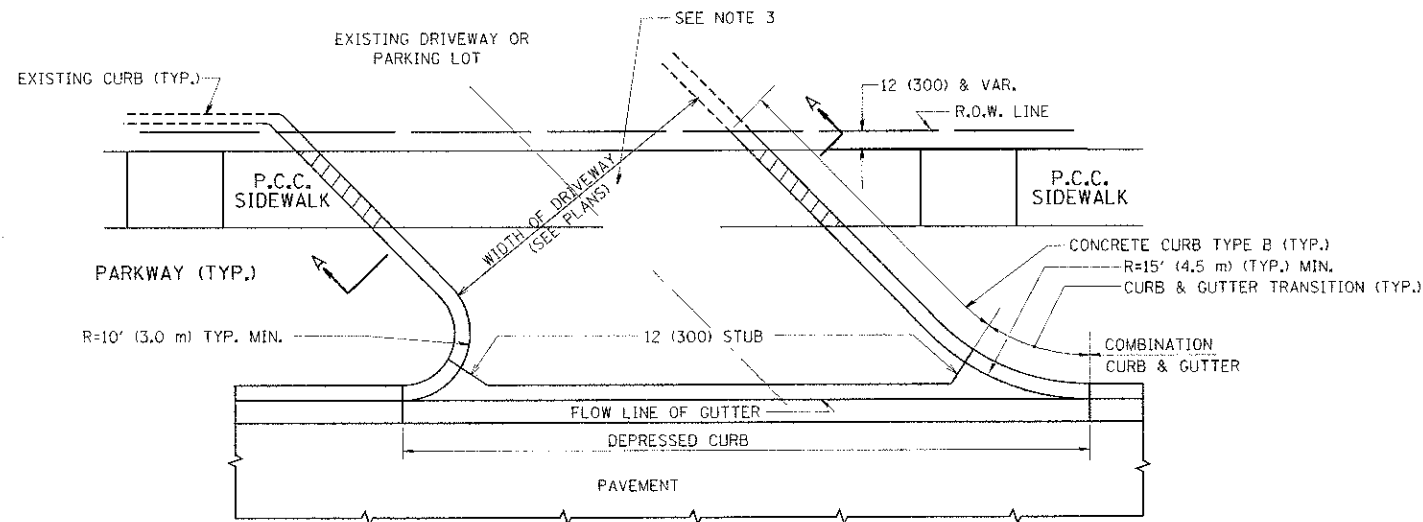
- NOTES**
1. PROVIDE CONTROL JOINTS SPACED EVERY 10 FEET ON CENTER.
  2. PROVIDE EXPANSION JOINTS AT ALL RIGID OBJECTS

**STANDARD STAMPED COLORED CONCRETE**  
 NO TO SCALE

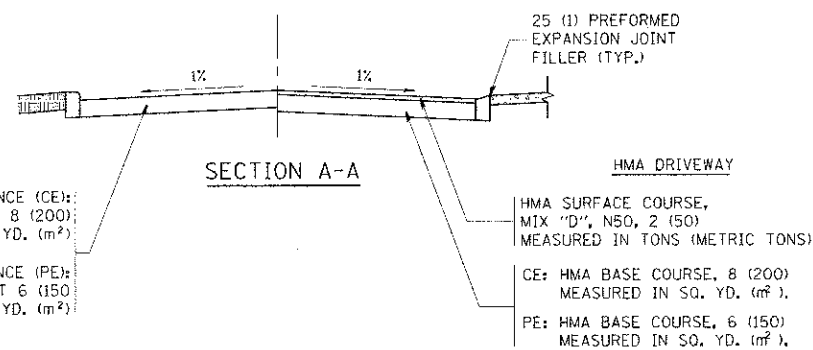
FILE NAME: R:\Buffalo Grove\04602 - Dundee Road	DESIGNED: TMC	REVISOR: JG/25/2012	STATE OF ILLINOIS DEPARTMENT OF TRANSPORTATION	SECTION: 08-00095-00-SW	COUNTY: COOK	TOTAL SHEETS: 17	SHEET NO.: 11
DRAWN: TMC	CHECKED: AJS	DATE: 8-16-2010	DETAIL SHEET 1 OF 1	CONTRACT NO. 63614			
PLGT: NONE / N/A	DATE: 8-16-2010	SCALE: N/A	SHEET NO. 1 OF 1 SHEETS	STA. TO STA.	ILLINOIS FED. AID PROJECT		



WITH CONCRETE CURB, TYPE B

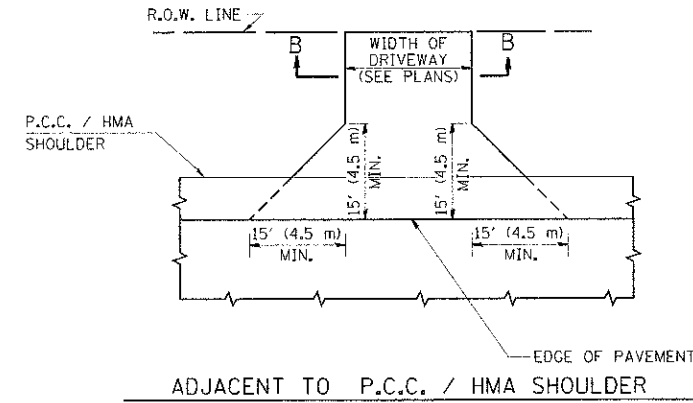


WITH CONCRETE CURB, TYPE B

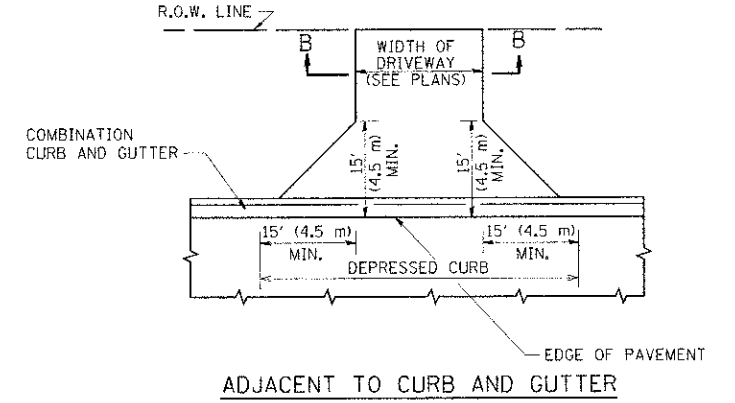


**RIGID DRIVEWAY**  
 COMMERCIAL ENTRANCE (CE):  
 P.C.C. DRIVEWAY PAVEMENT 8 (200)  
 MEASURED IN SQ. YD. (m<sup>2</sup>)  
 NON-COMMERCIAL ENTRANCE (PE):  
 P.C.C. DRIVEWAY PAVEMENT 6 (150)  
 MEASURED IN SQ. YD. (m<sup>2</sup>)

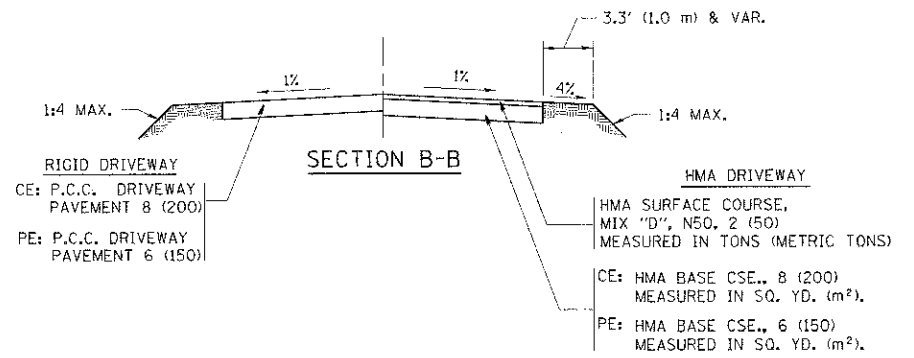
**HMA DRIVEWAY**  
 HMA SURFACE COURSE,  
 MIX "D", N50, 2 (50)  
 MEASURED IN TONS (METRIC TONS)  
 CE: HMA BASE COURSE, 8 (200)  
 MEASURED IN SQ. YD. (m<sup>2</sup>)  
 PE: HMA BASE COURSE, 6 (150)  
 MEASURED IN SQ. YD. (m<sup>2</sup>)



ADJACENT TO P.C.C. / HMA SHOULDER



ADJACENT TO CURB AND GUTTER



**GENERAL NOTES:**

DRIVEWAY SLOPES, LOCATIONS, & GEOMETRIC LAYOUT SHALL BE IN ACCORDANCE WITH THE LATEST EDITION OF THE "HANDBOOK FOR POLICY ON PERMITS FOR ACCESS DRIVEWAYS TO STATE HIGHWAYS". FOR FURTHER LAYOUT REQUIREMENTS, REFER TO ILLUSTRATIONS IN THE PERMIT HANDBOOK. DRIVEWAYS SHALL BE REPLACED IN KIND, UNLESS OTHERWISE NOTED ON THE PLANS.

COMMERCIAL DRIVEWAYS SHALL BE CONSTRUCTED WITH CONCRETE CURB, TYPE B RETURNS EXCEPT WHEN THE SIDEWALK EDGE IS 4 FEET (1.2 METERS) OR LESS FROM THE BACK OF CURB, CONSTRUCT A FLARE DRIVEWAY WITHOUT CURB.

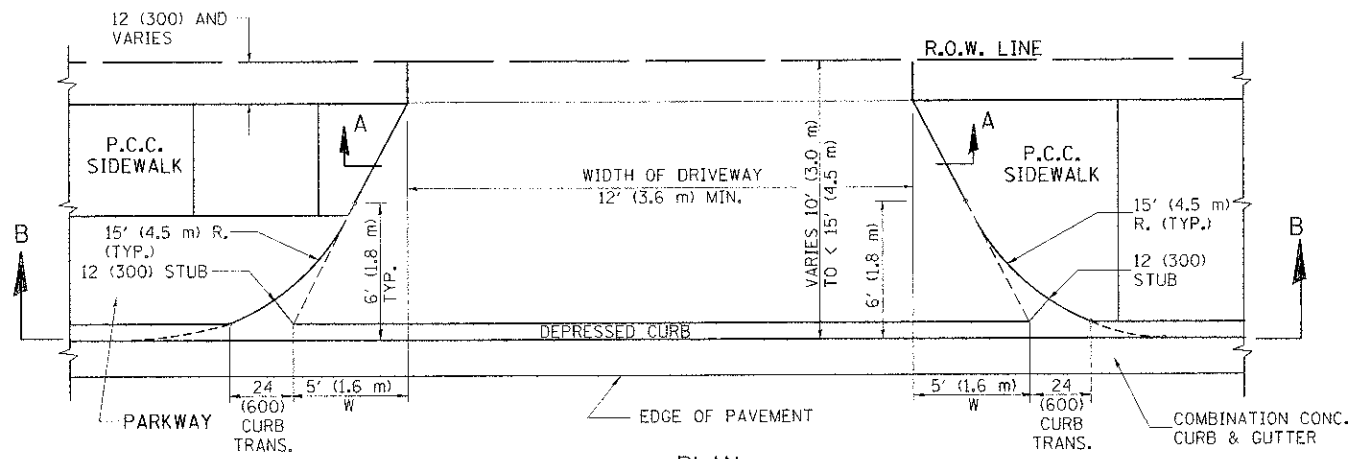
THE RESIDENT ENGINEER SHALL CONTACT THE TRAFFIC PERMIT OFFICE AT 847/ 705-4131 FOR ANY QUESTIONS ON DRIVEWAYS SHOWN IN THE PLANS; SPECIFICALLY IN REFERENCE TO ADDITIONAL AND/OR RELOCATION/REMOVAL OF A DRIVEWAY.

COMBINATION CONCRETE CURB & GUTTER SHALL BE MEASURED STRAIGHT ACROSS THE DRIVEWAY. NO ADDITIONAL COMPENSATION WILL BE ALLOWED FOR THE CURB & GUTTER TRANSITION.

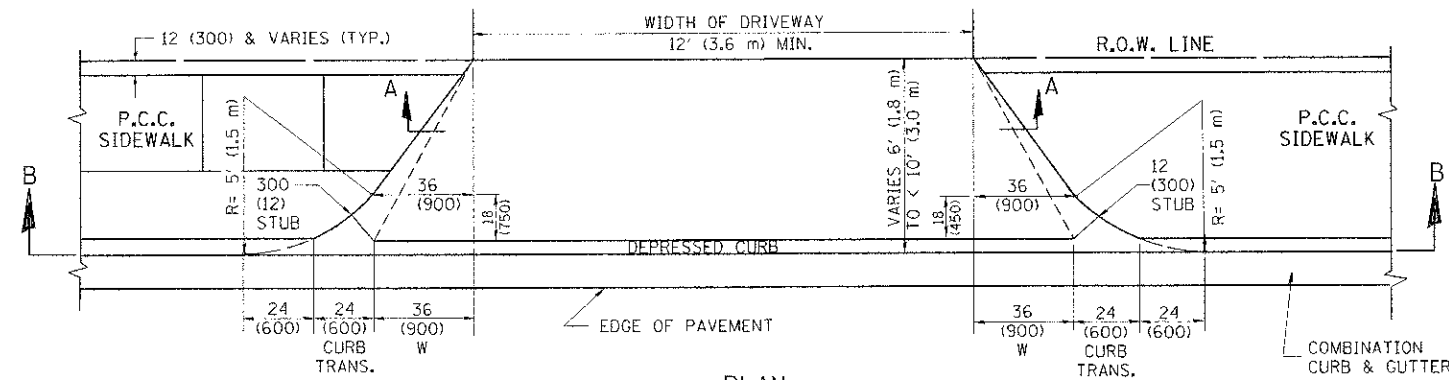
1 (25) PREFORMED EXPANSION JOINT FILLER WILL NOT BE PAID SEPARATELY, BUT SHALL BE CONSIDERED INCLUDED IN THE COST OF THE P.C.C. DRIVEWAY PAVEMENT OR P.C.C. SIDEWALK.

WHEN THE P.C.C. SIDEWALK EXTENDS THROUGH THE DRIVEWAY, THE THICKNESS OF THE SIDEWALK IN THE DRIVEWAY AREA SHALL BE THE SAME AS THE DRIVEWAY THICKNESS. SIDEWALK WILL BE PAID FOR AS P.C.C. SIDEWALK OF THE THICKNESS SPECIFIED. SIDEWALK CROSS SLOPE THRU DRIVEWAY AREA TO BE A MAXIMUM OF 1:50.

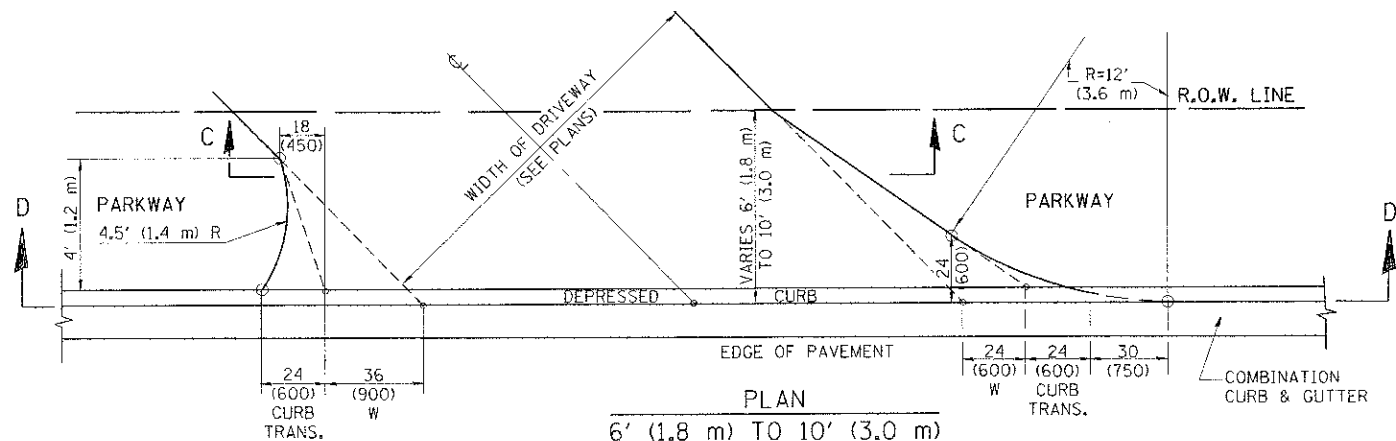
FILE NAME =	USER NAME = lsgsa	DESIGNED - R. SHAH	REVISED - P. LaFLUER 04-15-03	<b>STATE OF ILLINOIS DEPARTMENT OF TRANSPORTATION</b>	<b>DRIVEWAY DETAILS - DISTANCE BETWEEN R.O.W. AND FACE OF CURB &amp; EDGE OF SHOULDER &gt;= 15' (4.5 m)</b>	F.A. R.T.E.	SECTION	COUNTY	TOTAL SHEETS	SHEET NO.
cr:\pwwork\spedat\lsgsa\1200315\1161.dwg	PLT SCALE = 50.0000 1/1 in.	DRAWN -	REVISED - R. BORO 01-01-07			343	08-00095-00-SW	Cook	17	12
PLT DATE = 9/6/2011	DATE = 11-04-95	CHECKED -	REVISED - R. BORO 06-11-08			BDD156-07 (BD-01)		CONTRACT NO.		FED. ROAD DIST. NO. 1 ILLINOIS FED. AID PROJECT
		DATE = 11-04-95	REVISED - R. BORO 09-06-11	SCALE: NONE	SHEET NO. 1 OF 1 SHEETS	STA.	TO STA.			



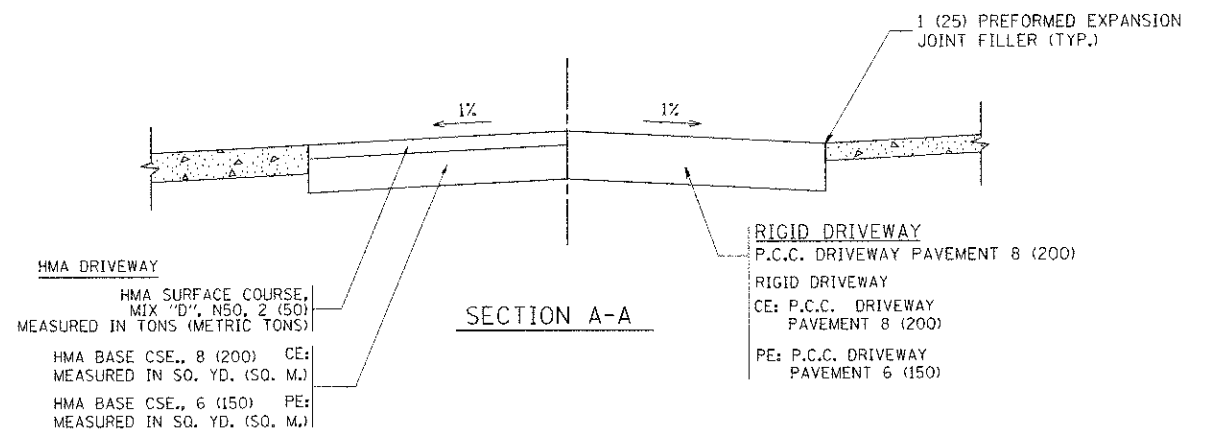
PLAN  
10' (3.0 m) TO < 15' (4.5 m)



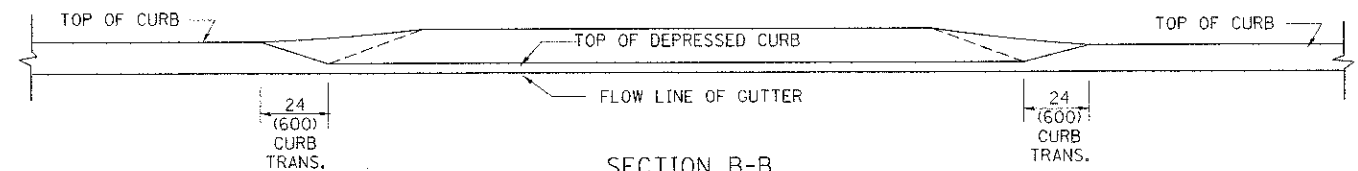
PLAN  
6' (1.8 m) TO < 10' (3.0 m)



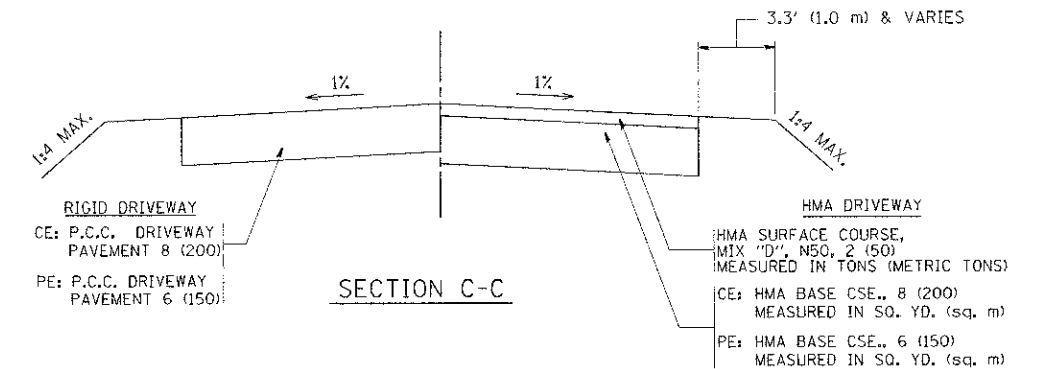
PLAN  
6' (1.8 m) TO 10' (3.0 m)



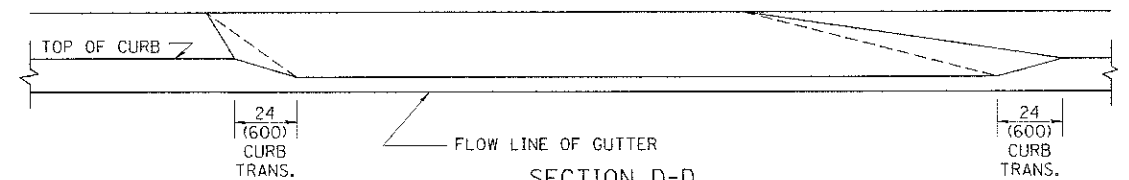
SECTION A-A



SECTION B-B



SECTION C-C



SECTION D-D

GENERAL NOTES

DRIVEWAY SLOPES, LOCATIONS, & GEOMETRIC LAYOUT SHALL BE IN ACCORDANCE WITH THE LATEST EDITION OF THE "HANDBOOK FOR POLICY ON PERMITS FOR ACCESS DRIVEWAYS TO STATE HIGHWAYS". FOR FURTHER LAYOUT REQUIREMENTS, REFER TO ILLUSTRATION 10 IN THE PERMIT HANDBOOK. WHERE SIDEWALKS EXIST, DRIVEWAYS SHALL BE REPLACED WITH RIGID PAVEMENT. WHERE NO SIDEWALKS EXIST, DRIVEWAYS SHALL BE REPLACED IN KIND. SIDEWALK CROSS SLOPE THRU DRIVEWAY AREA TO BE A MAXIMUM OF 1:50.

WHEN THE DISTANCE BETWEEN R.O.W. AND THE BACK OF CURB IS EQUAL TO OR LESS THAN 8' (2.4 m), THE P.C.C. SIDEWALK SHALL EXTEND TO THE BACK OF CURB.

THE RESIDENT ENGINEER SHALL CONTACT THE TRAFFIC PERMIT OFFICE AT 847/ 705-4131 FOR ANY QUESTIONS ON DRIVEWAYS SHOWN IN THE PLANS; SPECIFICALLY IN REFERENCE TO ADDITIONAL AND/OR RELOCATION/REMOVAL OF A DRIVEWAY.

COMBINATION CONCRETE CURB & GUTTER SHALL BE MEASURED STRAIGHT ACROSS THE DRIVEWAY. NO ADDITIONAL COMPENSATION WILL BE ALLOWED FOR THE CURB & GUTTER TRANSITION.

THE 1 (25) PREFORMED EXPANSION JOINT FILLER WILL NOT BE PAID SEPARATELY, BUT SHALL BE CONSIDERED INCLUDED IN THE COST OF THE P.C.C. DRIVEWAY PAVEMENT OR P.C.C. SIDEWALK.

"W" VARIES FROM 36 (900) TO 5' (1.5 m) PROPORTIONAL TO THE LENGTH (L), FROM 6' (1.8 m) TO 10' (3 m).

ALL DIMENSIONS ARE IN INCHES (MILLIMETERS) UNLESS OTHERWISE NOTED.

FILE NAME =	USER NAME = lsgsa	DESIGNED - R. SHAH	REVISED - M. GOMEZ 04-06-01
PLT SCALE = 50.0000 1/16"	DATE = 11-06-95	DRAWN - R. BORO 01-01-07	REVISED - P. LOFLEUR 04-15-03
PLT DATE = 10/28/2011		CHECKED - R. BORO 01-01-07	REVISED - R. BORO 01-01-07
		DATE = 11-06-95	REVISED - R. BORO 09-06-11

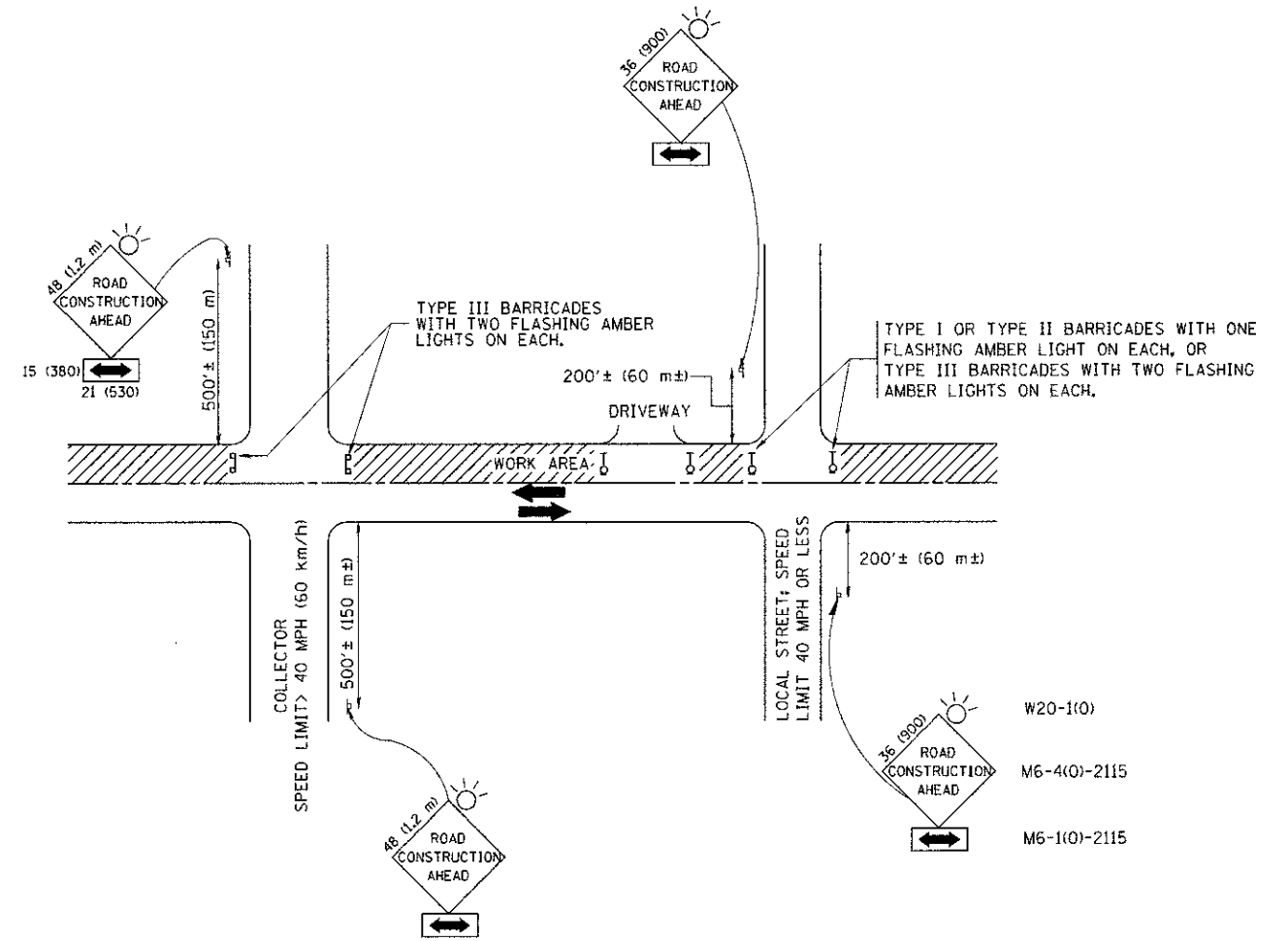
STATE OF ILLINOIS  
DEPARTMENT OF TRANSPORTATION

DRIVEWAY DETAILS  
DISTANCE BETWEEN ROW AND FACE OF CURB < 15' (4.5 m)

SCALE: NONE SHEET NO. 1 OF 1 SHEETS STA. TO STA.

F.A. RTE. 343	SECTION 08-0095-00-SW	COUNTY Cook	TOTAL SHEETS 17	SHEET NO. 13
BD400-02 (BD-02)			CONTRACT NO.	
FED. ROAD DIST. NO. 1 ILLINOIS FED. AID PROJECT				





TRAFFIC CONTROL AND PROTECTION FOR SIDE ROADS, INTERSECTIONS, AND DRIVEWAYS

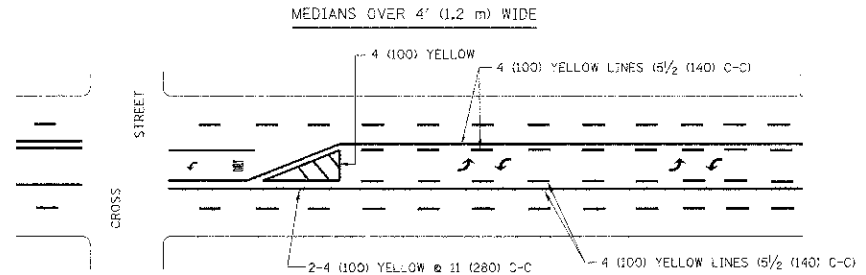
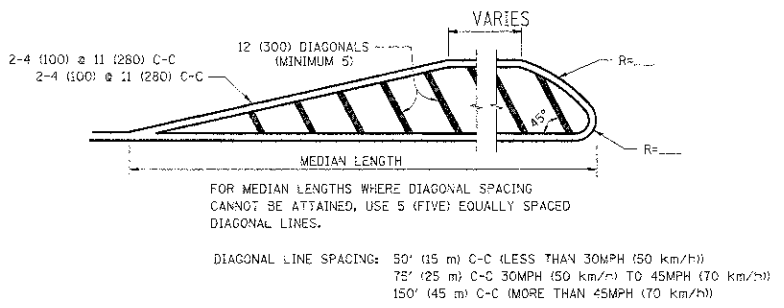
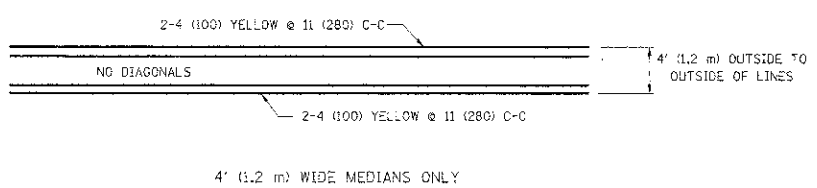
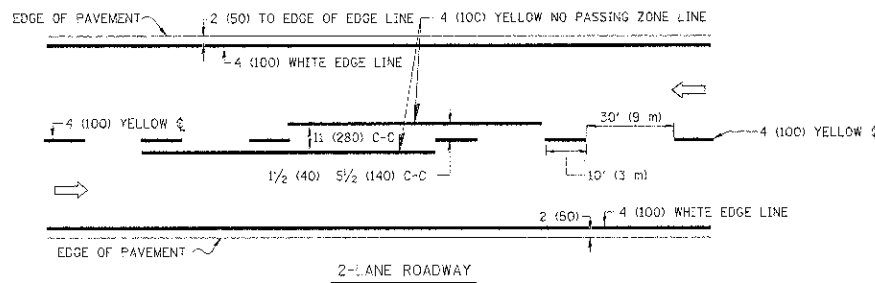
NOTES:

- A. FOR NO LANE RESTRICTION ON THE SIDE ROAD OR DRIVEWAYS
  1. SIDE ROAD WITH A SPEED LIMIT OF 40 MPH (60 km/h) OR LESS AS SHOWN ON THE DRAWING AND AS DIRECTED BY THE ENGINEER:
    - a) ONE ROAD CONSTRUCTION AHEAD SIGN 36 x 36 (900x900) WITH A FLASHER AND FLAG MOUNTED ON IT APPROXIMATELY 200' (60 m) IN ADVANCE OF THE MAIN ROUTE.
    - b) THE CLOSED PORTION OF THE MAIN ROUTE SHALL BE PROTECTED BY BLOCKING WITH TYPE I, TYPE II OR TYPE III BARRICADES, 1/3 OF THE CROSS SECTION OF THE CLOSED PORTION.
  2. SIDE ROAD WITH A SPEED LIMIT GREATER THAN 40 MPH (60 km/h) AS SHOWN ON THE DRAWING AND AS DIRECTED BY THE ENGINEER:
    - a) ONE ROAD CONSTRUCTION AHEAD SIGN 48 x 48 (1,2 m x 1,2 m) WITH A FLASHER MOUNTED ON IT APPROXIMATELY 500' (150 m) IN ADVANCE OF THE MAIN ROUTE.
    - b) THE CLOSED PORTION OF THE MAIN ROUTE SHALL BE PROTECTED BY BLOCKING WITH TYPE III BARRICADES, 1/2 OF THE CROSS SECTION OF THE CLOSED PORTION.
  3. WHEN THE SIDE ROAD LIES BETWEEN THE BEGINNING OF THE MAINLINE SIGNING AND THE WORK ZONE, A SINGLE HEADED ARROW (M6-1) SHALL BE USED IN LIEU OF THE DOUBLE HEADED ARROW (M6-4).
- B. FOR A LANE CLOSURE ON A SIDE ROAD OR DRIVEWAY:
 

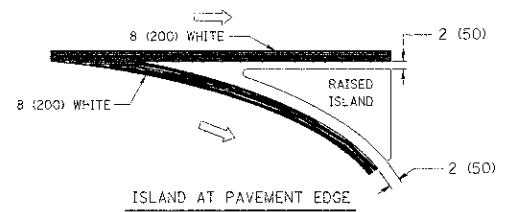
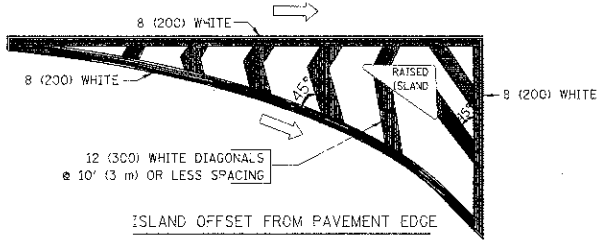
USE APPLICABLE PORTIONS OF THE TYPICAL APPLICATION OF TRAFFIC CONTROL DEVICES (STD. 701501, STD. 701606 OR THE APPROPRIATE STANDARD). THE SPACING OF SIGNS AND BARRICADES SHALL BE ADJUSTED FOR FIELD CONDITIONS AS DIRECTED BY THE ENGINEER. THE DIRECTIONAL ARROW SHALL BE COVERED OR REMOVED WHEN NO LONGER CONSISTENT WITH THE SIDE ROAD LANE CLOSURE.
- C. ADVANCE WARNING SIGNS ARE TO BE OMITTED ON DRIVEWAY UNLESS OTHERWISE NOTED.
- D. THE TRAFFIC CONTROL AND PROTECTION FOR SIDE ROADS, INTERSECTIONS, AND DRIVEWAYS SHALL BE INCIDENTAL TO THE COST OF SPECIFIED TRAFFIC CONTROL STANDARDS OR ITEMS.

All dimensions are in millimeters (inches) unless otherwise shown.

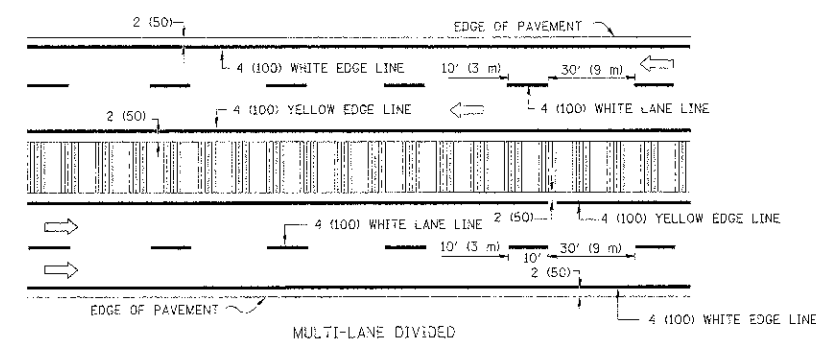
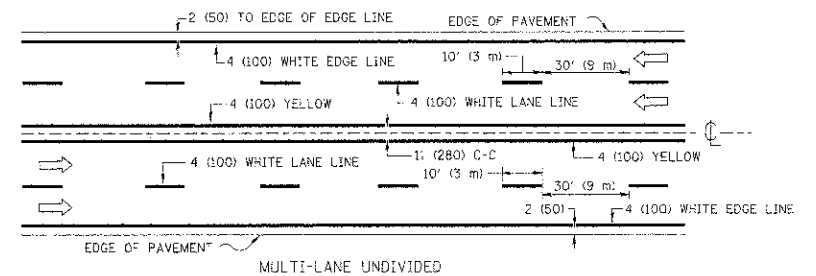
FILE NAME * W:\dststd\22x34\c10.dgn	USER NAME * gajlanobt	DESIGNED - LHA	REVISED - J. OBERLE 10-18-95	<b>STATE OF ILLINOIS DEPARTMENT OF TRANSPORTATION</b>	<b>TRAFFIC CONTROL AND PROTECTION FOR SIDE ROADS, INTERSECTIONS, AND DRIVEWAYS</b>		F.A. RTE.	SECTION	COUNTY	TOTAL SHEETS	SHEET NO.
	PLOT SCALE = 50,000 ' / IN.	CHECKED -	REVISED - A. HOUSEH 03-06-96				393	08-00095-00-8W	COOK	17	15
	PLOT DATE = 1/4/2008	DATE - 06-89	REVISED - T. RAMMACHER 01-06-00				<b>TC-10</b>			CONTRACT NO. 63614	
								FED. ROAD DIST. NO. 1 [ILLINOIS] FED. AID PROJECT			
					SCALE: NONE	SHEET NO. 1 OF 1 SHEETS	STA.	TO STA.			



TYPICAL PAINTED MEDIAN MARKING

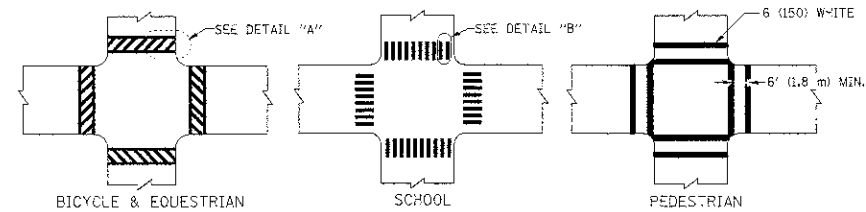


TYPICAL ISLAND MARKING

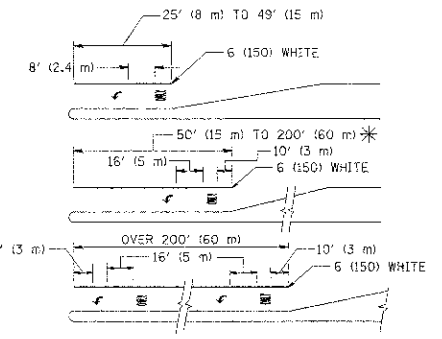


NOTE: MEDIANS WITH BARRIER CURB DO NOT REQUIRE AN EDGE LINE

TYPICAL LANE AND EDGE LINE MARKING



TYPICAL CROSSWALK MARKING



FULL SIZE LETTERS 8' (2.4 m) AND ARROWS SHALL BE USED.  
AREA = 15.6 SQ. FT. (1.5 m<sup>2</sup>) ONLY AREA = 20.8 SQ. FT. (1.9 m<sup>2</sup>)

\* TURN LANES IN EXCESS OF 400' (120 m) IN LENGTH MAY HAVE AN ADDITIONAL SET OF ARROW - "ONLY" INSTALLED MIDWAY BETWEEN THE OTHER TWO SETS OF ARROW - "ONLY".

TYPICAL LEFT (OR RIGHT) TURN LANE

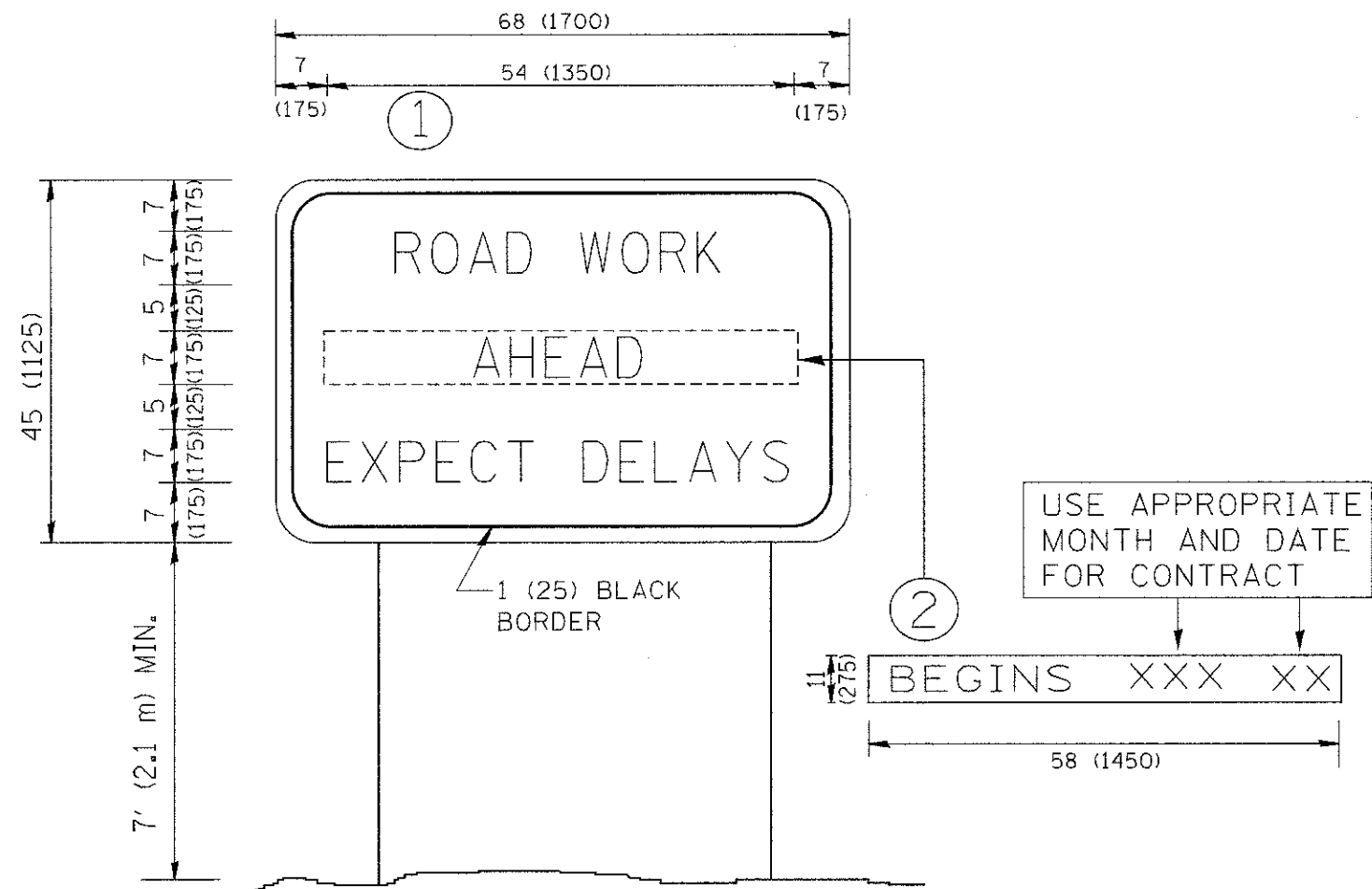
TYPICAL TURN LANE MARKING

TYPE OF MARKING	WIDTH OF LINE	PATTERN	COLOR	SPACING / REMARKS
CENTERLINE ON 2 LANE PAVEMENT	4 (100)	SKIP-DASH	YELLOW	10' (3 m) LINE WITH 30' (9 m) SPACE
CENTERLINE ON MULTI-LANE UNDIVIDED PAVEMENT	2 @ 4 (100)	SOLID	YELLOW	11 (280) C-C
NO PASSING ZONE LINES: FOR ONE DIRECTION	4 (100)	SOLID	YELLOW	5 1/2 (140) C-C FROM SKIP-DASH CENTERLINE
NO PASSING ZONE LINES: FOR BOTH DIRECTIONS	2 @ 4 (100)	SOLID	YELLOW	11 (280) C-C OMIT SKIP-DASH CENTERLINE BETWEEN
LANE LINES	4 (100)	SKIP-DASH	WHITE	10' (3 m) LINE WITH 30' (9 m) SPACE
LANE LINES	5 (125) ON FREEWAYS	SKIP-DASH	WHITE	
DOTTED LINES (EXTENSIONS OF CENTER, LANE OR TURN LANE MARKINGS)	SAME AS LINE BEING EXTENDED	SKIP-DASH	SAME AS LINE BEING EXTENDED	2' (600) LINE WITH 6' (1.8 m) SPACE
EDGE LINES	4 (100)	SOLID	YELLOW-LEFT WHITE-RIGHT	OUTLINE MOUNTABLE MEDIANS IN YELLOW; EDGE LINES ARE NOT USED NEXT TO BARRIER CURB
TURN LANE MARKINGS	6 (150) LINE; FULL SIZE LETTERS & SYMBOLS (8' (2.4m))	SOLID	WHITE	SEE TYPICAL TURN LANE MARKING DETAIL
TWO WAY LEFT TURN MARKING	2 @ 4 (100) EACH DIRECTION	SKIP-DASH AND SOLID	YELLOW	10' (3 m) LINE WITH 30' (9 m) SPACE FOR SKIP-DASH; 5 1/2 (140) C-C BETWEEN SOLID LINE AND SKIP-DASH LINE
TWO WAY LEFT TURN MARKING	8' (2.4m) LEFT ARROW	IN PAIRS	WHITE	SEE TYPICAL TWO-WAY LEFT TURN MARKING DETAIL
CROSSWALK LINES (PEDESTRIAN)	2 @ 6 (150)	SOLID	WHITE	NOT LESS THAN 6' (1.8 m) APART
CROSSWALK LINES (BIKE & EQUESTRIAN)	12 (300) @ 45°	SOLID	WHITE	2' (600) APART
CROSSWALK LINES (LONGITUDINAL BARS (SCHOOL))	12 (300) @ 90°	SOLID	WHITE	2' (600) APART
STOP LINES	24 (600)	SOLID	WHITE	PLACE 4' (1.2 m) IN ADVANCE OF AND PARALLEL TO CROSSWALK, IF PRESENT. OTHERWISE, PLACE AT DESIRED STOPPING POINT. PARALLEL TO CROSSROAD CENTERLINE, WHERE POSSIBLE
PAINTED MEDIANS	2 @ 4 (100) WITH 12 (300) DIAGONALS @ 45°	SOLID	YELLOW; TWO WAY TRAFFIC WHITE; ONE WAY TRAFFIC	11 (280) C-C FOR THE DOUBLE LINE SEE TYPICAL PAINTED MEDIAN MARKING.
NO DIAGONALS USED FOR 4' (1.2 m) WIDE MEDIANS				
GORE MARKING AND CHANNELIZING LINES	8 (200) WITH 12 (300) DIAGONALS @ 45°	SOLID	WHITE	DIAGONALS: 15' (4.5 m) C-C (LESS THAN 30MPH (50 km/h)) 20' (6 m) C-C (30MPH (50 km/h) TO 45MPH (70 km/h)) 30' (9 m) C-C (OVER 45MPH (70 km/h))
RAILROAD CROSSING	24 (600) TRANSVERSE LINES; "RR" (S 6' (1.8 m) LETTERS; 16 (400) LINE FOR "X"	SOLID	WHITE	SEE STATE STANDARD 780001 AREA OF: "R"=3.6 SQ. FT. (0.33 m <sup>2</sup> ) EACH "X"=54.0 SQ. FT. (5.0 m <sup>2</sup> )
SHOULDER DIAGONALS	12 (300) @ 45°	SOLID	WHITE - RIGHT YELLOW - LEFT	50' (15 m) C-C (LESS THAN 30MPH (50 km/h)) 75' (25 m) C-C (30 MPH (50 km/h) TO 45MPH (70 km/h)) 150' (45 m) C-C (OVER 45MPH (70 km/h))

FOR FURTHER DETAILS ON PAVEMENT MARKING REFER TO STANDARD SPECIFICATIONS FOR ROAD AND BRIDGE CONSTRUCTION AND STATE STANDARD 780001.

All dimensions are in inches (millimeters) unless otherwise shown.





**NOTES:**

1. USE BLACK LETTERING ON ORANGE BACKGROUND.
2. ERECT SIGNS IN ADVANCE OF THE LOCATION FOR THE "ROAD CONSTRUCTION AHEAD" SIGN AT LOCATIONS AS DIRECTED BY THE ENGINEER.
3. ERECT SIGN ① WITH INSTALLED PANEL ② ONE WEEK PRIOR TO THE START OF CONSTRUCTION.
4. REMOVE PANEL ② SOON AFTER THE START OF CONSTRUCTION.
5. SEE SPECIAL PROVISION FOR "TEMPORARY INFORMATION SIGNING" FOR ADDITIONAL INFORMATION.
6. ONE SIGN ASSEMBLY EQUALS 25.70 SQ. FT. (2.3 SQ. M.)
7. SHALL BE PAID FOR AS TEMPORARY INFORMATION SIGNING.

ALL DIMENSIONS ARE IN INCHES (MILLIMETERS)  
UNLESS OTHERWISE SHOWN.

FILE NAME = W:\dms\std\22x34\to22.dgn	USER NAME = gqglonob1	DESIGNED -	REVISED - R. MIRS 09-15-97	<b>STATE OF ILLINOIS DEPARTMENT OF TRANSPORTATION</b>	<b>ARTERIAL ROAD INFORMATION SIGN</b>			F.A. RTE. =	SECTION	COUNTY	TOTAL SHEETS	SHEET NO.	
		DRAWN -	REVISED - R. MIRS 12-11-97					345	08-00095-00-SW	BOOK	17	17	
	PLOT SCALE = 50,000' / 1"	CHECKED -	REVISED - T. RAMMACHER 02-02-99					TC-22		CONTRACT NO.			
	PLOT DATE = 1/4/2000	DATE -	REVISED - C. JUCIUS 01-31-07					FED. ROAD DIST. NO. 1 ILLINOIS FED. AID PROJECT					
				SCALE: NONE	SHEET NO. 1 OF 1 SHEETS	STA.	TO STA.						