

DATE	3/17/12	BY	JG
NO.	332	REV.	1
PROJECT	ILLINOIS ROUTE 394		

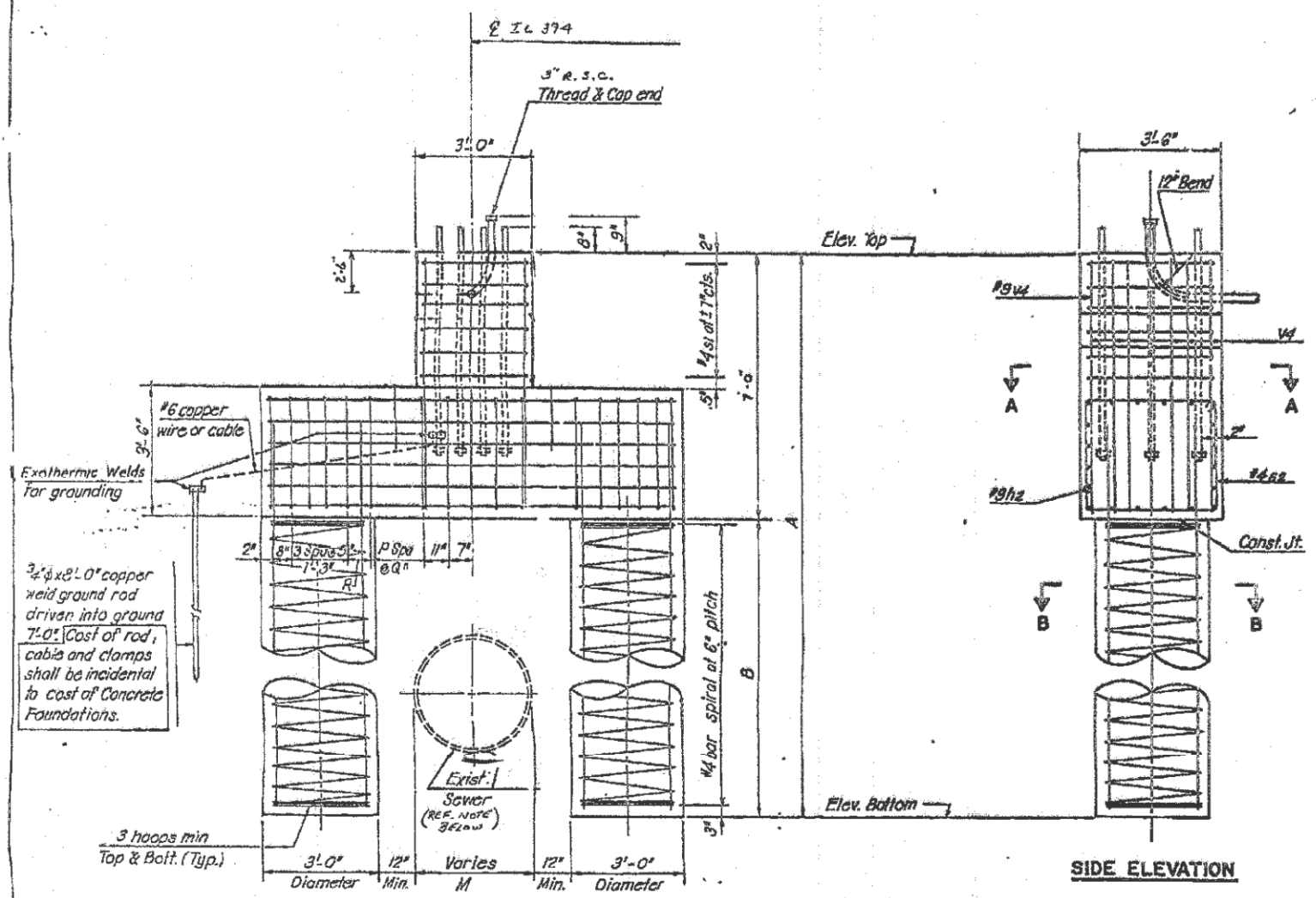
6 of 6

* 0303 & 0303.1 BR-1

- NOTES:**
- The foundation details shown are for Average Cohesive Soil Conditions (stiff clays, sandy clays) and with minimum $Q_u = 1.0 \text{ Tons/Sq. Ft.}$ Q_u being the average value of hand penetrometer readings at various depths of the shaft as determined by the Engineer at time of drilling operations or previous soil investigation.
 - Reinforcing Steel shall be interconnected to the Anchor Bolts via Tie wrapping or other suitable means as approved by the District Bureau of Electrical Operations.
 - For weaker clay soils or granular soil conditions, dimension "B" shall be increased, see Standard Specifications for Traffic Control Items Section T 312.

Station	L	M	P	Q	R	No. of sz Stirrups
277+45	13'-0"		*	*	9"	23

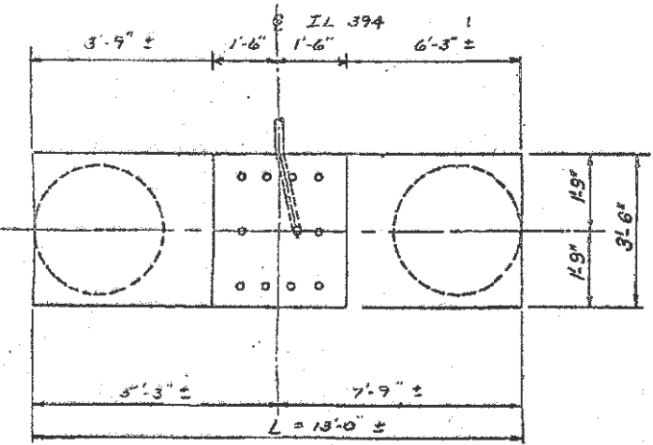
* 2 @ 5" LEFT
* 5 @ 7" & 1 @ 6" RIGHT



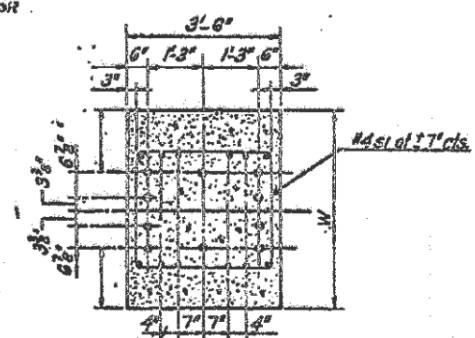
SIDE ELEVATION

FRONT ELEVATION

NOTE: EXISTING 48" SEWER IS APPROX. 1'-3" OFF CENTER FROM THE ROADWAY TO THE WEST. CONTRACTOR SHALL VERIFY LOCATION TO ENSURE 12 INCH MINIMUM CLEARANCES TO DRILLED SHAFTS.

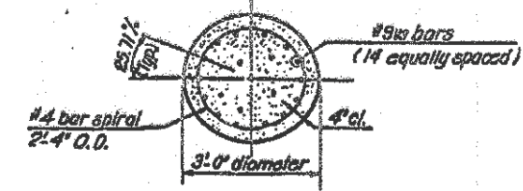


TOP PLAN

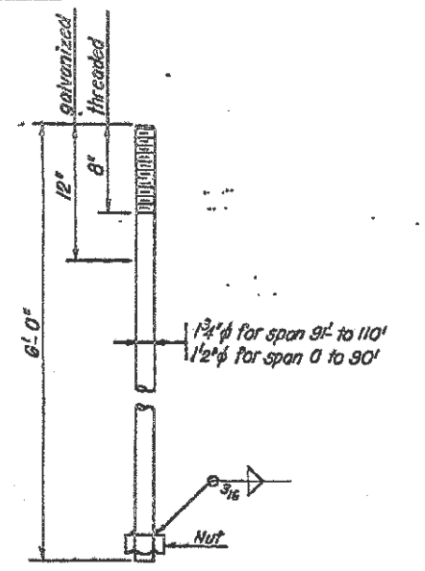


SECTION A-A

NOTE: The anchor bolts and reinforcing cage must be in place before pouring concrete, and shall be adjusted for proper placement of anchor bolts as shown.



SECTION B-B



ANCHOR BOLT DETAILS

(ASTM A-576 - $F_y = 55,000 \text{ P.S.I.}$)
Galvanize upper 12" in accordance with AASHTO M232

DRILLED SHAFT FOUNDATION DETAILS

BAR LIST-EACH FOUNDATION

Bar	No.	Size	Length	Shape
h2	20	#9	L-4"	—
s1	6	#4	12'-4"	□
s2	*	#4	13'-5"	□
v3	28	#9	B+3'-0"	—
v4	12	#9	6'-6"	—

* 4 bar spiral - See Front Elevation
* See Table above for No. of sz Stirrups

DEPTH TABLE

Span	B (min)
70'	15'
80'	15'
90'	16'
100'	17'
110'	18'
124'	20'

Structure No.	Station	B	Anchor Bolt Size	Foundation			Class X Concrete
				Elev. Top	Elev. Btm.	A	
TS-1	277+45	15'	1 1/2" φ	637.00	615.00	22'-0"	15.11

* ELEVATIONS ARE ESTIMATES ONLY - CONTRACTOR SHALL VERIFY.

STATE OF ILLINOIS
DEPARTMENT OF TRANSPORTATION
DISTRICT ONE

**OVERHEAD SIGN STRUCTURES
MEDIAN SUPPORT FOUNDATION DETAILS
TYPE II**

SEC.

DESIGNED BY:
CHECKED BY:
DRAWN BY:

SCALE:
Not to Scale

FOR INFORMATION ONLY

COMPANY NAME: HRGreen
PROJECT CONTACT: HRGreen
DATE PLOTTED: 5/17/2012 1:46:31 PM
FILE NAME: 86100196.11-081-08.dgn
PLOT DRIVER: p4plot
PEN TABLE: Struct 22x34.tbl



USER NAME = mhardin	DESIGNED - J. GUERRIERO	REVISED -
	DRAWN - J. GUERRIERO	REVISED -
PLOT SCALE = N/A	CHECKED - R. DAVIES	REVISED -
PLOT DATE = 5/17/2012	DATE - 5/17/12	REVISED -

STATE OF ILLINOIS
DEPARTMENT OF TRANSPORTATION

SCALE: N/A	SHEET NO. 6 OF 6 SHEETS	STA.	TO STA.
------------	-------------------------	------	---------

F.A. RTE.	SECTION	COUNTY	TOTAL SHEETS	SHEET NO.
332	2011-073-T	COOK	44	32
FED. ROAD DIST. NO.			ILLINOIS FED. AID PROJECT	CONTRACT NO. 60P93