

**SIDE ELEVATION**  
(Showing Safety Chain W/O Sign)

**FRONT ELEVATION**

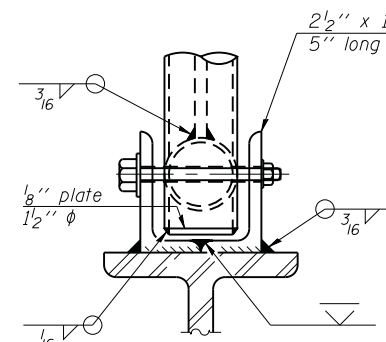
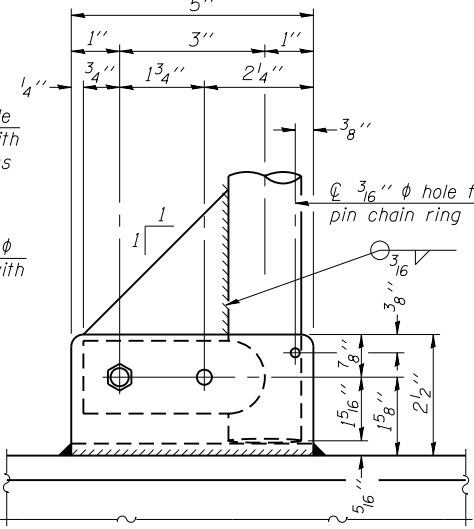
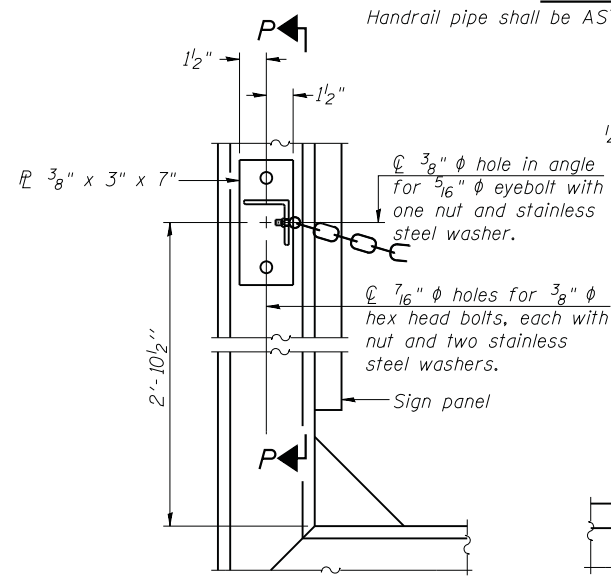
**DETAIL F**

**DETAIL G**

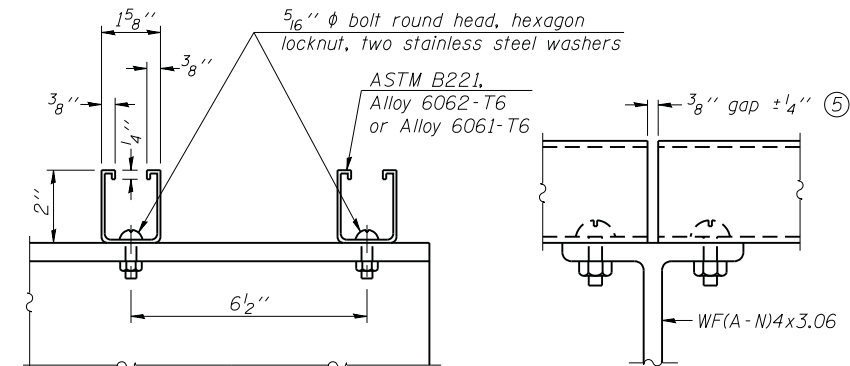
**HANDRAIL DETAILS**

Handrail pipe shall be ASTM B241 or B429, Alloy 6063-T6 or Alloy 6061-T6.

② Horizontal handrail member shall be continuous thru fitting. Provide 7/16" hole in fitting for 3/8" bolt. Field drill 7/16" hole in horizontal rail member. Provide locknut and two stainless steel washers for bolt. (Use 5/16" eyebolts in 7/16" holes on top rail at ends only.)



**ELEVATION AT HANDRAIL JOINT** ④  
Details not shown same as "FRONT ELEVATION"



**SECTION F-F**  
**SECTION G-G**  
**LIGHTING FIXTURE MOUNTS (IF REQUIRED)**

⑤ Field cut ends of light support channels shall be free of burrs or hazardous projections and coated with zinc-rich primer or equivalent.

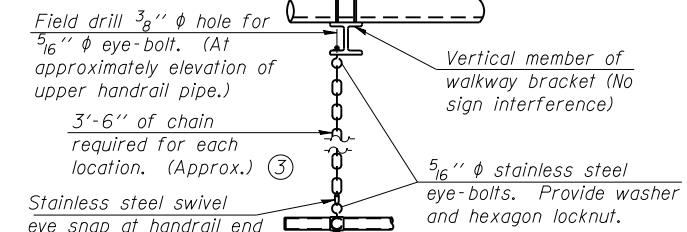
**ALTERNATE SAFETY CHAIN ATTACHMENT**  
(With Sign Present)

**SIDE ELEVATION**

**FRONT ELEVATION**

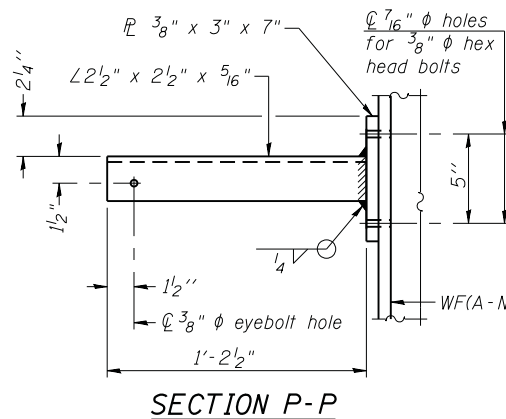
Items not shown same as "Side Elevation" of "Handrail Details"

Details not shown same as "ELEVATION" at right.

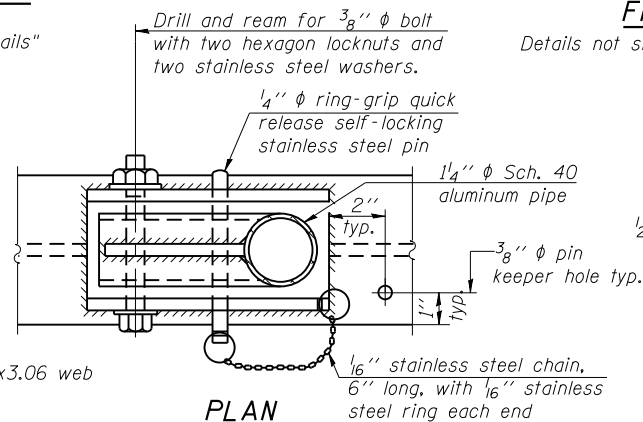


**SAFETY CHAIN**

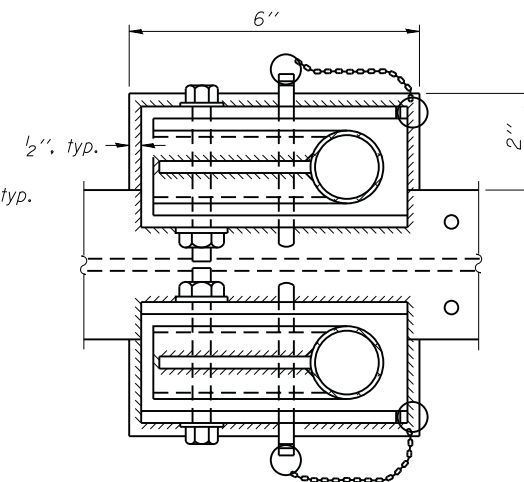
One required for each end of each walkway.



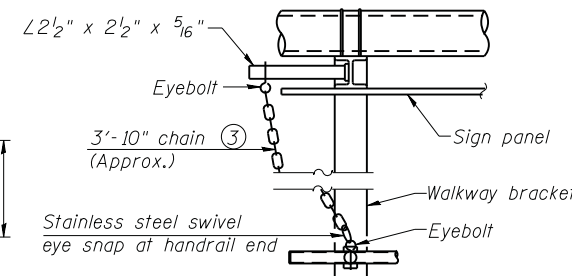
**SECTION P-P**



**PLAN**  
**DETAIL E HANDRAIL HINGE**



**PLAN AT HANDRAIL JOINT**  
Details not shown same as "PLAN"



**ALTERNATE SAFETY CHAIN ATTACHMENT**  
Details not shown similar to "Safety Chain" Details (Walkway omitted for clarity)

③ 3/16" Type 304L stainless steel chain, approximately 12 links per foot.

④ Extrusions may be used in lieu of the details shown, with approval of the Engineer.

COMPANY NAME: HRGreen.com  
PROJECT CONTACT: Illinois Professional Design Firm #184-001322  
DATE PLOTTED: 5/17/2012 14:42:24 PM  
FILE NAME: 8610019611-sign-08.dgn  
PLOT DRIVER: pdfcut  
PEN TABLE: Struct 22x34.tbl

OSC-A-8

9-15-11



USER NAME = mhardin	DESIGNED - J. GUERRIERO	REVISED -
PLOT SCALE = N/A	DRAWN - J. GUERRIERO	REVISED -
PLOT DATE = 5/17/2012	CHECKED - R. DAVIES	REVISED -
	DATE - 5/17/12	REVISED -

STATE OF ILLINOIS  
DEPARTMENT OF TRANSPORTATION

CANTILEVER SIGN STRUCTURES - HANDRAIL DETAILS  
ALUMINUM TRUSS & STEEL POST

SCALE: N/A SHEET NO. OF SHEETS STA. TO STA.

F.A. RTE. 332	SECTION 2011-073-T	COUNTY COOK	TOTAL SHEETS 44	SHEET NO. 23
FED. ROAD DIST. NO. ILLINOIS FED. AID PROJECT			CONTRACT NO. 60P93	