

TYPICAL TRUSS UNIT
(Sign and walkway omitted for clarity)

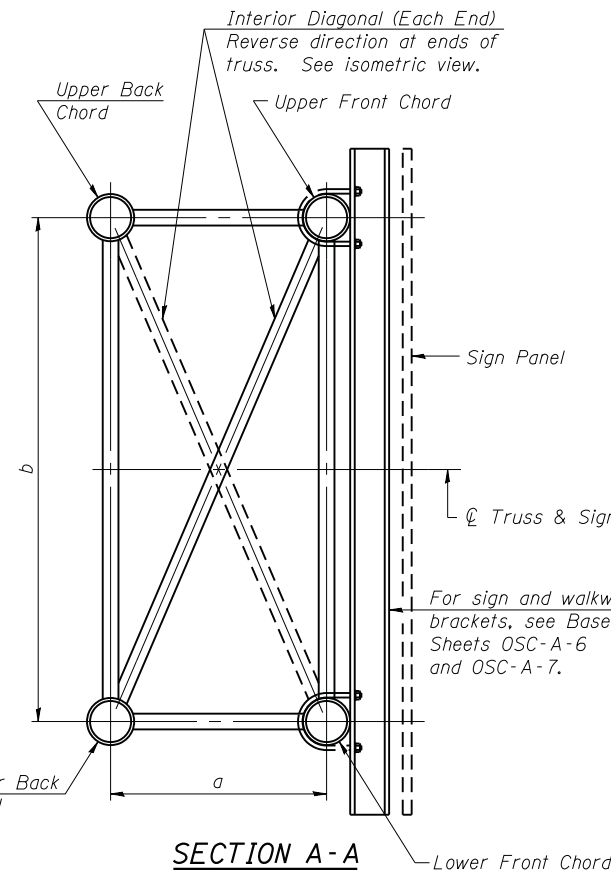
Note: For Section B-B and Section C-C, see Base Sheet OSC-A-3.
There are twice as many horizontal diagonals as there are vertical diagonals.

TRUSS UNIT TABLE

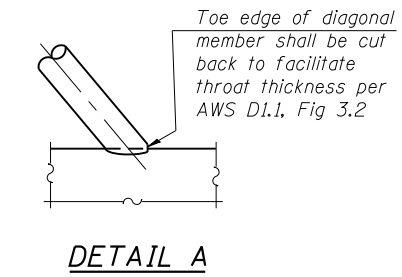
Truss Type	Dimension "a"	Dimension "b"	Dimension "s"	Limits for Panel Spacing (P)*	Up. & Low. Chord		Verticals; Horizontals; Vertical, Horizontal, and Interior Diagonals	
					O.D.	Wall	O.D.	Wall
I-C-A	24"	54"	16"	36" min. to 48" max.	5"	5/16"	2 1/2"	5/16"
II-C-A	36"	66"	21"	42" min. to 54" max.	6 1/2"	5/16"	3 1/4"	5/16"
III-C-A (35' Max.)	36"	84"	21"	48" min. to 66" max.	7"	3/8"	3 1/2"	3/8"
III-C-A (>35' to 40')	36"	84"	21"	48" min. to 66" max.	8"	3/8"	3 1/2"	3/8"

$$*P = \frac{L-s-3''}{\# \text{ Panels}}$$

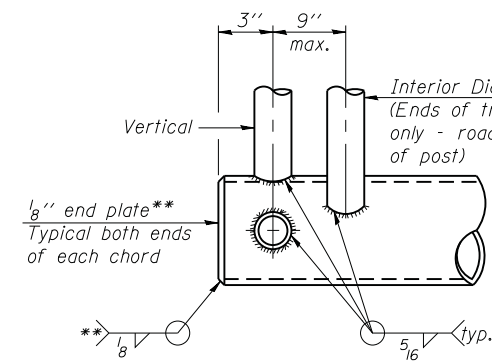
Structure Number	Station	Truss Type	Design Length (L)	Number of Panels Per Unit	Panel Length (P)*
1C016394L000.0-001	124+60.00 LT	III-C-A	40'-0"	8	60"



SECTION A-A

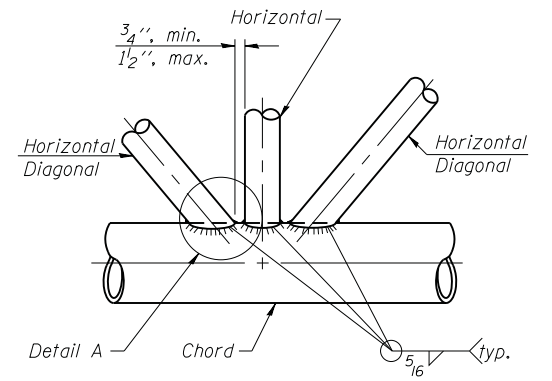


DETAIL A

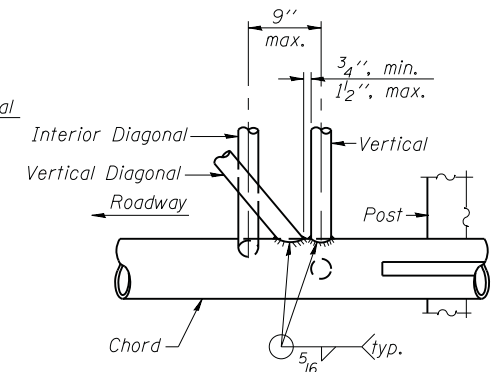


CANTILEVER END JOINT DETAIL

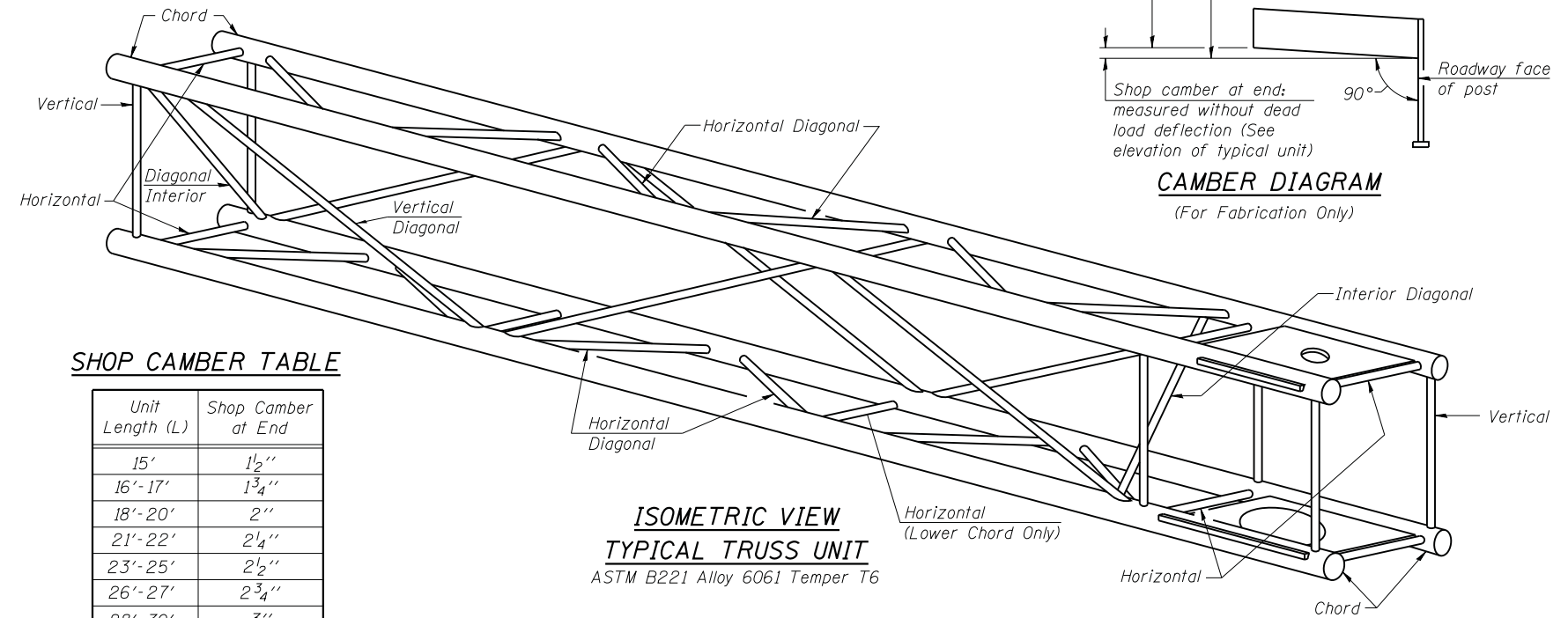
** Contractor may alternatively use standard aluminum drive-fit cap to close ends.



TRUSS INTERIOR JOINT DETAIL



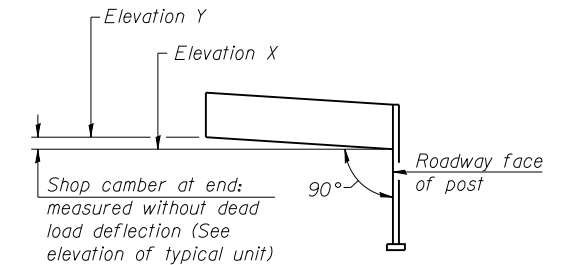
POST END JOINT DETAIL



**ISOMETRIC VIEW
TYPICAL TRUSS UNIT**
ASTM B221 Alloy 6061 Temper T6

SHOP CAMBER TABLE

Unit Length (L)	Shop Camber at End
15'	1 1/2"
16'-17'	1 3/4"
18'-20'	2"
21'-22'	2 1/4"
23'-25'	2 1/2"
26'-27'	2 3/4"
28'-30'	3"
31'-32'	3 1/4"
33'-35'	3 1/2"
36'-37'	4"
38'-40'	4 1/2"



CAMBER DIAGRAM
(For Fabrication Only)

OSC-A-2

9-15-11



HRGreen.com
Illinois Professional Design Firm
#184-001322
USER NAME = mhardin
PLOT SCALE = N/A
PLOT DATE = 5/17/2012

DESIGNED - J. GUERRIERO
DRAWN - J. GUERRIERO
CHECKED - R. DAVIES
DATE - 5/17/12
REVISED -
REVISED -
REVISED -
REVISED -

STATE OF ILLINOIS
DEPARTMENT OF TRANSPORTATION

CANTILEVER SIGN STRUCTURES - TRUSS DETAILS
ALUMINUM TRUSS & STEEL POST

SCALE: N/A SHEET NO. OF SHEETS STA. TO STA.

F.A. RTE.	SECTION	COUNTY	TOTAL SHEETS	SHEET NO.
332	2011-073-T	COOK	44	15
CONTRACT NO.			60P93	
FED. ROAD DIST. NO. ILLINOIS FED. AID PROJECT				

COMPANY NAME: #COMPANY.NAMES
PROJECT CONTACT:
5/17/2012 1:46:54 PM
DATE PLOTTED: 86100196.11-sign-02.dgn
FILE NAME: default
PLOT DRIVER: pafact
PEN TABLE: Struct 22x34.tbl
C:\91-631-11
86100196.11-sign-02.dgn