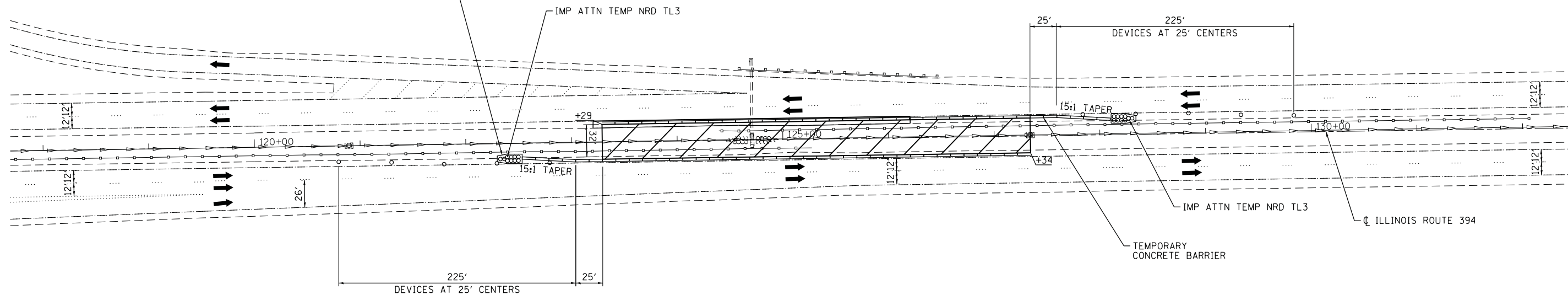
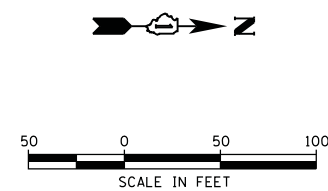


BASES FOR IMPACT ATTENUATORS SHALL BE CONSTRUCTED ACCORDING TO THE MANUFACTURER'S GUIDELINES AND SPECIFICATIONS. COST INCLUDED IN THE COST OF IMPACT ATTENUATOR, TEMPORARY (NON-DIRECTIVE), TEST LEVEL 3 (TYP.)



NOTE:  
SEE DISTRICT 1 DETAIL TC-17 FOR TYPICAL SIGNAGE

LEGEND:	
	WORK ZONE
	DIRECTION OF TRAFFIC
	TEMPORARY CONCRETE BARRIER
	TYPE II BARRICADES OR DRUMS WITH STEADY BURNING LIGHTS
	IMPACT ATTENUATOR



COMPANY NAME: HRGreen  
 PROJECT CONTACT: J. GUERRIERO  
 DATE PLOTTED: 5/17/2012 2:28:18 PM  
 FILE NAME: 86100196.11-mot-01.dgn  
 PLOT DRIVER: pafach  
 PEN TABLE: Struct\_22x34.tbl



USER NAME = mhardin	DESIGNED - C. HARTKE	REVISED -
	DRAWN - J. GUERRIERO	REVISED -
PLOT SCALE = 1"=50'	CHECKED - T. HAMILTON	REVISED -
PLOT DATE = 5/17/2012	DATE - 5/17/12	REVISED -

**STATE OF ILLINOIS  
DEPARTMENT OF TRANSPORTATION**

SUGGESTED MAINTENANCE OF TRAFFIC ILLINOIS ROUTE 394	
SCALE: 1"=50'	SHEET NO. 1 OF 1 SHEETS
STA. BEG	TO STA. END

F.A. RTE.	SECTION	COUNTY	TOTAL SHEETS	SHEET NO.
332	2011-073-T	COOK	44	9
CONTRACT NO.			60P93	
FED. ROAD DIST. NO. ILLINOIS FED. AID PROJECT				