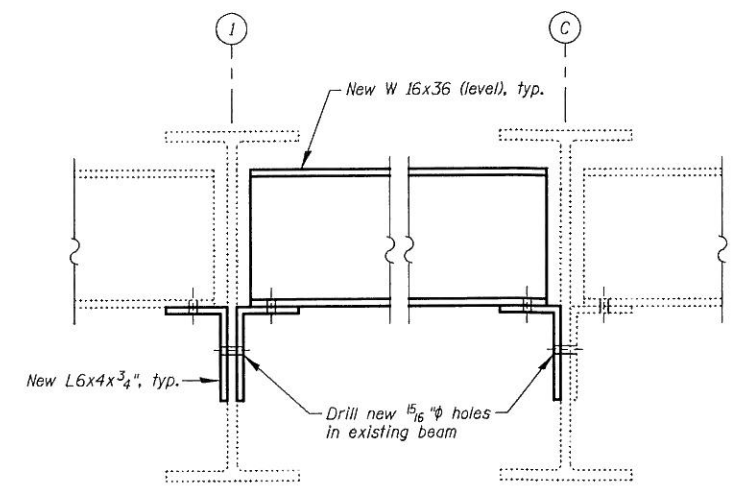
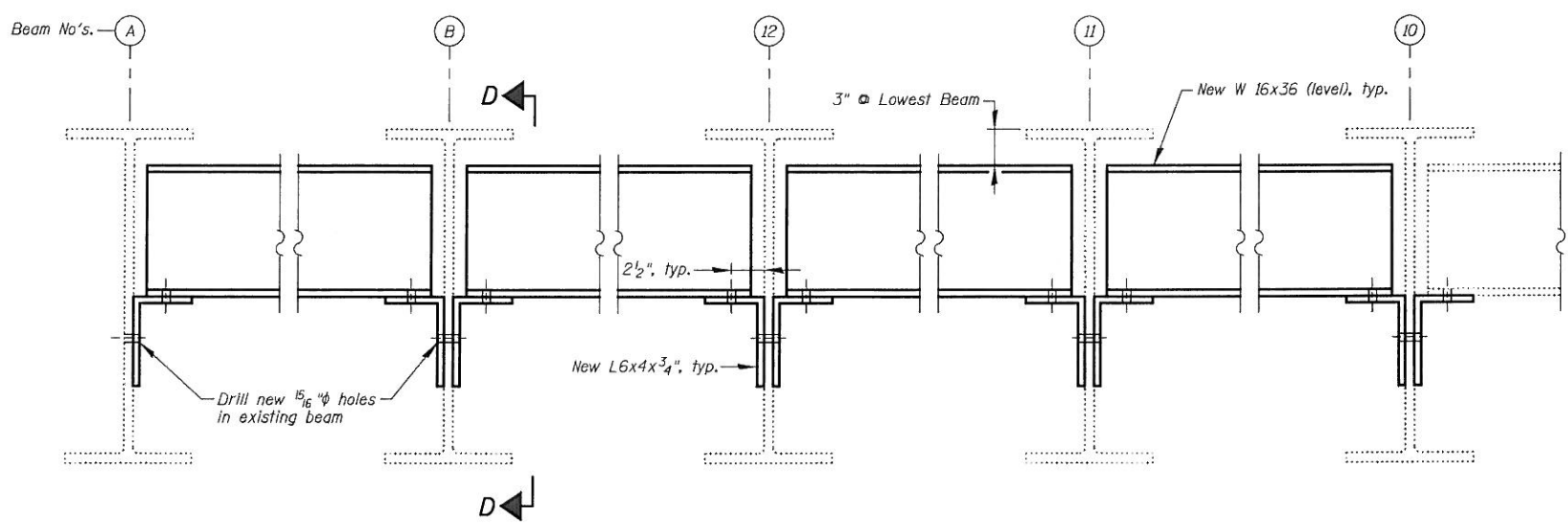


**EXISTING END DIAPHRAGMS AT EAST ABUTMENT  
(Looking East)**

**LEGEND:**  
 Structural Steel Removal



**PROPOSED END DIAPHRAGMS AT EAST ABUTMENT  
(Looking East)**

Note:  
 Two hardened washers required for all 1 5/16" phi holes for diaphragm connections.

NOTE:  
 SEE SHEET S13 FOR SECTIONS A-A, B-B, C-C & D-D AND BILL OF MATERIAL

FILE NAME = I:\102915\_Touhy\_Ave\Structural\CADD Sheets\16072-14-repair\_e-abut.dgn

**CHRISTIAN-ROGE & ASSOCIATES, INC.**

USER NAME = IDOT	DESIGNED - J.C.N./B.N.S.	REVISED -
PLOT SCALE = 50.0000' / IN.	CHECKED - B.N.S./J.C.N.	REVISED -
PLOT DATE = 5/14/2012	DRAWN - F.M.	REVISED -
	DATE - JANUARY 6, 2012	REVISED -

**STATE OF ILLINOIS  
DEPARTMENT OF TRANSPORTATION**

**STRUCTURAL STEEL REPAIRS—EAST ABUTMENT  
STRUCTURE NO. 016-0713**

SHEET NO. S14 OF S21 SHEETS

F.A.I. RTE.	SECTION	COUNTY	TOTAL SHEETS	SHEET NO.
94	0304, 1 HB-1-2	COOK	44	25
				CONTRACT NO. 60P72
ILLINOIS FED. AID PROJECT				