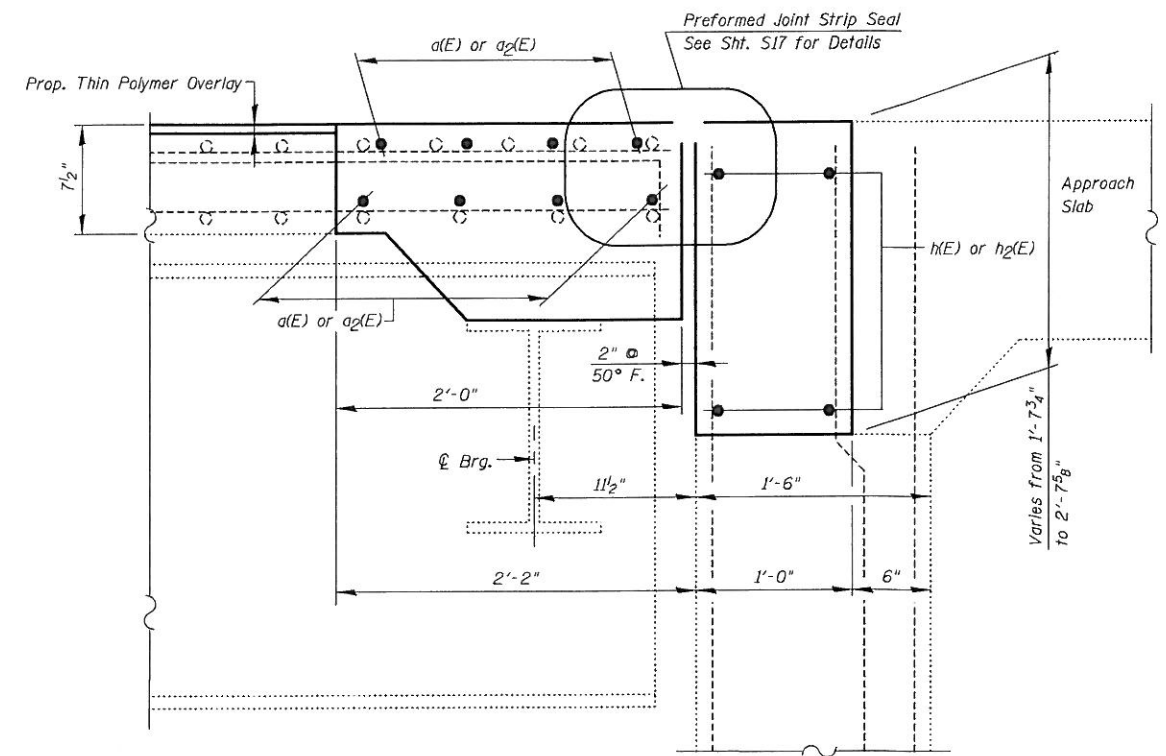


**EXISTING**  
**SECTION E-E**

**LEGEND:**

Concrete Removal



**PROPOSED**  
**SECTION E-E**

**EAST ABUTMENT**

Note:  
For Bar Splicer Assembly Details, See Sht. S16

FILE NAME = I:\102915\_Touhy-Ave\Structural\CADD Sheets\160P72-11-1t-recon-east-abut-III.dgn



USER NAME = IDOT	DESIGNED - J.C.N./B.N.S.	REVISED -
PLOT SCALE = 49.999968 "/ IN.	CHECKED - B.N.S./J.C.N.	REVISED -
PLOT DATE = 5/14/2012	DRAWN - F.M.	REVISED -
	DATE - JANUARY 6, 2012	REVISED -

**STATE OF ILLINOIS**  
**DEPARTMENT OF TRANSPORTATION**

**JOINT RECONSTRUCTION DETAILS AT EAST ABUTMENT-III**  
**STRUCTURE NO. 016-0713**

SHEET NO. S11 OF S21 SHEETS

F.A.I. RTE.	SECTION	COUNTY	TOTAL SHEETS	SHEET NO.
94	0304, 1 HB-1-2	COOK	44	22
CONTRACT NO. 60P72				
ILLINOIS FED. AID PROJECT				