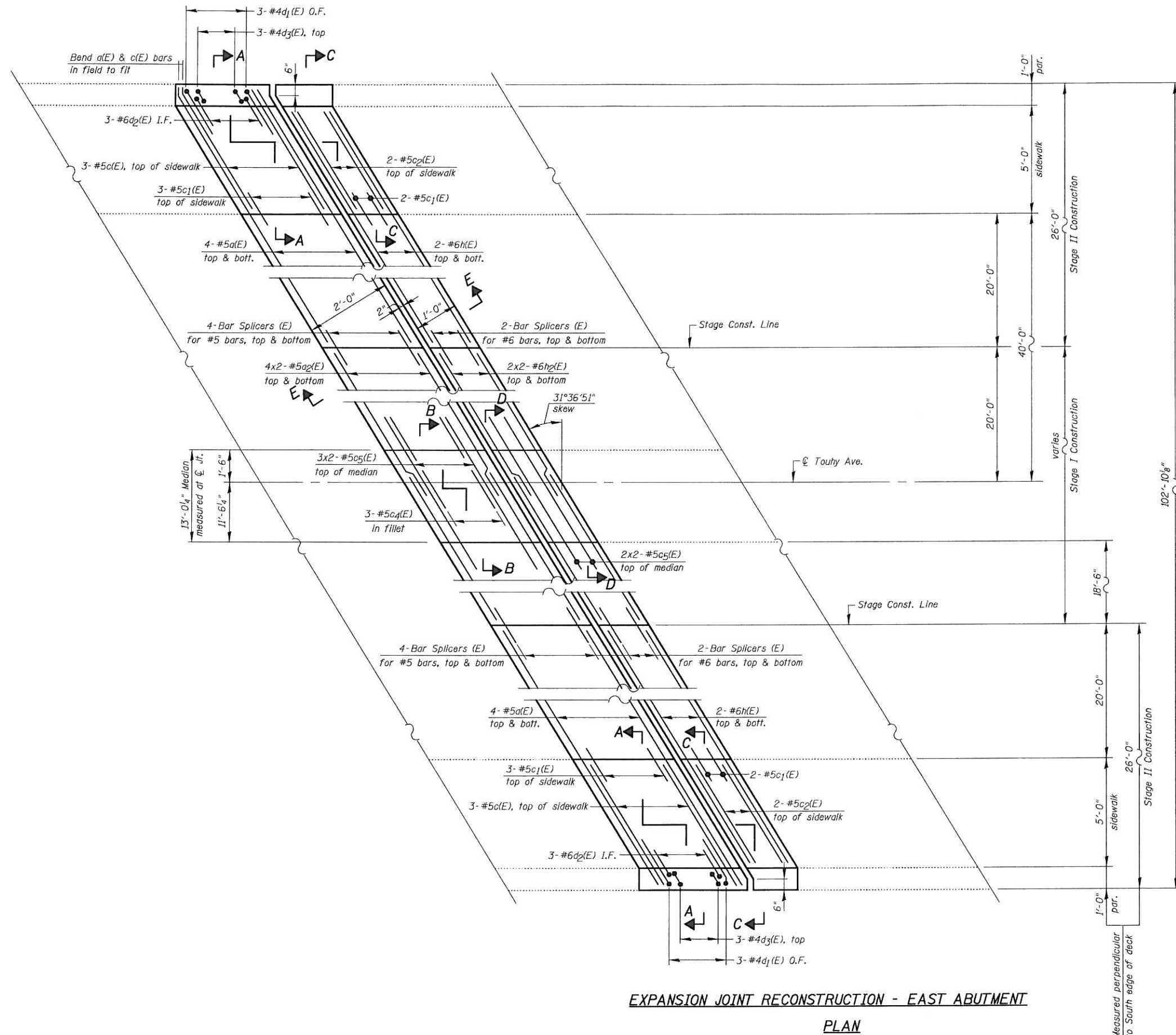
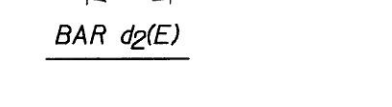
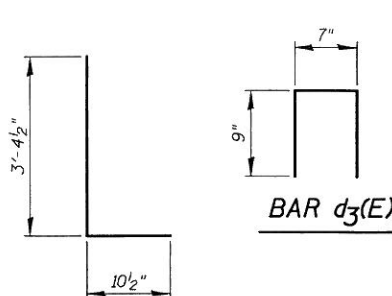
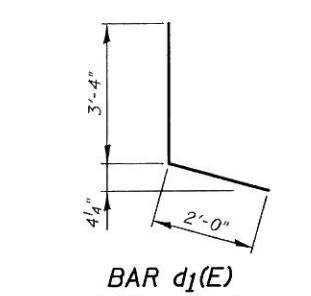
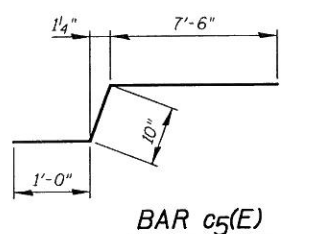
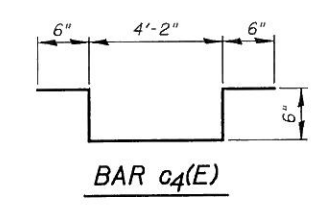
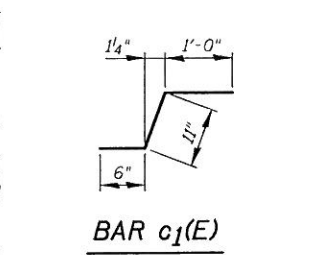


FILE NAME = I:\102915_Touhy Ave Structural\CADD Sheets\102915_Touhy Ave Struct-est_abut-1.dgn



EXPANSION JOINT RECONSTRUCTION - EAST ABUTMENT
PLAN



BILL OF MATERIAL				
Bar	No.	Size	Length	Shape
a1(E)	16	#5	30'-1"	—
a2(E)	16	#5	30'-9"	—
c1(E)	6	#5	6'-7"	—
c1(E)	10	#5	2'-5"	┘
c2(E)	4	#5	5'-4"	—
c4(E)	3	#5	6'-2"	┘
c5(E)	10	#5	9'-4"	┘
d1(E)	6	#4	5'-4"	┘
d2(E)	6	#6	4'-3"	┘
d3(E)	6	#4	2'-1"	┘
h(E)	8	#6	29'-0"	—
h2(E)	8	#6	31'-0"	—
Reinforcement Bars, Epoxy Coated	Pound		2,010	
Concrete Removal	Cu Yd		22.0	
Concrete Superstructure	Cu Yd		22.0	
Bar Splicers	Each		24	

Note:
Eastbound lanes are slightly skewed, however, because of the exaggeration of the horizontal and the vertical scales, this plan shows the lanes straight for clarity. See General Plan & Elevation, Sht. S1.

LEGEND:
O.F. = Outside Face
I.F. = Inside Face

MIN. BAR LAP:
#5 bars = 2'-2"
#6 bars = 2'-7"

NOTES:
See Sht. S10 for Sections A-A, B-B, C-C & D-D.
See Sht. S11 for Section E-E.