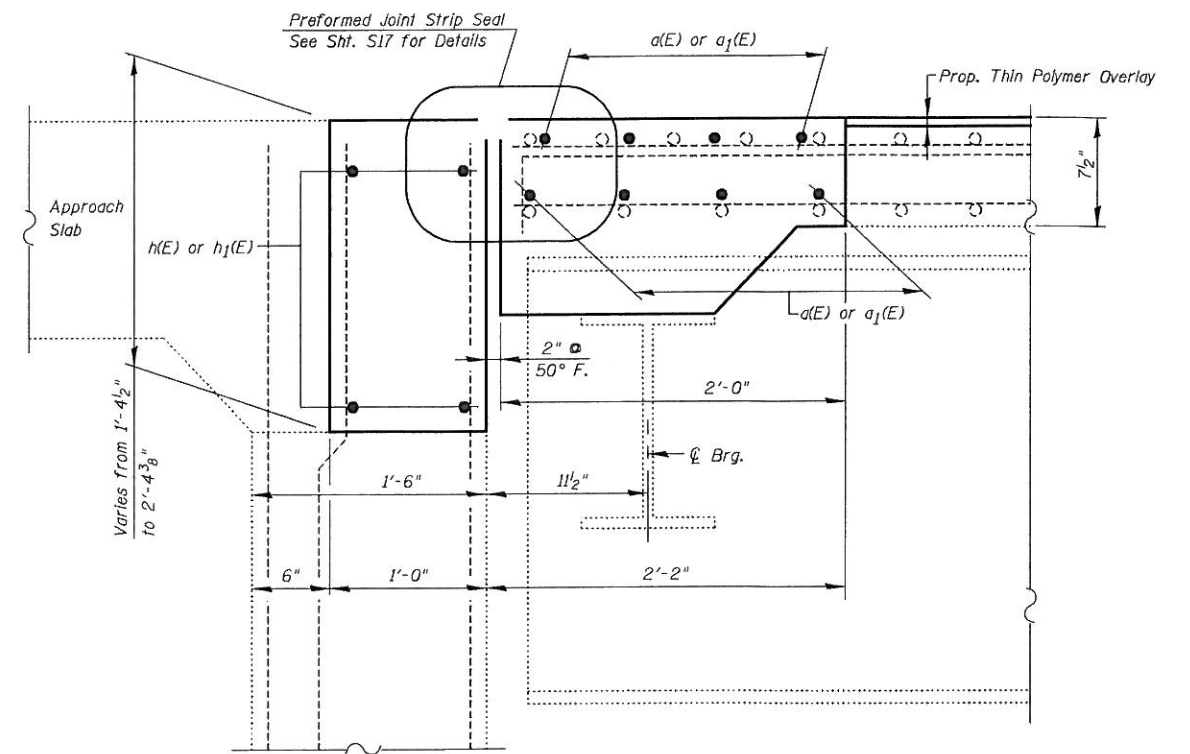


EXISTING
SECTION E-E

LEGEND:

Concrete Removal



PROPOSED
SECTION E-E

WEST ABUTMENT

Note:
For Bar Splicer Assembly Details, See Sht. S16

FILE NAME = I:\102915_Touhy-Ave\Structural\CADD Sheets\102915-08-1-1-recon_west_abut-III.dgn



USER NAME = IDDT	DESIGNED - J.C.N./B.N.S.	REVISED -
PLOT SCALE = 49.999968" / IN.	CHECKED - B.N.S./J.C.N.	REVISED -
PLOT DATE = 5/14/2012	DRAWN - F.M.	REVISED -
	DATE - JANUARY 6, 2012	REVISED -

STATE OF ILLINOIS
DEPARTMENT OF TRANSPORTATION

JOINT RECONSTRUCTION DETAILS AT WEST ABUTMENT-III
STRUCTURE NO. 016-0713

SHEET NO. 08 OF 21 SHEETS

F.A.I. RTE.	SECTION	COUNTY	TOTAL SHEETS	SHEET NO.
94	0304, 1 HB-1-2	COOK	44	19
				CONTRACT NO. 60PT2
ILLINOIS FED. AID PROJECT				