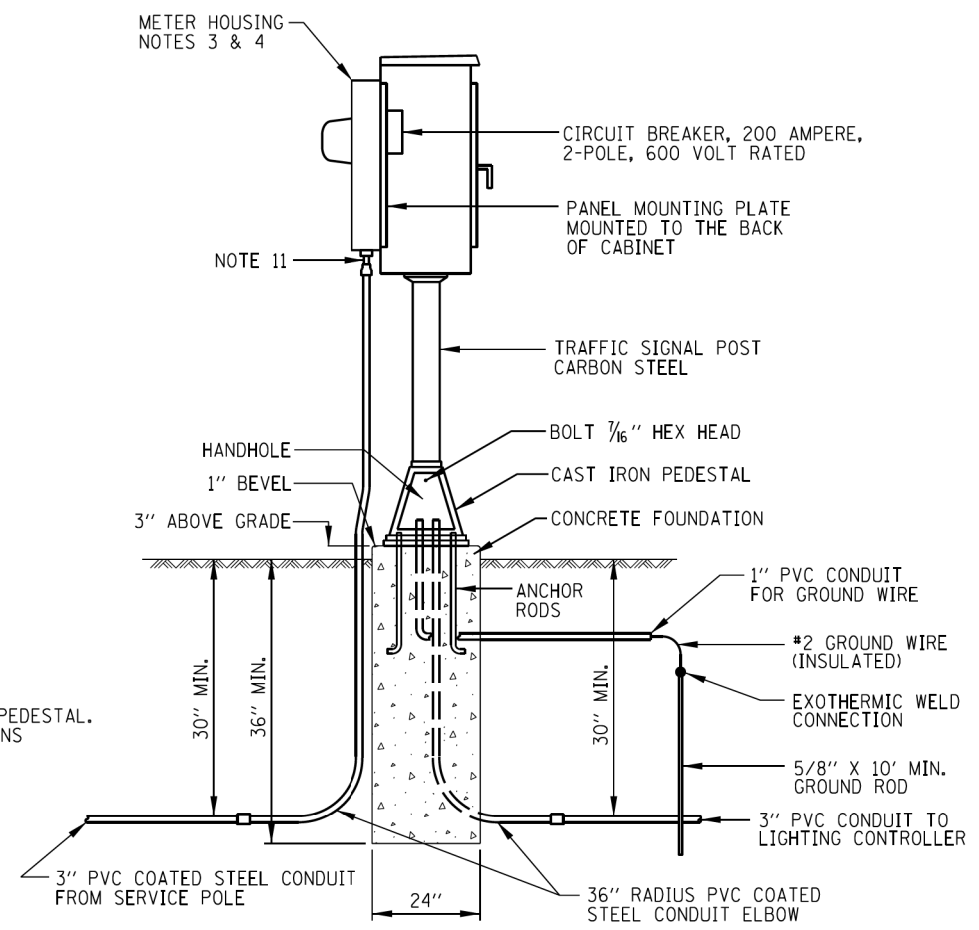
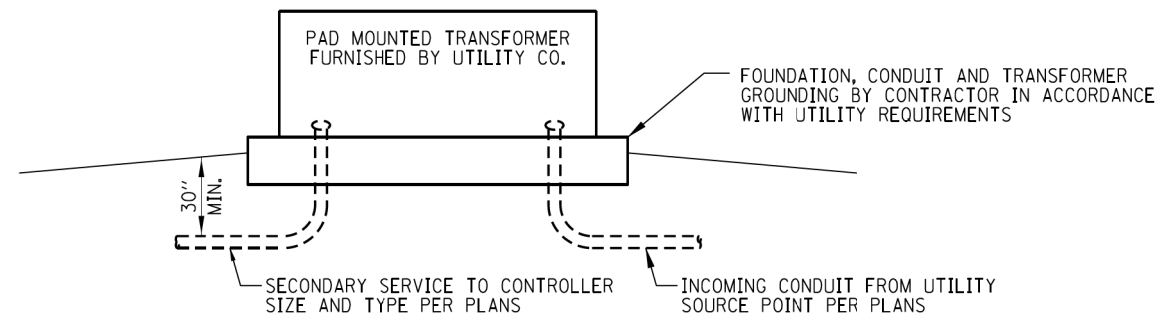


UTILITY SERVICE POLE
SUBJECT TO UTILITY COMPANY APPROVAL
NO SCALE



SERVICE PEDESTAL WITH METER DETAIL
NO SCALE (NOTE 9)



PAD MOUNTED TRANSFORMER
SUBJECT TO UTILITY COMPANY APPROVAL
NO SCALE

Paul Kovacs
APPROVED..... CHIEF ENGINEER..... DATE 2-7-2012...

- NOTES:**
- CABINETS, CABINET POSTS AND CABINET PEDESTALS SHALL BE PRIMED AND PAINTED. THE EXTERIOR SHALL HAVE TWO EPOXY FINISH COATS OF ANSI-61 GRAY. THE INTERIOR SHALL BE PAINTED WHITE.
 - METER HOUSING SHALL BE MOUNTED TO BACK WALL OF CONTROL CABINET. PROVIDE A GATE IN ROW FENCE TO ALLOW UTILITY ACCESS TO READ THE METER.
 - CABLES FROM METER HOUSING SHALL PASS THROUGH BACK WALL OF CONTROL CABINET.
 - METER HOUSING SHALL BE MILBANK CATALOG NUMBER U8949.
 - THE CABINET SHALL BE 36"H x 20"W x 15"D, FABRICATED FROM ALUMINUM WITH A MINIMUM THICKNESS OF .125", RATED NEMA TYPE 3R AND HAVE A MOUNTING BACK PLATE.
 - THE CABINET DOOR SHALL HAVE A CONTINUOUS HINGE THAT IS BOLTED TO THE CABINET AND DOOR WITH 1/4-20 STAINLESS STEEL CARRIAGE BOLTS AND NY-LOCK NUTS. THE HINGE SHALL BE INSTALLED ON THE RIGHT SIDE WHEN FACING THE CABINET AND BE MADE OF STAINLESS STEEL WITH A 0.25 INCH DIAMETER STAINLESS STEEL HINGE PIN. THE HINGE PIN SHALL BE CAPPED TOP AND BOTTOM BY WELD TO RENDER IT TAMPER-PROOF. THE CABINET SHALL HAVE A GASKET THAT FORMS A WEATHER-TIGHT SEAL BETWEEN THE CABINET AND DOOR. THE DOOR LATCHING MECHANISM SHALL BE THE 3-POINT DRAW ROLLER TYPE. WHEN THE DOOR IS CLOSED AND LATCHED, IT WILL BE LOCKED. THE LATCHING HANDLE SHALL BE FABRICATED FROM A 0.75" STAINLESS STEEL ROUND BAR AND SHALL HAVE A PROVISION FOR PADLOCKING IN THE CLOSED POSITION.
 - THE ENCLOSURE SHALL BE EQUIPPED WITH TWO ADJUSTABLE "C" MOUNTING CHANNELS WELDED ON BOTH SIDE WALLS AND BACK WALL OF THE ENCLOSURE, ALLOWING VERSATILE POSITIONING OF SHELVES OR PANELS. MOUNTING CHANNELS SHALL BE FACTORY PAINTED SAME COLOR AS INTERIOR OF CABINET.
 - CABINET DOOR SHALL NOT HAVE COMPARTMENT DOORS OR LOUVERS.
 - THE CABINET, POST, PEDESTAL BASE, METER HOUSING, FOUNDATION, GROUND ROD, GROUND WIRE AND GROUND CONNECTIONS SHALL BE INCLUDED IN THE COST OF EACH ELECTRIC SERVICE INSTALLATION (PAY ITEM 80400100).
 - CONTRACTOR MUST COORDINATE WITH PEDESTAL BASE SUPPLIER AND FURNISH THE NECESSARY ANCHOR RODS.
 - PROVIDE A 2 1/2" CONDUIT HUB, 2 1/2" NIPPLE AND 2 1/2" TO 3" CONDUIT REDUCER FITTING.



DATE	REVISIONS	SERVICE POLE AND PEDESTAL DETAILS
2-7-2012	NEW SERVICE PEDESTAL DETAIL MODIFIED UTILITY SERVICE POLE	
		STANDARD H5-01

BOWMAN, BARRETT & ASSOCIATES INC.
CONSULTING ENGINEERS
Chicago, Illinois
312.228.0100
www.bbandainc.com

FILE NAME = \$FILES\$	USER NAME = default	DESIGNED -	REVISED -
		DRAWN -	REVISED -
		CHECKED - RGR	REVISED -
		DATE - 6/19/2012	REVISED -

STATE OF ILLINOIS
DEPARTMENT OF TRANSPORTATION

TOLLWAY STANDARD DRAWING	
SCALE:	SHEET NO. N/A OF N/A SHEETS STA. TO STA.

F.A. RTE.	SECTION	COUNTY	TOTAL SHEETS	SHEET NO.
94	49-1-R-1	LAKE	677	665
CONTRACT NO. 60L77				
ILLINOIS FED. AID PROJECT				

S:\1101\95\CADD\60L77_IL_175\60L77_Sheets\0160L77-INT-151TH.dgn