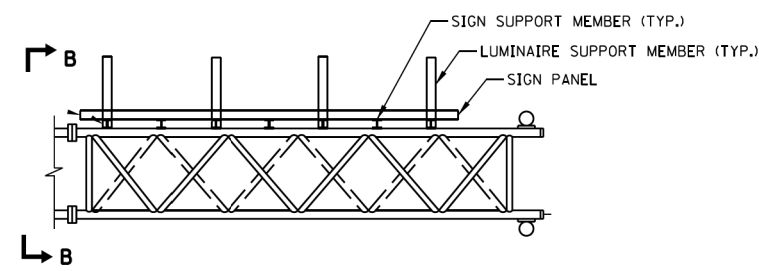
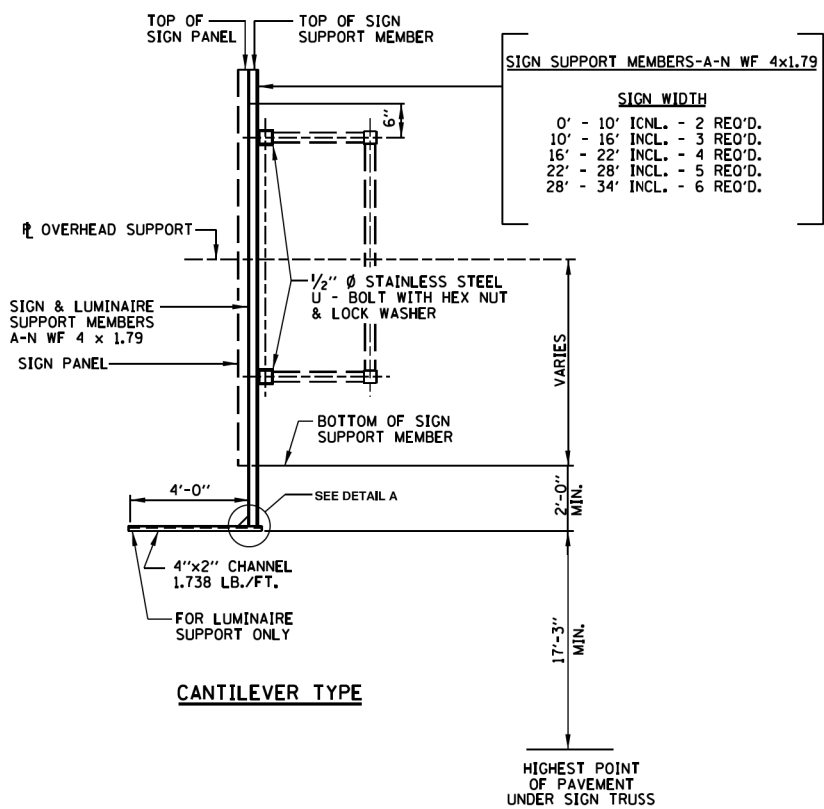


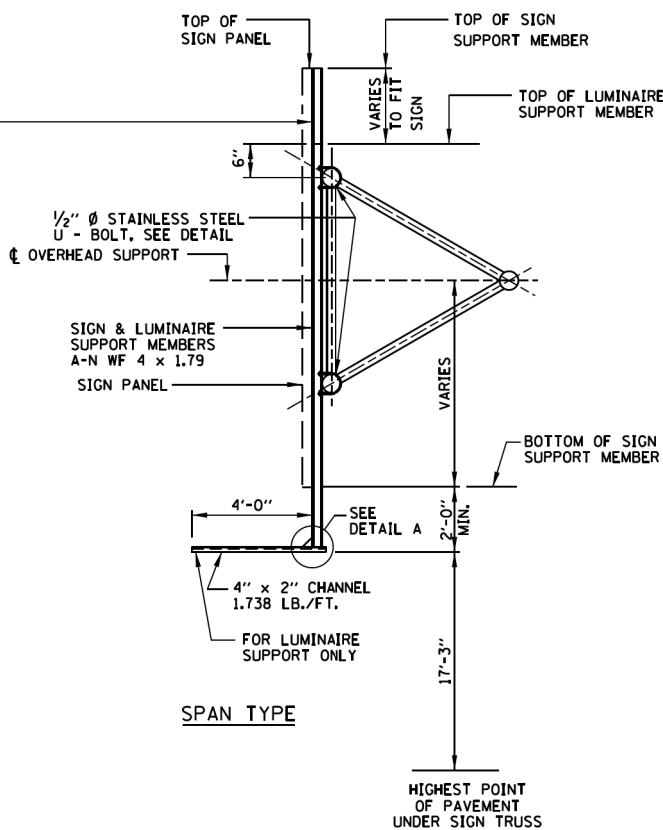
PLAN



PLAN



SECTION A-A

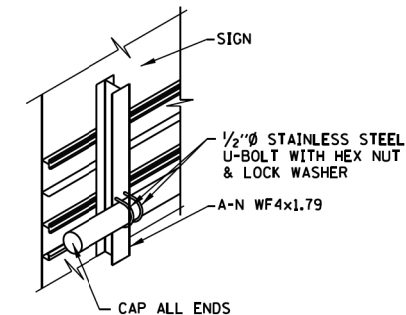


SECTION B-B

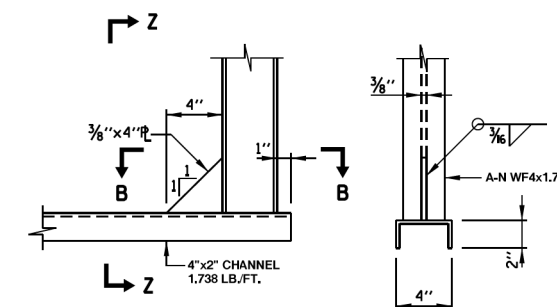
SIGN AND LUMINAIRE SUPPORT DETAIL

NOTE:

- SIGN PANEL SHALL BE ATTACHED TO TRUSS AS CLOSE TO PANEL JOINTS AS POSSIBLE.
- LUMINAIRE SUPPORT MEMBERS TO BE INSTALLED ONLY WHEN SIGN STRUCTURE IS TO BE ILLUMINATED. DESIGNER TO DETERMINE REQUIREMENTS BASED ON ROADWAY GEOMETRY.

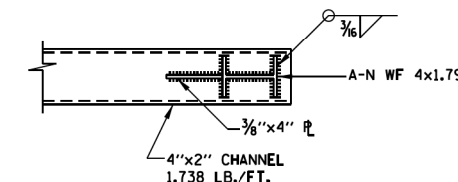


STAINLESS STEEL U-BOLT DETAIL



DETAIL A

SECTION Z-Z



SECTION B-B

NOTES:
ALL MATERIAL IS ALUMINUM (UNLESS OTHERWISE NOTED).

APPROVED *Paul Kovacs* CHIEF ENGINEER DATE 2-7-2012



DATE	REVISIONS
1-1-2009	ADDED PLAN VIEWS FOR SIGN STRUCTURES
2-7-2012	REVISED OVERHEAD SIGN STRUCTURE CANTILEVER DIAGONALS

OVERHEAD SIGN STRUCTURE
SIGN AND LUMINAIRE
SUPPORTS

STANDARD F8-02

BOWMAN, BARRETT & ASSOCIATES INC.
CONSULTING ENGINEERS
Chicago, Illinois
312.228.0100
www.bbandainc.com



FILE NAME = \$FILES\$	USER NAME = default
PLOT SCALE = H=1"=10' V=1"=5'	PLOT DATE = 6/18/2012

DESIGNED -	REVISD -
DRAWN -	REVISD -
CHECKED - RGR	REVISD -
DATE - 6/19/2012	REVISD -

STATE OF ILLINOIS
DEPARTMENT OF TRANSPORTATION

TOLLWAY STANDARD DRAWING

SCALE: SHEET NO. N/A OF N/A SHEETS STA. TO STA.

F.A. RTE.	SECTION	COUNTY	TOTAL SHEETS	SHEET NO.
94	49-1-R-1	LAKE	677	664
CONTRACT NO. 60L77				
ILLINOIS FED. AID PROJECT				

S:\1101\95\CADD\60L77_IL_175\60L77_Shts\151TH.dgn