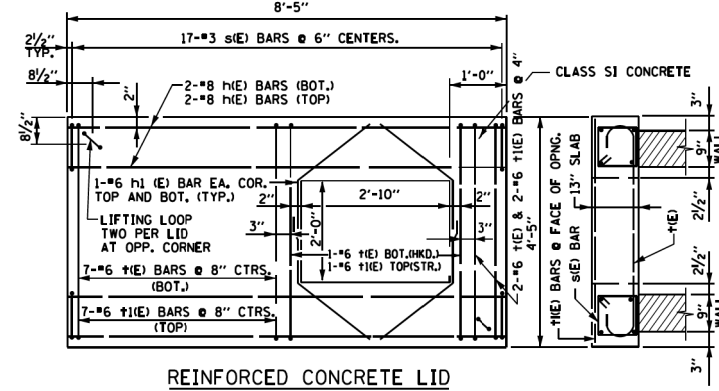


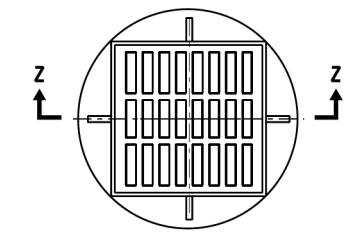
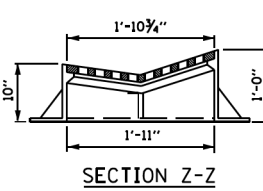
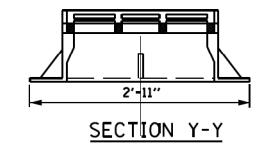
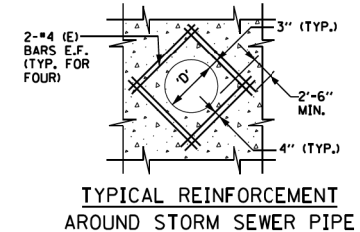
SECTION B-B
CATCH BASIN TYPE "G" SERIES

NOTE:
POSITION OF OPENING VARIES FROM 3'-2" TO 5'-4" MEASURED FROM BACK OF GUTTER LINE

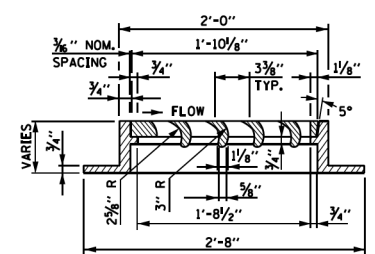


DRAINAGE STRUCTURE TYPE G-3, MODIFIED

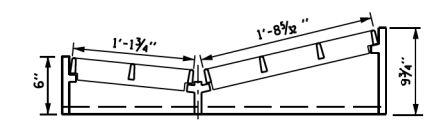
- NOTES:
1. PRECAST CONCRETE UNITS WILL BE ACCEPTABLE PROVIDED THEY MEET ALL THE REQUIREMENTS AS SHOWN ON THIS DRAWING. BASE EXTENSION OF 3" NOT REQUIRED FOR PRECAST UNITS. FABRICATION DRAWINGS SHOWING PIPE OPENINGS, REINFORCEMENT AND OTHER PERTINENT DIMENSIONS WILL BE REQUIRED FOR EACH UNIT, FOR APPROVAL BY THE ENGINEER PRIOR TO FABRICATION.
 2. CATCH BASINS TYPE G-SERIES SHALL BE USED IN THE SWALE ON THE HIGH SIDE OF SUPERELEVATED PAVEMENT.
 3. CATCH BASINS TYPE G-2 SHALL BE USED ALONG RAMP WHERE G-2 GUTTER IS PROVIDED.
 4. CATCH BASINS TYPE G-3 SHALL BE USED WHERE G-3 GUTTER IS PROVIDED.
 5. CATCH BASINS TYPE G-3 MODIFIED SHALL BE USED IN PAVEMENT SECTIONS AND ON THE LOW SIDE OF SUPERELEVATED PAVEMENT.
 6. CATCH BASINS TYPE G-3 MODIFIED SHALL BE PROVIDED WITH A REINFORCED CONCRETE SLAB TOP AS DETAILED ON THIS DRAWING.
 7. TYPE S FRAME AND GRATE SHALL BE NEENAH R-3338-F MODIFIED BY THE ADDITION OF THE FOURTH SIDE OF THE FRAME, OR APPROVED EQUAL.
 8. TYPE G-2 FRAME AND GRATE SHALL BE NEENAH R-3508-A2 OR APPROVED EQUAL.
 9. TYPE G-3 FRAME AND GRATE SHALL BE NEENAH INLET FOR ROLLTYPE CURB R-3501-U OR EAST JORDAN IRON WORKS 10004 OR APPROVED EQUAL.
 10. TYPE G-3, MODIFIED FRAME AND GRATE SHALL BE NEENAH INLET FOR ROLL TYPE CURB SPECIAL R-3501-UI OR APPROVED EQUAL.
 11. MORTAR OR SEALER SHALL BE USED WHEN A PRECAST REINFORCED CONCRETE LID IS USED.
 12. REINFORCEMENT BARS DESIGNATED (E) SHALL BE EPOXY COATED.



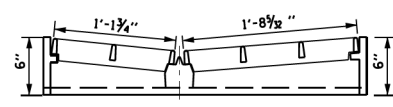
TYPE G-2 FRAME & GRATE



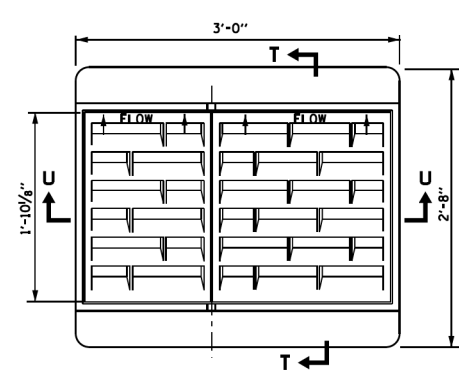
SECTION T-T



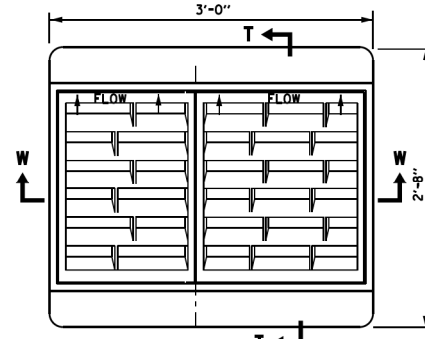
SECTION U-U



SECTION W-W



TYPE G-3 FRAME & GRATE



TYPE G-3, MODIFIED FRAME & GRATE

APPROVED: *Paul Kovacs*
CHIEF ENGINEER DATE 6-1-2009



| DATE | REVISIONS |
|----------|--|
| 6-1-2009 | DELETE REINF. CONC. LID TYPE S FRAME & GRATE |
| 2-7-2012 | REVISED REINFORCEMENT BARS |

CATCH BASINS TYPES G AND TYPE G MODIFIED, FRAMES AND GRATES TYPE G-2, G-3 & G-3 MODIFIED
STANDARD B8-02

BOWMAN, BARRETT & ASSOCIATES INC.
CONSULTING ENGINEERS
Chicago, Illinois
312.228.0100
www.bbadainc.com

| | | | |
|---------------------|-------------------------------|------------------|-----------|
| FILE NAME = #FILES# | USER NAME = default | DESIGNED - | REVISED - |
| | | DRAWN - | REVISED - |
| | PLOT SCALE = H=1"=10' V=1"=5' | CHECKED - RGR | REVISED - |
| | PLOT DATE = 6/18/2012 | DATE - 6/19/2012 | REVISED - |

STATE OF ILLINOIS
DEPARTMENT OF TRANSPORTATION

TOLLWAY STANDARD DRAWING

SCALE: SHEET NO. N/A OF N/A SHEETS STA. TO STA.

| | | | | |
|---------------------------|----------|--------|--------------|-----------|
| F.A. RTE. | SECTION | COUNTY | TOTAL SHEETS | SHEET NO. |
| 94 | 49-1-R-1 | LAKE | 677 | 622 |
| CONTRACT NO. 60L77 | | | | |
| ILLINOIS FED. AID PROJECT | | | | |

S:\1101\95\CADD\60L77 IL 175\60L77.dwg:151TH.dwg