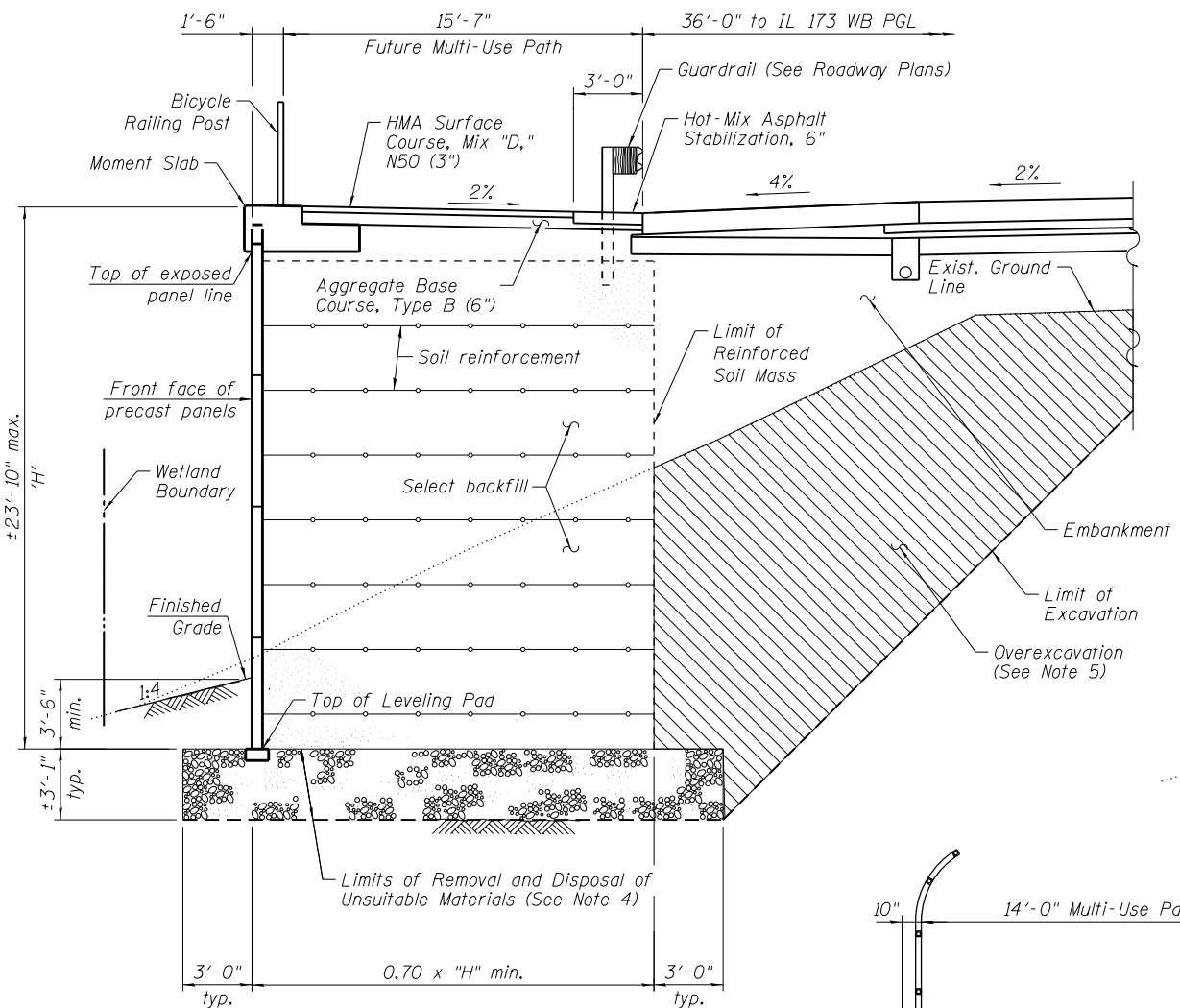
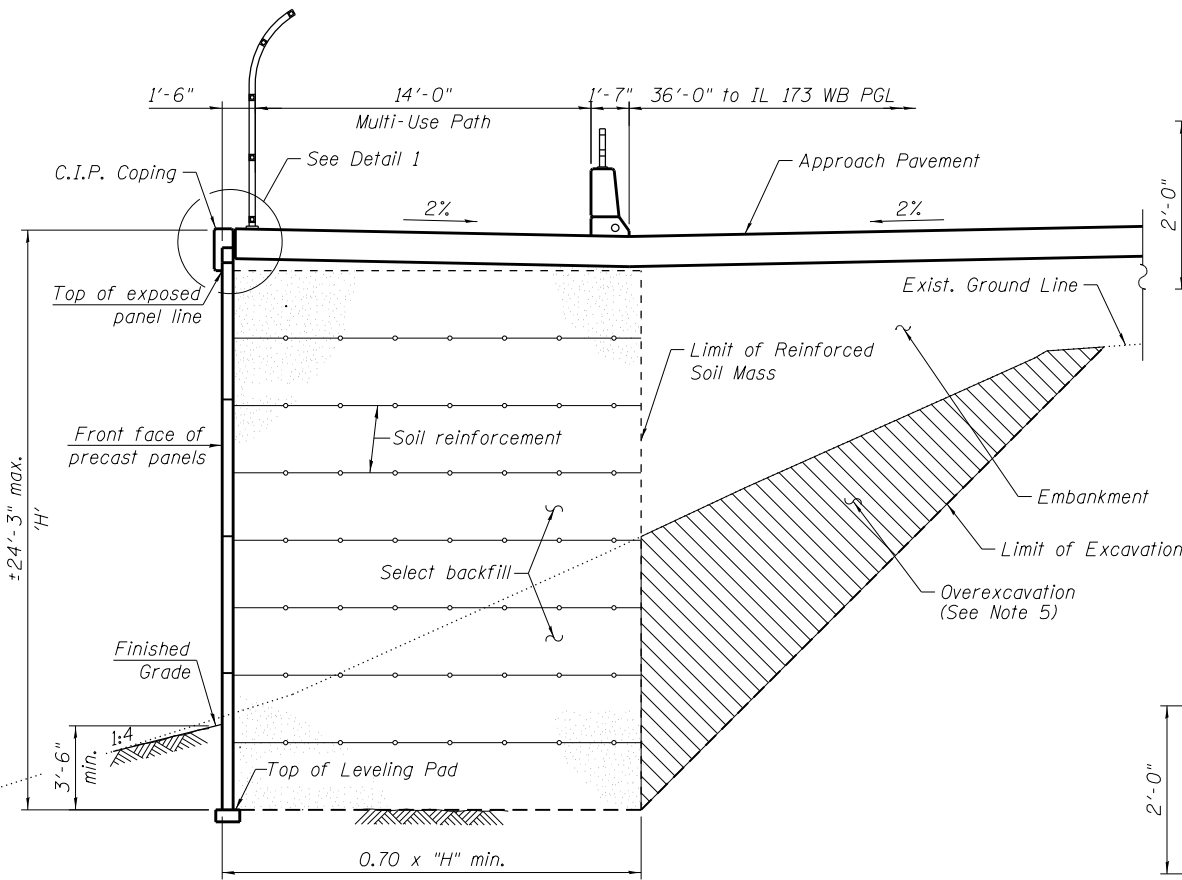


6/29/2012 9:32:32 AM

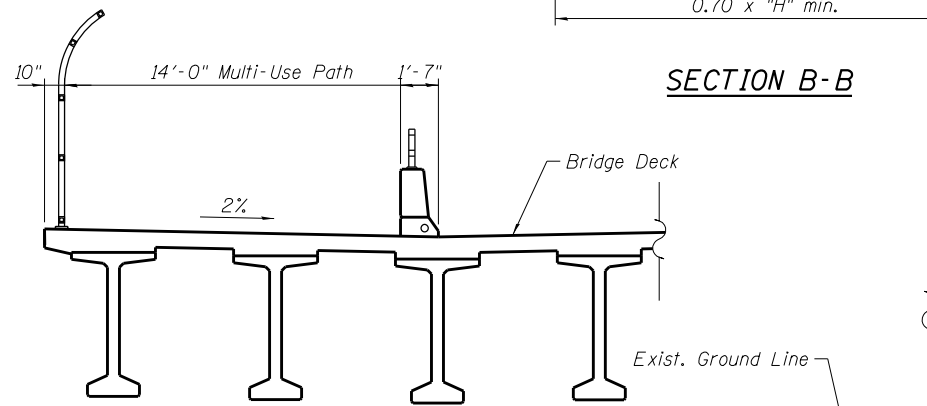
S:\101\05_CADD\60L77_IL_173\60L77_Sheets\049W045-60L77-002-DETL.dgn



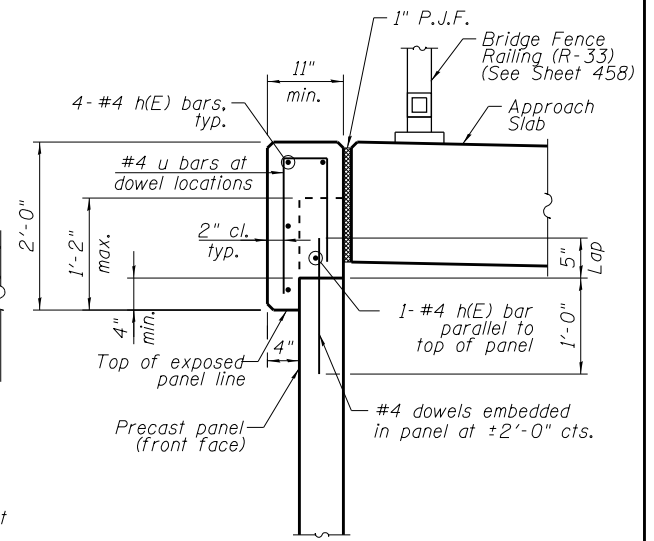
SECTION A-A



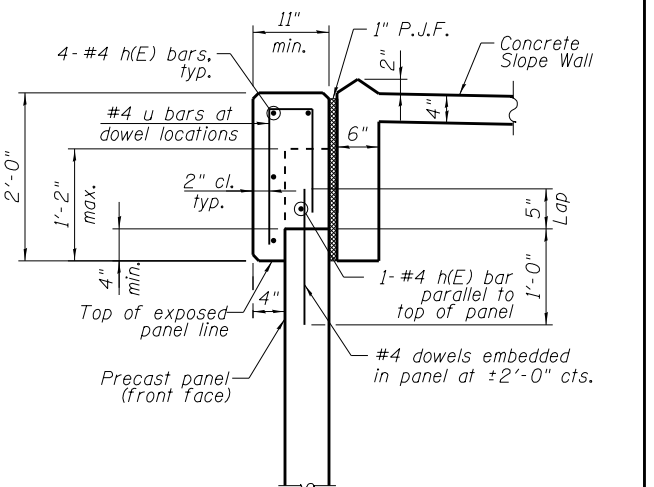
SECTION B-B



SECTION C-C



DETAIL 1



DETAIL 2

NOTES

1. Remove Unsuitable Materials as required and as directed by the Engineer.
2. MSE Wall supplier shall be responsible for design of precast wall panels & soil reinforcement.
3. Allowable Soil Bearing Capacity for the MSE Wall = 4 ksf. See MSE Wall Shop Drawings for equivalent uniform applied bearing pressure.
4. Backfill with select fill used in MSE Wall (cost included with MSE Retaining Wall).
5. Overexcavation beyond the limits of structure excavation. This area not measured for payment. Backfill overexcavation with same material as used for select fill.
6. Cost of furnishing and installing reinforcement bars in concrete coping and P.J.F.'s shall be included with "Mechanically Stabilized Earth Retaining Wall".

BILL OF MATERIAL

Item	Unit	Qty.
Removal and Disposal of Unsuitable Material	Cu. Yd.	1,200
Structure Excavation	Cu. Yd.	700
Mechanically Stabilized Earth Retaining Wall	Sq. Ft.	3,200

BOWMAN, BARRETT & ASSOCIATES INC.
CONSULTING ENGINEERS
Chicago, Illinois
312.228.0100
www.bbadainc.com

USER NAME =	DESIGNED - IYL	DATE - JUNE 27, 2012
PLLOT SCALE =	CHECKED - BLU	REVISED -
PLLOT DATE =	DRAWN - MTR	REVISED -
	CHECKED - IYL	REVISED -

STATE OF ILLINOIS
DEPARTMENT OF TRANSPORTATION

WALL DETAILS I
STRUCTURE NO. 049-W045

SHEET NO. S-2 OF S-6 SHEETS

F.A.I. RTE.	SECTION	COUNTY	TOTAL SHEETS	SHEET NO.
94	49-1-R-1	LAKE	677	476

CONTRACT NO. 60L77
ILLINOIS FED. AID PROJECT