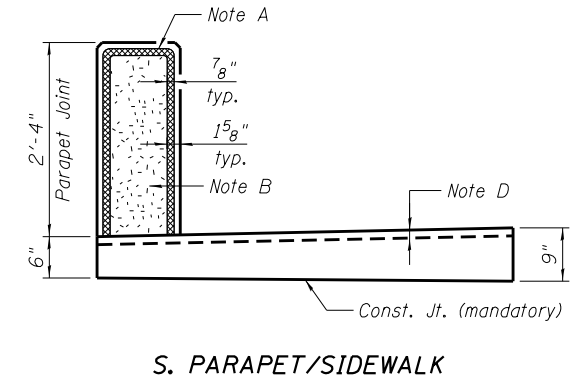
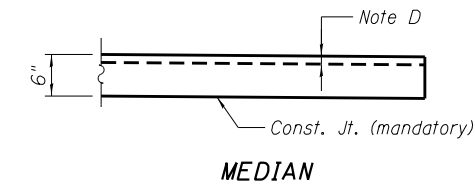
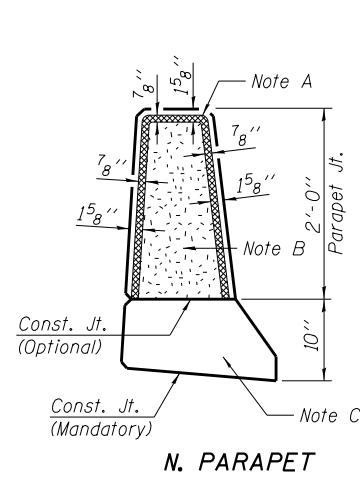
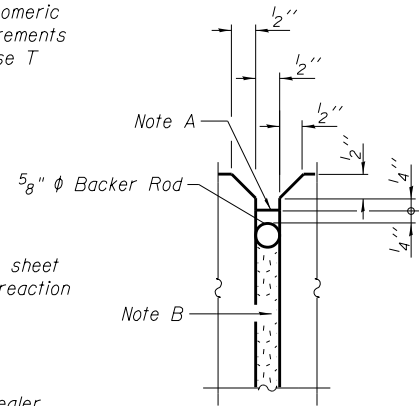


Note A:  
Non-staining gray one component non-sag elastomeric gun grade polyurethane sealant meeting the requirements of ASTM C-920, Type S, Grade NS, Class 25, use T with a 5/8" backer rod.

Note B:  
1/2" Preformed Self-Expanding Cork Joint Filler according to Article 1051.07 of the Std. Spec. Cost included with Concrete Superstructure.

Note C:  
Const. Jts. at Pier and Abutments 1/8" Aluminum sheet ASTM B 209 alloy 3003-H14 coated to minimize reaction with wet concrete. Cost included with Concrete Superstructure.

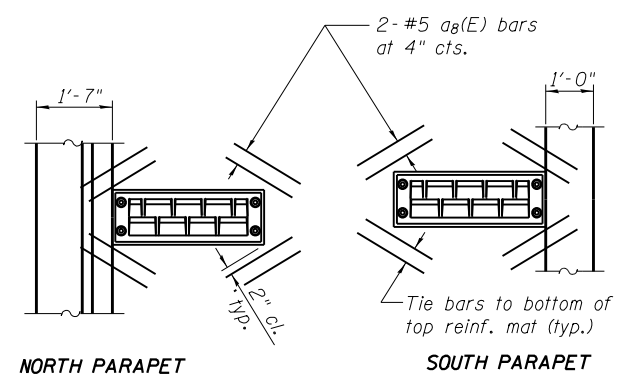
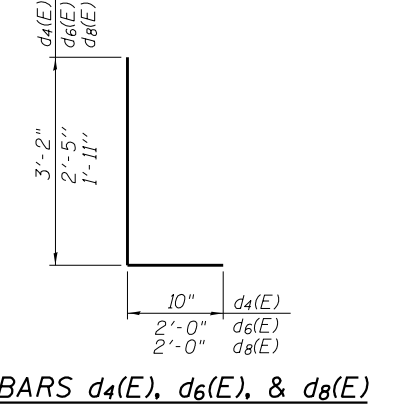
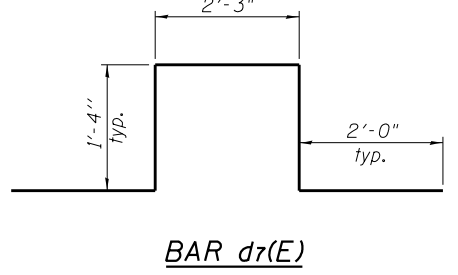
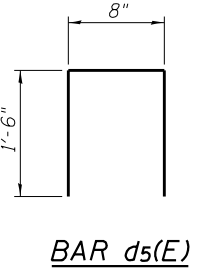
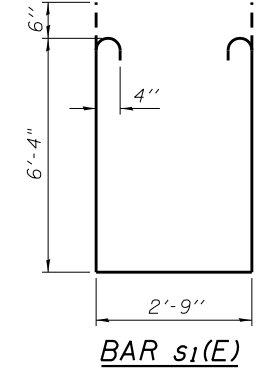
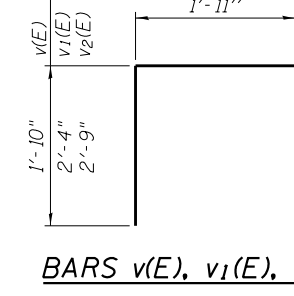
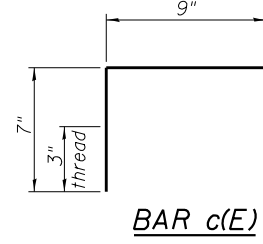
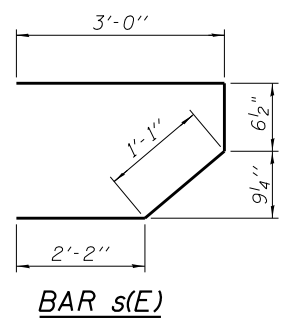
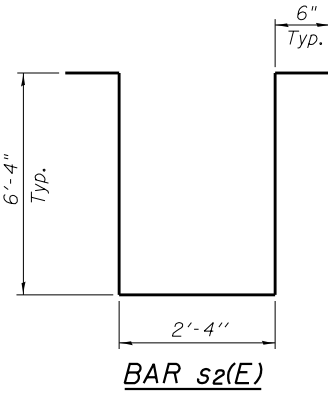
Note D:  
1/4"x3/4" Formed Joint with Bridge Relief Joint Sealer (See Special Provisions) at Pier and Abutments, full width along joint. Cost included with Concrete Superstructure.



**SUPERSTRUCTURE  
BILL OF MATERIAL**

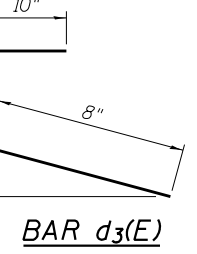
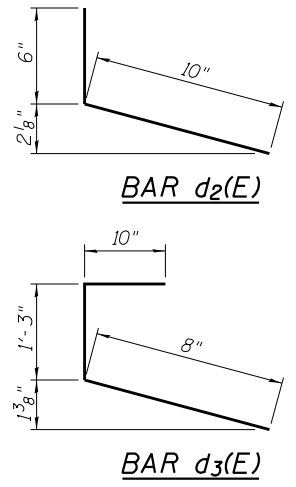
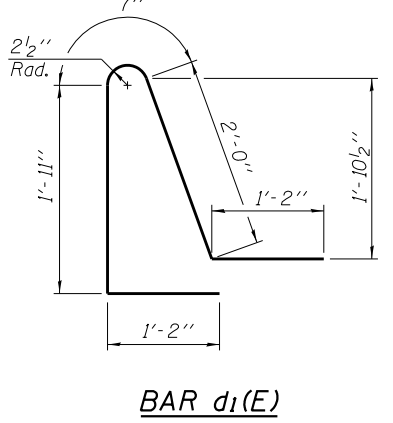
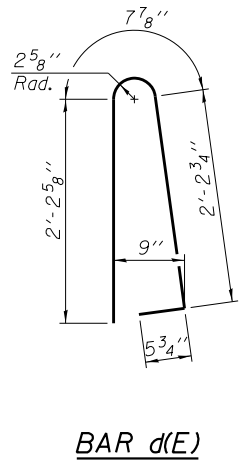
Bar	No.	Size	Length	Shape
a(E)	433	#5	51'-6"	—
a1(E)	303	#5	51'-3"	—
a2(E)	432	#6	14'-0"	—
a3(E)	866	#5	39'-2"	—
a4(E)	909	#5	27'-3"	—
a5(E)	432	#6	21'-6"	—
a6(E)	4	#5	52'-10"	—
a7(E)	8	#5	40'-2"	—
a8(E)	48	#5	2'-0"	—
b(E)	903	#6	39'-6"	—
b1(E)	1520	#5	34'-6"	—
b2(E)	762	#7	24'-10"	—
b3(E)	196	#5	31'-0"	—
b4(E)	49	#5	15'-2"	—
b5(E)	1	#5	7'-6"	—
c(E)	254	#5	8'-6"	—
c1(E)	508	#5	1'-4"	┌
c2(E)	9	#5	2'-8"	—
c3(E)	120	#5	24'-7"	—
c4(E)	6	#5	22'-6"	—
d(E)	277	#5	5'-7"	┌
d1(E)	277	#5	6'-10"	┌
d2(E)	277	#5	1'-4"	┌
d3(E)	277	#5	2'-9"	┌
d4(E)	554	#5	4'-0"	┌
d5(E)	277	#5	3'-8"	┌
d6(E)	3	#6	4'-5"	┌
d7(E)	9	#6	8'-11"	┌
d8(E)	3	#6	3'-11"	┌
e(E)	156	#4	18'-2"	—
e1(E)	8	#8	31'-8"	—
e2(E)	8	#4	29'-4"	—
e3(E)	28	#4	15'-2"	—
e4(E)	2	#8	15'-2"	—
m(E)	32	#6	30'-0"	—
m1(E)	32	#6	40'-3"	—
m2(E)	152	#6	10'-6"	—
m3(E)	36	#6	4'-4"	—
m4(E)	36	#6	6'-0"	—
m5(E)	8	#6	2'-4"	—
m6(E)	144	#4	6'-0"	—
m7(E)	36	#6	4'-4"	—
m8(E)	19	#8	6'-6"	—
s(E)	264	#5	6'-10"	┌
s1(E)	152	#4	16'-5"	┌
s2(E)	72	#4	16'-0"	┌
v(E)	104	#5	3'-9"	┌
v1(E)	120	#5	4'-3"	┌
v2(E)	32	#5	4'-8"	┌
Reinforcement Bars, Epoxy Coated	Pound		308,930	
Concrete Superstructure	Cu. Yd.		1,336.9	
Bridge Deck Grooving	Sq. Yd.		2,394	
Protective Coat	Sq. Yd.		3,899	

**JOINT DETAILS**



Note: Cut longitudinal reinforcement to clear drainage scuppers.

**SCUPPER REINFORCEMENT DETAILS**



6/19/2012 11:01:50 AM S:\10\05\CADD\60177\_IL\_173\60177\_Sheets\0490535-60177-06-SD3.dgn

BOWMAN, BARRETT & ASSOCIATES INC.  
CONSULTING ENGINEERS  
Chicago, Illinois  
312.228.0100  
www.bbdatinc.com

USER NAME =	DESIGNED - MRM	DATE - 6/19/2012
PLLOT SCALE =	CHECKED - TL	REVISED -
PLLOT DATE =	DRAWN - LAM	REVISED -
	CHECKED - MRM	REVISED -

STATE OF ILLINOIS  
DEPARTMENT OF TRANSPORTATION

SUPERSTRUCTURE DETAILS III  
STRUCTURE NO. 049-0535 (BRIDGE NO. 441)

SHEET NO. S-16 OF S-36 SHEETS

F.A.I. RT.E.	SECTION	COUNTY	TOTAL SHEETS	SHEET NO.
94	49-1-R-1	LAKE	677	454
CONTRACT NO. 60L77				
ILLINOIS FED. AID PROJECT				