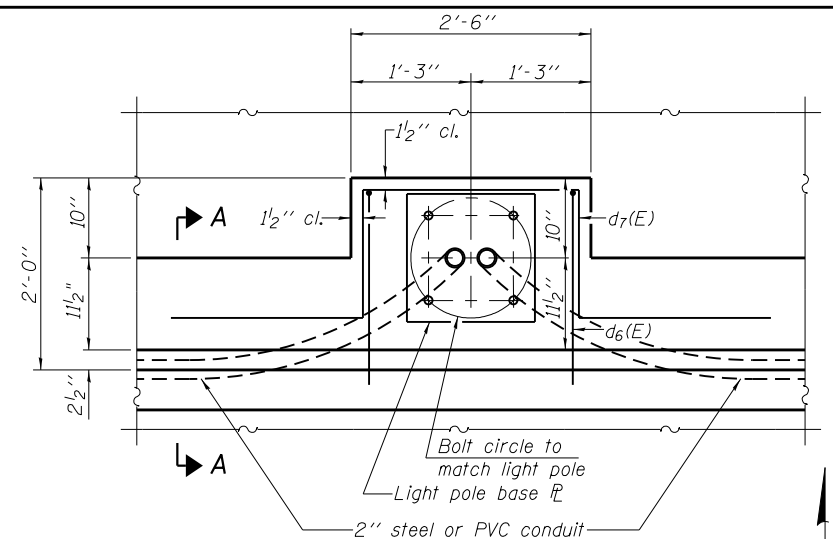
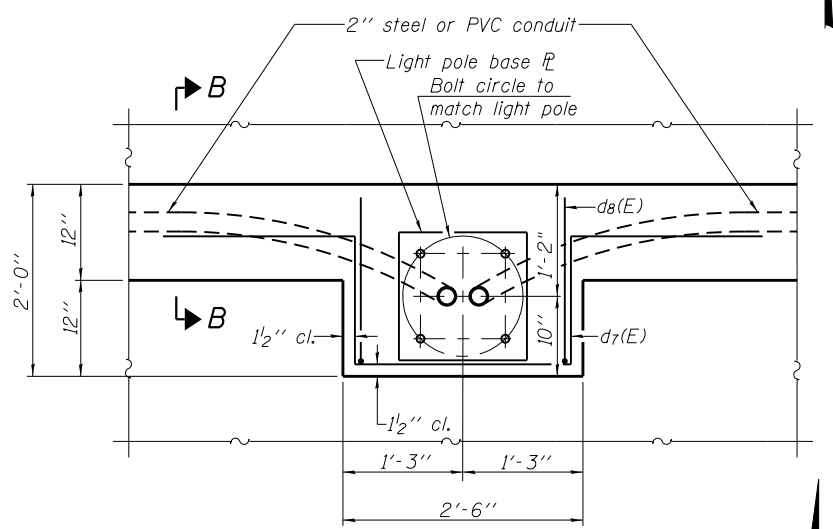


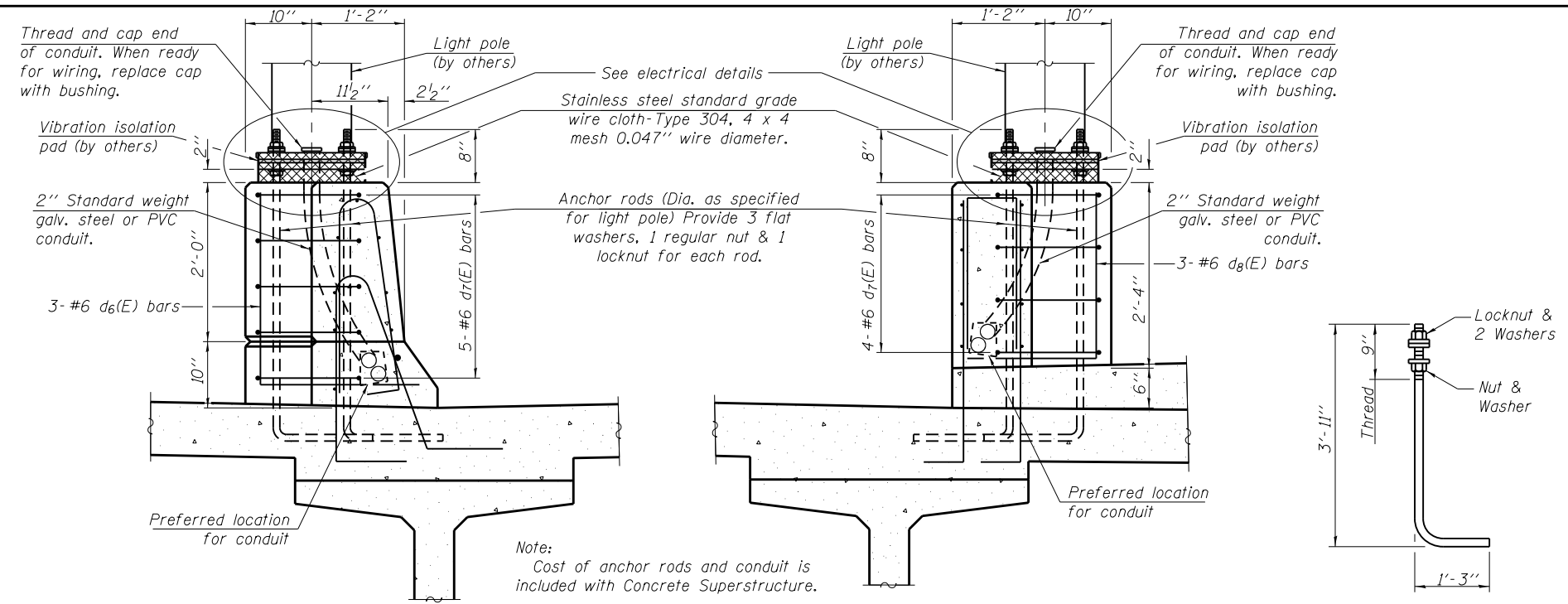
6/19/2012 11:01:50 AM
 S:\10105\CADD\60177_IL_173\60177_Sheets\0490535-60177-05-SD2.dgn



PLAN - N. PAR. LIGHT POLE FOUNDATION



PLAN - S. PAR. LIGHT POLE FOUNDATION

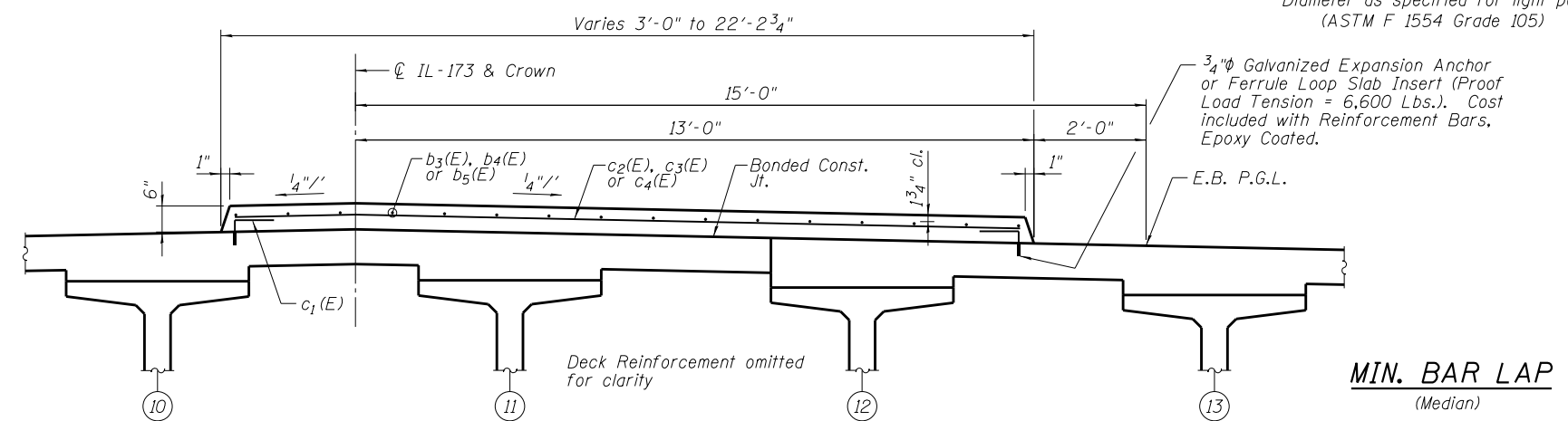


SECTION A-A
(N. Parapet, looking East)

SECTION B-B
(S. Parapet, looking East)

ANCHOR ROD

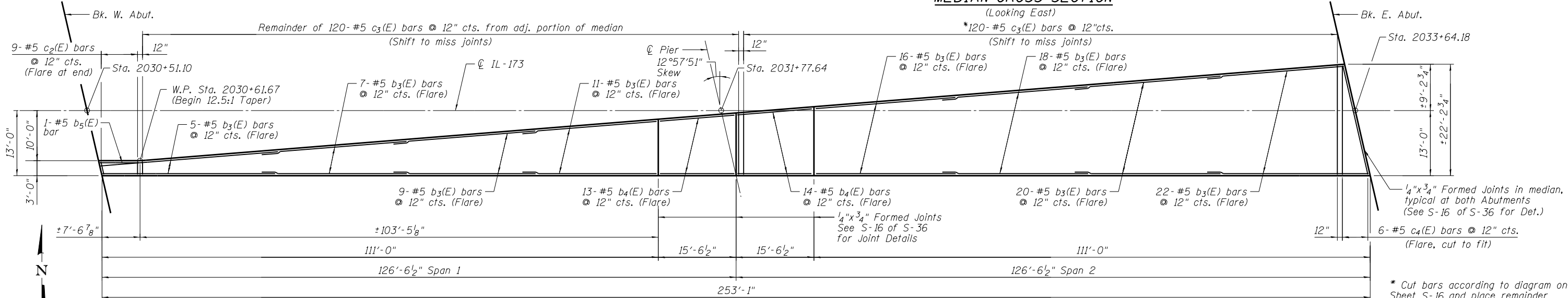
Diameter as specified for light poles.
(ASTM F 1554 Grade 105)



MEDIAN CROSS SECTION
(Looking East)

MIN. BAR LAP
(Median)

#5 = 3'-3"



MEDIAN PLAN

| | | | | | | | | | | |
|--|--------------|-----------------|------------------|---|--|---------------------------|--------------------|---------------|--------------------|-----------------|
| BOWMAN, BARRETT & ASSOCIATES INC. CONSULTING ENGINEERS Chicago, Illinois 312.228.0100 www.bbdatinc.com | USER NAME = | DESIGNED - MRM | DATE - 6/19/2012 | STATE OF ILLINOIS DEPARTMENT OF TRANSPORTATION | SUPERSTRUCTURE DETAILS II STRUCTURE NO. 049-0535 (BRIDGE NO. 441) | F.A.I. R.T.E. = 94 | SECTION = 49-1-R-1 | COUNTY = LAKE | TOTAL SHEETS = 677 | SHEET NO. = 453 |
| | PLOT SCALE = | CHECKED - TL | REVISER - | | | CONTRACT NO. 60L77 | | | | |
| | PLOT DATE = | DRAWN - MTR/LAM | REVISER - | | | ILLINOIS FED. AID PROJECT | | | | |