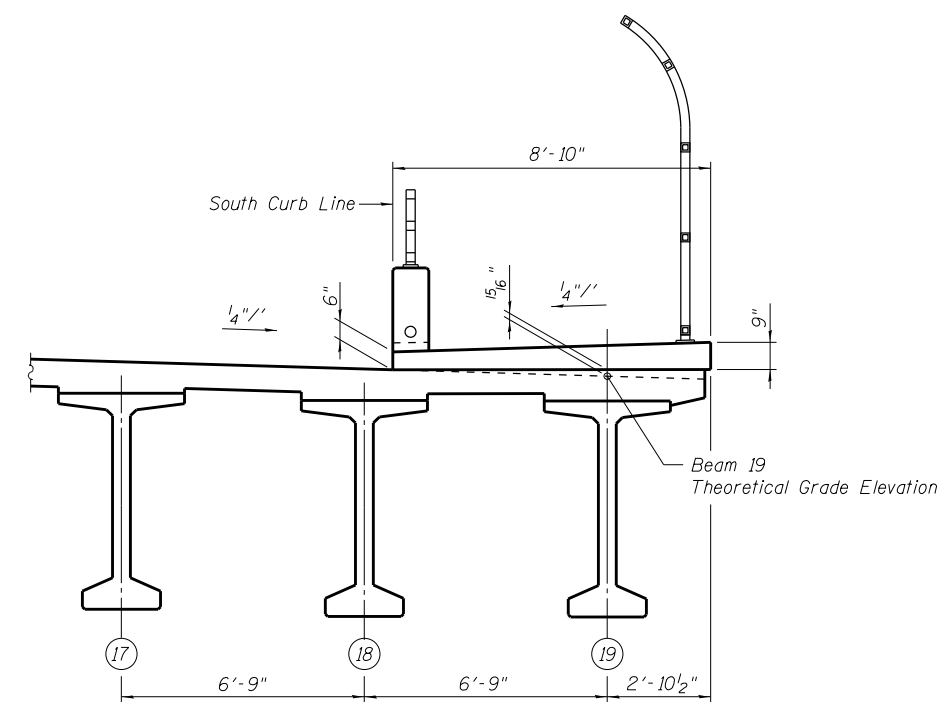


BEAM 19*

Location	Station	Offset	Theoretical Grade Elevations	Theoretical Grade Elevations Adjusted For Dead Load Deflection
Bk. W. Abut.	2030+64.21	56.96	764.84	764.84
☉ Brg. W. Abut.	2030+65.75	56.96	764.84	764.84
A	2030+75.75	56.96	764.89	764.92
B	2030+85.75	56.96	764.93	764.99
C	2030+95.75	56.96	764.96	765.05
D	2031+05.75	56.96	764.98	765.08
E	2031+15.75	56.96	764.98	765.10
F	2031+25.75	56.96	764.98	765.11
G	2031+35.75	56.96	764.96	765.09
H	2031+45.75	56.96	764.94	765.05
I	2031+55.75	56.96	764.90	765.00
J	2031+65.75	56.96	764.86	764.93
K	2031+75.75	56.96	764.80	764.84
☉ W. Brg. Pier	2031+89.75	56.96	764.70	764.70
☉ Pier	2031+90.75	56.96	764.69	764.69
☉ E. Brg. Pier	2031+91.75	56.96	764.69	764.69
L	2032+01.75	56.96	764.60	764.63
M	2032+11.75	56.96	764.50	764.57
N	2032+21.75	56.96	764.40	764.48
O	2032+31.75	56.96	764.28	764.39
P	2032+41.75	56.96	764.15	764.27
Q	2032+51.75	56.96	764.01	764.14
R	2032+61.75	56.96	763.86	763.99
S	2032+71.75	56.96	763.70	763.82
T	2032+81.75	56.96	763.53	763.63
U	2032+91.75	56.96	763.35	763.42
V	2033+01.75	56.96	763.16	763.20
☉ Brg. E. Abut.	2033+15.75	56.96	762.87	762.87
Bk E. Abut.	2033+17.29	56.96	762.84	762.84



SECTION THRU SIDEWALK
(Looking East)

*See Section Thru Sidewalk (this sheet) for location of Beam 19 Theoretical Grade Elevation

6/19/2012 11:04:47 AM

S:\101\05_CADD\60L77_IL_173\60L77_Sheets\0490535-60L77-00-SEG.dgn

BOWMAN, BARRETT & ASSOCIATES INC.
CONSULTING ENGINEERS
Chicago, Illinois
312.228.0100
www.bbdatinc.com

USER NAME =	DESIGNED - MRM	DATE - 6/19/2012
	CHECKED - TL	REVISED -
PLOT SCALE =	DRAWN - MTR	REVISED -
PLOT DATE =	CHECKED - MRM	REVISED -

STATE OF ILLINOIS
DEPARTMENT OF TRANSPORTATION

TOP OF SLAB ELEVATIONS VI
STRUCTURE NO. 049-0535 (BRIDGE NO. 441)

SHEET NO. S-10 OF S-36 SHEETS

F.A.I. RTE.	SECTION	COUNTY	TOTAL SHEETS	SHEET NO.
94	49-1-R-1	LAKE	677	448
CONTRACT NO. 60L77				
ILLINOIS FED. AID PROJECT				