

GENERAL NOTES

Reinforcement bars designated (E) shall be epoxy coated.

The embankment configuration shown shall be the minimum that must be placed and compacted prior to construction of the abutments.

The manufacturer, contractor, and beam transportation company shall provide adequate bracing and support for the PPC beams during handling, transporting, storing and erecting to ensure the safety of the personnel associated with construction of the project.

All exposed concrete edges shall have a 3/4" x 45° chamfer, except where shown otherwise. Chamfer on vertical edges shall be continued a minimum of one foot below finished ground level.

Reinforcement bar bending details shall be in accordance with the latest "Manual of Standard Practice for Detailing Reinforced Concrete Structures", ACI 315.

Reinforcement bar bending dimensions are out to out.

Bars noted thus, 3x2-#5 indicates 3 lines of bars with 2 lengths of bars per line.

Cover from the face of concrete to face of reinforcement bars shall be 3" for surfaces formed against earth and 2" for all other surfaces unless otherwise shown.

Bridge seat reinforcement shall be carefully placed to avoid interference with drilling holes for anchor rods. The beams shall be erected in final position prior to drilling holes for and placing anchor rods.

Contractor shall not scale dimensions from the Contract Plans for construction purposes. Scales shown are for information only.

No construction joints except those shown on the plans will be allowed unless approved by the Engineer.

The Contractor may request copies of existing construction plans that are currently on file with the Tollway. The request shall be in writing with the understanding that any reproduction cost will be at the Contractor's expense.

It shall be the Contractor's responsibility to verify the location of all utilities prior to starting construction. Contact J.U.L.I.E., 800-892-0123

It shall be the Contractor's responsibility to verify the location of all fiber optic utilities prior to starting construction. The Contractor shall initiate the location process for the fiber optic cable by completing a "Request Tollway Utilities Locate" form filled in online at the Tollway website under "Doing Business" at least four (4) business days prior to starting any underground operations, excavations or digging of any type in the general area of the fiber optic cable."

Temporary soil retention systems, sheeting, bracing or cofferdams shall be constructed at the locations shown on the plans and/or as required for the excavation to protect the adjacent areas from settling or falling into the excavated areas.

Concrete sealant shall be applied to the surfaces of all pier and abutment seats, including backwalls located below roadway expansion joints. Sealant shall also be applied to all exposed surfaces of piers in the median or piers, abutments and wingwalls that are adjacent to the roadway. Existing surfaces shall be power washed in accordance with the applicable portions of Section 592 of the latest IDOT Standard Specifications for Road and Bridge Construction.

After the beams (girders) are set, all elevations for determining fillet heights shall be taken at one time.

Upon completion of the structure, the Contractor shall measure the resulting horizontal and vertical clearances and submit them to the Engineer for review and inclusion in the As Built plans (Record Drawings).

The soil boring logs represent point information. Presentation of this information in no way implies that subsurface conditions are the same at locations other than the exact location of the boring.

Protective Shield limits are out-to-out of existing bridge deck and 5'-0" beyond centerline of existing shoulder piers (into end spans).

INDEX OF SHEETS

S-1	General Plan & Elevation	S-17	Diaphragm Details
S-2	General Data	S-18	Bridge Approach Slab Plan
S-3	Construction Staging & Details	S-19	Bridge Approach Slab Details
S-3A	Substructure Layout	S-20	Bridge Fence Railing, Sidewalk Mounted
S-3B	Pile Driving Record I	S-21	Drainage Scupper, DS-33
S-3C	Pile Driving Record II	S-22	Drainage System
S-3D	Pier Removal Details	S-23	Framing Plan
S-4	Temporary Concrete Barrier	S-24	72" PPC Bulb T-Beam Details I
S-5	Top of Slab Elevations I	S-25	72" PPC Bulb T-Beam Details II
S-6	Top of Slab Elevations II	S-26	West Abutment I
S-7	Top of Slab Elevations III	S-27	West Abutment II
S-8	Top of Slab Elevations IV	S-28	East Abutment I
S-9	Top of Slab Elevations V	S-29	East Abutment II
S-10	Top of Slab Elevations VI	S-30	Abutment Details
S-11	Top of West Approach Slab Elevations	S-31	Pier Details I
S-12	Top of East Approach Slab Elevations	S-32	Pier Details II
S-13	Superstructure Plan & Cross Section	S-33	HP Pile Details
S-14	Superstructure Details I	S-34	Bar Splicer Details
S-15	Superstructure Details II	S-35	Soil Boring Logs I
S-16	Superstructure Details III	S-36	Soil Boring Logs II

TOTAL BILL OF MATERIAL - IDOT

ITEM	UNIT	SUPER	SUB	TOTAL
Removal of Existing Structures	Each	0.55	-	0.55
Protective Shield	Sq. Yd.	1,033	-	1,033
Concrete Structures	Cu. Yd.	80.8	-	80.8
Concrete Superstructure	Cu. Yd.	1,735.6	-	1,735.6
Bridge Deck Grooving	Sq. Yd.	2,960	-	2,960
Protective Coat	Sq. Yd.	4,825	-	4,825
Reinforcement Bars, Epoxy Coated	Pound	416,220	-	416,220
Bar Splicers	Each	1,220	-	1,220
Bridge Fence Railing (Sidewalk)	Foot	626	-	626
Parapet Railing	Foot	618	-	618
Drainage Scuppers, DS-33	Each	6	-	6
Name Plates	Each	-	1	1

TOTAL BILL OF MATERIAL - TOLLWAY

ITEM	UNIT	SUPER	SUB	TOTAL
Porous Granular Backfill	Cu. Yd.	-	638	638
Removal of Existing Structures	Each	0.10	0.35	0.45
Structure Excavation	Cu. Yd.	-	648	648
Concrete Structures	Cu. Yd.	-	564.5	564.5
Concrete Encasement	Cu. Yd.	-	29.6	29.6
Furnishing and Erecting Precast Prestressed Concrete Bulb T-Beams 72"	Foot	4,757	-	4,757
Reinforcement Bars, Epoxy Coated	Pound	-	64,120	64,120
Bar Splicers	Each	-	102	102
Slope Wall 4 Inch	Sq. Yd.	-	1,479	1,479
Furnishing Steel Piles HP 14x73	Foot	-	7,302	7,302
Driving Piles	Foot	-	7,302	7,302
Test Pile Steel HP 14x73	Each	-	3	3
Concrete Sealer	Sq. Ft.	-	5,084	5,084
Geocomposite Wall Drain	Sq. Yd.	-	280	280
Drainage System	L. Sum	-	1	1
Temporary Sheet Piling	Sq. Ft.	-	1,330	1,330
Pipe Underdrains for Structures 4"	Foot	-	287	287

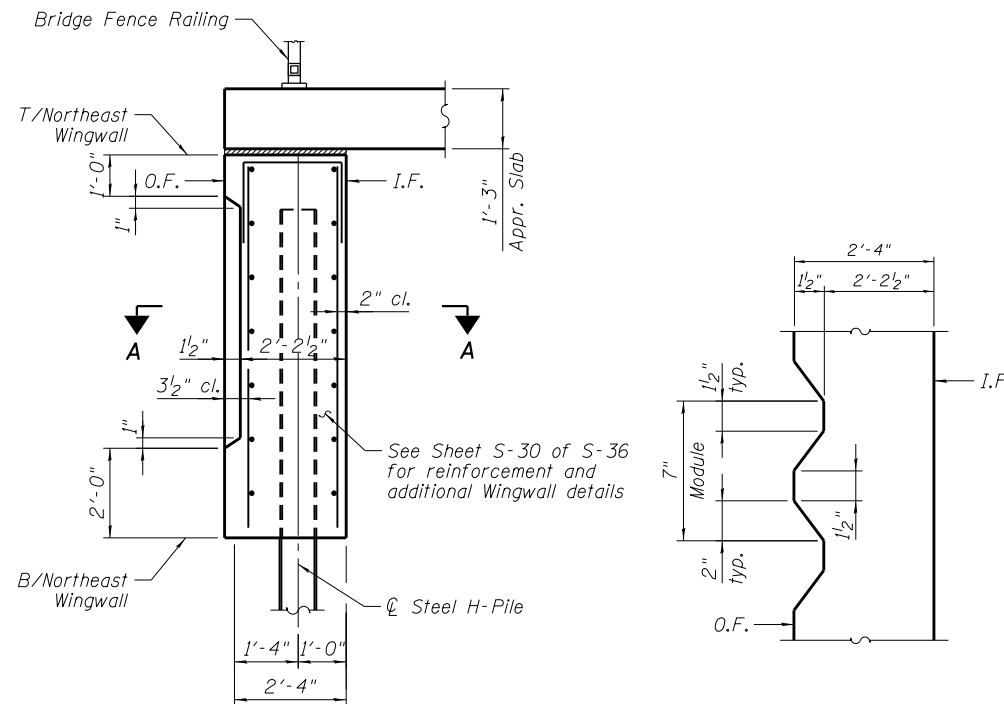
CONSTRUCTION SPECIFICATIONS PERTAINING TO TOLLWAY PAY ITEMS

Illinois Department of Transportation Guide Bridge Special Provisions (GBSP's)

Tollway Supplemental Specifications to the Illinois Department of Transportation Standard Specifications for Road and Bridge Construction Issued January 1, 2012

Illinois Department of Transportation Supplemental Specifications and Recurring Special Provisions Adopted January 1, 2012

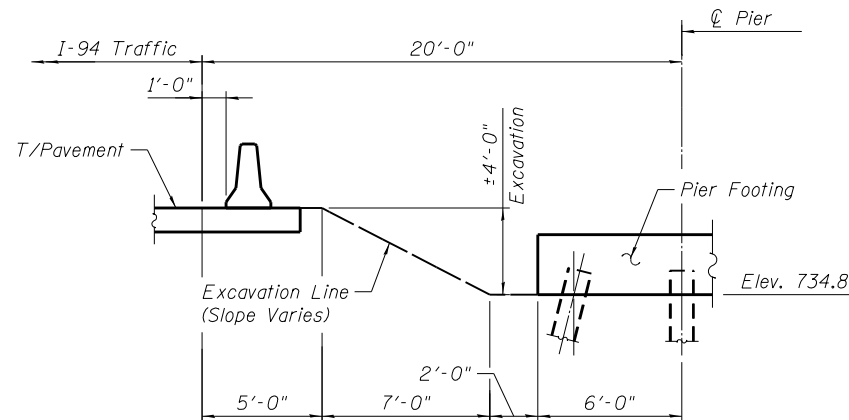
Illinois Department of Transportation Standard Specifications for Road and Bridge Construction Adopted January 1, 2012



SECTION THRU NORTHEAST WINGWALL
(Looking East)

SECTION A-A
(Reinf. not shown for clarity)

RUSTICATION DETAILS



MEDIAN PIER CONSTRUCTION DETAIL
(Symmetrical about centerline of Pier)

STATION 2031+77.64
BUILT 201 BY
STATE OF ILLINOIS
F.A.P. RTE. 0303 SEC. 49-1-R-1
LOADING HL-93
STRUCTURE NO. 049-0535

NAME PLATE
See Std. 515001

6/19/2012 5:10:00 PM

S:\10105\CADD\60177_IL_173\60177_Sheets\0490535-60177-002-60.dgn

BOWMAN, BARRETT & ASSOCIATES INC. CONSULTING ENGINEERS Chicago, Illinois 312.228.0100 www.bbassocinc.com	USER NAME =	DESIGNED - MRM	DATE - 6/19/2012	STATE OF ILLINOIS DEPARTMENT OF TRANSPORTATION	GENERAL DATA STRUCTURE NO. 049-0535 (BRIDGE NO. 441)	F.A.I. RTE. =	SECTION	COUNTY	TOTAL SHEETS	SHEET NO.
	PLOT SCALE =	CHECKED - TL	REVISED -			94	49-1-R-1	LAKE	677	440
	PLOT DATE =	DRAWN - MTR	REVISED -	SHEET NO. S-2 OF S-36 SHEETS			CONTRACT NO. 60L77			
		CHECKED - MRM	REVISED -	ILLINOIS FED. AID PROJECT						