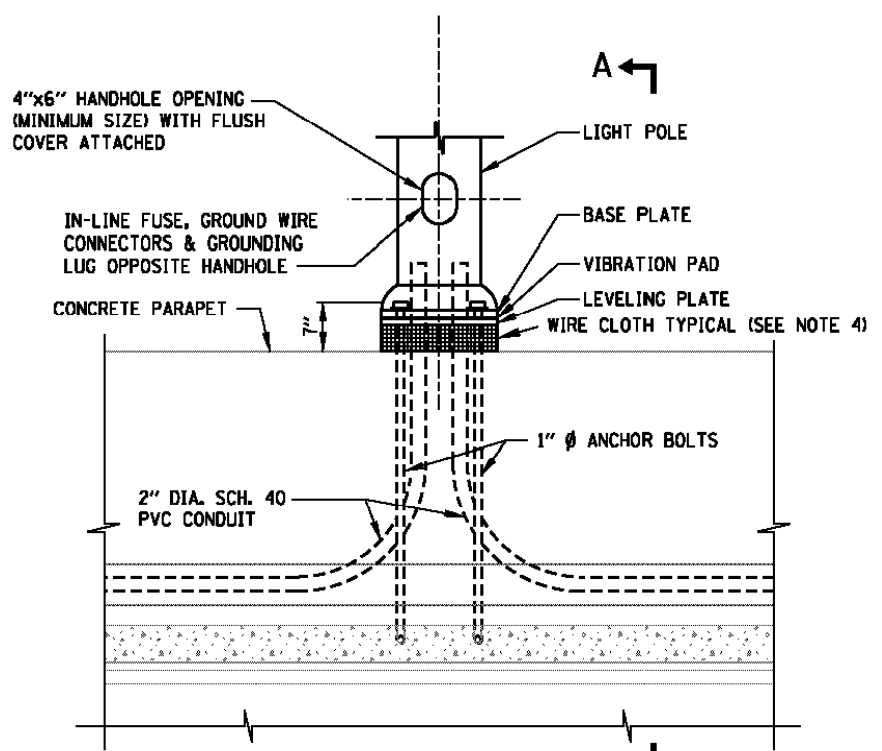
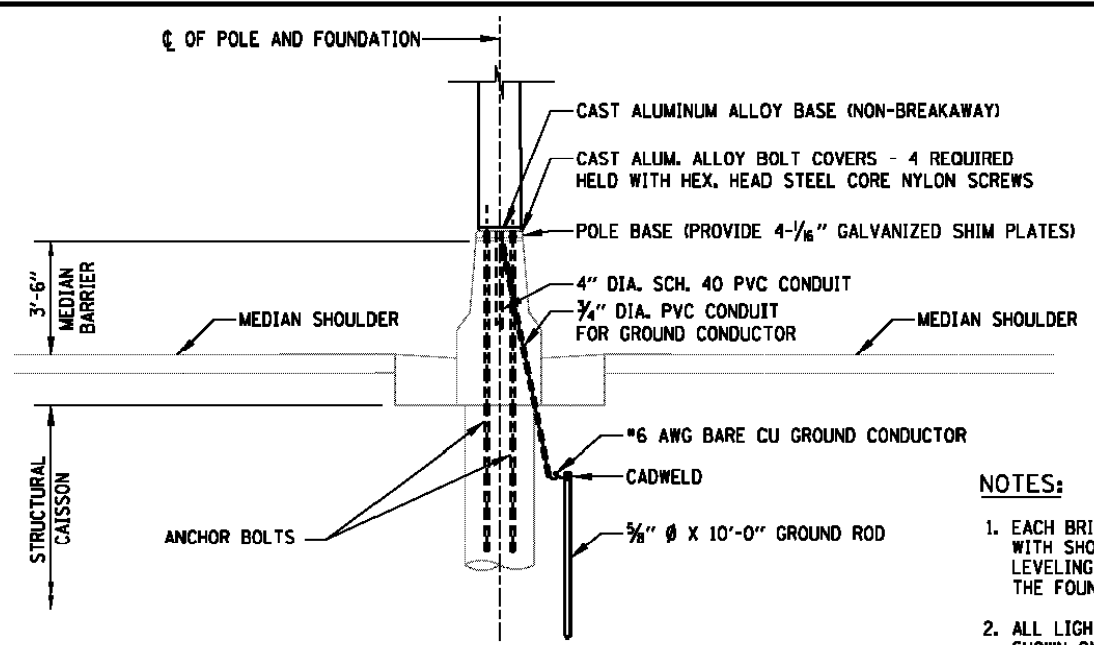


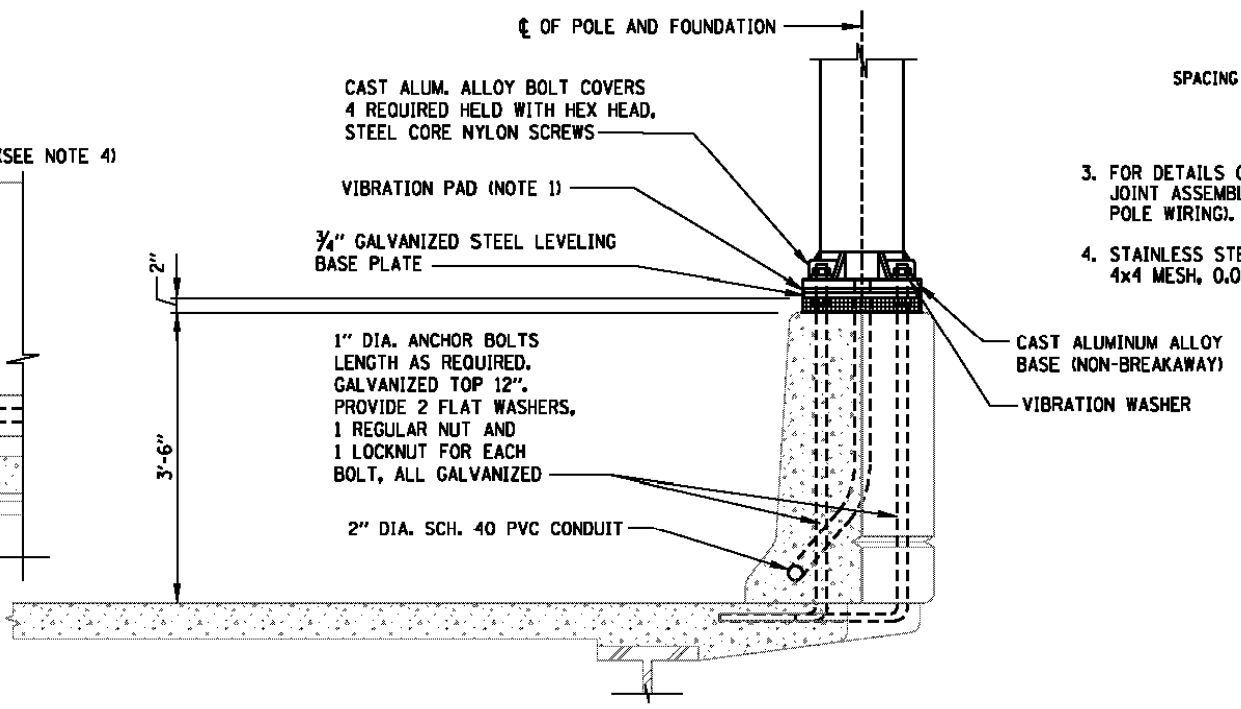
PLAN VIEW



ELEVATION OF CONCRETE PARAPET AND LIGHT STANDARD



MEDIAN BARRIER MOUNTED LIGHT STANDARD DETAIL
(SEE STANDARDS H8 AND H9)



BRIDGE PARAPET MOUNTED LIGHT STANDARD DETAIL
SECTION A-A

NOTES:

1. EACH BRIDGE MOUNTED STANDARD SHALL BE PROVIDED WITH SHOCK ABSORBING VIBRATION PADS, NUTS, WASHERS, LEVELING PLATE AND WIRE MESH FOR ITS ERECTION ON THE FOUNDATION AS SHOWN ON THE PLANS.
2. ALL LIGHT STANDARDS, BOTH NEW AND EXISTING, ARE SHOWN ON PLANS WITH THE FOLLOWING SAMPLE DESCRIPTION:
 MOUNTING HEIGHT
 ARM LENGTH
 SPACING RANGE
 CIRCUIT NUMBER
 STATION OF LIGHT STANDARD
 STA. 0 + 20
 DISTRIBUTION TYPE
 CONTROL
 S=SEMI-CUTOFF
 C=FULL CUTOFF
3. FOR DETAILS OF FUSE HOLDER, POLE BASE WIRING, AND JOINT ASSEMBLY, SEE STANDARD H2 (LIGHT STANDARD POLE WIRING).
4. STAINLESS STEEL STANDARD GRADE WIRE CLOTH-TYPE 304, 4x4 MESH, 0.047" WIRE DIAMETER.

SHEET 6 OF 6

Illinois Tollway
Open Roads for a Brighter Future

LIGHT STANDARD FOUNDATION
 STANDARD H1-01

APPROVED: *Paul Kovacs* CHIEF ENGINEER DATE 2-7-2012

s:\projects\3031 us 41-usc to il 173 - bba\proj\set work\disciplines\electrical\sheet\01666-77-std-light-51.dgn

EJM ENGINEERING, INC.
 411 South Wells Street Suite 1000
 Chicago, Illinois 60607

FILE NAME	USER NAME: rsonson	DESIGNED - RAS	REVISED -
		DRAWN - BHH	REVISED -
	PLOT SCALE = NONE 1/4" IN.	CHECKED - MKR	REVISED -
	PLOT DATE = 6/18/2012	DATE - 6/19/2012	REVISED -

STATE OF ILLINOIS
 DEPARTMENT OF TRANSPORTATION

TOLLWAY STANDARD DRAWINGS
 SCALE: NONE SHEET NO. 51 OF 53 SHEETS STA. TO STA.

F.A. RTE.	SECTION	COUNTY	TOTAL SHEETS	SHEET NO.
94	49-1-R-1	LAKE	677	411
			CONTRACT NO. 60L77	
ILLINOIS FED. AID PROJECT				

E-51