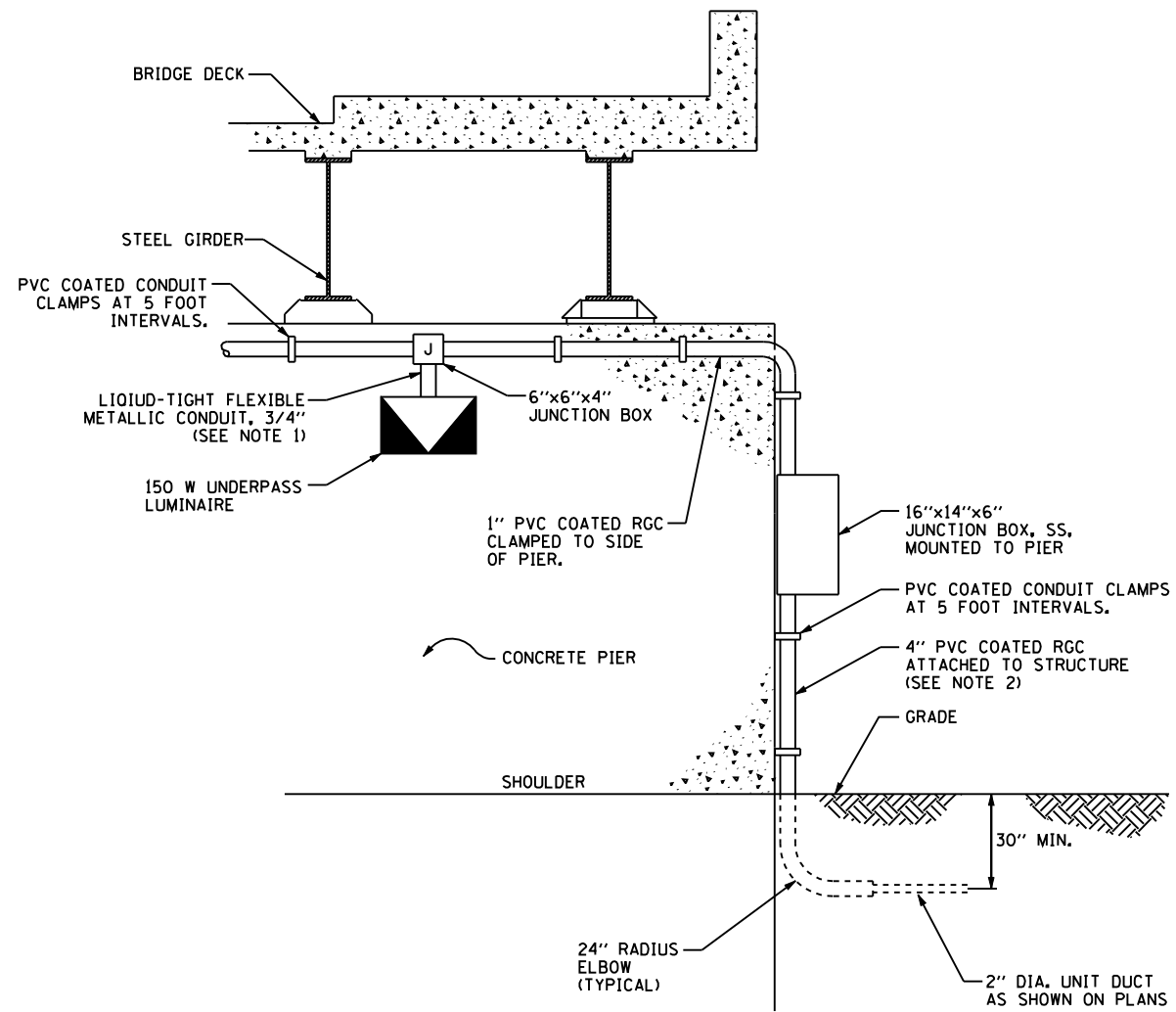
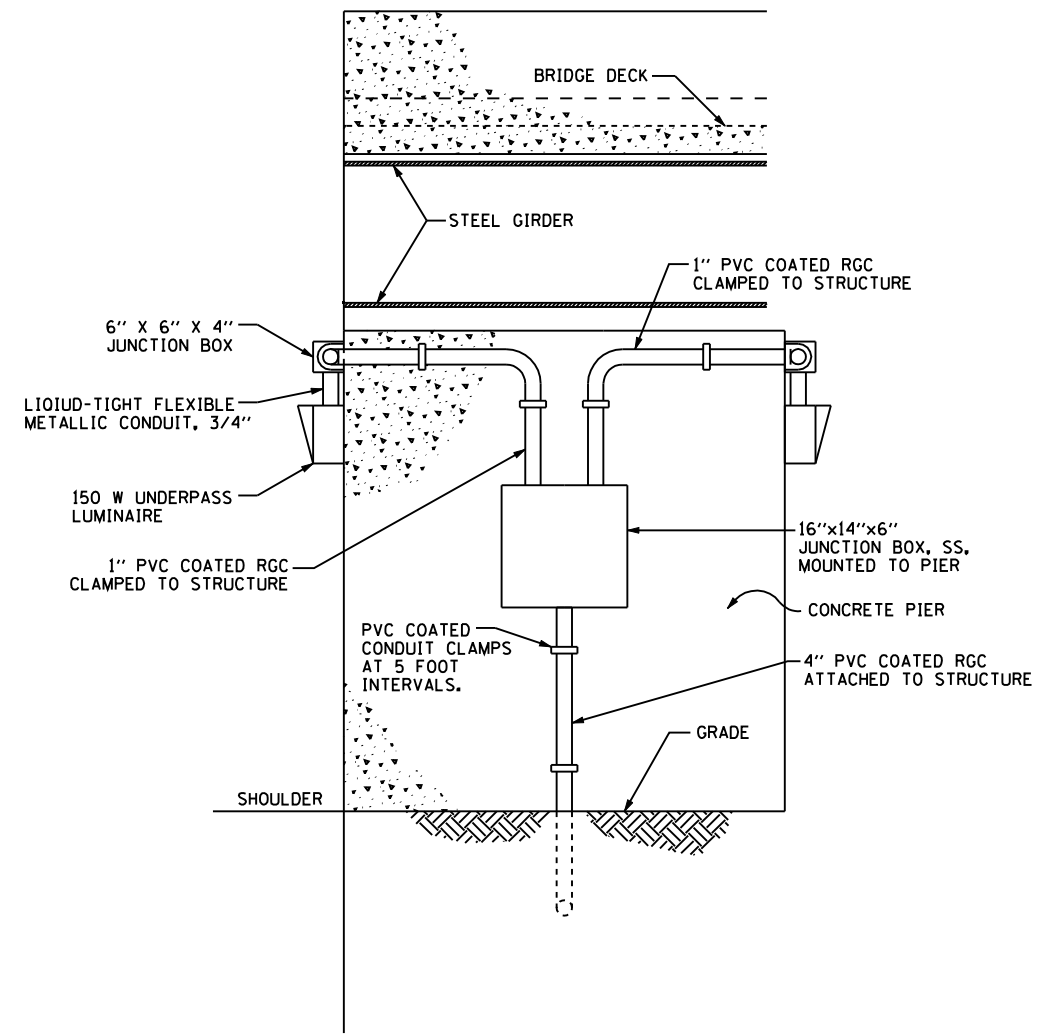


NOTES:

1. LIQUID TIGHT FLEXIBLE METAL CONDUIT, MAXIMUM LENGTH 6'-0", TYPICAL FOR EACH INSTANCE AS SHOWN, PROVIDE PVC COATED RIGID GALVANIZED STEEL CONDUIT AS REQUIRED NOT TO EXCEED 6'-0" OF FLEXIBLE LIQUID TIGHT METAL CONDUIT. LIQUID TIGHT FLEXIBLE METAL CONDUIT WILL BE INCLUDED IN THE COST OF THE UNDERPASS LUMINAIRE IT CONNECTS TO.
2. THE 4" PVC COATED RGC ATTACHED TO STRUCTURE AND ASSOCIATED UNDERGROUND ELBOW ARE INCLUDED IN THE COST OF THE 16" X 14" X 6" JUNCTION BOX ATTACHED TO STRUCTURE.



ELEVATION - LOOKING EAST (AT IL 173)
NOT TO SCALE



ELEVATION - LOOKING NORTH (AT IL 173)
NOT TO SCALE

s:\projects\3031 us 41-mse to il 173 - bba\proj\set work\disciplines\electrical\sheet\1173-1-1-173-light-45a.dgn

EJM **EJM ENGINEERING, INC.**
411 South Wells Street Suite 1000
Chicago, Illinois 60607

FILE NAME	USER NAME = rsonson	DESIGNED - RAS	REVISED -
		DRAWN - BHH	REVISED -
	PLOT SCALE = NONE / IN.	CHECKED - MKR	REVISED -
	PLOT DATE = 6/18/2012	DATE - 6/19/2012	REVISED -

STATE OF ILLINOIS
DEPARTMENT OF TRANSPORTATION

TOLLWAY UNDERPASS LIGHTING DETAILS

SCALE: NONE SHEET NO. 45A OF 53 SHEETS STA. TO STA.

F.A. RTE.	SECTION	COUNTY	TOTAL SHEETS	SHEET NO.
94	49-1-R-1	LAKE	677	405A
CONTRACT NO. 60L77				
ILLINOIS FED. AID PROJECT				

E-45A