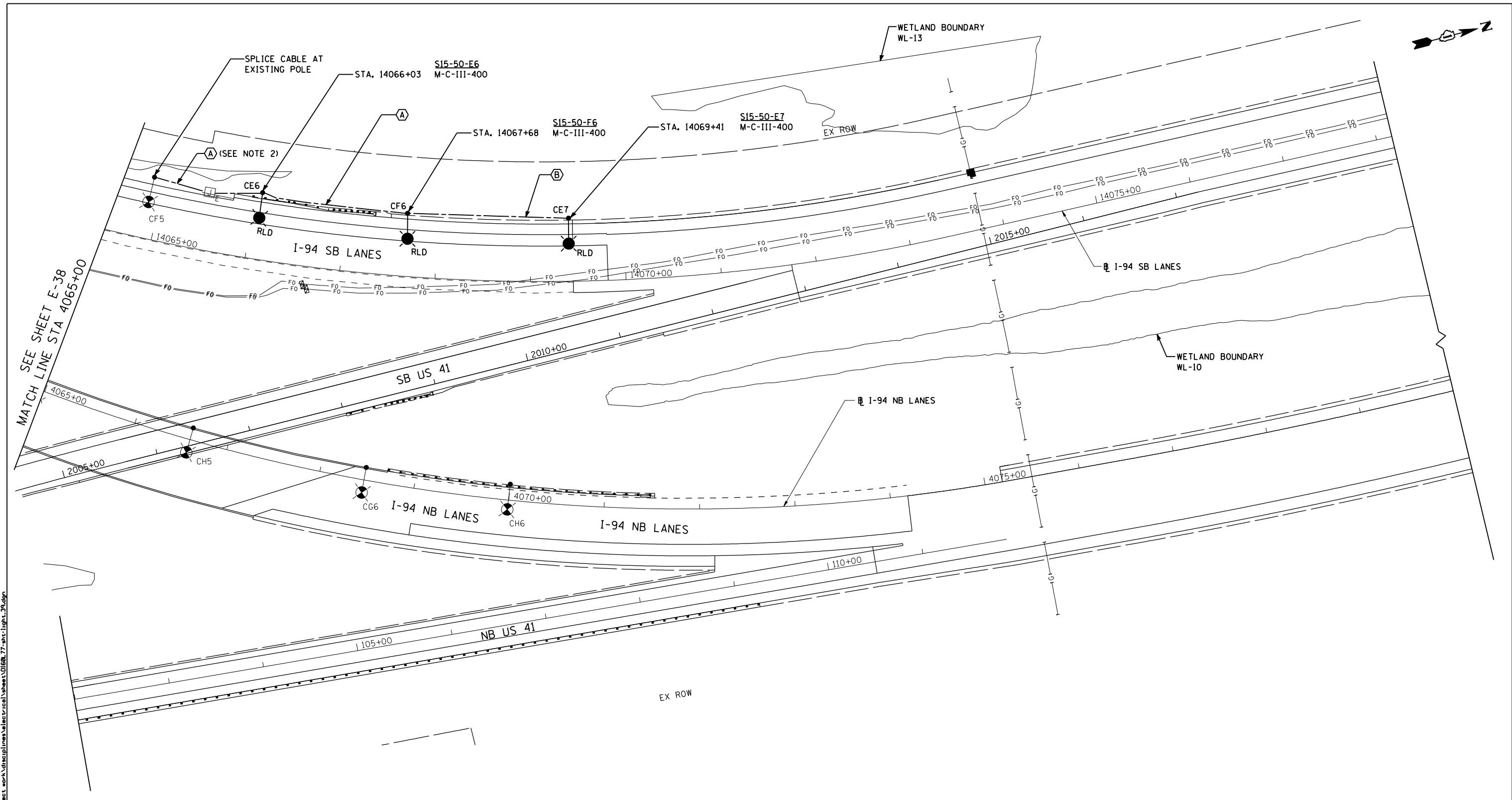


s:\projects\2012\11-173 - bba\proj\met_work\disciplines\electrical\sheet\1173-1173-light_39.dwg



- NOTES:**
1. ALL OFFSETS AND LIGHT STANDARD FOUNDATIONS FOR GROUND MOUNTED POLES ARE PER TOLLWAY STANDARD DETAIL HI-01, UNLESS NOTED OTHERWISE.
 2. INSTALL UNIT DUCT IN EXISTING 2" EMBEDDED CONDUIT BETWEEN POLE CF5 AND EXISTING JUNCTION BOX. REMOVAL OF THE EXISTING UNIT DUCT IS INCLUDED IN THE COST OF THE NEW UNIT DUCT.

- TOLLWAY CONDUIT TAGS:**
- | TAG | DESCRIPTION |
|-----|---|
| (A) | 2" DIA. UNIT DUCT WITH 4-1/C NO. 4, 1-1/C NO. 6 GND |
| (B) | 2" DIA. UNIT DUCT WITH 2-1/C NO. 4, 1-1/C NO. 6 GND |
| (C) | 2" DIA. UNIT DUCT WITH 4-1/C NO. 2, 1-1/C NO. 4 GND |

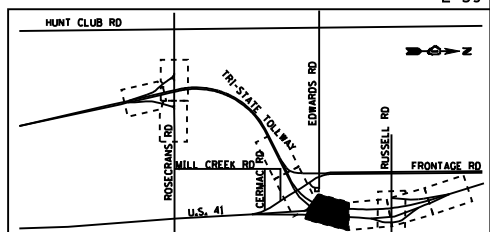
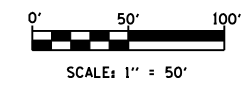
EJM ENGINEERING, INC.
 411 South Wells Street Suite 1000
 Chicago, Illinois 60607

FILE NAME	USER NAME = rsonson	DESIGNED - RAS	REVISED -
		DRAWN - BHH	REVISED -
	PLOT SCALE = 100.0000' / IN.	CHECKED - MKR	REVISED -
	PLOT DATE = 6/18/2012	DATE - 6/19/2012	REVISED -

**STATE OF ILLINOIS
 DEPARTMENT OF TRANSPORTATION**

**PROPOSED TOLLWAY LIGHTING PLAN
 I-94 FROM ROSECRANS RD TO STATE LINE**

SCALE: 1"=50' SHEET NO. 39 OF 53 SHEETS STA. 4065+00 TO STA. 4080+00



F.A. RTE.	SECTION	COUNTY	TOTAL SHEETS	SHEET NO.
94	49-1-R-1	LAKE	677	399
CONTRACT NO. 60L77				
ILLINOIS FED. AID PROJECT				