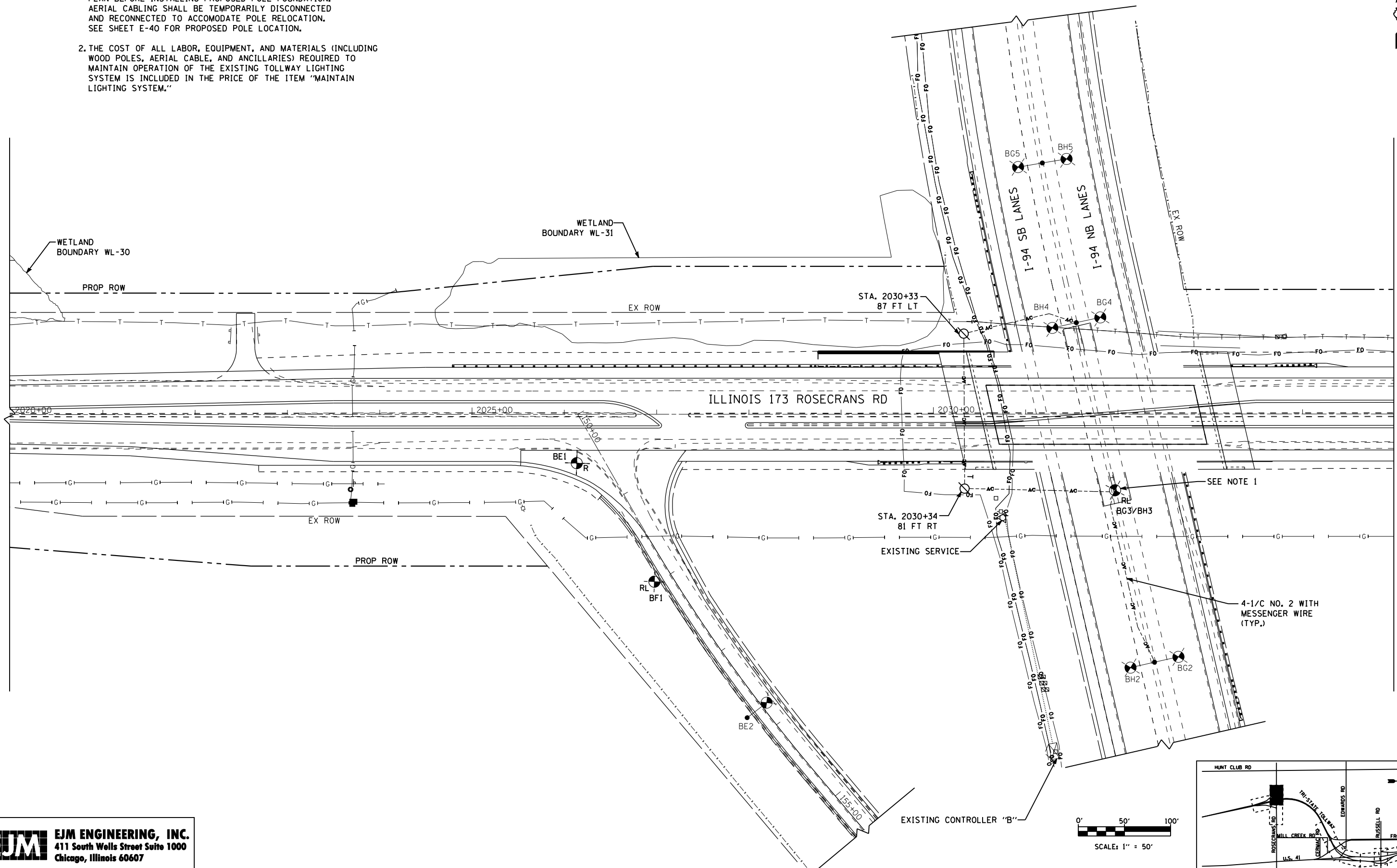


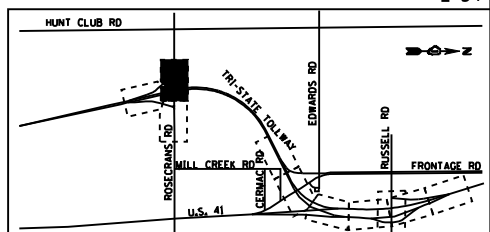
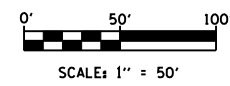
- NOTES:**
1. CONNECT EXISTING LIGHT POLE AERIALLY AS SHOWN ON PLAN BEFORE INSTALLING PROPOSED POLE FOUNDATION. AERIAL CABLING SHALL BE TEMPORARILY DISCONNECTED AND RECONNECTED TO ACCOMODATE POLE RELOCATION. SEE SHEET E-40 FOR PROPOSED POLE LOCATION.
 2. THE COST OF ALL LABOR, EQUIPMENT, AND MATERIALS (INCLUDING WOOD POLES, AERIAL CABLE, AND ANCILLARIES) REQUIRED TO MAINTAIN OPERATION OF THE EXISTING TOLLWAY LIGHTING SYSTEM IS INCLUDED IN THE PRICE OF THE ITEM "MAINTAIN LIGHTING SYSTEM."



MATCH LINE STA 2035+00
SEE SHEET E-35

s:\projects\2012\11-173 - bba\proj\set work\disciplines\electrical\sheet\1173-light-34.dgn

EJM ENGINEERING, INC.
411 South Wells Street Suite 1000
Chicago, Illinois 60607



FILE NAME	USER NAME = rsonson	DESIGNED - RAS	REVISED -
		DRAWN - BHH	REVISED -
		CHECKED - MKR	REVISED -
		DATE - 6/19/2012	REVISED -

**STATE OF ILLINOIS
DEPARTMENT OF TRANSPORTATION**

**TOLLWAY LIGHTING AND RELOCATION PLAN
ILLINOIS 173 ROSECRANS RD**

SCALE: 1"=50' SHEET NO. 34 OF 53 SHEETS STA. 2020+00 TO STA. 2035+00

F.A. RTE.	SECTION	COUNTY	TOTAL SHEETS	SHEET NO.
94	49-1-R-1	LAKE	677	394
CONTRACT NO. 60L77				
ILLINOIS FED. AID PROJECT				

E-34