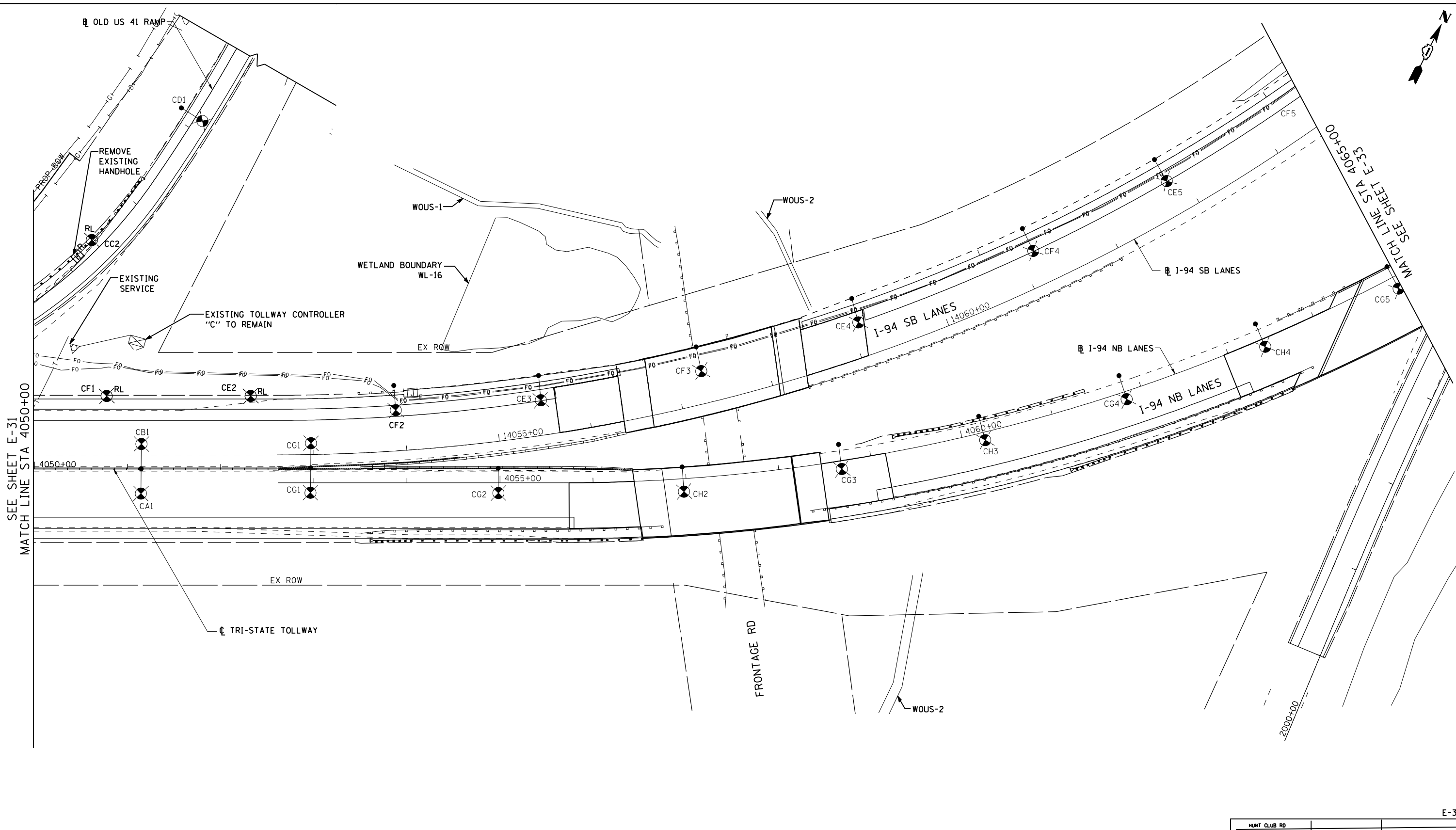


s:\projects\2012\11-1173 - bba\proj\set\work\disciplines\electrical\sheet\1173-1173-1173.dwg



NOTES
 1. ALL LIGHTING SHOWN ON THIS SHEET IS TOLLWAY-MAINTAINED.

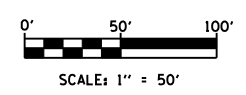
EJM ENGINEERING, INC.
 411 South Wells Street Suite 1000
 Chicago, Illinois 60607

FILE NAME	USER NAME = rsonson	DESIGNED - RAS	REVISED -
		DRAWN - BHH	REVISED -
		CHECKED - MKR	REVISED -
		DATE - 6/19/2012	REVISED -

**STATE OF ILLINOIS
 DEPARTMENT OF TRANSPORTATION**

**TOLLWAY LIGHTING AND RELOCATION PLAN
 I-94 FROM ROSECRANS RD TO STATE LINE**

SCALE: 1"=50' SHEET NO. 32 OF 53 SHEETS STA. 4050+00 TO STA. 4065+00



E-32

F.A. RTE.	SECTION	COUNTY	TOTAL SHEETS	SHEET NO.
94	49-1-R-1	LAKE	677	392
CONTRACT NO. 60L77				
ILLINOIS FED. AID PROJECT				