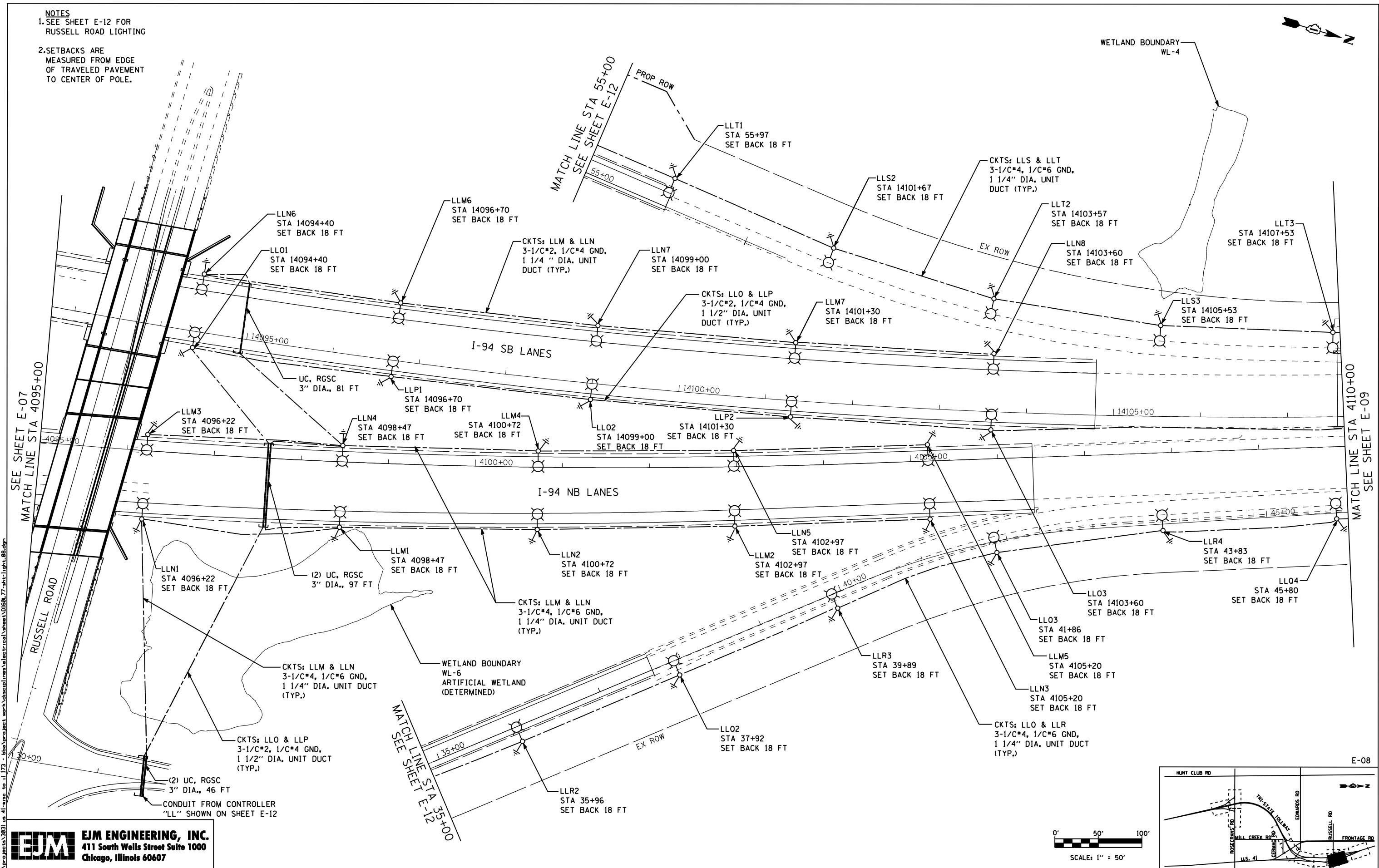
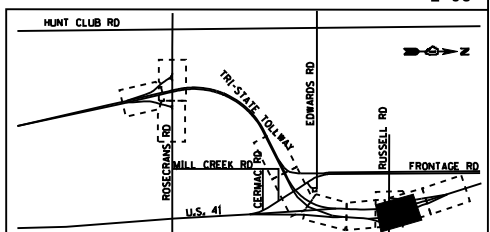
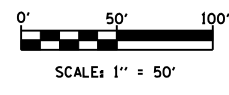


- NOTES**
- SEE SHEET E-12 FOR RUSSELL ROAD LIGHTING
 - SETBACKS ARE MEASURED FROM EDGE OF TRAVELED PAVEMENT TO CENTER OF POLE.



I:\projects\3931\p_41\mss_01173 - bba\project_work\disciplines\electrical\sheet\01666_77-int-light_08.dwg
 6/19/2012 10:41:55 AM

EJM ENGINEERING, INC.
 411 South Wells Street Suite 1000
 Chicago, Illinois 60607



| | | | |
|-----------|--------------------|------------------|-----------|
| FILE NAME | USER NAME: rsonson | DESIGNED - RAS | REVISED - |
| | | DRAWN - BHH | REVISED - |
| | | CHECKED - MKR | REVISED - |
| | | DATE - 6/19/2012 | REVISED - |

**STATE OF ILLINOIS
 DEPARTMENT OF TRANSPORTATION**

**PROPOSED IDOT LIGHTING PLAN
 I-94 FROM ROSECRANS RD TO STATE LINE**

SCALE: 1"=50' SHEET NO. 8 OF 53 SHEETS STA. 4095+00 TO STA. 4110+00

| | | | | |
|---------------------------|----------|--------|--------------|-----------|
| F.A. RTE. | SECTION | COUNTY | TOTAL SHEETS | SHEET NO. |
| 94 | 49-1-R-1 | LAKE | 677 | 368 |
| CONTRACT NO. 60L77 | | | | |
| ILLINOIS FED. AID PROJECT | | | | |