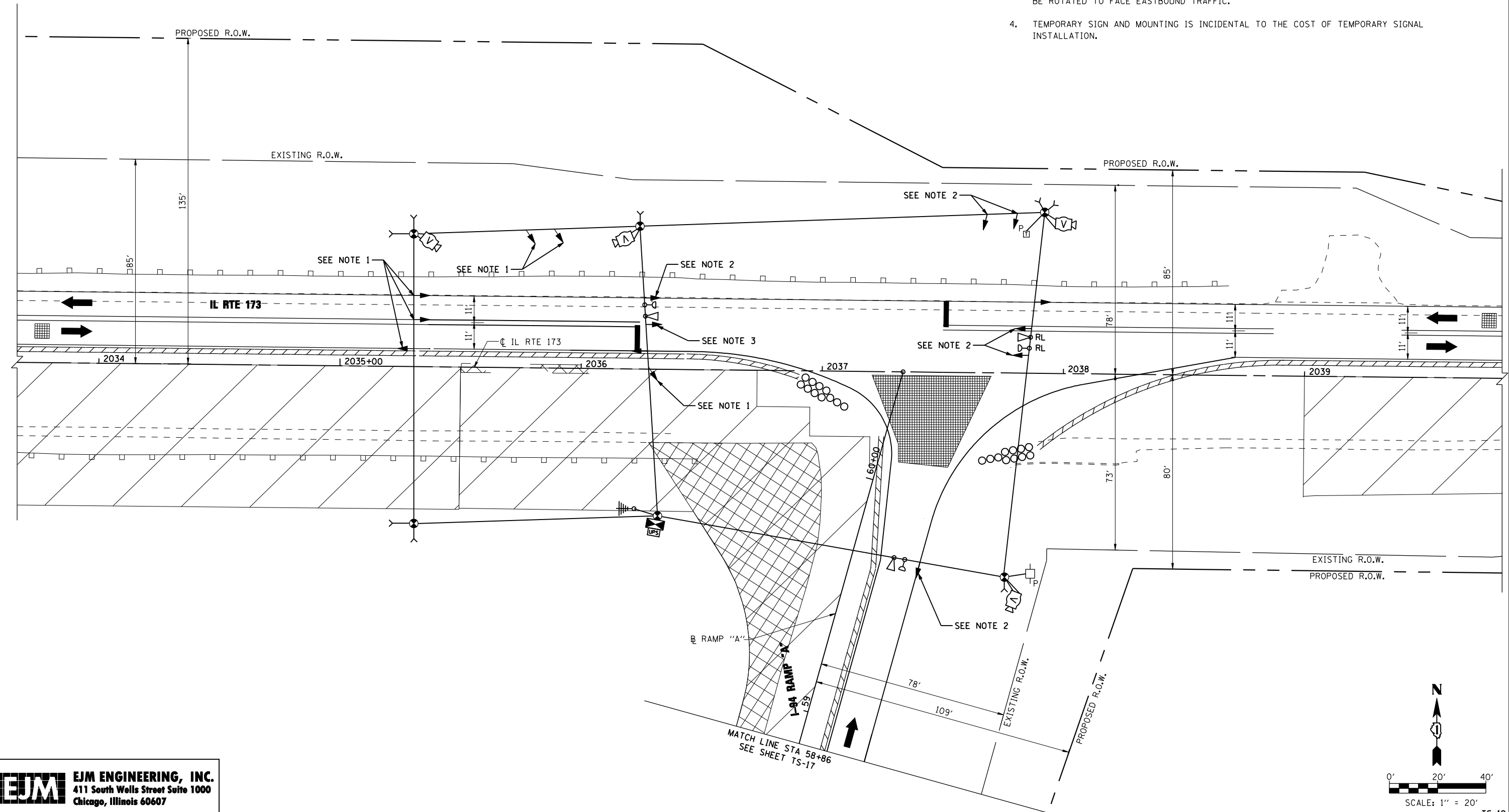



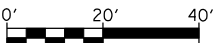
NOTES:

1. SIGNAL HEAD SHALL BE BAGGED AND DE-ENERGIZED PRIOR TO ACTIVATION OF THIS STAGE.
2. SIGNAL HEAD SHALL BE BAGGED AND DE-ENERGIZED AT THE END OF THIS STAGE, PRIOR TO BEGINNING OF STAGE 1C.
3. SIGNAL HEAD SHALL BE ROTATED TO FACE WESTBOUND TRAFFIC DURING THIS STAGE. AT THE END OF THIS STAGE AND PRIOR TO BEGINNING OF STAGE 1C, SIGNAL HEAD SHALL BE ROTATED TO FACE EASTBOUND TRAFFIC.
4. TEMPORARY SIGN AND MOUNTING IS INCIDENTAL TO THE COST OF TEMPORARY SIGNAL INSTALLATION.



s:\projects\3021.us_41-usa_to_il_173 - bba\proj\sect_work\disuplines\tr-offic_signals\sheet\01606L77-sh1-ts_19.dgn


EJM ENGINEERING, INC.
 411 South Wells Street Suite 1000
 Chicago, Illinois 60607



 SCALE: 1" = 20'

FILE NAME =	USER NAME = grai	DESIGNED - GR	REVISED -
		DRAWN - GR	REVISED -
	PLOT SCALE = 40,0000' / IN.	CHECKED - BKS	REVISED -
	PLOT DATE = 6/18/2012	DATE - 06/19/2012	REVISED -

**STATE OF ILLINOIS
 DEPARTMENT OF TRANSPORTATION**

**TEMPORARY TRAFFIC SIGNAL INSTALLATION
 IL RTE 173 AT I-94 RAMP "A" - STAGE 1B**

SCALE: 1" = 20' SHEET NO. 1 OF 2 SHEETS STA. 2033+67 TO STA. 2039+83

F.A.I. RTE.	SECTION	COUNTY	TOTAL SHEETS	SHEET NO.
94	49-1-R-1	LAKE	677	350
CONTRACT NO. 60L77			ILLINOIS FED. AID PROJECT	

TS-19