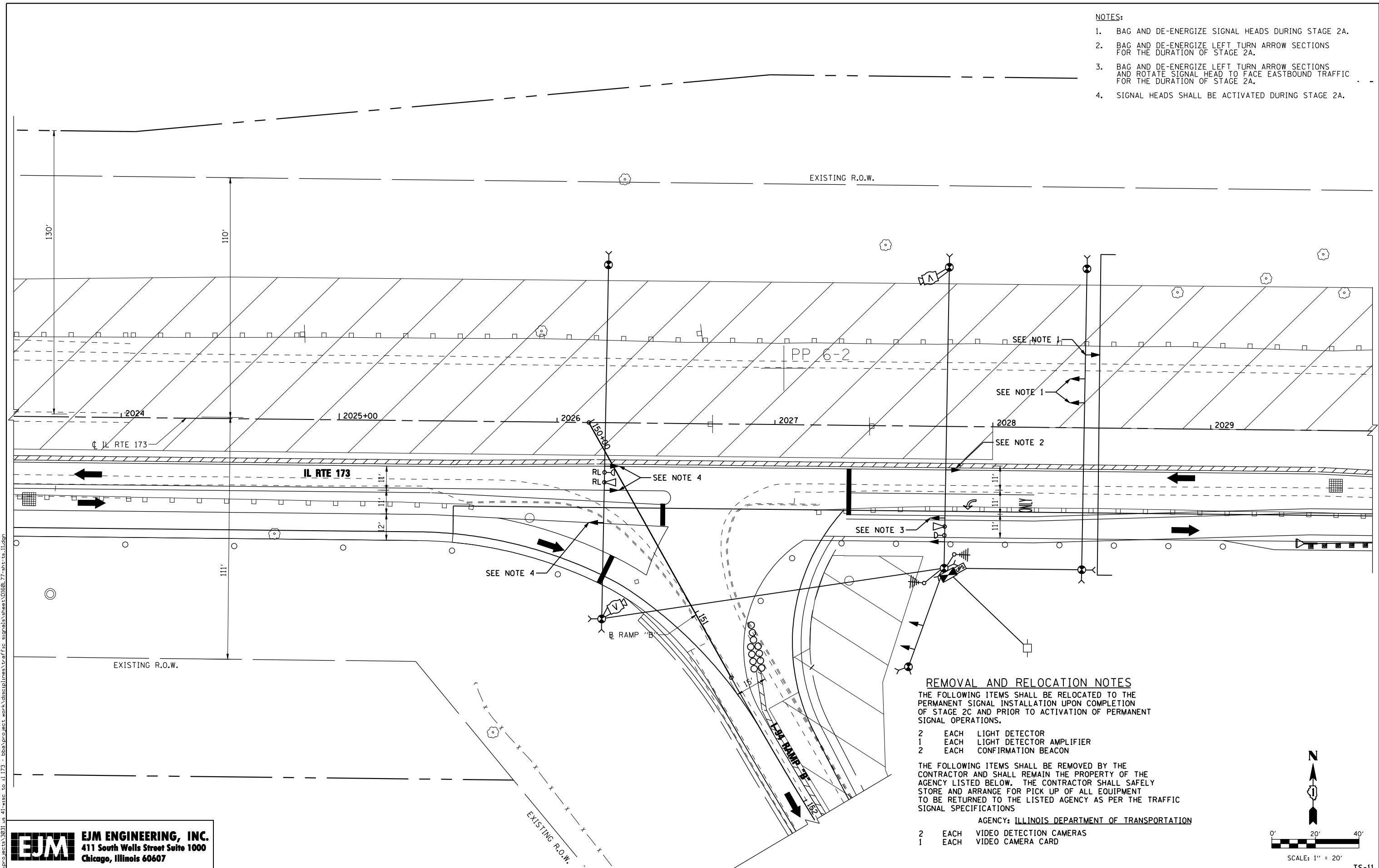


NOTES:

1. BAG AND DE-ENERGIZE SIGNAL HEADS DURING STAGE 2A.
2. BAG AND DE-ENERGIZE LEFT TURN ARROW SECTIONS FOR THE DURATION OF STAGE 2A.
3. BAG AND DE-ENERGIZE LEFT TURN ARROW SECTIONS AND ROTATE SIGNAL HEAD TO FACE EASTBOUND TRAFFIC FOR THE DURATION OF STAGE 2A.
4. SIGNAL HEADS SHALL BE ACTIVATED DURING STAGE 2A.



REMOVAL AND RELOCATION NOTES

THE FOLLOWING ITEMS SHALL BE RELOCATED TO THE PERMANENT SIGNAL INSTALLATION UPON COMPLETION OF STAGE 2C AND PRIOR TO ACTIVATION OF PERMANENT SIGNAL OPERATIONS.

- 2 EACH LIGHT DETECTOR
- 1 EACH LIGHT DETECTOR AMPLIFIER
- 2 EACH CONFIRMATION BEACON

THE FOLLOWING ITEMS SHALL BE REMOVED BY THE CONTRACTOR AND SHALL REMAIN THE PROPERTY OF THE AGENCY LISTED BELOW. THE CONTRACTOR SHALL SAFELY STORE AND ARRANGE FOR PICK UP OF ALL EQUIPMENT TO BE RETURNED TO THE LISTED AGENCY AS PER THE TRAFFIC SIGNAL SPECIFICATIONS

- AGENCY: ILLINOIS DEPARTMENT OF TRANSPORTATION
- 2 EACH VIDEO DETECTION CAMERAS
- 1 EACH VIDEO CAMERA CARD

s:\projects\3021.us_41-usa_to_il_173 - bba\p\sect_work\disuplines\tr-offic_signals\sheet\06L77-sht-ts-11.dgn

EJM ENGINEERING, INC.
 411 South Wells Street Suite 1000
 Chicago, Illinois 60607

FILE NAME =	USER NAME = gra1	DESIGNED - GR	REVISED -
		DRAWN - GR	REVISED -
	PLOT SCALE = 40,0000' / IN.	CHECKED - BKS	REVISED -
	PLOT DATE = 6/18/2012	DATE - 06/19/2012	REVISED -

**STATE OF ILLINOIS
 DEPARTMENT OF TRANSPORTATION**

**TEMPORARY TRAFFIC SIGNAL INSTALLATION
 IL RTE 173 AT I-94 RAMP "B" - STAGE 2A**

SCALE: 1" = 20' SHEET NO. 1 OF 1 SHEETS STA. 2023+52 TO STA. 2029+75

F.A.I. RTE.	SECTION	COUNTY	TOTAL SHEETS	SHEET NO.
94	49-1-R-1	LAKE	677	342
CONTRACT NO. 60L77			ILLINOIS FED. AID PROJECT	

TS-11