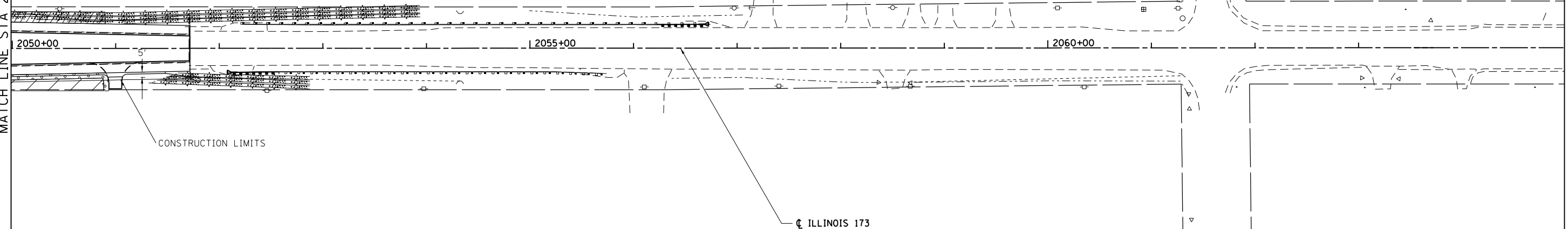



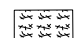
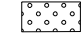
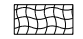
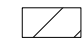
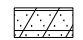
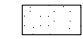



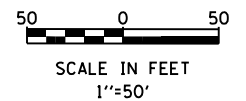
MATCH LINE STA 2050+00

MATCH LINE STA 2065+00



**LEGEND**

- |   |  |   |  |
|---|--|---|--|
|  | SODDING, SALT TOLERANT (25200110)  |  | SEEDING, CLASS 2E (JS250220)<br>MULCH, METHOD 1 (25100105)<br>EROSION CONTROL BLANKET (25100630)<br>TOPSOIL EXCAVATION AND PLACE (1 FT) (21101505) |
|  | SEEDING, CLASS 2A (25000210)<br>MULCH, METHOD 1 (25100105)<br>EROSION CONTROL BLANKET (25100630)<br>TOPSOIL EXCAVATION AND PLACE (1 FT) (21101505) |  | SEEDING, CLASS 4F (JS250318)<br>MULCH, METHOD 1 (25100105)<br>EROSION CONTROL BLANKET (25100630)<br>TOPSOIL EXCAVATION AND PLACE (1 FT) (21101505) |
|  | SEEDING, CLASS 4 (25000310)<br>MULCH, METHOD 1 (25100105)<br>EROSION CONTROL BLANKET (25100630)<br>TOPSOIL EXCAVATION AND PLACE (1 FT) (21101505)  |  | SEEDING, CLASS 2A (25000210)<br>TOPSOIL FURNISH AND PLACE, 24" (21101685)  |
|  | SEEDING, CLASS 4A (25000312)<br>MULCH, METHOD 1 (25100105)<br>EROSION CONTROL BLANKET (25100630)<br>TOPSOIL EXCAVATION AND PLACE (1 FT) (21101505) |  | PROPOSED TREE  |



BOWMAN, BARRETT & ASSOCIATES INC.  
CONSULTING ENGINEERS  
Chicago, Illinois  
312.228.0100  
www.bbandainc.com



FILE NAME = \$FILES\$	USER NAME = default	DESIGNED - PTG	REVISED -
		DRAWN - PTG	REVISED -
	PLOT SCALE = Hgt=10' Wdt=5'	CHECKED - RGR	REVISED -
	PLOT DATE = 6/20/2012	DATE - 6/19/2012	REVISED -

**STATE OF ILLINOIS  
DEPARTMENT OF TRANSPORTATION**

**LANDSCAPING PLAN IL RTE 173**

SCALE: 1"=50' SHEET NO. 15 OF 15 SHEETS STA. 2050+00 TO STA. 2065+00

F.A. RTE.	SECTION	COUNTY	TOTAL SHEETS	SHEET NO.
94	49-1-R-1	LAKE	677	319
CONTRACT NO. 60L77				
ILLINOIS FED. AID PROJECT				

S:\1101\95-CADD\60L77\_IL\_173\60L77\_Sheets\160L77-shr-landscp15.dgn