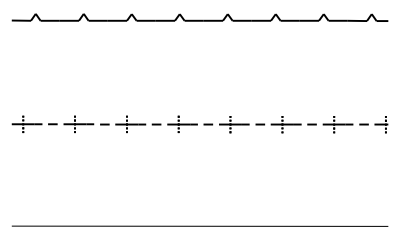


**LEGEND:**



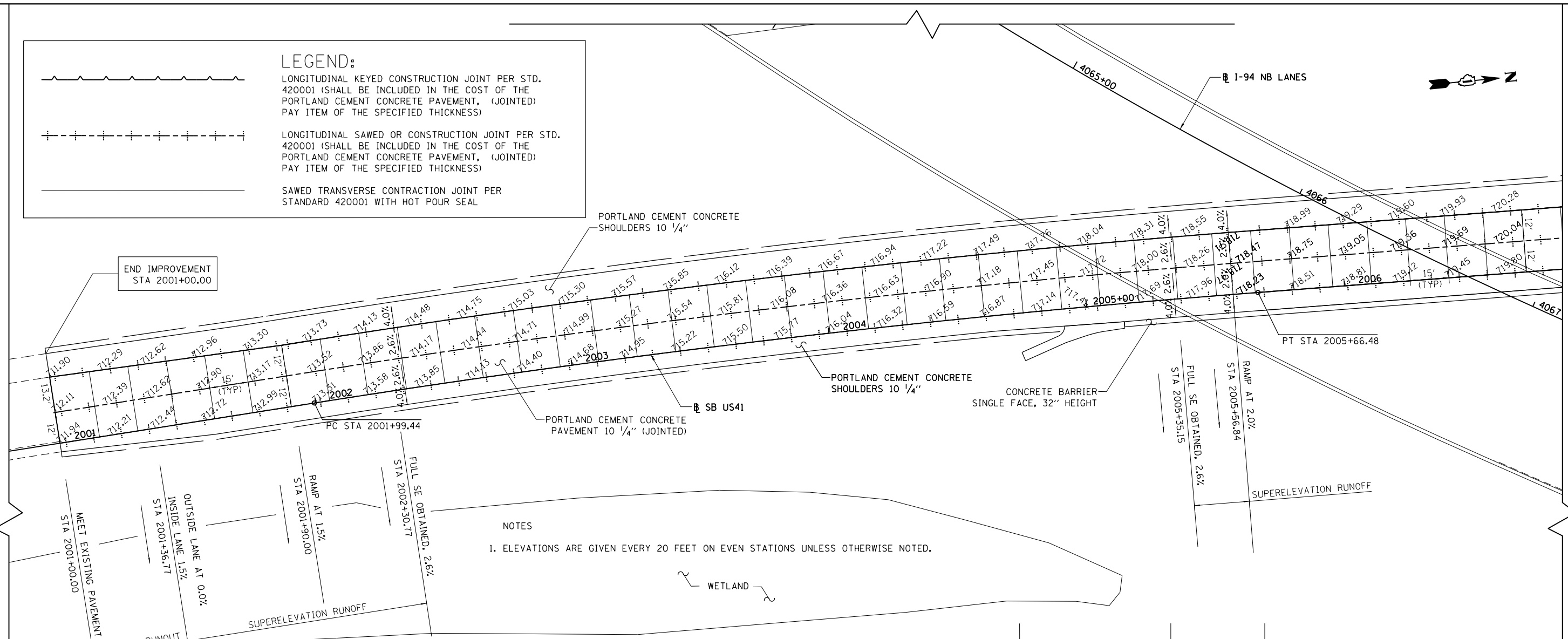
LONGITUDINAL KEYED CONSTRUCTION JOINT PER STD. 420001 (SHALL BE INCLUDED IN THE COST OF THE PORTLAND CEMENT CONCRETE PAVEMENT, (JOINTED) PAY ITEM OF THE SPECIFIED THICKNESS)

LONGITUDINAL SAWED OR CONSTRUCTION JOINT PER STD. 420001 (SHALL BE INCLUDED IN THE COST OF THE PORTLAND CEMENT CONCRETE PAVEMENT, (JOINTED) PAY ITEM OF THE SPECIFIED THICKNESS)

SAWED TRANSVERSE CONTRACTION JOINT PER STANDARD 420001 WITH HOT POUR SEAL



END IMPROVEMENT  
STA 2001+00.00



**NOTES**  
1. ELEVATIONS ARE GIVEN EVERY 20 FEET ON EVEN STATIONS UNLESS OTHERWISE NOTED.



MEET EXISTING PAVEMENT  
STA 2001+00.00

OUTSIDE LANE AT 0.0%  
INSIDE LANE 1.5%  
STA 2001+36.77

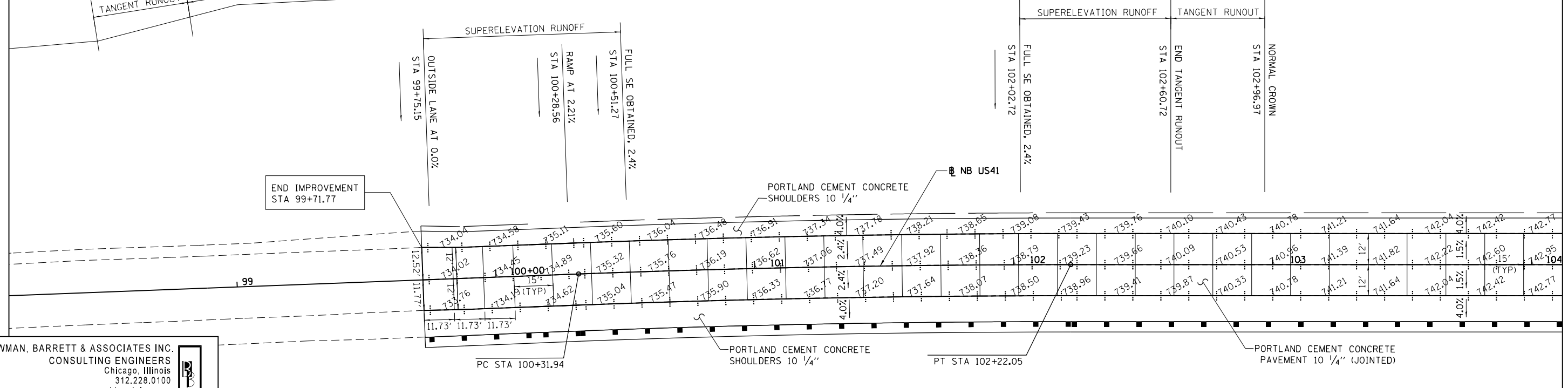
RAMP AT 1.5%  
STA 2001+90.00

FULL SE OBTAINED, 2.6%  
STA 2002+30.77

TANGENT RUNOUT

SUPERELEVATION RUNOFF

END IMPROVEMENT  
STA 99+71.77



**BOWMAN, BARRETT & ASSOCIATES INC.**  
CONSULTING ENGINEERS  
Chicago, Illinois  
312.228.0100  
www.bbandainc.com

FILE NAME = #FILES#	USER NAME = default	DESIGNED - JMG	REVISED -
		DRAWN - JMG	REVISED -
		CHECKED - RGR	REVISED -
		DATE - 6/19/2012	REVISED -

**STATE OF ILLINOIS  
DEPARTMENT OF TRANSPORTATION**

**US41 JOINTING PLAN**

SCALE: 1" = 20' SHEET NO. 10 OF 17 SHEETS STA. NA TO STA. NA

F.A. RTE.	SECTION	COUNTY	TOTAL SHEETS	SHEET NO.
94	49-1-R-1	LAKE	677	237
CONTRACT NO. 60L77				
ILLINOIS FED. AID PROJECT				

S:\1101\95\CADD\60L77 IL 175\60L77 Sheets\1101\95\60L77-10-175-jointing10.dgn