

SB I-94 & SB US41 ENTRANCE RAMP
GORE SPOT ELEVATIONS

PT	STATION	OFFSET	ELEV.
A	2011+45.19	36.95' LT	729.26
B	2011+60.00	35.94' LT	729.28
C	2011+80.00	34.59' LT	729.37
D	2012+00.00	33.23' LT	729.44
E	2012+20.00	31.87' LT	729.51
F	2012+40.00	30.51' LT	729.55
G	2012+60.00	29.16' LT	729.59
H	2012+80.00	27.80' LT	729.63
I	2012+92.05	26.98' LT	729.64

NOTES

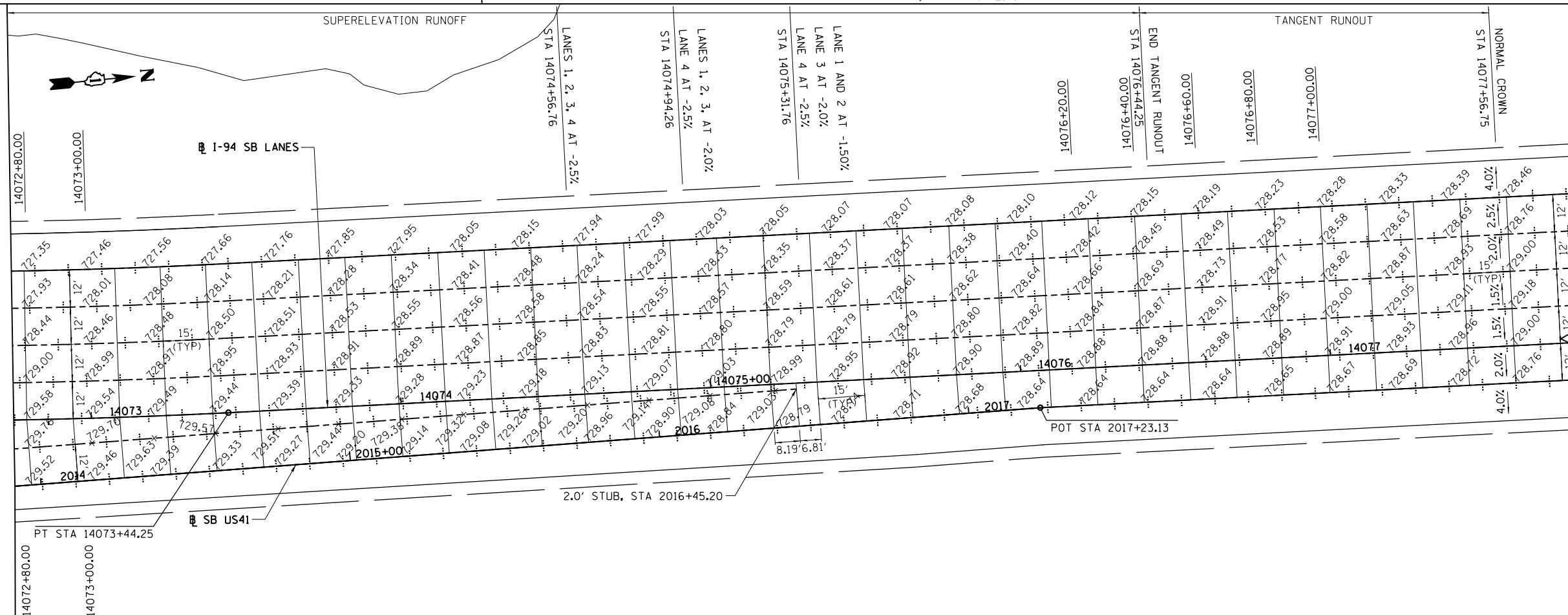
- ELEVATIONS ARE GIVEN EVERY 20 FEET ON EVEN STATIONS UNLESS OTHERWISE NOTED.
- SB US41 EXIT RAMP PAVEMENT ELEVATIONS ARE BASED ON SB US41 FROM 2011+00.00 TO 2013+20.00.
- SEE IDOT STANDARD 420301-04 FOR ADDITIONAL INFORMATION ON EXIT RAMP JOINTING DETAILS.

LEGEND:

LONGITUDINAL KEYPED CONSTRUCTION JOINT PER STD. 420001 (SHALL BE INCLUDED IN THE COST OF THE PORTLAND CEMENT CONCRETE PAVEMENT, (JOINTED) PAY ITEM OF THE SPECIFIED THICKNESS)

LONGITUDINAL SAWED OR CONSTRUCTION JOINT PER STD. 420001 (SHALL BE INCLUDED IN THE COST OF THE PORTLAND CEMENT CONCRETE PAVEMENT, (JOINTED) PAY ITEM OF THE SPECIFIED THICKNESS)

SAWED TRANSVERSE CONTRACTION JOINT PER STANDARD 420001 WITH HOT POUR SEAL



BOWMAN, BARRETT & ASSOCIATES INC.
CONSULTING ENGINEERS
Chicago, Illinois
312.228.0100
www.bbandainc.com

FILE NAME = #FILES#	USER NAME = default	DESIGNED - JMG	REVISED -	STATE OF ILLINOIS DEPARTMENT OF TRANSPORTATION	I-94 JOINTING PLAN			F.A. RTE. 94	SECTION 49-1-R-1	COUNTY LAKE	TOTAL SHEETS 677	SHEET NO. 234
	PLOT SCALE = H1"=10' V1"=5'	CHECKED - RGR	REVISED -		SCALE: 1" = 20'	SHEET NO. 7 OF 17 SHEETS	STA. NA TO STA. NA	CONTRACT NO. 60L77				
	PLOT DATE = 6/20/2012	DATE - 6/19/2012	REVISED -		ILLINOIS FED. AID PROJECT							

MATCH LINE STA 14072+75.00

MATCH LINE STA 14072+75.00

S:\1101\95\CADD\60L77 IL 175\60L77 Sheets\160L77-INT-jointing97.dgn