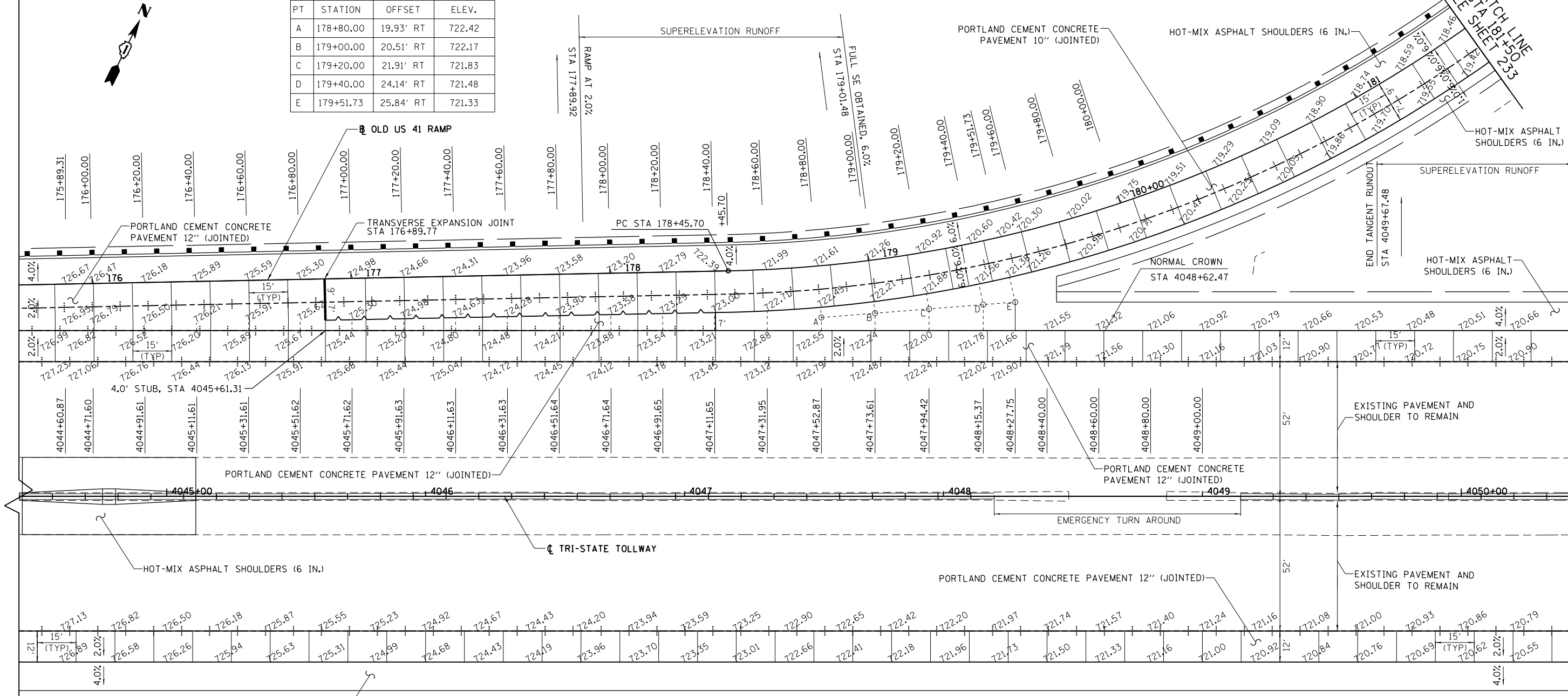




RAMP A OLD US41 GORE SPOT ELEVATIONS

| PT | STATION | OFFSET | ELEV. |
|----|-----------|-----------|--------|
| A | 178+80.00 | 19.93' RT | 722.42 |
| B | 179+00.00 | 20.51' RT | 722.17 |
| C | 179+20.00 | 21.91' RT | 721.83 |
| D | 179+40.00 | 24.14' RT | 721.48 |
| E | 179+51.73 | 25.84' RT | 721.33 |



- NOTES
- ELEVATIONS ARE GIVEN EVERY 20 FEET ON EVEN STATIONS UNLESS OTHERWISE NOTED.
 - EXISTING PAVEMENT ELEVATIONS SHOWN ON LANE 3 EDGE LINE WERE DETERMINED WITH SURVEY DATA AND SHALL BE ADJUSTED IN THE FIELD BASED ON EXISTING EDGE OF PAVEMENT.
 - PROPOSED JOINTING SHALL MATCH JOINTING OF ADJACENT EXISTING LANE.
 - SEE ISTHA STANDARD A14-00 FOR ADDITIONAL INFORMATION ON ENTRANCE RAMP JOINTING DETAILS.

LEGEND:

- LONGITUDINAL KEYPED CONSTRUCTION JOINT PER STD. 420001 (SHALL BE INCLUDED IN THE COST OF THE PORTLAND CEMENT CONCRETE PAVEMENT, (JOINTED) PAY ITEM OF THE SPECIFIED THICKNESS)
- LONGITUDINAL SAWED OR CONSTRUCTION JOINT PER STD. 420001 (SHALL BE INCLUDED IN THE COST OF THE PORTLAND CEMENT CONCRETE PAVEMENT, (JOINTED) PAY ITEM OF THE SPECIFIED THICKNESS)
- SAWED TRANSVERSE CONTRACTION JOINT PER STANDARD 420001 WITH HOT POUR SEAL

BOWMAN, BARRETT & ASSOCIATES INC.
 CONSULTING ENGINEERS
 Chicago, Illinois
 312.228.0100
 www.bbandainc.com

| | | | |
|-----------------------|---------------------|------------------|-----------|
| FILE NAME = \$FILES\$ | USER NAME = default | DESIGNED - JMG | REVISED - |
| | | DRAWN - JMG | REVISED - |
| | | CHECKED - RGR | REVISED - |
| | | DATE - 6/19/2012 | REVISED - |

**STATE OF ILLINOIS
 DEPARTMENT OF TRANSPORTATION**

I-94 JOINTING PLAN

SCALE: 1" = 20' SHEET NO. 4 OF 17 SHEETS STA. NA TO STA. NA

| | | | | |
|---------------------------|----------|--------|--------------|-----------|
| F.A. RTE. | SECTION | COUNTY | TOTAL SHEETS | SHEET NO. |
| 94 | 49-1-R-1 | LAKE | 677 | 231 |
| CONTRACT NO. 60L77 | | | | |
| ILLINOIS FED. AID PROJECT | | | | |

MATCH LINE STA 4051+50

S:\1101\95\CADD\60L77_IL_173\60L77_Sheets\0160L77-INT-jointing94.dgn