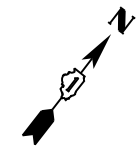
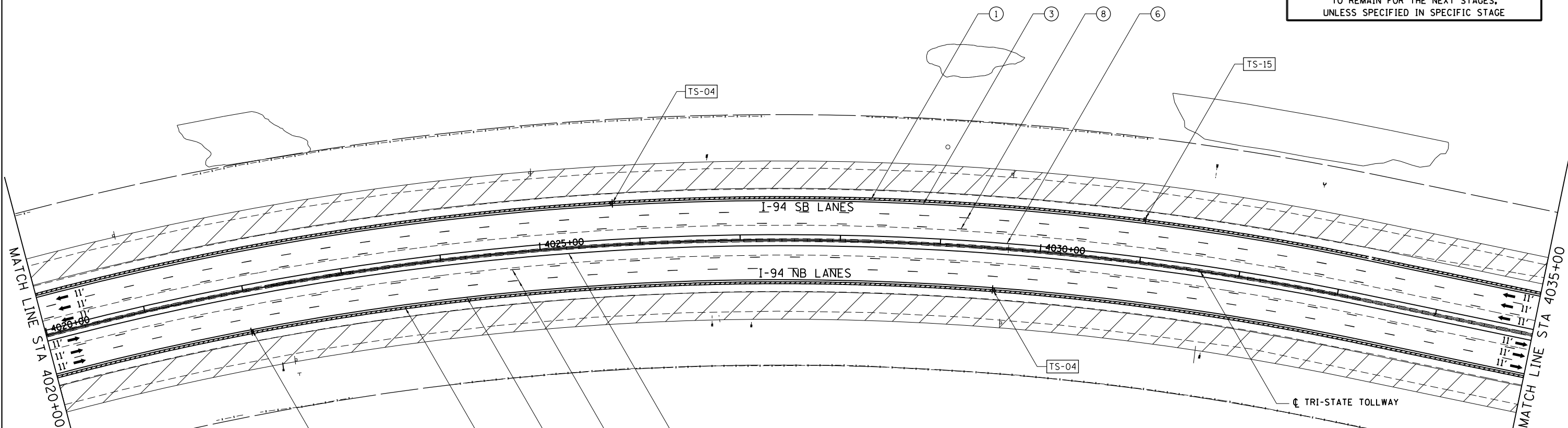


MAINTENANCE OF TRAFFIC SIGNING

WORK ZONE W2-I115(0)-3618
 SPEED LIMIT 45 R2-1
 TRUCKS USE 2 RIGHT LANES
 R2-I106-3618
 TS-04 TS-15



NB ANB SB I-94 TEMPORARY PAVEMENT MARKINGS TO REMAIN FOR THE NEXT STAGES, UNLESS SPECIFIED IN SPECIFIC STAGE



LEGEND

- ← L1 LANE NUMBER AND DIRECTION OF TRAFFIC
- ┆ TYPE III BARRICADE
- ○ DRUMS AT 50'C-C WITH BIDIRECTIONAL BURNING LIGHT
- ▨ TEMPORARY PAVEMENT
- ▨ WORKZONE
- ① TEMPORARY CONCRETE BARRIER WITH BARRIER WALL MARKERS, TYPE C
- ② RELOCATE TEMPORARY CONCRETE BARRIER
- ③ PAVEMENT MARKING TAPE, TYPE III 4" WHITE
- ④ PAVEMENT MARKING TAPE, TYPE III 4" WHITE, 2' DASH 6' SKIP
- ⑤ PAVEMENT MARKING TAPE, TYPE III 4" YELLOW, DOUBLE LINE
- ⑥ PAVEMENT MARKING TAPE, TYPE III 4" YELLOW
- ⑦ PAVEMENT MARKING TAPE, TYPE III 5" WHITE, 10' DASH 30' SKIP
- ⑧ PAVEMENT MARKING TAPE, TYPE III 4" WHITE, 25' DASH 25' SKIP
- ⑨ PAVEMENT MARKING TAPE, TYPE III 8" WHITE
- ⑪ PAVEMENT MARKING TAPE, TYPE III 12" WHITE
- ⑫ PAVEMENT MARKING TAPE, TYPE III 24" WHITE
- ⑬ IMPACT ATTENUATORS, TEMPORARY (FULLY REDIRECTIVE, NARROW), TEST LEVEL 3
- ⑭ IMPACT ATTENUATORS, RELOCATE (FULLY REDIRECTIVE, NARROW), TEST LEVEL 3
- ⑮ IMPACT ATTENUATORS, TEMPORARY (NON-REDIRECTIVE), TEST LEVEL 3
- ⑯ IMPACT ATTENUATORS, RELOCATE (NON-REDIRECTIVE), TEST LEVEL 3
- ⑰ IMPACT ATTENUATORS, TEMPORARY (FULLY REDIRECTIVE, WIDE), TEST LEVEL 3
- ⑱ IMPACT ATTENUATORS, RELOCATE (FULLY REDIRECTIVE), TEST LEVEL 3

BOWMAN, BARRETT & ASSOCIATES INC.
 CONSULTING ENGINEERS
 Chicago, Illinois
 312.228.0100
 www.bbandainc.com



FILE NAME = \$FILES\$	USER NAME = default	DESIGNED -	REVISED -
		DRAWN - RA	REVISED -
	PLOT SCALE = H=1"=10' V=1"=5'	CHECKED - RGR	REVISED -
	PLOT DATE = 6/20/2012	DATE - 6/19/2012	REVISED -

STATE OF ILLINOIS
 DEPARTMENT OF TRANSPORTATION

MOT PLAN NB I-94 AND SB I-94 - STAGE 1A

SCALE: 1"=50' SHEET NO. 5 OF 33 SHEETS STA. 4020+00 TO STA. 4035+00

F.A. RTE.	SECTION	COUNTY	TOTAL SHEETS	SHEET NO.
94	49-1-R-1	LAKE	677	113
CONTRACT NO. 60L77				
ILLINOIS FED. AID PROJECT				

S:\1101\95\CADD\60L77_IL_173\60L77_Sheets\1160L77-ht-staging05.lgd