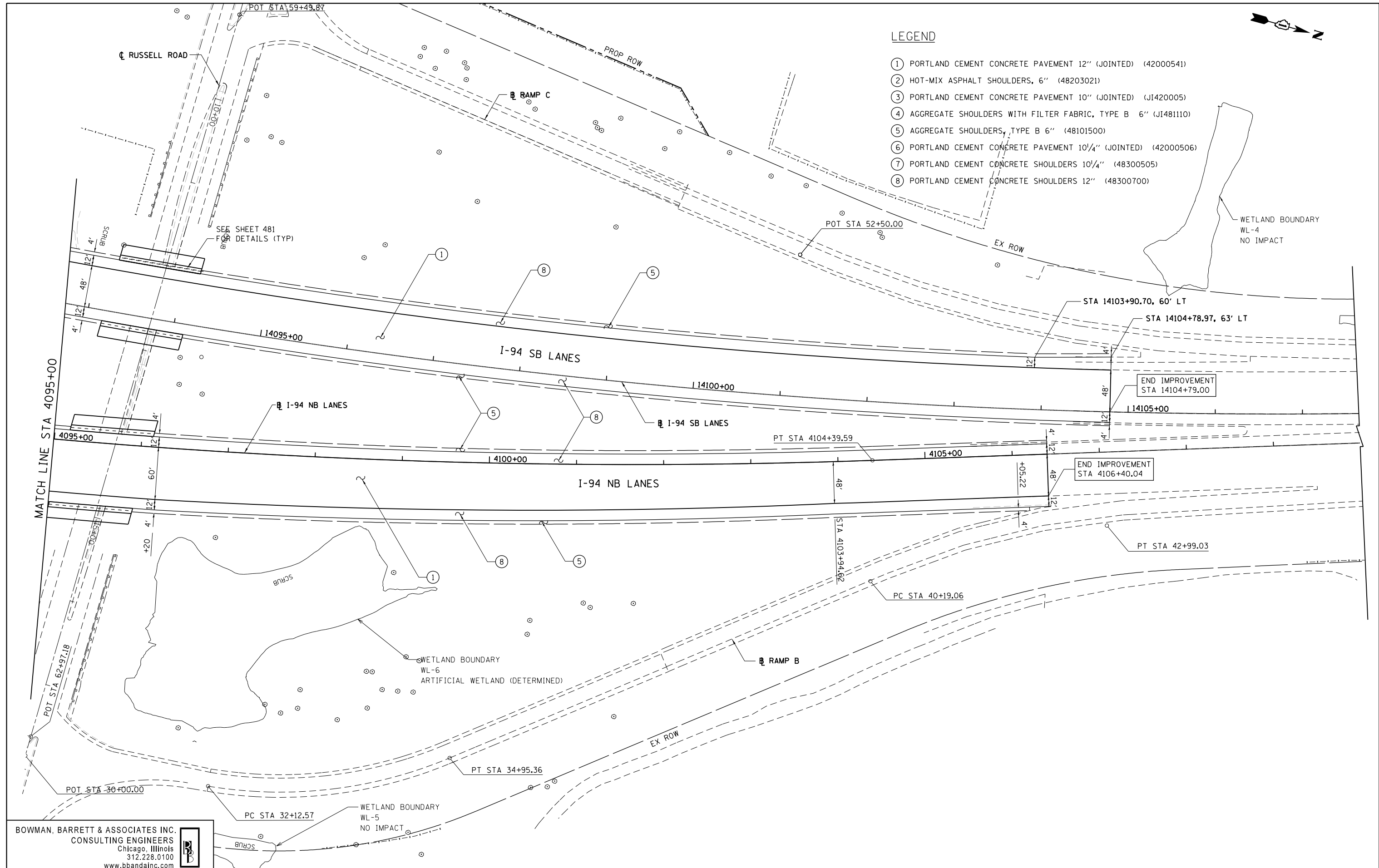




**LEGEND**

- ① PORTLAND CEMENT CONCRETE PAVEMENT 12" (JOINTED) (42000541)
- ② HOT-MIX ASPHALT SHOULDERS, 6" (48203021)
- ③ PORTLAND CEMENT CONCRETE PAVEMENT 10" (JOINTED) (J1420005)
- ④ AGGREGATE SHOULDERS WITH FILTER FABRIC, TYPE B 6" (J1481110)
- ⑤ AGGREGATE SHOULDERS, TYPE B 6" (48101500)
- ⑥ PORTLAND CEMENT CONCRETE PAVEMENT 10 1/4" (JOINTED) (42000506)
- ⑦ PORTLAND CEMENT CONCRETE SHOULDERS 10 1/4" (48300505)
- ⑧ PORTLAND CEMENT CONCRETE SHOULDERS 12" (48300700)



**BOWMAN, BARRETT & ASSOCIATES INC.**  
 CONSULTING ENGINEERS  
 Chicago, Illinois  
 312.228.0100  
 www.bbandainc.com

FILE NAME = \$FILES\$	USER NAME = default	DESIGNED - JDC	REVISED -
		DRAWN - JDC	REVISED -
	PLOT SCALE = H=1"=10' V=1"=5'	CHECKED - RGR	REVISED -
	PLOT DATE = 6/20/2012	DATE - 6/19/2012	REVISED -

**STATE OF ILLINOIS  
 DEPARTMENT OF TRANSPORTATION**

**PROPOSED ROAD PLAN NB I-94 AND SB I-94**

SCALE: 1"=50' SHEET NO. 9 OF 9 SHEETS STA. 4095+00 TO STA. 4110+00

F.A. RTE.	SECTION	COUNTY	TOTAL SHEETS	SHEET NO.
94	49-1-R-1	LAKE	677	78
CONTRACT NO. 60L77				
ILLINOIS FED. AID PROJECT				

S:\1101\95\CADD\60L77\_IL\_175\60L77\_Sheets\166L77-INT-plan10.dgn