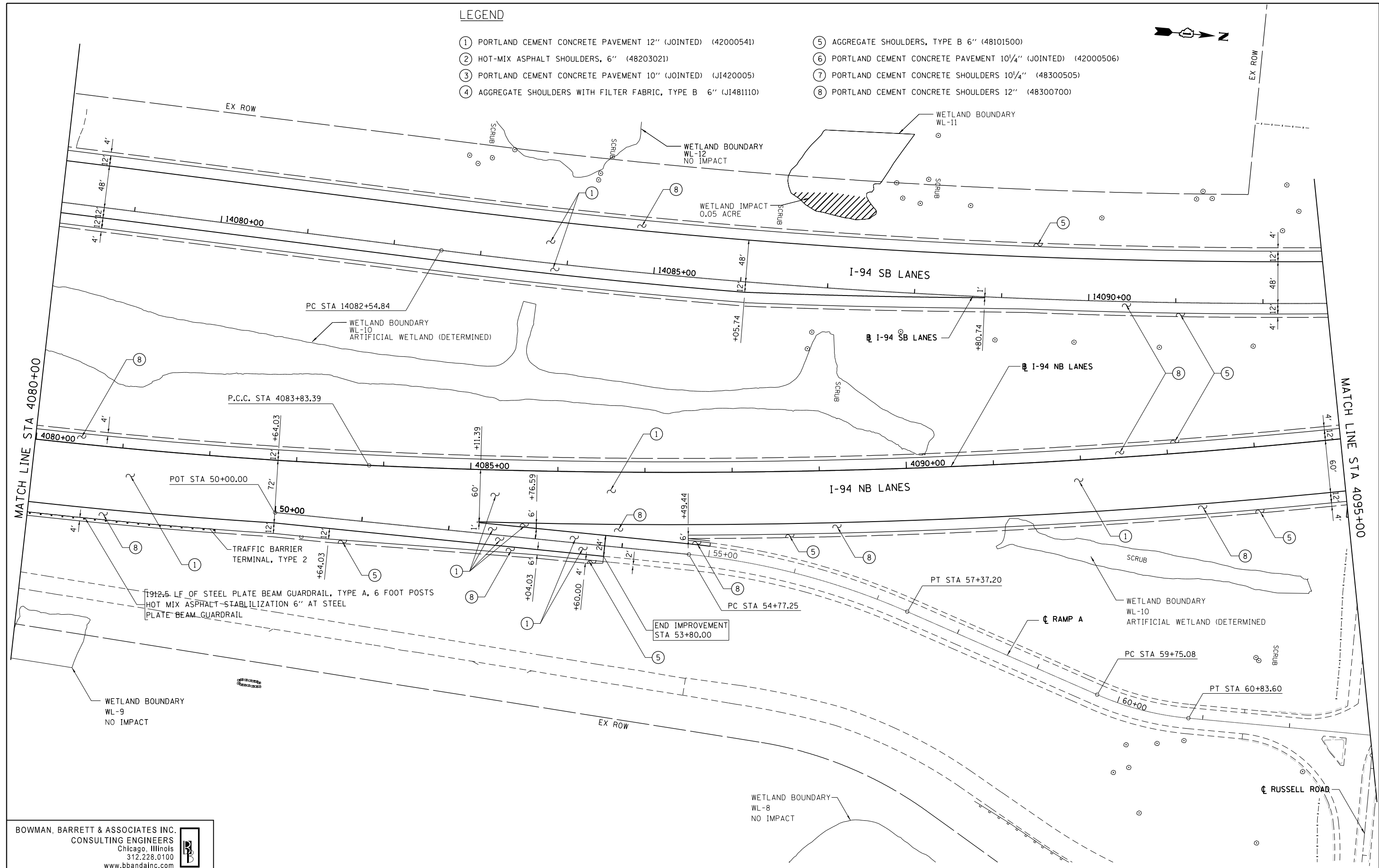


LEGEND

- ① PORTLAND CEMENT CONCRETE PAVEMENT 12" (JOINTED) (42000541)
- ② HOT-MIX ASPHALT SHOULDERS, 6" (48203021)
- ③ PORTLAND CEMENT CONCRETE PAVEMENT 10" (JOINTED) (J1420005)
- ④ AGGREGATE SHOULDERS WITH FILTER FABRIC, TYPE B 6" (J1481110)
- ⑤ AGGREGATE SHOULDERS, TYPE B 6" (48101500)
- ⑥ PORTLAND CEMENT CONCRETE PAVEMENT 10 1/4" (JOINTED) (42000506)
- ⑦ PORTLAND CEMENT CONCRETE SHOULDERS 10 1/4" (48300505)
- ⑧ PORTLAND CEMENT CONCRETE SHOULDERS 12" (48300700)



BOWMAN, BARRETT & ASSOCIATES INC.
 CONSULTING ENGINEERS
 Chicago, Illinois
 312.228.0100
 www.bbandainc.com

| | | | | | | | | | | | | |
|---------------------------|-----------------------------|------------------|-----------|---|--|--|--|--------------------|------------------|-------------|------------------|--------------|
| FILE NAME = \$FILES\$ | USER NAME = default | DESIGNED - JDC | REVISED - | STATE OF ILLINOIS DEPARTMENT OF TRANSPORTATION | PROPOSED ROAD PLAN NB I-94 AND SB I-94 | | | F.A. RTE. 94 | SECTION 49-1-R-1 | COUNTY LAKE | TOTAL SHEETS 677 | SHEET NO. 77 |
| | PLOT SCALE = Hgt=10' Vht=5' | CHECKED - RGR | REVISED - | | SCALE: 1"=50' SHEET NO. 8 OF 9 SHEETS STA. 4080+00 TO STA. 4095+00 | | | CONTRACT NO. 60L77 | | | | |
| | PLOT DATE = 6/20/2012 | DATE - 6/19/2012 | REVISED - | | ILLINOIS FED. AID PROJECT | | | | | | | |
| ILLINOIS FED. AID PROJECT | | | | | | | | | | | | |

S:\1101\95\CADD\60L77 IL 175\60L77 Sheets\166L77-nht-plan8.dwg