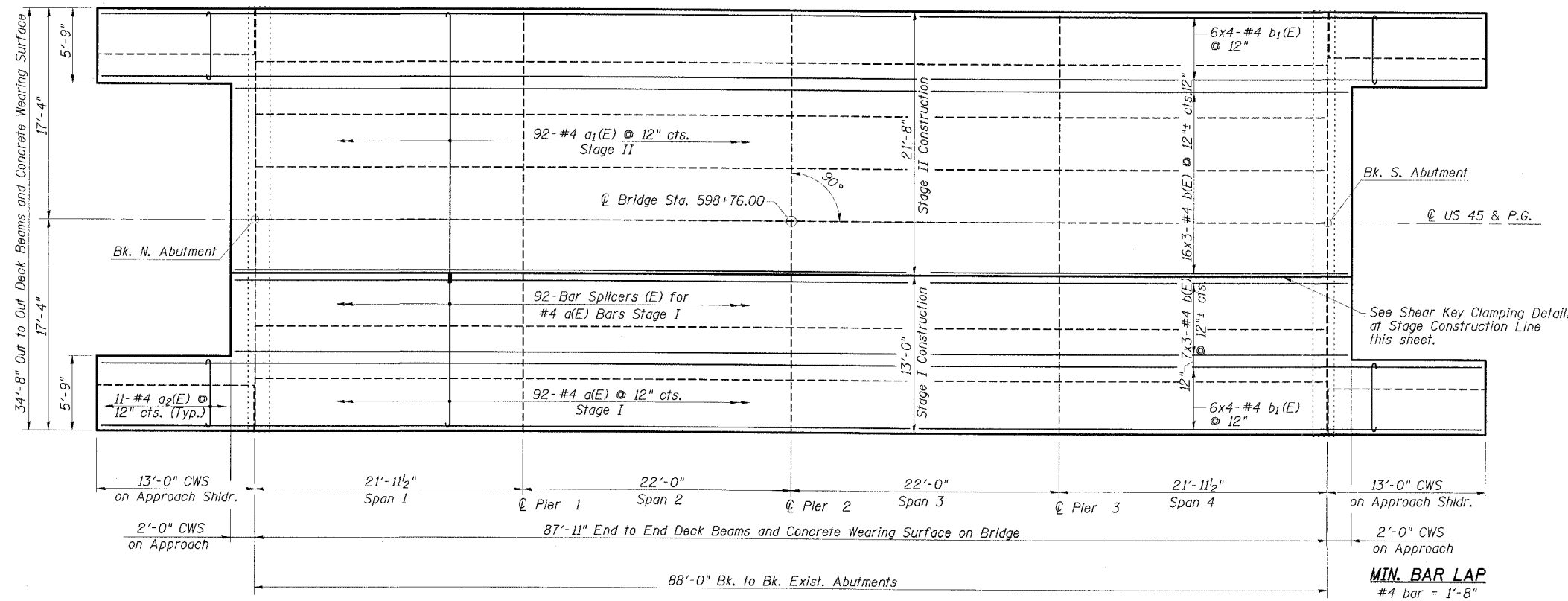


STATE OF ILLINOIS  
DEPARTMENT OF TRANSPORTATION

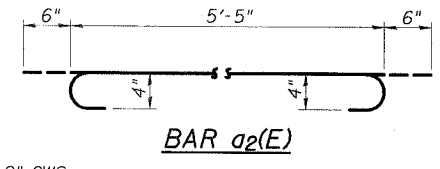
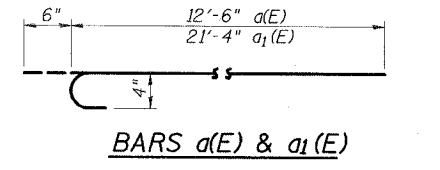
ROUTE NO.	SECTION	COUNTY	LISTED SHEETS	SHEET NO.	SHEET NO. 5 17 SHEETS
FAP 328	*	WHITE	42	16	
PROJ. ROAD DIST. NO.	ILLINOIS	FED. AID PROJECT			

98997 \*105X1BR



CONCRETE WEARING SURFACE  
BILL OF MATERIAL

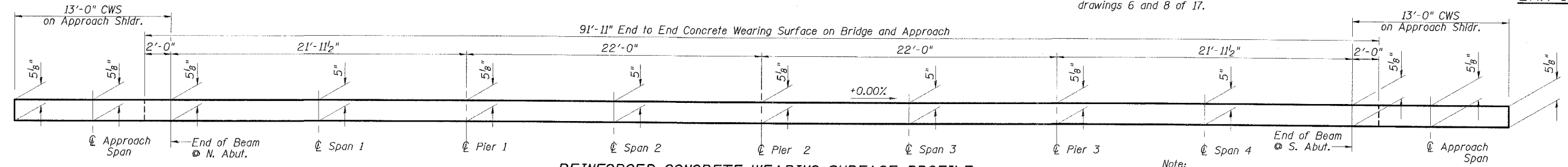
Bar	No.	Size	Length	Shape	
a(E)	92	#4	13'-0"	┌───┐	
a <sub>1</sub> (E)	92	#4	21'-10"	┌───┐	
a <sub>2</sub> (E)	44	#4	6'-5"	┌───┐	
b(E)	69	#4	31'-8"	───	
b <sub>1</sub> (E)	48	#4	29'-8"	───	
Reinforcement Bars, Epoxy Coated				Pound	4740
Concrete Wearing Surface, 5"				Sq. Yd.	383
Bridge Deck Grooving				Sq. Yd.	383
Bar Splicers				Each	92
Protective Coat				Sq. Yd.	383



PLAN - WEARING SURFACE

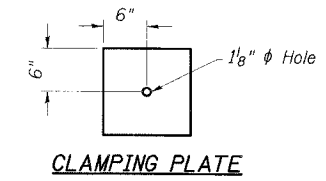
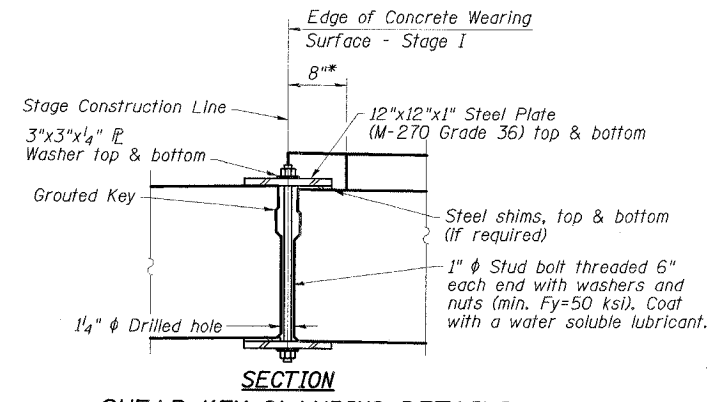
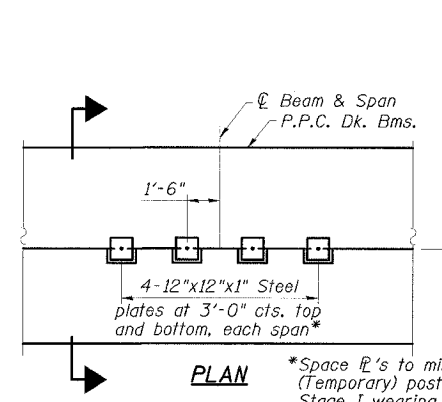
**MIN. BAR LAP**  
#4 bar = 1'-8"

Note:  
Reinforcement bars designated (E) shall be epoxy coated. Bars indicated thus 16x3-#4 etc. indicates 16 lines of bars with 3 lengths per line. For remainder of superstructure details, see drawings 6 and 8 of 17.



REINFORCED CONCRETE WEARING SURFACE PROFILE  
(At edge of bridge deck)

Note:  
Greater thickness is required at centerline of superstructure to conform to cross section slopes shown on Dwg. 6 of 17.



Notes:  
See Stage Construction Details for traffic lanes. Cost is included with Precast Prestressed Concrete Deck Beams.

**SUPERSTRUCTURE**  
**US 45 OVER SKILLET FORK OVERFLOW**  
**FAP ROUTE 328 - SECTION (105X)BR**  
**WHITE COUNTY**  
**STATION 598+76.00**  
**STRUCTURE NO. 097-0019**

**ESCA**  
CONSULTANTS, INC.

DESIGNED BY:	RDP	01/07
DRAWN BY:	DWH	01/07
CHECKED BY:	JMS/MTD	01/07
APPROVED BY:	RDP	04/07

\*Space ℓ's to miss Steel Railing (Temporary) posts; notch Stage I wearing surface around ℓ's and space reinf. to miss notches.