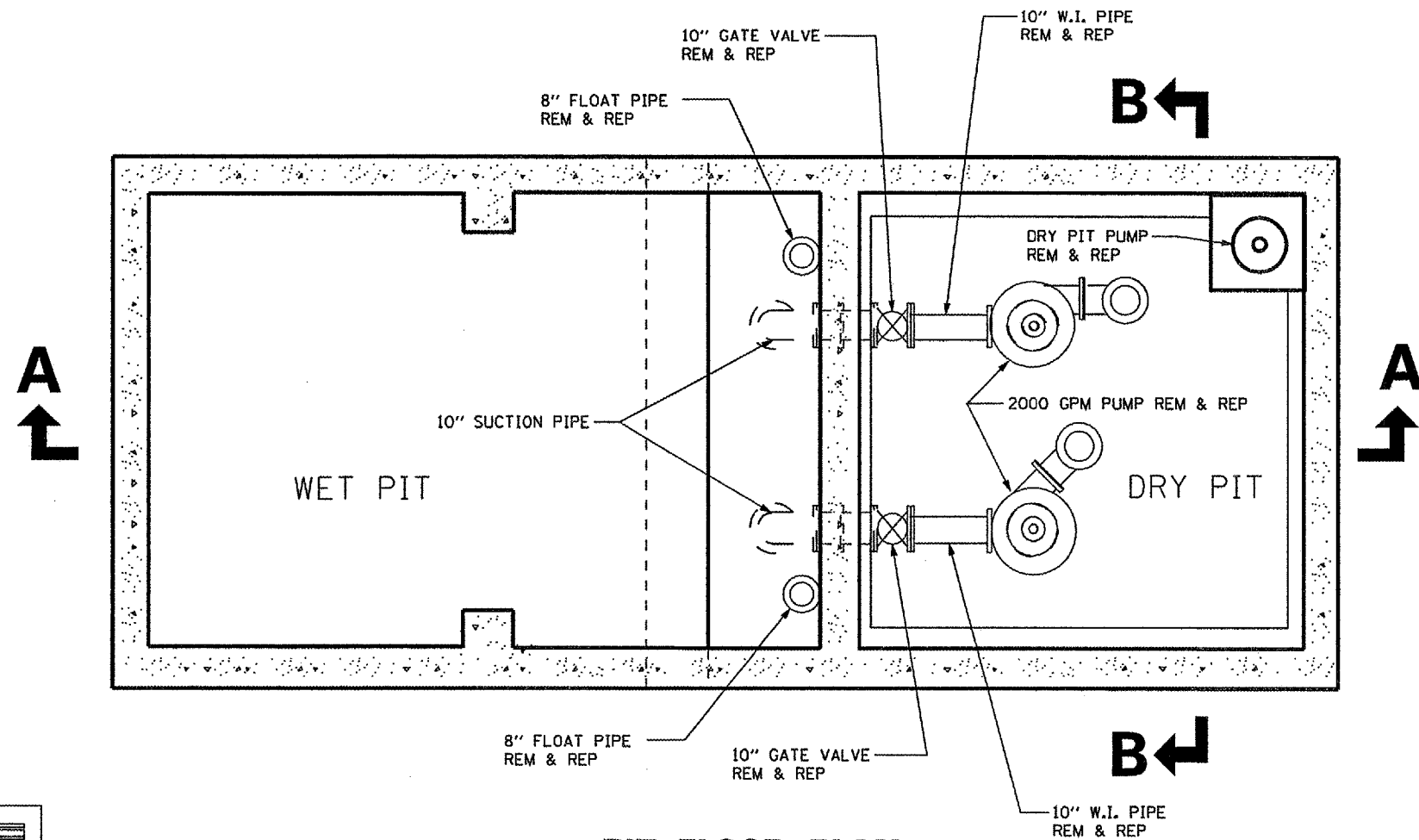
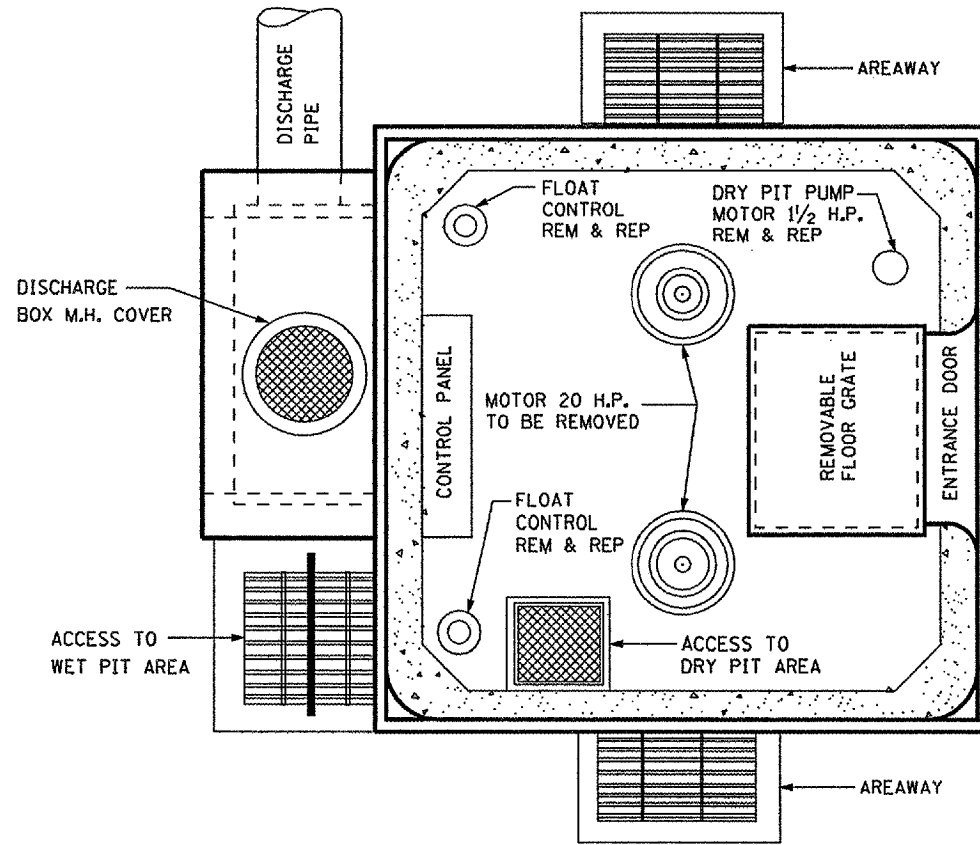


F.A.P. RYE.	SECTION	COUNTY	TOTAL SHEETS	SHEET NO.
332	(2SB-FAGH)I	IROQUOIS	15	5
FED. ROAD DIST. NO. _		ILLINOIS	STATE AID PROJECT	



PIT FLOOR PLAN



MOTOR ROOM FLOOR PLAN

DATE: JANUARY 7, 2007
 FILE: c:/projects/cmain08/cm309/details.dgn

REVISIONS	DATE

ILLINOIS DEPARTMENT OF TRANSPORTATION
EXISTING PUMP HOUSE
DETAILS
 FAP ROUTE 322 (IL 1) SECTION (2SB-FAGH)I
 IROQUOIS COUNTY
 MILFORD PUMP STATION
 S.N. 038-0024