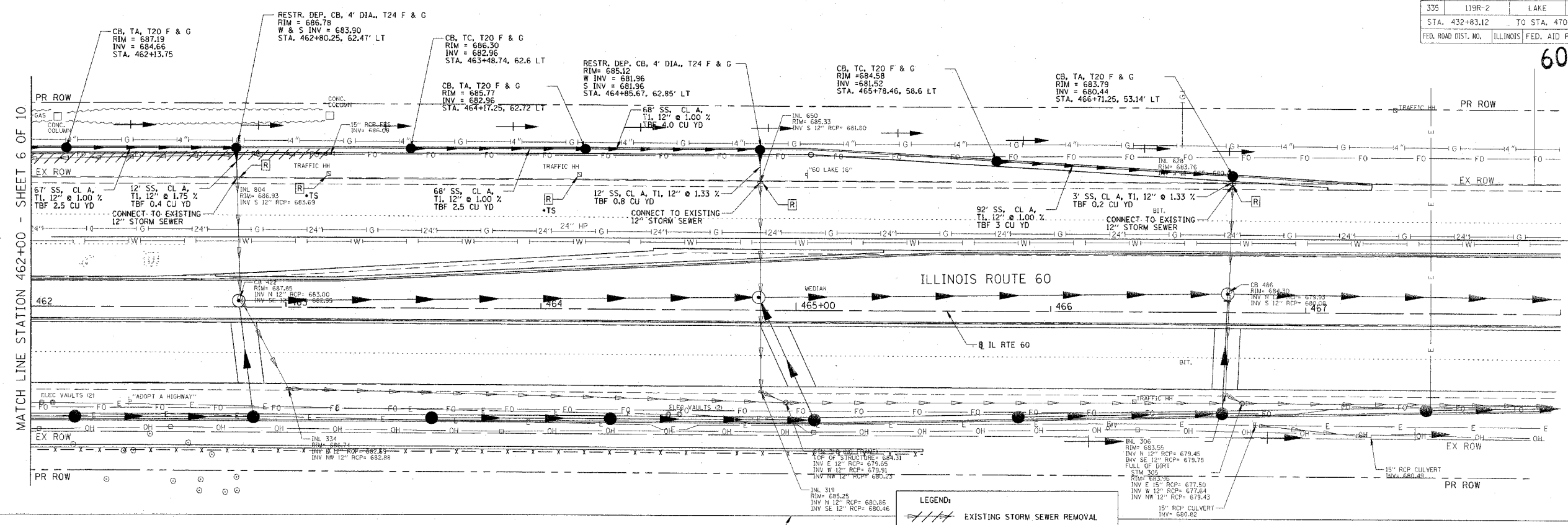
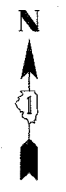
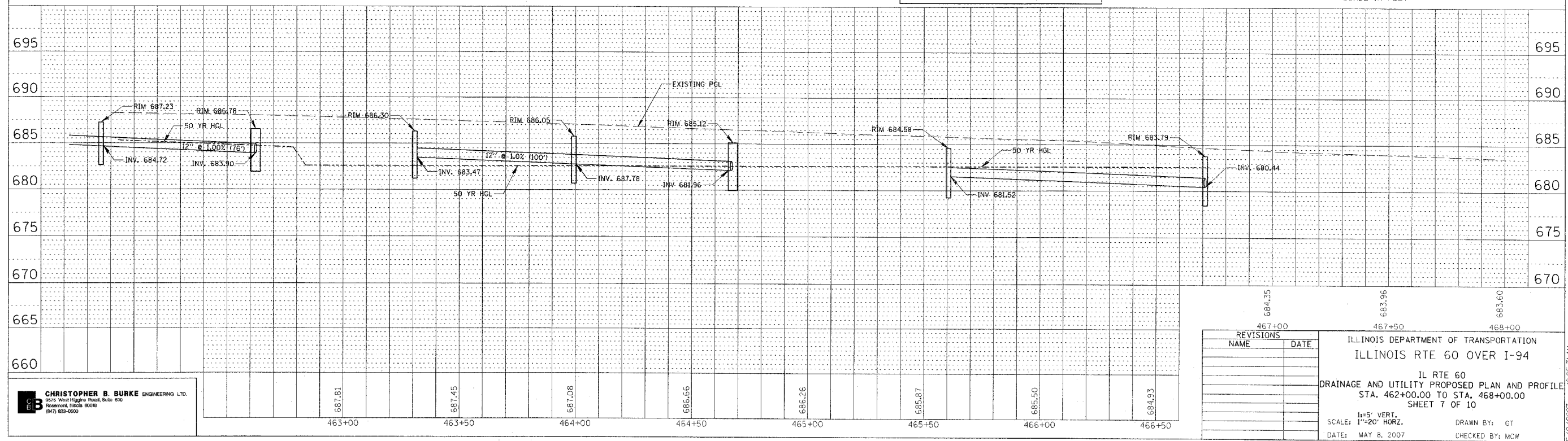


F.A.P. RTE.	SECTION	COUNTY	TOTAL SHEETS	SHEET NO.
335	119R-2	LAKE	439	148
STA. 432+83.12		TO STA. 470+56.84		
FED. ROAD DIST. NO. ILLINOIS FED. AID PROJECT				

60B01



SEE DRAINAGE AND UTILITY PROPOSED PLAN AND PROFILE SHEET 3 OF 10 FOR SOUTH SIDE OF IL ROUTE 60



REVISIONS	NAME	DATE

ILLINOIS DEPARTMENT OF TRANSPORTATION  
ILLINOIS RTE 60 OVER I-94  
IL RTE 60  
DRAINAGE AND UTILITY PROPOSED PLAN AND PROFILE  
STA. 462+00.00 TO STA. 468+00.00  
SHEET 7 OF 10

1"=5' VERT.  
1"=20' HORZ.  
DATE: MAY 8, 2007  
DRAWN BY: GT  
CHECKED BY: MCW

**CHRISTOPHER B. BURKE ENGINEERING LTD.**  
6075 West Magna Road, Suite 600  
Rollingwood, Illinois 60018  
(847) 823-0500

DATE	BY	REVISION

PLAN  
NOTE BOOK  
NO. OF PAGES CHECKED  
NO. OF PAGES DESIGNED  
NO. OF PAGES REVISIONS

DATE	BY	REVISION

PROFILE  
NOTE BOOK  
NO. OF PAGES CHECKED  
NO. OF PAGES DESIGNED  
NO. OF PAGES REVISIONS

5/27/2007 10:05:31 AM