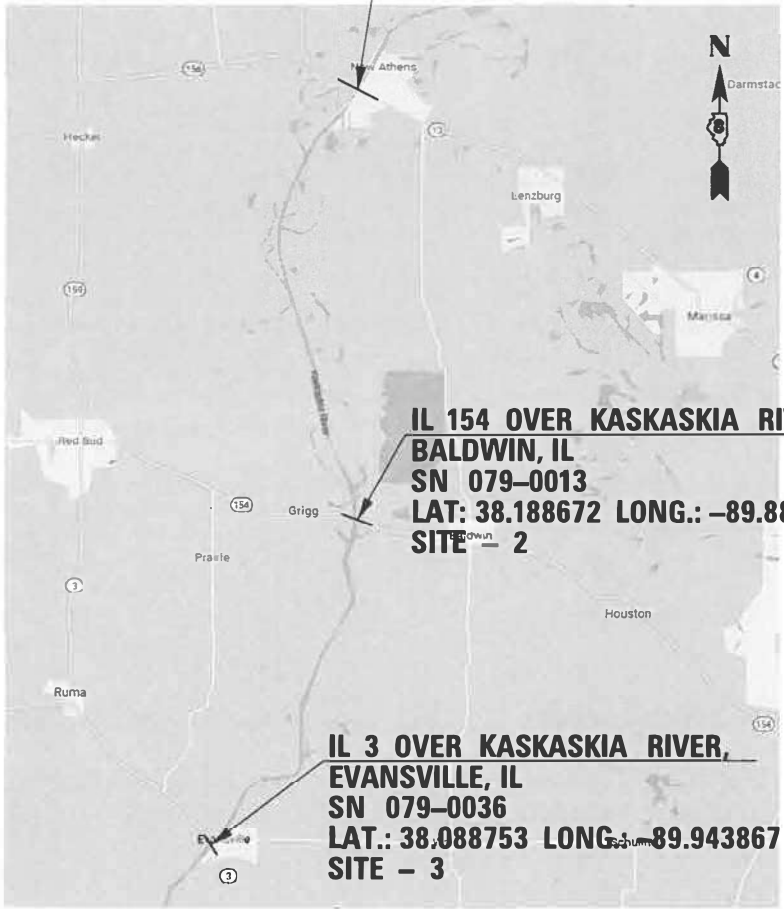


STATE OF ILLINOIS
DEPARTMENT OF TRANSPORTATION

PROPOSED
HIGHWAY PLANS
FAP ROUTE VARIOUS
SECTION DIST 8 LIGHTING 2023-1
PROJECT NHPP-STP-DQ76(668)
BRIDGE NAVIGATION LIGHTING
ST. CLAIR AND RANDOLPH COUNTIES

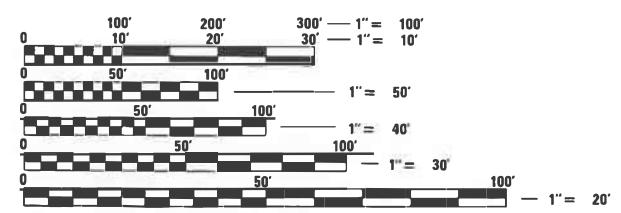
C-98-044-23

IL 13 OVER KASKASKIA RIVER,
NEW ATHENS, IL
SN 082-0198LO
LAT.: 38.319564 LONG.: -89.887842
SITE - 1



IL 154 OVER KASKASKIA RIVER,
BALDWIN, IL
SN 079-0013
LAT: 38.188672 LONG.: -89.888918
SITE - 2

IL 3 OVER KASKASKIA RIVER,
EVANSVILLE, IL
SN 079-0036
LAT.: 38.088753 LONG.: -89.943867
SITE - 3



FULL SIZE PLANS HAVE BEEN PREPARED USING STANDARD
ENGINEERING SCALES. REDUCED SIZED PLANS WILL NOT
CONFORM TO STANDARD SCALES. IN MAKING MEASUREMENTS
ON REDUCED PLANS, THE ABOVE SCALES MAY BE USED.

J.U.L.I.E.
JOINT UTILITY LOCATION INFORMATION FOR EXCAVATION
1-800-892-0123
OR 811

PROJECT ENGINEER: CHERYL KEPLAR
PROJECT MANAGER: RICHARD BARBEE

CONTRACT NO. 76R85

F.A. RTE.	SECTION	COUNTY	TOTAL SHEETS	SHEET NO.
•	DIST. 8 LIGHTING 2023-1	**	13	1
		ILLINOIS	CONTRACT NO. 76R85	

*VARIOUS
**ST. CLAIR AND RANDOLPH COUNTIES
D-98-006-23



LICENSE EXPIRES: 11-30-2025



STATE OF ILLINOIS
DEPARTMENT OF TRANSPORTATION

SUBMITTED May 9, 2024
Kil REGIONAL ENGINEER

June 28, 2024 SEA. EKS
ENGINEER OF DESIGN AND ENVIRONMENT

June 28, 2024 Stephen M. Smith
DIRECTOR OF HIGHWAYS PROJECT IMPLEMENTATION

PRINTED BY THE AUTHORITY
OF THE STATE OF ILLINOIS

SHEET INDEX:

1	COVER SHEET
2	SHEET INDEX, HIGHWAY STANDARDS, AND GENERAL NOTES & LEGEND
3	SUMMARY OF QUANTITIES
4 TO 6	NEW ATHENS (EXISTING, PROPOSED PLAN VIEWS & MISC. DETAILS)
7 TO 9	BALDWIN (EXISTING, PROPOSED PLAN VIEWS & MISC. DETAILS)
10 TO 12	EVANSVILLE (EXISTING, PROPOSED PLAN VIEWS & MISC. DETAILS)
13	NAVIGATIONAL LIGHTING MOUNTING DETAILS

IDOT HIGHWAY STANDARDS

001006	DECIMAL OF AN INCH AND OF A FOOT
000001-08	STANDARD SYMBOLS, ABBREVIATIONS AND PATTERNS
701001-02	OFF-RD OPERATIONS, 2L, 2W, MORE THAN 15' AWAY
701006-05	OFF-RD OPERATIONS, 2L, 2W, 15' TO 24" FROM PAVEMENT EDGE
701201-05	LANE CLOSURE, 2L, 2W, DAY ONLY, FOR SPEED >= 45 MPH
701301-04	LANE CLOSURE, 2L, 2W, SHORT TIME OPERATIONS
701901-09	TRAFFIC CONTROL DEVICES
812001-01	RACEWAYS EMBEDDED IN STRUCTURE
826001-03	OBSTRUCTION WARNING LIGHTING CONTROLLER, 240V

ABBREVIATIONS

E	EXISTING TO REMAIN
EMC	ELECTRICAL MAINTENANCE CONTRACT
FT	FEET OR FOOT
JB	JUNCTION BOX
NO.	NUMBER
N.T.S.	NOT TO SCALE
PR	PROPOSED
PVC	POLYVINYL CHLORIDE
RGS	RIGID GALVANISED STEEL
R	REMOVE
U.N.O.	UNLESS NOTED OTHERWISE

LEGEND

----- OR -----	CONDUIT ATTACHED TO STRUCTURE, 1 1/2" DIA., GALVANIZED STEEL
-----	UNIT DUCT, 600V, 2-1/C NO.4, 1/C NO.6 GROUND, (XLP-TYPE USE), 1 1/4" DIA., POLYETHYLENE
⦿	WATERWAY OBSTRUCTION WARNING LUMINAIRE, LED CENTER CHANNEL, GREEN, 360°.
⦿	WATERWAY OBSTRUCTION WARNING LUMINAIRE, LED CHANNEL MARGIN, RED 180°
●	WOOD POLE, 40 FT., CLASS 4
Ⓜ	UTILITY METER

GENERAL NOTES:

- ALL SPLICING MUST BE IN POLE BASES WITH WATERPROOF SEALANT AND HEAT SHRINKABLE PLASTIC CAPS, UNLESS NOTED OTHERWISE.
- EXISTING NAVIGATIONAL SYSTEM SHALL REMAIN OPERATIONAL UNTIL THE PROPOSED LIGHTS AND COMPLETE NAVIGATION LIGHTING SYSTEM ARE INSTALLED AND OPERATIONAL.
- SWITCHOVER OF CABLE CONNECTIONS TO PROPOSED SYSTEM FROM EXISTING POLES SHALL TAKE PLACE DURING DAY TIME.
- LOCATIONS SELECTED FOR COLLECTION OF DEBRIS AND/OR STORAGE OF EQUIPMENT SHALL BE AS APPROVED BY THE ENGINEER.

UTILITY NOTES:

- THE CONTRACTOR SHALL BE RESPONSIBLE FOR THE PROTECTION OF ALL UNDERGROUND OR SURFACE UTILITIES EVEN THOUGH THEY MAY NOT BE SHOWN IN THE PLANS. ANY UTILITY THAT IS DAMAGED DURING CONSTRUCTION SHALL BE REPAIRED OR REPLACED TO THE SATISFACTION OF THE ENGINEER. THIS WORK SHALL BE AT THE CONTRACTORS EXPENSE.
- THE FOLLOWING UTILITIES ARE KNOWN TO HAVE FACILITIES WITHIN THE PROJECT AREA AS FOLLOWS;

Utility Information for Contract No. 76R85

Location	Company	Address	Type	Member	JULIE	Aerial	Buried
1	Site 1-IL 13 over Kaskaskia River, New Athens						
	Ameren Illinois	1800 W Main Street, Marion, IL 62959	Gas & Electric	Yes		X	X
	AT&T Illinois	1420 Frontage Rd, O'Fallon, IL 62269	Communications	Yes		X	X
	Clearwave Communications	Two North Vine St, 2nd Floor, PO Box 808, Harrisburg, IL 62946	Communications	Yes		X	X
	Village of New Athens	905 Spotsylvania St, New Athens, IL 62264	Sewer & Water	Yes			X
2	Site 2-IL 154 over Kaskaskia River, Baldwin						
	Ameren Illinois	1010 N Market, PO Box 218, Sparta, IL 62286-0218	Electric	Yes		X	X
	Village of Baldwin	212 West Elm St, PO Box 5, Baldwin, IL 62217-0005	Sewer & Water	Yes			X
	Clearwave Communications	Two North Vine St, 2nd Floor, PO Box 808, Harrisburg, IL 62946	Communications	Yes		X	X
	Egyptian Electric Co-op	1005 West Broadway, PO Box 38, Steeleville, IL 62288-0038	Electric	Yes		X	X
	City of Red Bud	200 E Market St, Red Bud, IL 62278-1597	Gas, Water, Sewer	Yes			X
	Egyptian Telephone Co-op	1010 West Broadway, PO Box 158, Steeleville, IL 62288-0158	Communications	Yes		X	X
	City of Red Bud	200 E Market St, Red Bud, IL 62278-1597	Electric	Yes		X	X
	City of Sparta	114 West Jackson Street, Sparta, IL 62286	Sewer & Water	Yes			X
	Mediacom	1603 E DeYoung St, Marion, IL 62959	Cable TV	Yes		X	X
3	Site 3-IL 3 over Kaskaskia River, Evansville, IL						
	Ameren Illinois	1800 W Main Street, Marion, IL 62959	Gas & Electric	Yes		X	X
	Village of Evansville	403 Spring Street, PO Box 257, Evansville, IL 62242	Sewer & Water	Yes			X

REV. - MS

LT-01

MODEL: SH001NAME\$
FILE NAME: \$FILES

	USER NAME = \$USERS	DESIGNED - AM/HM	REVISED -	STATE OF ILLINOIS DEPARTMENT OF TRANSPORTATION	SHEET INDEX, HIGHWAY STANDARD, GENERAL NOTES AND LEGEND				F.A. RTE.	SECTION	COUNTY	TOTAL SHEETS	SHEET NO.
		DRAWN - AM	REVISED -						VARIOUS	DIST. 8 LIGHTING 2023-1	St. Clair and Randolph Counties	13	2
	PLOT SCALE = \$SCALE\$	CHECKED - KK/HM	REVISED -						CONTRACT NO. 76R85				
	PLOT DATE = \$DATES	DATE - 03/15/2024	REVISED -						ILLINOIS FED. AID PROJECT				
SCALE: NONE		SHEET 1 OF 1 SHEETS		STA.		TO STA.							

CODE NO.	DESCRIPTION	UNIT	TOTAL QUANTITY	CONSTRUCTION CODE		
				NHPP SAFETY 0021	NHPP SAFETY 0021	NHPP SAFETY 0021
				S.N. 082-0198	S.N. 079-0013	S.N. 079-0036
67100100	MOBILIZATION	L SUM	1	0.33	0.33	0.34
81100300	CONDUIT ATTACHED TO STRUCTURE, 1" DIA., GALVANIZED STEEL	FOOT	180	60	60	60
81100500	CONDUIT ATTACHED TO STRUCTURE, 1 1/2" DIA., GALVANIZED STEEL	FOOT	2,230	510	840	880
81300320	JUNCTION BOX, STAINLESS STEEL, ATTACHED TO STRUCTURE, 8" X 8" X 6"	EACH	18	6	6	6
81300530	JUNCTION BOX, STAINLESS STEEL, ATTACHED TO STRUCTURE, 12" X 10" X 6"	EACH	4	1	1	2
81603090	UNIT DUCT, 600V, 3-1C NO.4, 1/C NO.6 GROUND, (XLP-TYPE USE), 1 1/4" DIA. POLYETHYLENE	FOOT	200	200		
81702110	ELECTRIC CABLE IN CONDUIT, 600V (XLP-TYPE USE) 1/C NO. 10	FOOT	900	300	300	300
81702120	ELECTRIC CABLE IN CONDUIT, 600V (XLP-TYPE USE) 1/C NO. 8	FOOT	6,690	1,550	2,500	2,640
81800300	AERIAL CABLE, 3-1/C NO. 2 WITH MESSANGER WIRE	FOOT	100		100	
82200605	WATERWAY OBSTRUCTION WARNING LUMINAIRE, LED	EACH	18	6	6	6
82600106	OBSTRUCTION WARNING LIGHTING CONTROLLER	EACH	3	1	1	1
84301201	REMOVAL OF OBSTRUCTION WARNING LIGHTING SYSTEM	L SUM	1	0.33	0.33	0.34
89502300	REMOVE ELECTRIC CABLE FROM CONDUIT	FOOT	3,000	1,000	1,000	1,000
X8302140	WOOD POLE, 40 FT, CLASS 4	EACH	2	1	1	
X7010101	TRAFFIC CONTROL AND PROTECTION, STANDARD 701201 (SPECIAL)	EACH	3	1	1	1

80% FED
20% STATE

REV. - MS

MODEL: \$MODELNAME\$
FILE NAME: \$FILE\$



USER NAME = \$USERS	DESIGNED - AM/HM	REVISED -
	DRAWN - AM	REVISED -
PLOT SCALE = \$\$SCALE\$	CHECKED - KK/HM	REVISED -
PLOT DATE = \$DATE\$	DATE - 03/15/2024	REVISED -

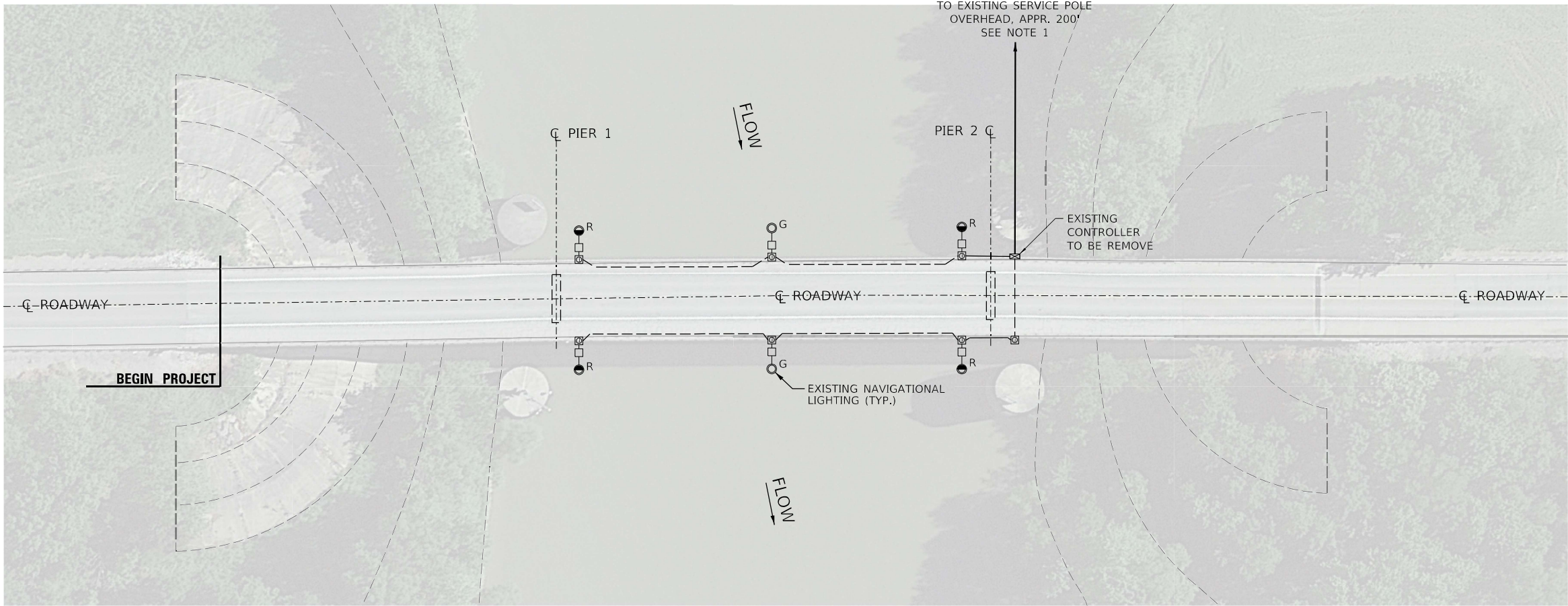
STATE OF ILLINOIS
DEPARTMENT OF TRANSPORTATION

SUMMARY OF QUANTITIES

SCALE: SHEET OF SHEETS STA. TO STA.

F.A. RTE.	SECTION	COUNTY	TOTAL SHEETS	SHEET NO.
VARIOUS	DIST 8 LIGHTING 2023-1	St. Clair and Randolph Counties	13	3
CONTRACT NO. 76R85				
ILLINOIS			FED. AID PROJECT	

LT-02



REMOVAL PLAN VIEW



NOTES:

1. CONTRACTOR TO LOCATE EXISTING SERVICE POLE. COORDINATE WITH UTILITY COMPANY AND IDOT. DISCONNECT AND REMOVE EXISTING METER AND DISCONNECT SWITCH.

MODEL: Default
FILE NAME: G:\1211025C_W03_Navigational Lighting\03A_Design\01_CADD\02_Sheet\76R85_Kaskaskia_River\0876R85-st-light_LT-03 - New Athens.dgn



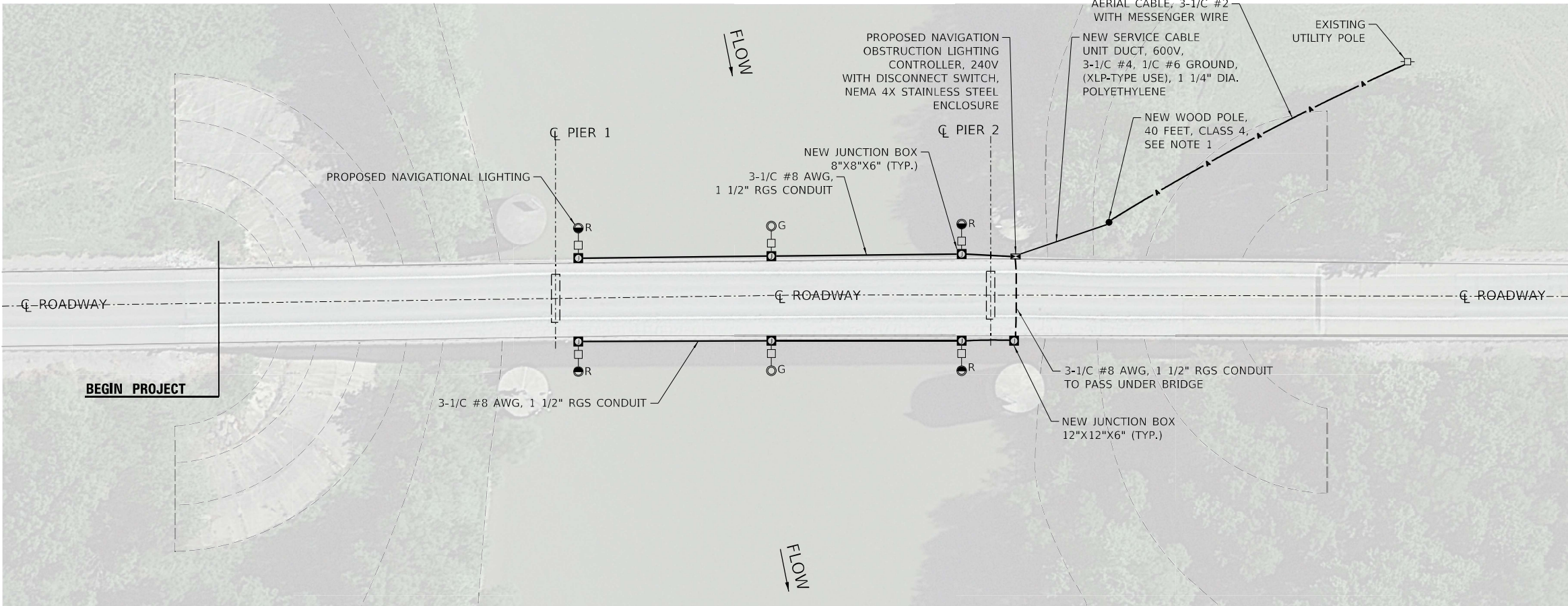
USER NAME = amassey	DESIGNED - AM/HM	REVISED -
	DRAWN - AM	REVISED -
PLOT SCALE = 100,0000 ' / in.	CHECKED - KK/HM	REVISED -
PLOT DATE = 3/15/2024	DATE - 03/15/2024	REVISED -

STATE OF ILLINOIS
DEPARTMENT OF TRANSPORTATION

IL 13 OVER KASKASKIA RIVER, NEW ATHENS, IL
SN 082-0198

SCALE: SHEET OF SHEETS STA. TO STA.

F.A. RTE.	SECTION	COUNTY	TOTAL SHEETS	SHEET NO.
VARIOUS	DIST. 8 LIGHTING 2023-1	St. Clair and Randolph Counties	13	4
CONTRACT NO. 76R85				
ILLINOIS			FED. AID PROJECT	



PROPOSED PLAN VIEW

NOTES:

1. CONTRACTOR TO INSTALL 40' WOOD POLE AS SHOWN PER IDOT STANDARD. INSTALL METER AND DISCONNECT SWITCH ON THIS POLE. COORDINATE WITH LOCAL UTILITY COMPANY FOR NEW SERVICE AT THIS LOCATION.
2. CONTRACTOR TO RUN UNITDUCT FROM PROPOSED WOOD POLE TO PROPOSED NEW CONTROLLER AS SHOWN ON PLAN.
3. FOR NAVIGATIONAL LIGHT MOUNTING DETAIL, SEE DWG. LT-12.



USER NAME	= amassey
PLOT SCALE	= 100,0000 ' / in.
PLOT DATE	= 3/15/2024

DESIGNED	- AM/HM
DRAWN	- AM
CHECKED	- KK/HM
DATE	- 03/15/2024

REVISED	-
REVISED	-
REVISED	-
REVISED	-

**STATE OF ILLINOIS
DEPARTMENT OF TRANSPORTATION**

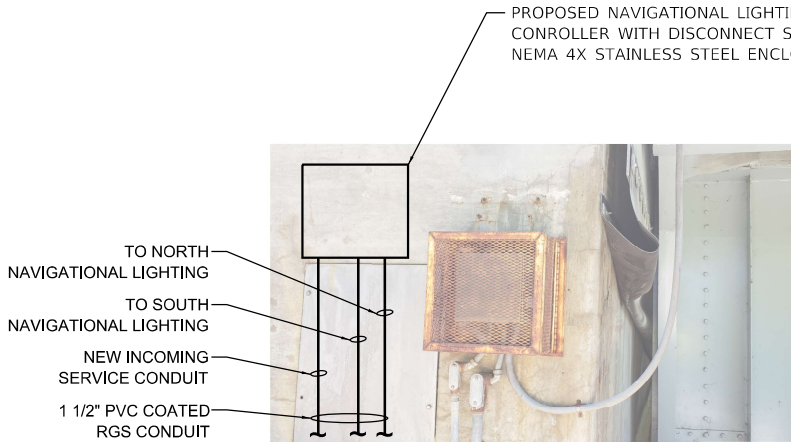
**IL 13 OVER KASKASKIA RIVER, NEW ATHENS, IL
SN 082-0198**

SCALE: SHEET OF SHEETS STA. TO STA.

F.A. RTE.	SECTION	COUNTY	TOTAL SHEETS	SHEET NO.
VARIOUS	DIST. 8 LIGHTING 2023-1	St. Clair and Randolph Counties	13	5
CONTRACT NO. 76R85				
ILLINOIS FED. AID PROJECT				

LT-04

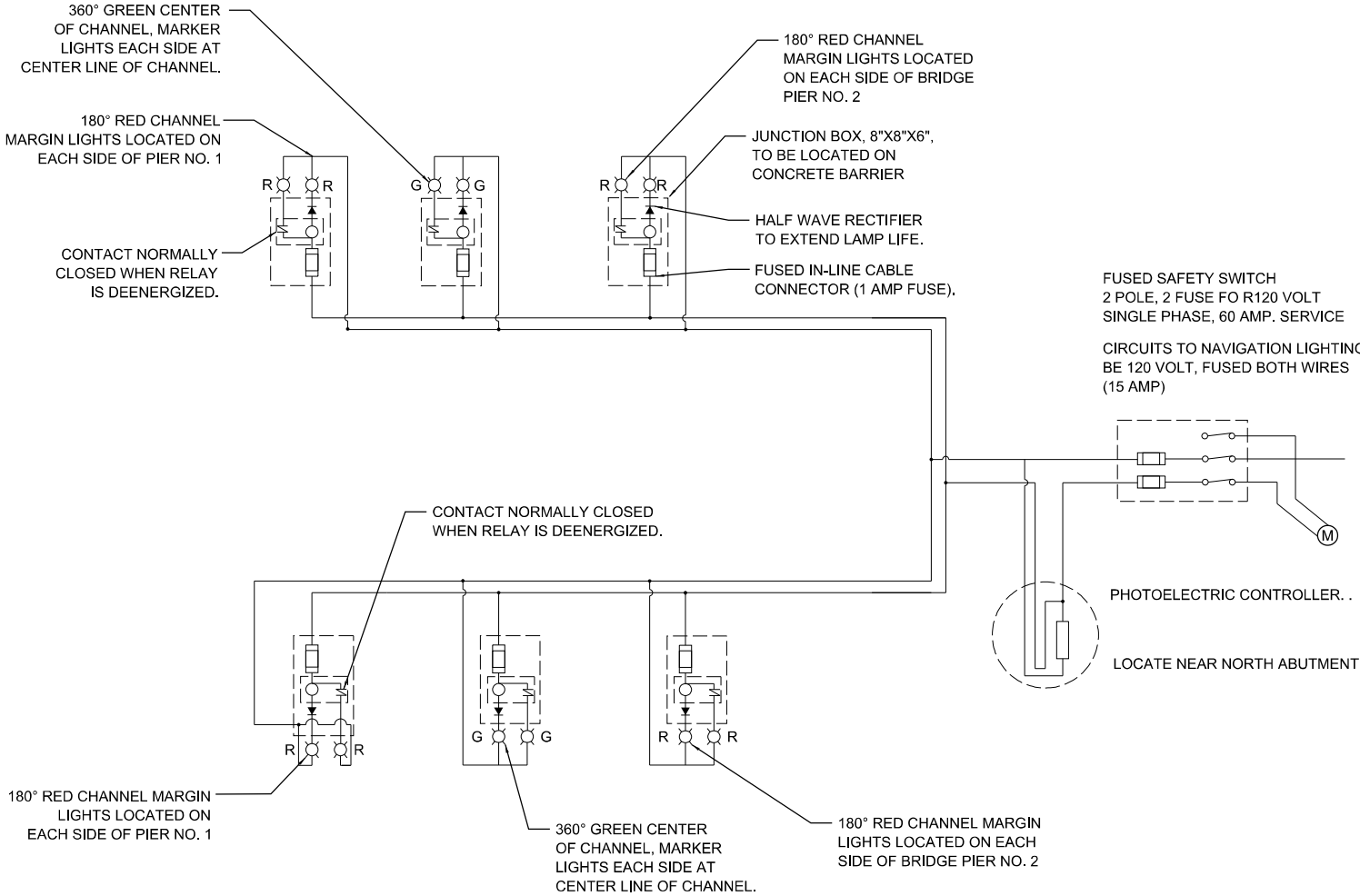
MODEL: Default
FILE NAME: G:\1211025C_W03_Navigational Lighting\03A_Design\01_CADD\02_Sheet\76R85_Kaskaskia_River\0876R85-stt-light_LT-04 - New Athens.dgn



**NEW CONTROLLER
LOCATION ON WALL**
N.T.S

NOTES

- 1. THE CONTRACTOR SHALL KEEP DEVIATIONS FROM THE CONDUIT ROUTING SHOWN ON THE PLANS TO MINIMUM. MAJOR DEVIATIONS SHALL BE REPORTED TO AND APPROVED BY THE ENGINEER.
- 2. CONTRACTOR SHALL USE EXPANSION/DEFLECTION FITTING AT THE EXPANSION JOINTS, 1.5" DIA, AT EACH BRIDGE JOINT, FOR NAVIGATION WIRING. SEE HIGHWAY STANDARD 812001-01.



CHANNEL WIRING DIAGRAM
N.T.S

MODEL: Default
FILE NAME: G:\1211025C_W03_Navigational Lighting\03A_Design\01_CADD\02_Sheet\76R85_Kaskaskia_River\0876R85-nt-light_LT-05 - New Athens.dgn



USER NAME = amassey	DESIGNED - AM/HM	REVISED -
	DRAWN - AM	REVISED -
PLOT SCALE = 100,0000 ' / in.	CHECKED - KK/HM	REVISED -
PLOT DATE = 3/15/2024	DATE - 03/15/2024	REVISED -

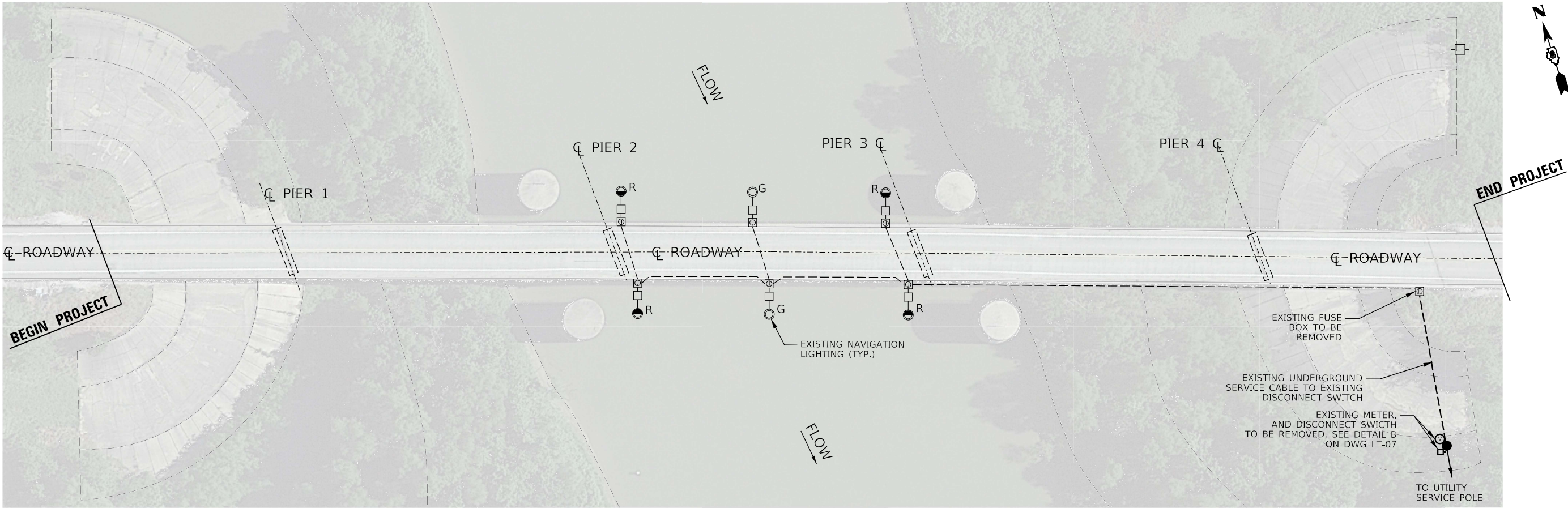
STATE OF ILLINOIS
DEPARTMENT OF TRANSPORTATION

IL 13 OVER KASKASKIA RIVER, NEW ATHENS, IL
MISC. DETAILS

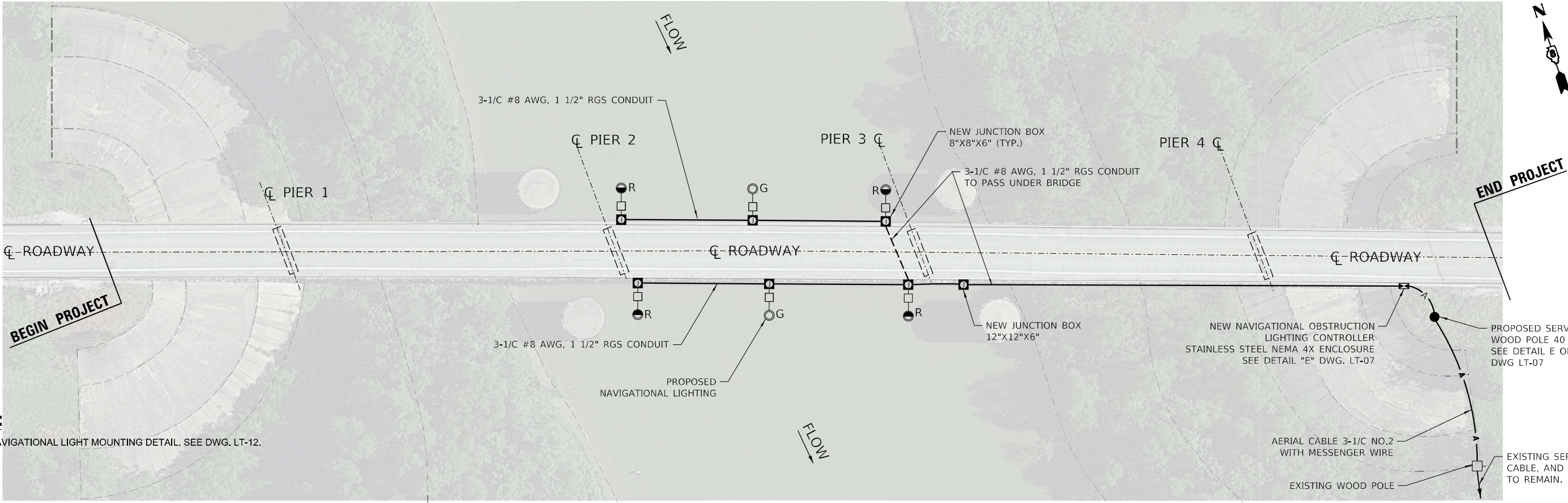
SCALE: SHEET OF SHEETS STA. TO STA.

F.A. RTE.	SECTION	COUNTY	TOTAL SHEETS	SHEET NO.
VARIOUS	DIST. 8 LIGHTING 2023-1	St. Clair and Randolph Counties	13	6
CONTRACT NO. 76R85				
ILLINOIS FED. AID PROJECT				

LT-05



REMOVAL PLAN VIEW



PROPOSED PLAN VIEW

NOTES:

1. FOR NAVIGATIONAL LIGHT MOUNTING DETAIL, SEE DWG. LT-12.



USER NAME	= amassey	DESIGNED	- AM/HM
DRAWN	- AM	REVISIONS	
PLOT SCALE	= 100,0000 ' / in.	CHECKED	- KK/HM
PLOT DATE	= 3/15/2024	DATE	- 03/15/2024

REVISIONS	
REVISIONS	
REVISIONS	
REVISIONS	

STATE OF ILLINOIS
DEPARTMENT OF TRANSPORTATION

IL 154 OVER KASKASKIA RIVER, BALDWIN, IL
SN 079-0013

SCALE: SHEET OF SHEETS STA. TO STA.

F.A. RTE.	SECTION	COUNTY	TOTAL SHEETS	SHEET NO.
VARIOUS	DIST. 8 LIGHTING 2023-1	St. Clair and Randolph Counties	13	7
CONTRACT NO. 76R85				
ILLINOIS FED. AID PROJECT				

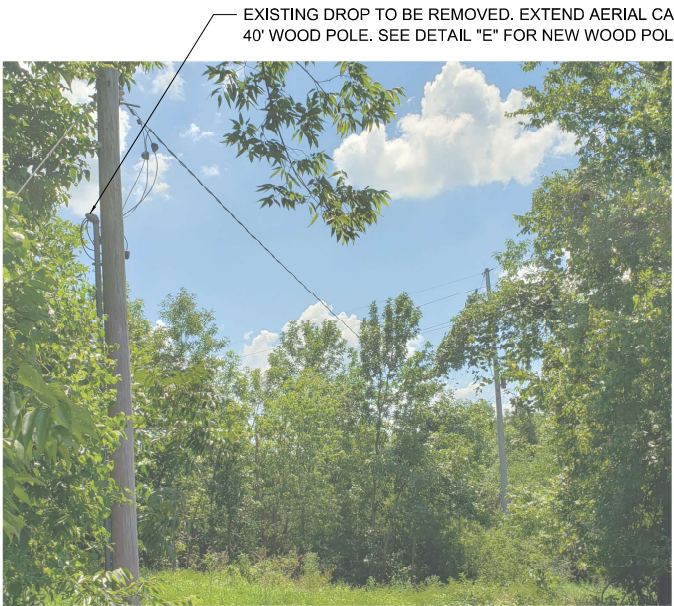
LT-06



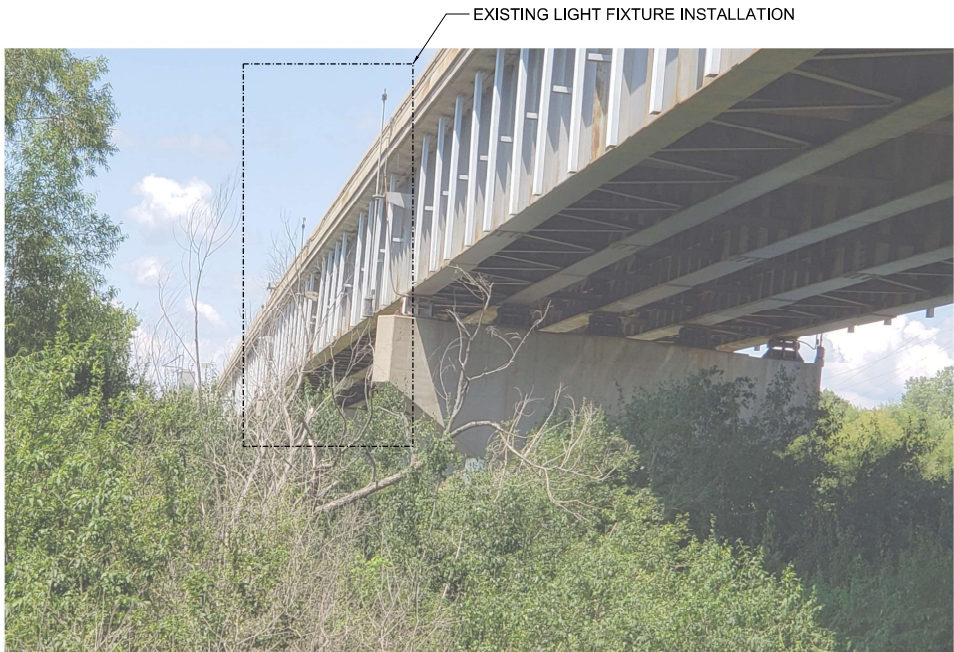
DETAIL - "A"
N.T.S



DETAIL - "B"
N.T.S



DETAIL - "C"
N.T.S



DETAIL - "D"
N.T.S

NEW NAVIGATION OBSTRUCTION LIGHTING
CONTROLLER WITH PHOTOCELL AND DISCONNECT
SWITCH. NEMA 4X STAINLESS STEEL ENCLOSURE



DETAIL - "E"
N.T.S

MODEL: S:\MODEL\NAMES
FILE NAME: STILES



USER NAME = \$USERS	DESIGNED - AM/HM	REVISED -
PLOT SCALE = \$SCALES	DRAWN - AM	REVISED -
PLOT DATE = \$DATES	CHECKED - KK/HM	REVISED -
	DATE - 03/15/2024	REVISED -

STATE OF ILLINOIS
DEPARTMENT OF TRANSPORTATION

IL 154 OVER KASKASKIA RIVER, BALDWIN, IL
MISC. DETAILS

SCALE: SHEET OF SHEETS STA. TO STA.

F.A. RTE.	SECTION	COUNTY	TOTAL SHEETS	SHEET NO.
VARIOUS	DIST. 8 LIGHTING 2023-1	St. Clair and Randolph Counties	13	8
CONTRACT NO. 76R85				
ILLINOIS FED. AID PROJECT				

MODEL: Default
FILE NAME: G:\1211025C_W03_Navigational Lighting\03A_Design\01_CADD\02_Sheet\76R85-ht-light_LT-08 - Baldwin.dgn



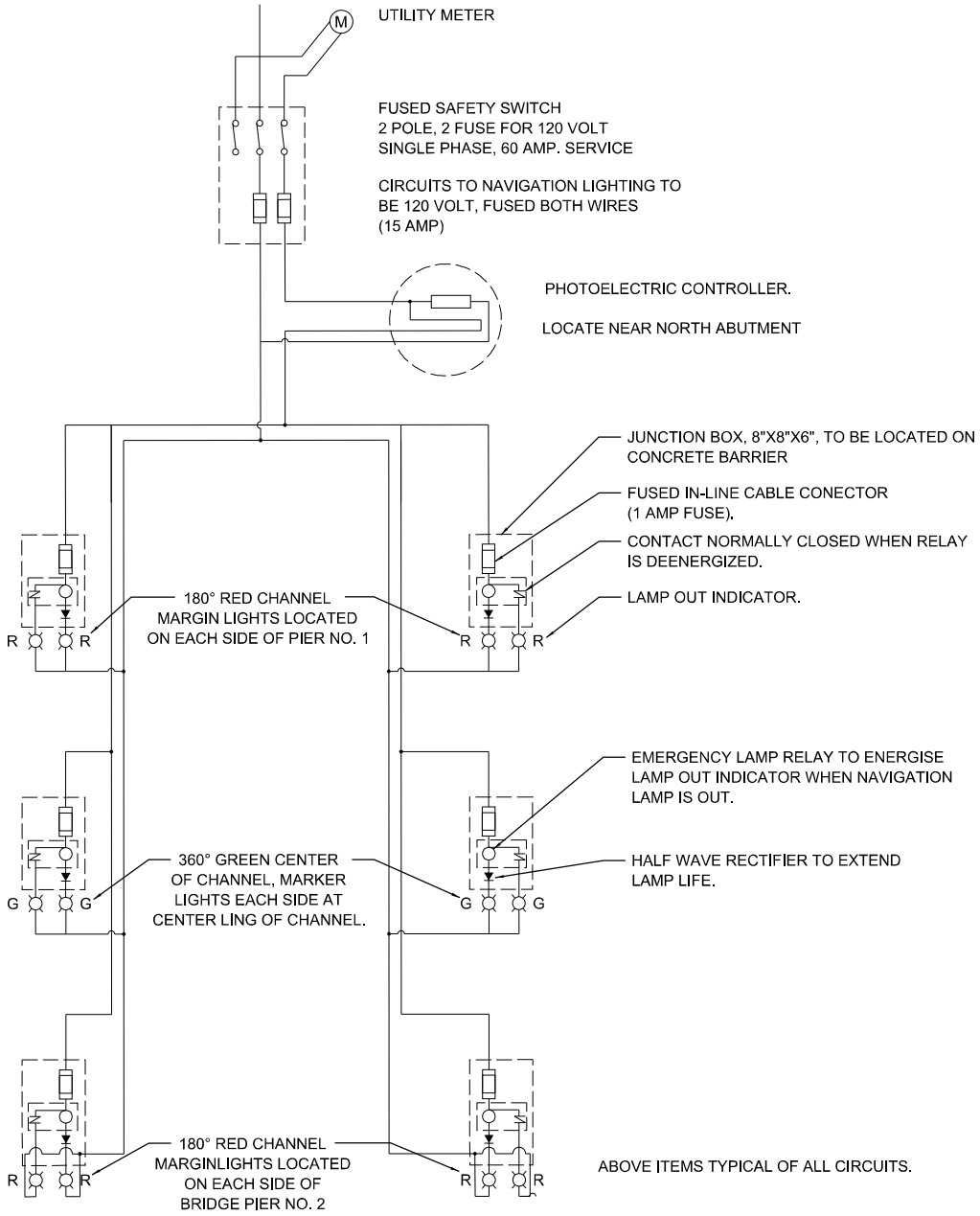
USER NAME = amassey	DESIGNED - AM/HM	REVISED -
	DRAWN - AM	REVISED -
PLOT SCALE = 100,0000 ' / in.	CHECKED - KK/HM	REVISED -
PLOT DATE = 3/15/2024	DATE - 03/15/2024	REVISED -

STATE OF ILLINOIS
DEPARTMENT OF TRANSPORTATION

IL 154 OVER KASKASKIA RIVER, BALDWIN, IL
MISC. DETAILS

SCALE: SHEET OF SHEETS STA. TO STA.

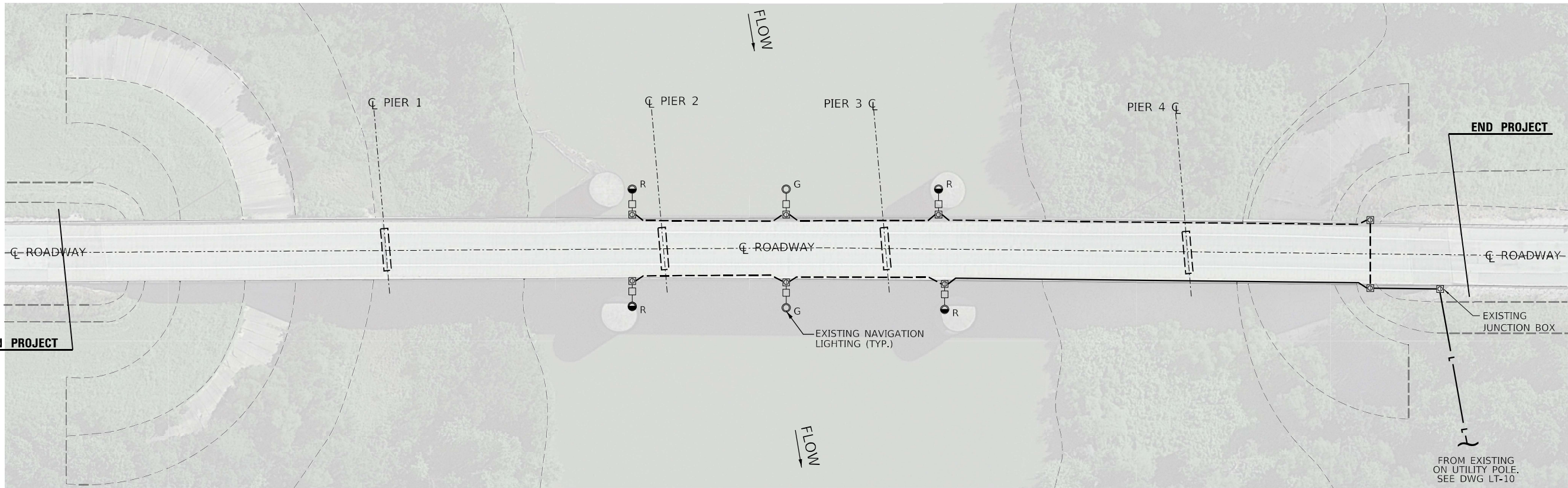
F.A. RTE.	SECTION	COUNTY	TOTAL SHEETS	SHEET NO.
VARIOUS	DIST. 8 LIGHTING 2023-1	St. Clair and Randolph Counties	13	9
CONTRACT NO. 76R85				
ILLINOIS			FED. AID PROJECT	



CHANNEL WIRING DIAGRAM

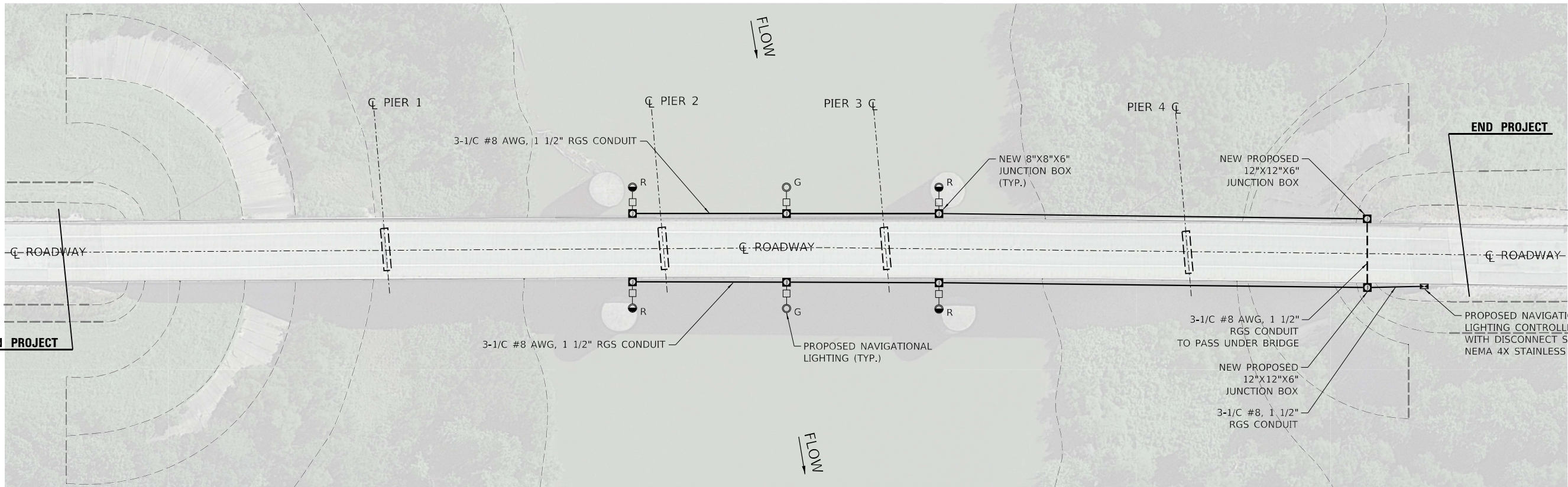
N.T.S

BEGIN PROJECT



REMOVAL PLAN VIEW

BEGIN PROJECT



PROPOSED PLAN VIEW

NOTES:

1. FOR NAVIGATIONAL LIGHT MOUNTING DETAIL, SEE DWG. LT-12.



USER NAME	= amassey	DESIGNED	- AM/HM
DRAWN	- AM	REVISED	-
PLOT SCALE	= 100,0000 ' / in.	CHECKED	- KK/HM
PLOT DATE	= 3/15/2024	DATE	- 03/15/2024

REVISED	-
REVISED	-
REVISED	-
REVISED	-

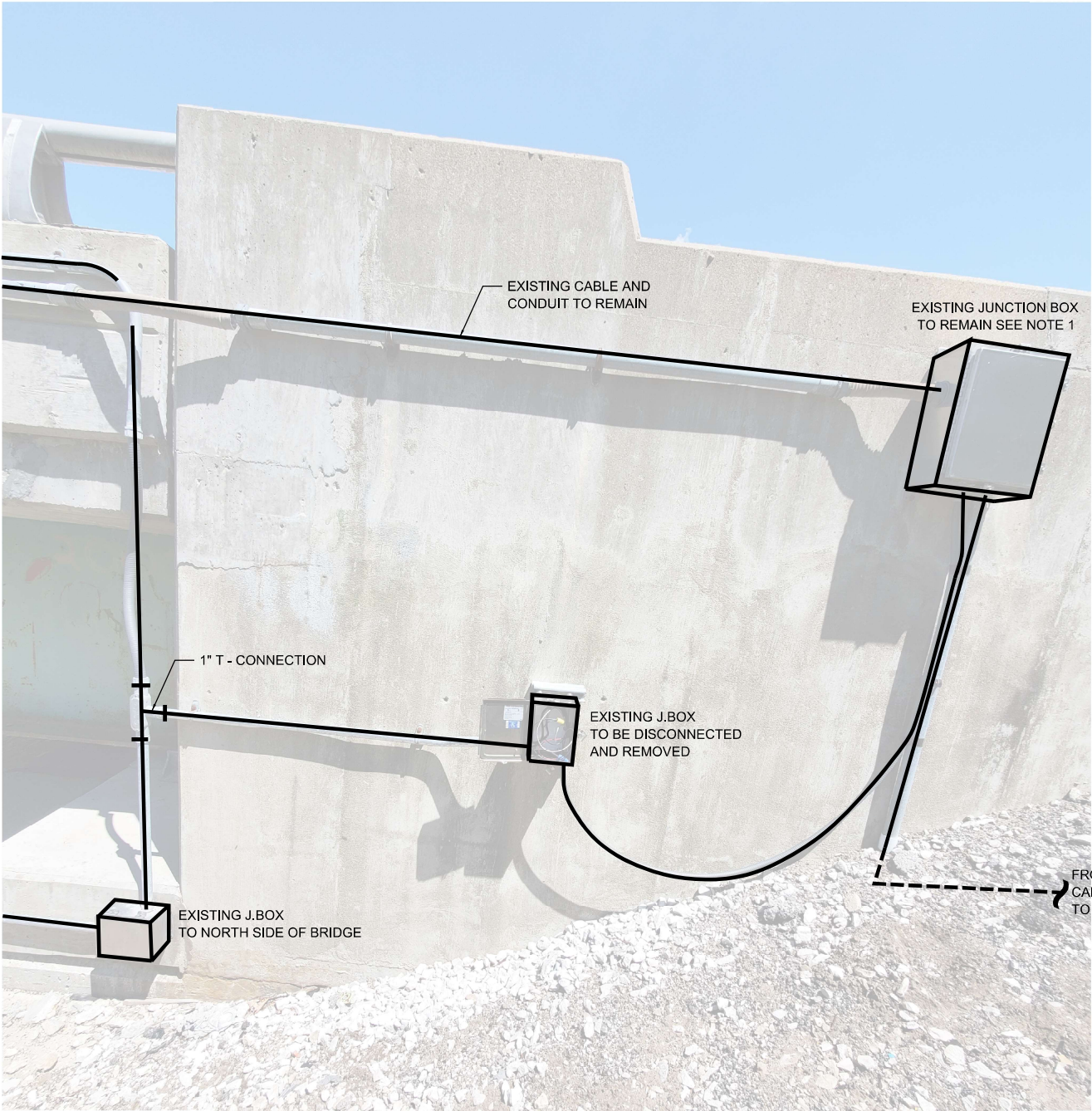
STATE OF ILLINOIS
DEPARTMENT OF TRANSPORTATION

IL 3 OVER KASKASKIA RIVER, EVANSVILLE, IL
SN 079-0036

SCALE: SHEET OF SHEETS STA. TO STA.

F.A. RTE.	SECTION	COUNTY	TOTAL SHEETS	SHEET NO.
VARIOUS	DIST. 8 LIGHTING 2023-1	St. Clair and Randolph Counties	13	10
CONTRACT NO. 76R85				
ILLINOIS FED. AID PROJECT				

LT-09



EXISTING WALL MOUNTED JUNCTION BOXES AND RACEWAY
N.T.S

FOR DEMOLITION NOTES. SEE "GENERAL NOTES AND LEGEND" DRAWINGS LT-01.

NOTES:

1. CONTRACTOR TO DISCONNECT AND REMOVE CABLE TAGGED "NAV". FROM INSIDE BOX TERMINATION.



EXISTING POLE
N.T.S

MODEL: Default
FILE NAME: G:\1211025C_W03_Navigation\Lighting\03A_Design\01_CADD\02_Sheet\76R85_Kaskaskia_River\0876R85-nht-light_LT-10 - Evansville.dgn



USER NAME	= amassey
PLOT SCALE	= 100,0000 ' / in.
PLOT DATE	= 3/15/2024

DESIGNED	- AM/HM
DRAWN	- AM
CHECKED	- KK/HM
DATE	- 03/15/2024

REVISED	-
REVISED	-
REVISED	-
REVISED	-

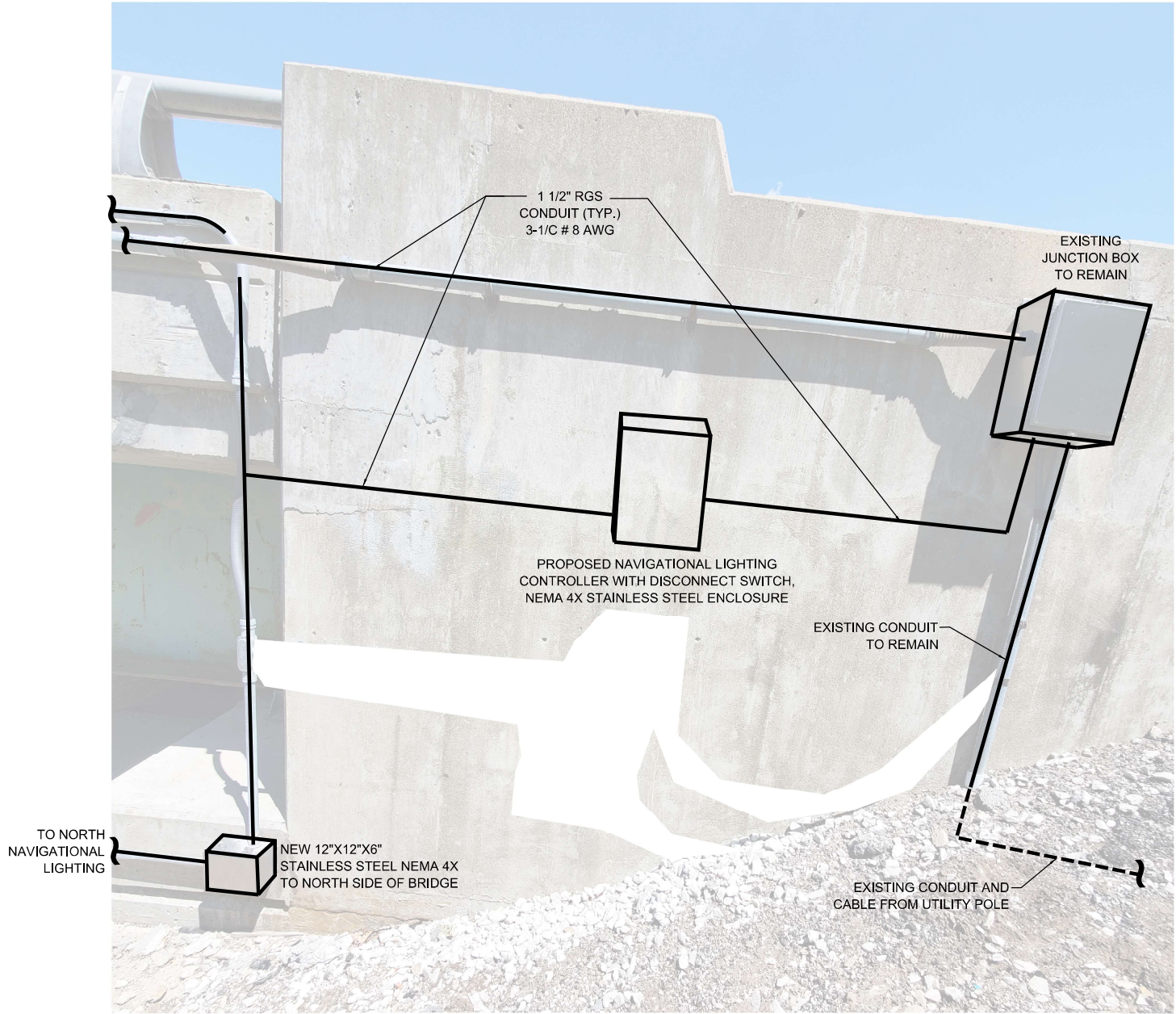
STATE OF ILLINOIS
DEPARTMENT OF TRANSPORTATION

IL 3 OVER KASKASKIA RIVER, EVANSVILLE, IL
MISC. DETAILS

SCALE:	SHEET	OF	SHEETS	STA.	TO	STA.
--------	-------	----	--------	------	----	------

F.A. RTE.	SECTION	COUNTY	TOTAL SHEETS	SHEET NO.
VARIOUS	DIST. 8 LIGHTING 2023-1	St. Clair and Randolph Counties	13	11
CONTRACT NO. 76R85				
ILLINOIS			FED. AID PROJECT	

MODEL: Default
FILE NAME: G:\211025C_W03_Navigational Lighting\03A_Design\01_CADD\02_Sheet\76R85_Kaskaskia_River\0876R85-sh-light-LT-11 - Evansville.dgn

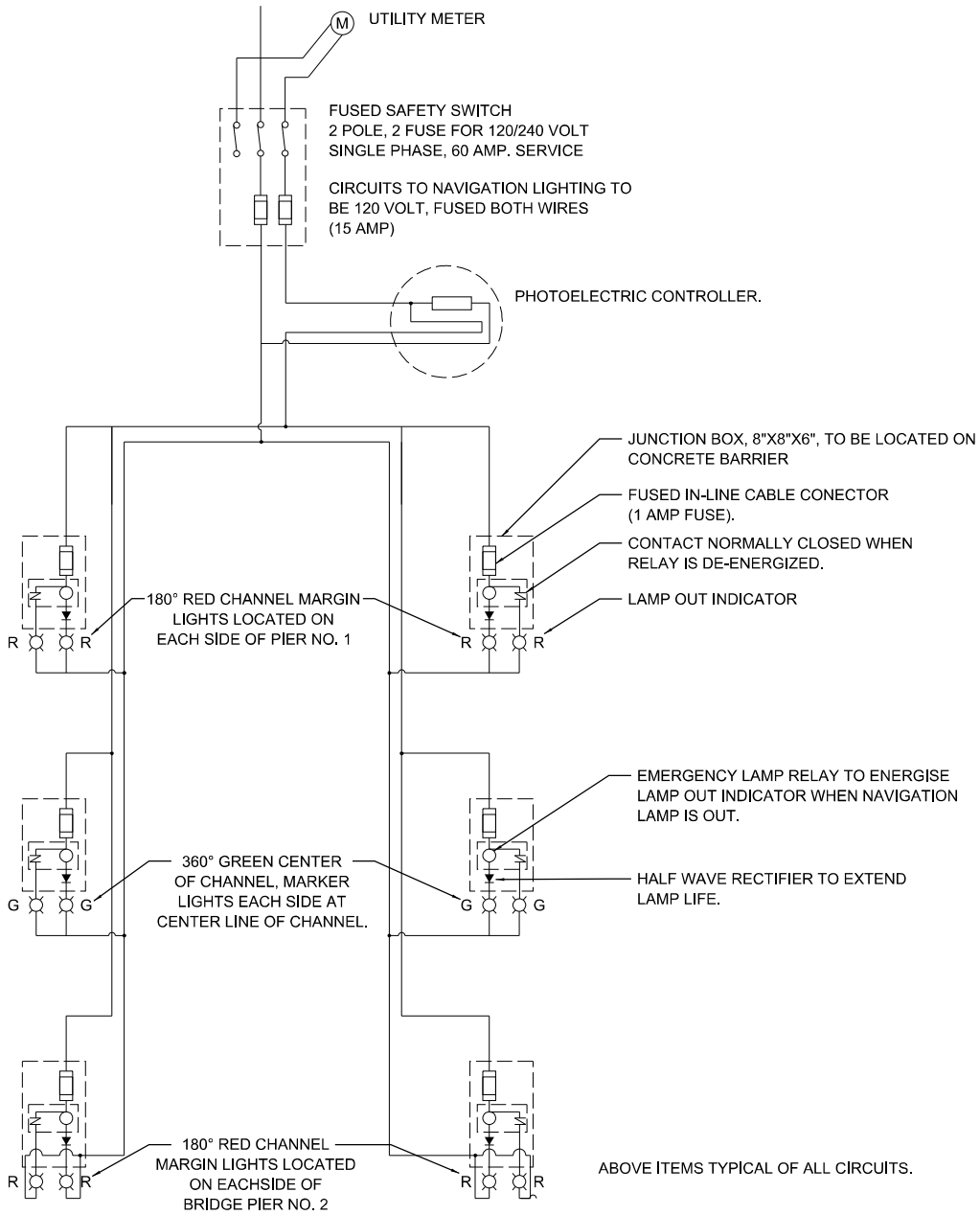


PROPOSED NEW CONTROLLER

N.T.S

NOTES:

- COORDINATE WITH UTILITY FOR POWER SUPPLY TO NEW NAVIGATIONAL LIGHTING SYSTEM.
- INSTALL NEW DISCONNECT SWITCH AND CONTROLLER AS SHOWN. INSTALL NEW UNDERGROUND RACEWAY FROM EXISTING POLE TO NEW DISC. SWITCH VIA. METER AS SHOWN.



CHANNEL WIRING DIAGRAM

N.T.S



USER NAME	= amassey
PLOT SCALE	= 100,0000 ' / in.
PLOT DATE	= 3/15/2024

DESIGNED	- AM/HM
DRAWN	- AM
CHECKED	- KK/HM
DATE	- 03/15/2024

REVISED	-
REVISED	-
REVISED	-
REVISED	-

**STATE OF ILLINOIS
DEPARTMENT OF TRANSPORTATION**

**IL 3 OVER KASKASKIA RIVER, EVANSVILLE, IL
MISC. DETAILS**

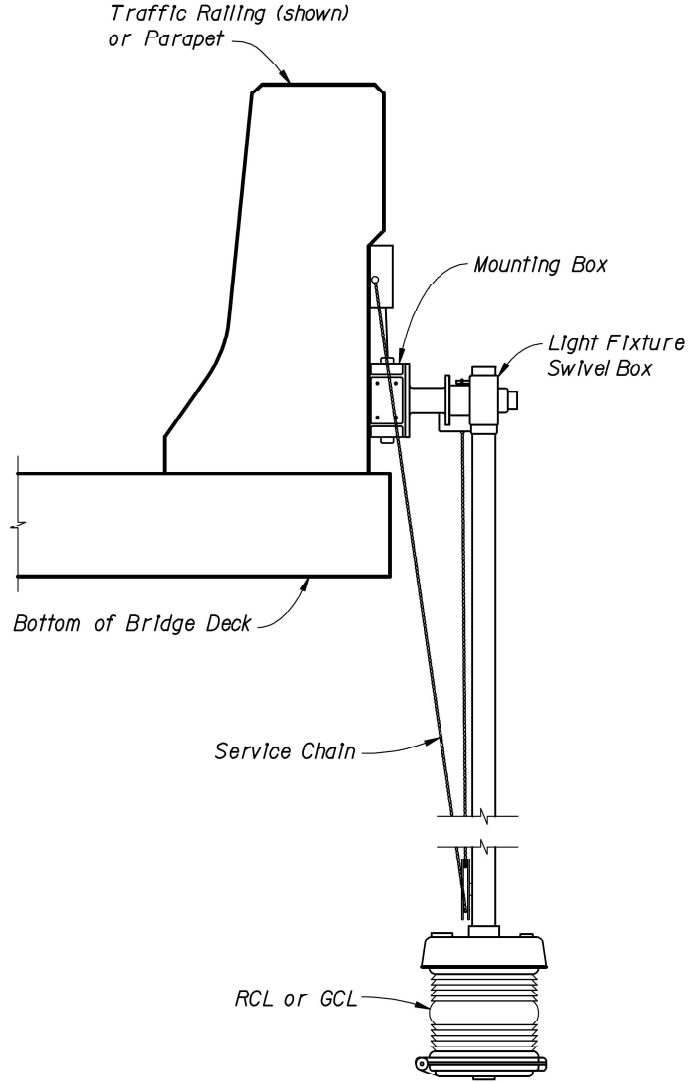
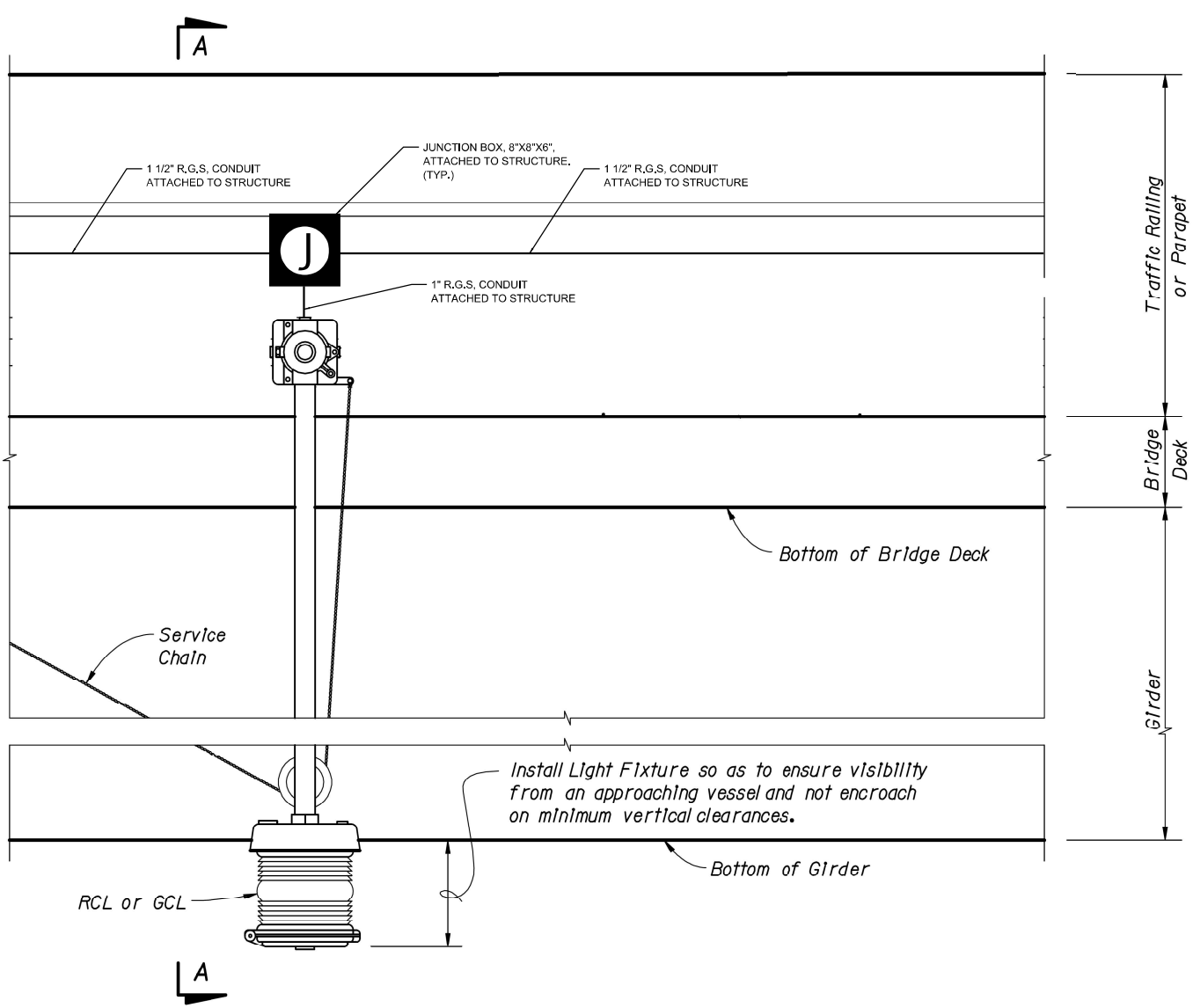
SCALE: SHEET OF SHEETS STA. TO STA.

F.A. RTE.	SECTION	COUNTY	TOTAL SHEETS	SHEET NO.
VARIOUS	DIST. 8 LIGHTING 2023-1	St. Clair and Randolph Counties	13	12
CONTRACT NO. 76R85				
ILLINOIS FED. AID PROJECT				

LT-11

MODEL: Default
FILE NAME: G:\1211025C_W03_Navigational Lighting\03A_Design\01_CADD\02_Sheet\76R85_Kaskaskia_River\0876R85-shl-light_LT-12.dgn

ABBREVIATIONS:
RCL RED CHANNEL LIGHT
GCL GREEN CHANNEL LIGHT



SECTION A-A

NAVIGATIONAL LIGHTING MOUNTING DETAIL - ELEVATION



USER NAME = amassey	DESIGNED - AM/HM	REVISED -
	DRAWN - AM	REVISED -
PLOT SCALE = 100,0000 ' / in.	CHECKED - KK/HM	REVISED -
PLOT DATE = 3/15/2024	DATE - 03/15/2024	REVISED -

STATE OF ILLINOIS
DEPARTMENT OF TRANSPORTATION

IL 3 OVER KASKASKIA RIVER, EVANSVILLE, IL
MISC. DETAILS

SCALE: SHEET OF SHEETS STA. TO STA.

F.A. RTE.	SECTION	COUNTY	TOTAL SHEETS	SHEET NO.
VARIOUS	DIST. 8 LIGHTING 2023-1	St. Clair and Randolph Counties	13	13
CONTRACT NO. 76R85				
ILLINOIS			FED. AID PROJECT	