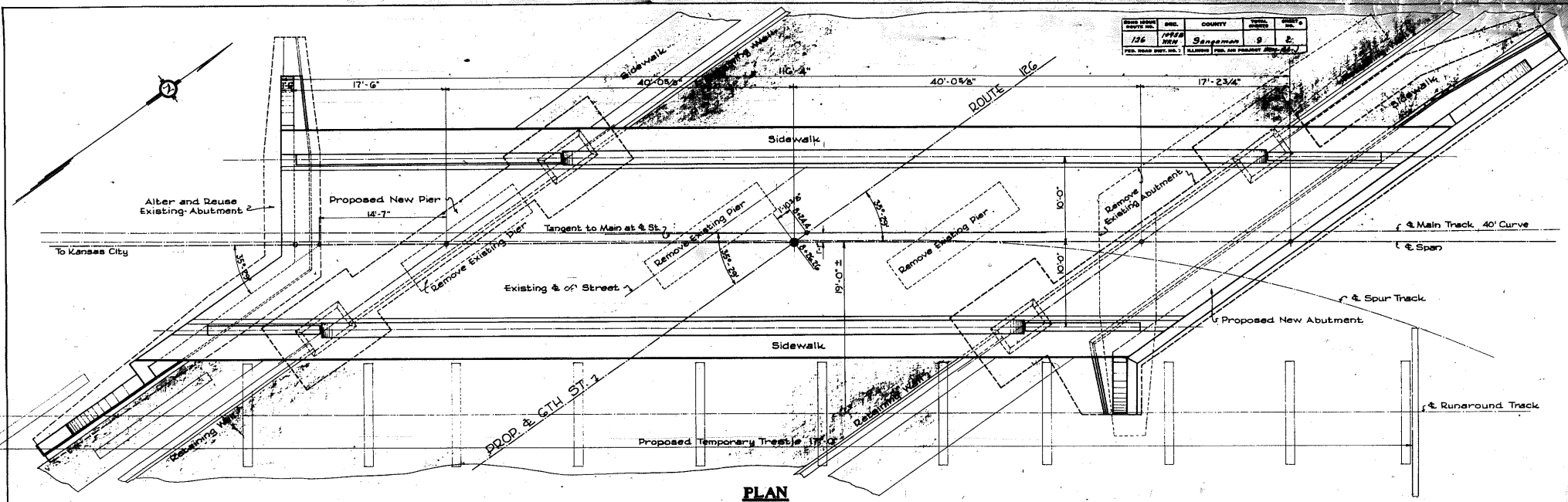
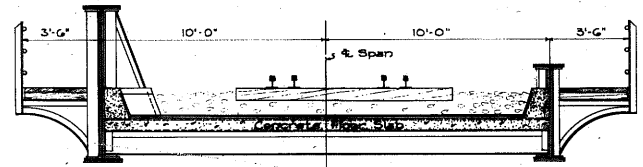


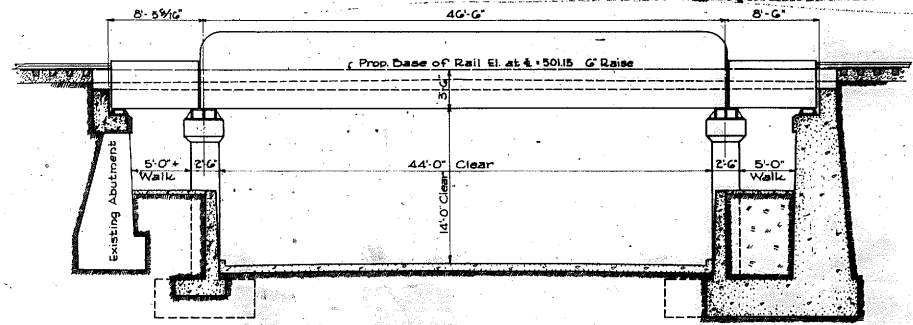
PLAT NO.	SHEET NO.	COUNTY	SECTION	DATE
126	1111	Wagoner	9	2
PUB. ROAD DIST. NO. 1				



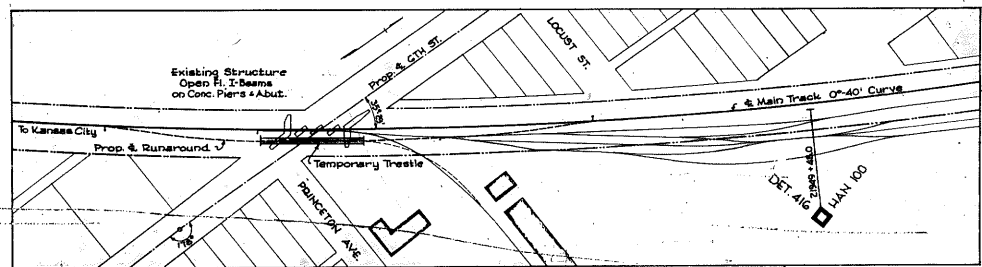
PLAN



SECTION THRU DECK



SECTION AT RIGHT ANGLES TO STREET



BRIDGE QUANTITIES

ITEM	UNIT	AMOUNT
Footing Excavation	C.Y.	245
Footing Concrete		163
Shelf		243
Deck		55
Structural Steel	Lbs.	336,000
Reinforcing		35,600
Deck Waterproofing	Sq.	25
Abut.		12
Asphalt Plank	C.Y.	10
Asphalt on Deck	M.B.M.	2.5
Sidewalk Timber	Lin. Ft.	170
8" Cor. I. Pipe	C.Y.	12.00
Grading		600
Backfill		274
Remove Concrete		
Copper Flashing + Exp. Pits	Lbs.	360
Dowel Holes	EA.	53

LOCATION PLAN

THIS WORK IS TO BE A PART OF THE IMPROVEMENT AND IS TO BE PERFORMED BY WABASH R.R. TEMPORARY TRESTLE + TRACK WORK

ITEM	UNIT	AMOUNT
Temporary Trestle Piling	Lin. Ft.	2300
Timber	M.B.M.	55.0
Remove of Temporary Trestle	Each	1
Remove Structural Steel	Lbs.	61,700
Remove Timber	M.B.M.	10.0

WABASH RAILWAY COMPANY
OFFICE OF THE CHIEF ENGINEER

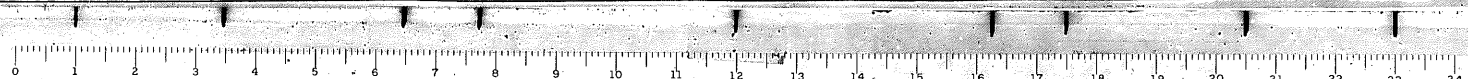
STRUCTURE: **6TH ST. SUBWAY BR. #162**
LOCATION: **ROUTE 126, SPRINGFIELD, ILL.**
DIVISION: **DECATUR**

EXAMINED 12-6-1922
PASSED BY [Signature]
APPROVED BY [Signature]
CHECKED BY A.H.S.

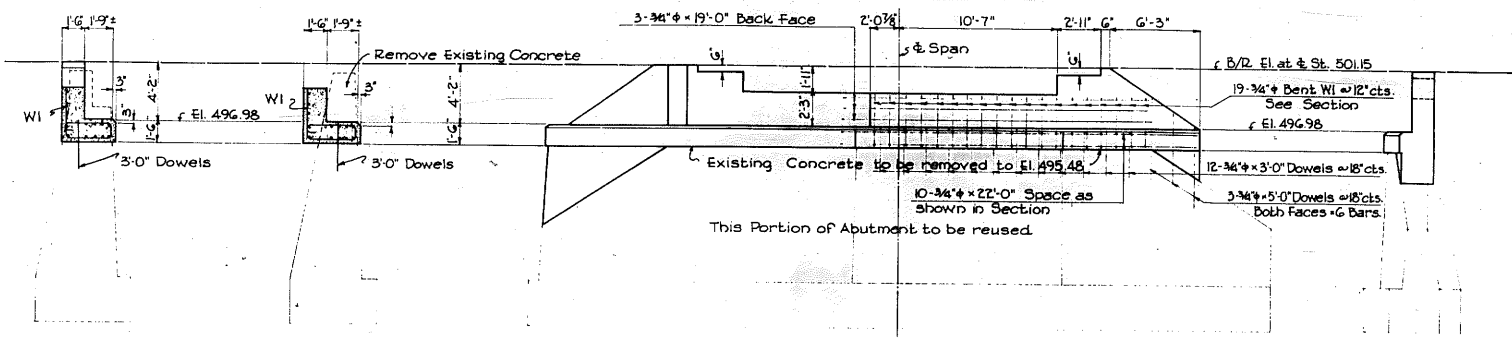
SCALE: 3" = 1'-0"
DATE: Oct. 28, 33
DRAWN BY D.E.D.
TRACED BY D.E.D.
CHECKED BY A.H.S.

GENERAL PLAN

SHEET NO.	NO. OF SHEETS
1	1
PLAN:	
CASE:	



PROJECT NO.	SEC.	COUNTY	SHEET NO.	TOTAL SHEETS
126	SP-28	Springfield	9	5
FOR ROAD DIST. DIST. 11/1/1916 (FOR ALL PROJECTS SEE PLAN)				

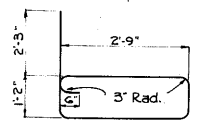


SECTION A-A

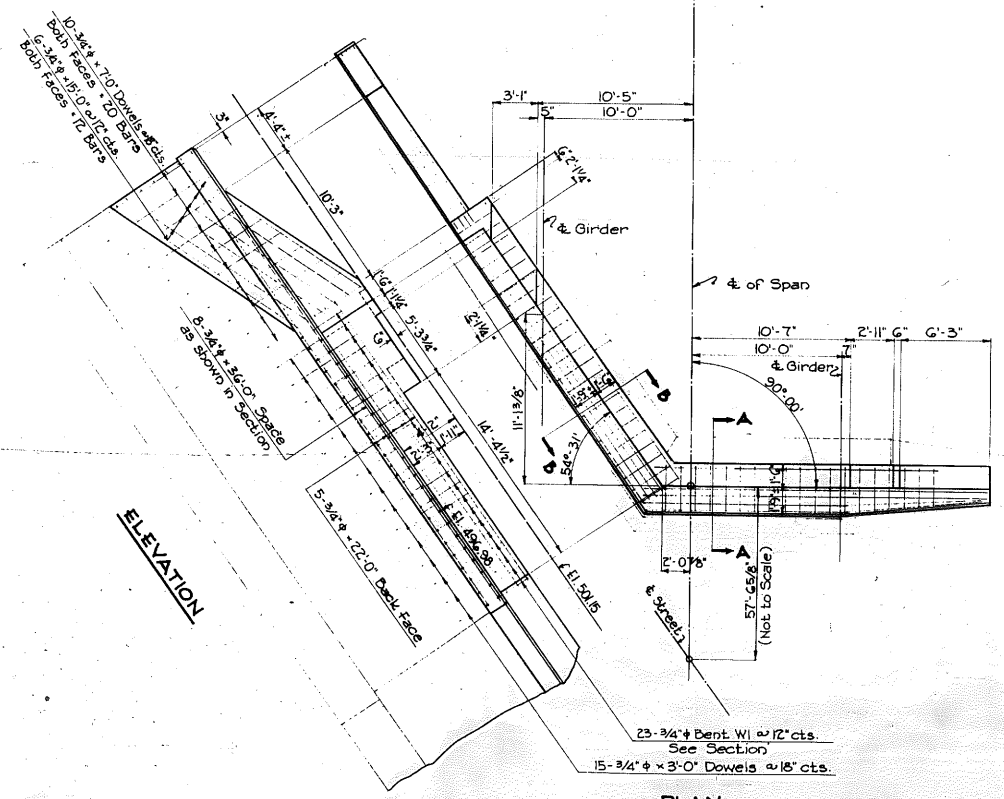
SECTION B-B

ELEVATION

END VIEW



BENT BAR DETAILS



ELEVATION

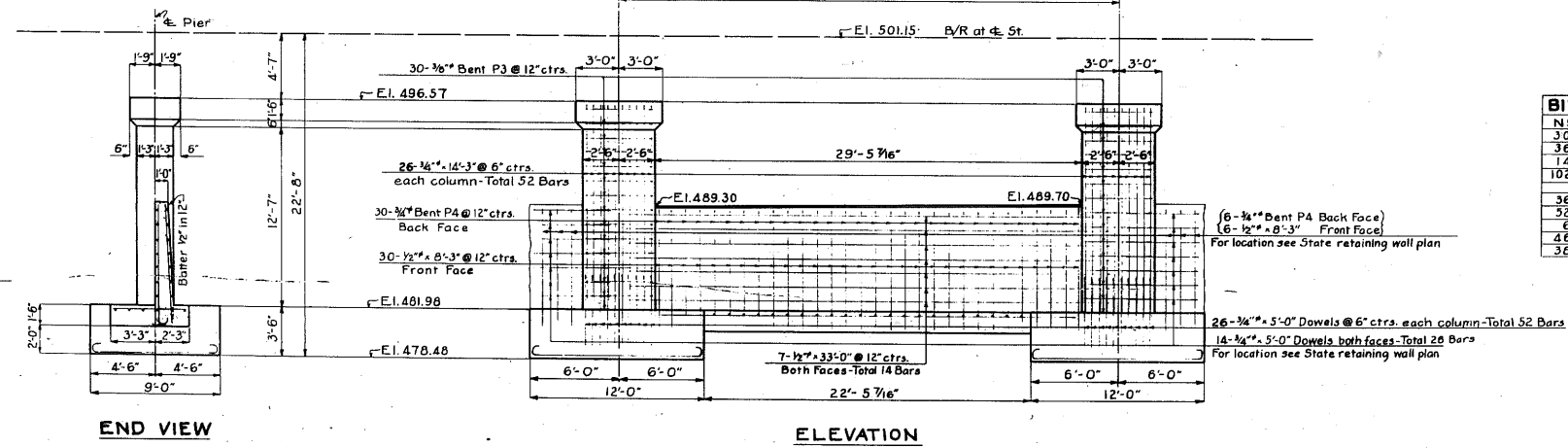
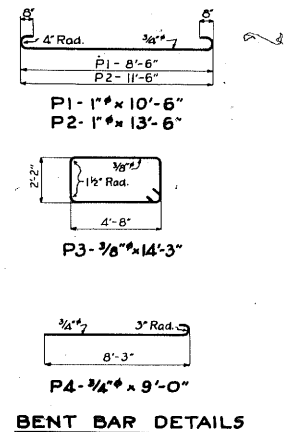
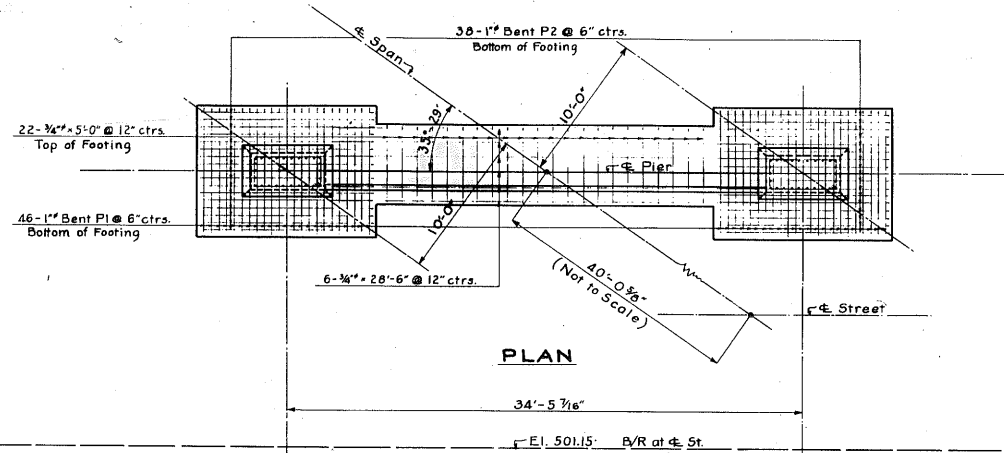
PLAN

BILL OF REINFORCING BARS			DESCRIPTION
42	3/4"	10'-6"	Bridge Seat & Back Wall Bent WI
3	"	19'-0"	Longitudinal in Bent WI
5	"	22'-0"	"
12	"	15'-0"	Wing Wall
10	"	22'-0"	Bridge Seat
8	"	36'-0"	"
27	"	3'-0"	Dowels
6	"	5'-0"	"
20	"	7'-0"	"

Concrete 20 C.Y.
 Reinforcing Steel 2,350 Lbs.
 Dowel Holes 53 Ea.
 Grading 20 C.Y.
 Backfill 20 C.Y.

WABASH RAILWAY COMPANY
 OFFICE OF THE CHIEF ENGINEER
 STRUCTURE: **6TH ST. SUBWAY BR. #182**
 LOCATION: **ROUTE 126 SPRINGFIELD, ILL.**
 DIVISION: **DECATUR**

SCALE: 1" = 1'-0"	SHEET NO. 4	NO. OF SHEETS 5
DATE: Oct. 28, 1933	ALTERATIONS TO WEST ABUTMENT	
DRAWN BY: D.E.D.	PLAN	
TRACED BY: D.E.D.	CASE:	
CHECKED BY: A.H.S.		



NR	SIZE	LENGTH	DESCRIPTION
30	3/8"	14'-3"	Stirrups in columns - Bent P3
36	1/2"	8'-3"	Vertical in wall
14	"	33'-0"	Long in wall
102	3/4"	5'-0"	Trans. in wall footing, Dowels in columns and walls
36	"	9'-0"	Vertical in wall - Bent P4
52	"	14'-3"	Vertical in columns
6	"	28'-6"	Long in wall
46	1"	10'-6"	Long in footing - Bent P1
36	"	13'-6"	Trans. in footing - Bent P2

Footing Concrete 35 C.Y.
Shaft 25 C.Y.
Reinforcing Steel 6,000 Lbs.
Excavation 45 C.Y.

WABASH RAILWAY COMPANY
OFFICE OF THE CHIEF ENGINEER

STRUCTURE: 6TH ST. SUBWAY - BR 182
LOCATION: ROUTE 126 SPRINGFIELD, ILL.
DIVISION: DECATUR

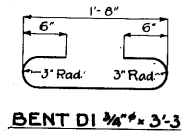
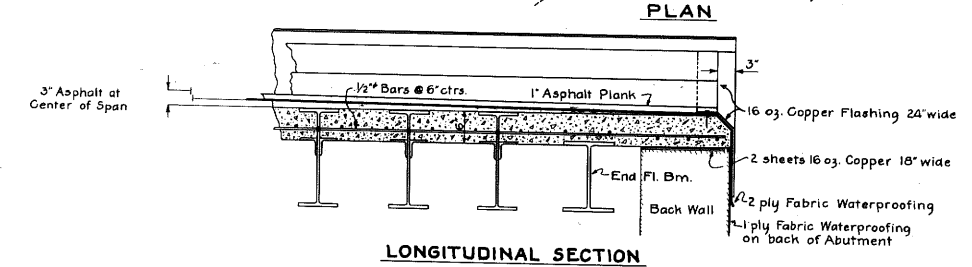
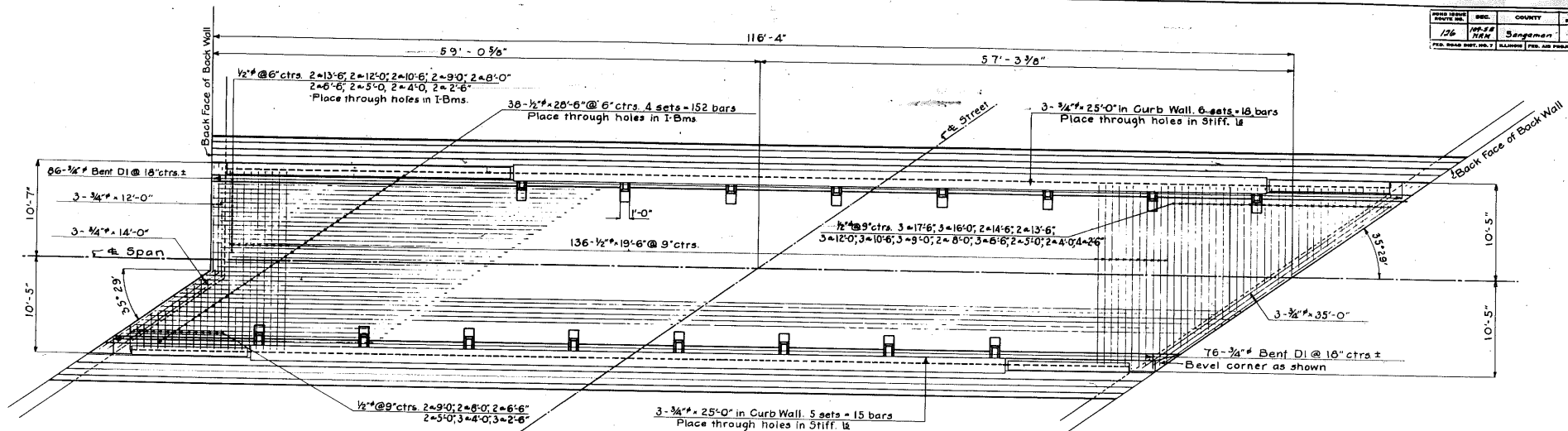
SCALE: 1/4" = 1'-0"
DATE: Oct. 28, 33
DRAWN BY: D.E.B.
CHECKED BY: B.C.L.
DESIGNED BY: A.H.S.

SHEET NO. 5
NO. OF SHEETS

WEST CURB PIER

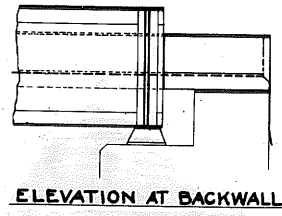
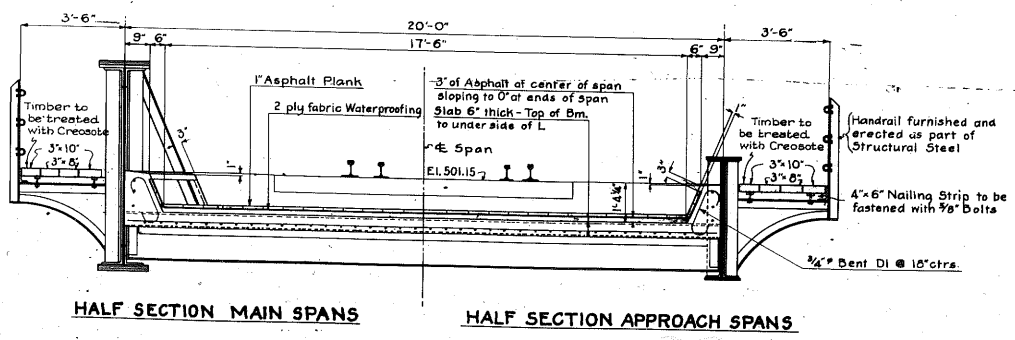
PLAN
CASE:

PROJ. NO.	SEC.	COUNTY	SHEET	TOTAL SHEETS
126	11th	Sangamon	9	7
FED. ROAD DIST. NO. 1 ALLOWED FOR AIR TRAVEL 1916-1917				



NO.	SIZE	LENGTH	DESCRIPTION
152	1/2"	20'-6"	longitudinal
136	"	19'-6"	transverse
3	"	17'-6"	"
3	"	16'-0"	"
2	"	14'-6"	"
4	"	13'-6"	" longitudinal
5	"	12'-0"	"
5	"	10'-6"	"
7	"	9'-0"	"
6	"	8'-0"	"
7	"	6'-6"	"
6	"	5'-0"	"
7	"	4'-0"	"
9	"	2'-6"	"
3	3/4"	35'-0"	in end curb
33	"	25'-0"	long. in side curbs
3	"	14'-0"	in end curb
3	"	12'-0"	"
3	"	3'-3"	in side curbs - bent DI

- Concrete 55 C.Y.
- Reinforcing Steel 7,440 lbs.
- Asphalt Plank 25 Sqs.
- Asphalt 10 C.Y.
- Waterproofing 25 Sqs.
- Copper Flashing & Exp. Pls. 310 lbs.
- Sidewalk Timber 2.5 M.B.M.



WABASH RAILWAY COMPANY
OFFICE OF THE CHIEF ENGINEER

STRUCTURE: 6TH ST. SUBWAY - BR. 182
LOCATION: ROUTE 126 SPRINGFIELD, ILL.
DIVISION: DECATUR

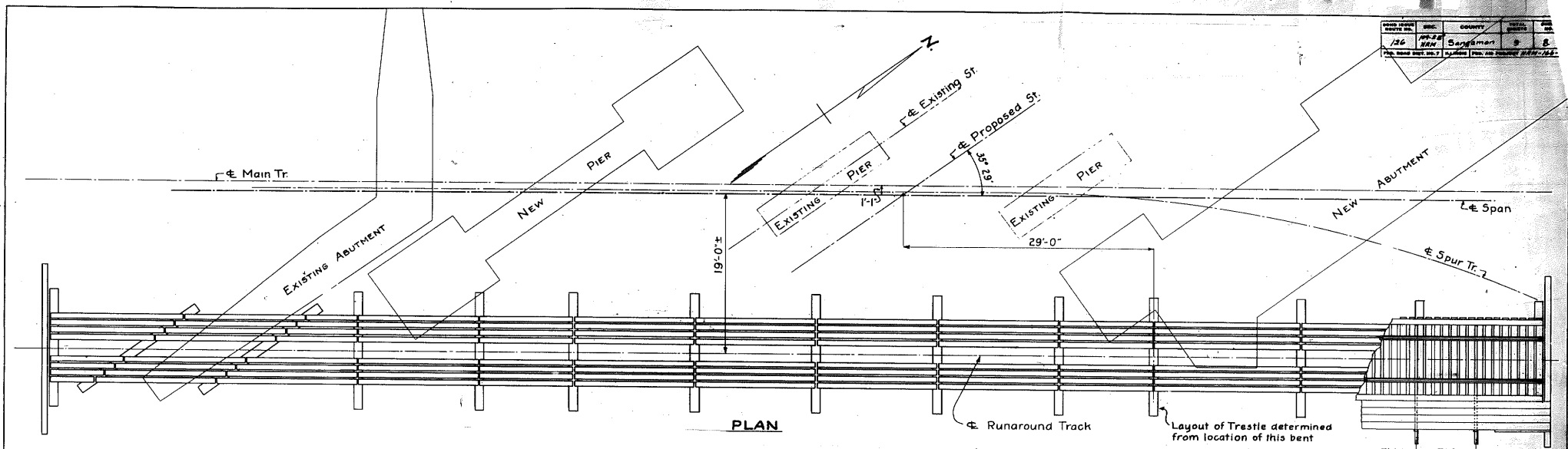
SCALE: 3/8", 1/2" = 1'-0"
DATE: Oct. 26, 33
DRAWN BY: D.E.B.
CHECKED BY: D.C.L.
TRACED BY: A.H.S.

SHEET NO.	NO. OF SHEETS
6	9

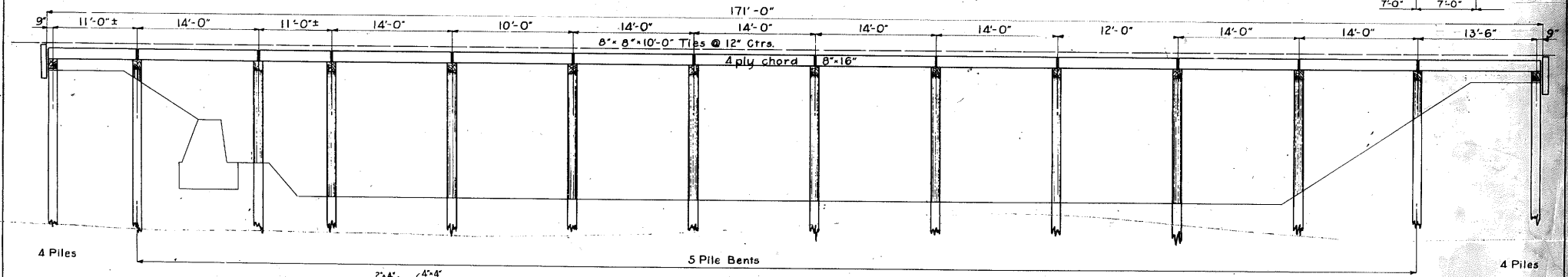
PLAN



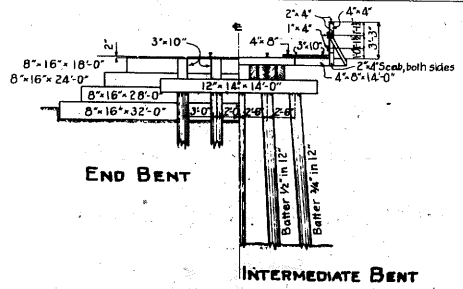
Sheet No.	36	Proj. No.	10-28	City	Springfield	Sheet	3	of	8
Drawn by	D.E.B.	Checked by	A.H.S.	Date	Oct. 28, 33	Scale	3/16"=1'-0"	Plan	



PLAN



LONGITUDINAL SECTION



BILL OF MATERIAL			
ITEM	LENGTH	NO.	DESC.
4" x 8"	14'	50	Ord. Rail Side Wk.
8" x 8"	10'	171	Ties
8" x 16"	14'	78	Stringers
8" x 16"	12'	8	-
8" x 16"	10'	8	-
8" x 16"	16'	6	-
8" x 16"	18'	2	Bulkhead
8" x 16"	24'	2	-
8" x 16"	28'	2	-
8" x 16"	32'	2	-
3" x 10"	6'	8	-
12" x 14"	14'	12	Caps
12" x 14"	16'	2	-
Piles		68	
3" x 10"	14'	50	Side Walk
4" x 4"	3'-9"	26	-
2" x 4"	14'	24	-
1" x 4"	14'	26	-

Piling 2300 Lin. Ft.
Timber 33 M.B.M.

WABASH RAILWAY COMPANY
OFFICE OF THE CHIEF ENGINEER

STRUCTURE: **SIXTH ST. SUBWAY**
LOCATION: **SPRINGFIELD, ILL.**
DIVISION: **DECATUR**

SCALE: 3/16"=1'-0"

DATE: Oct. 28, 33
DRAWN BY: D.E.B.
CHECKED BY: A.H.S.

TEMPORARY TRESTLE

SHEET NO.	7	NO. OF SHEETS	
PLAN		CASE	

PROJECT NO.	SEC.	COUNTY	TOTAL SHEETS	SHEET NO.
126	109-S	Sangerman	27	7
FED. ROAD DIST. NO. 7 ILLINOIS FED. AID PROJECT 126-1095				

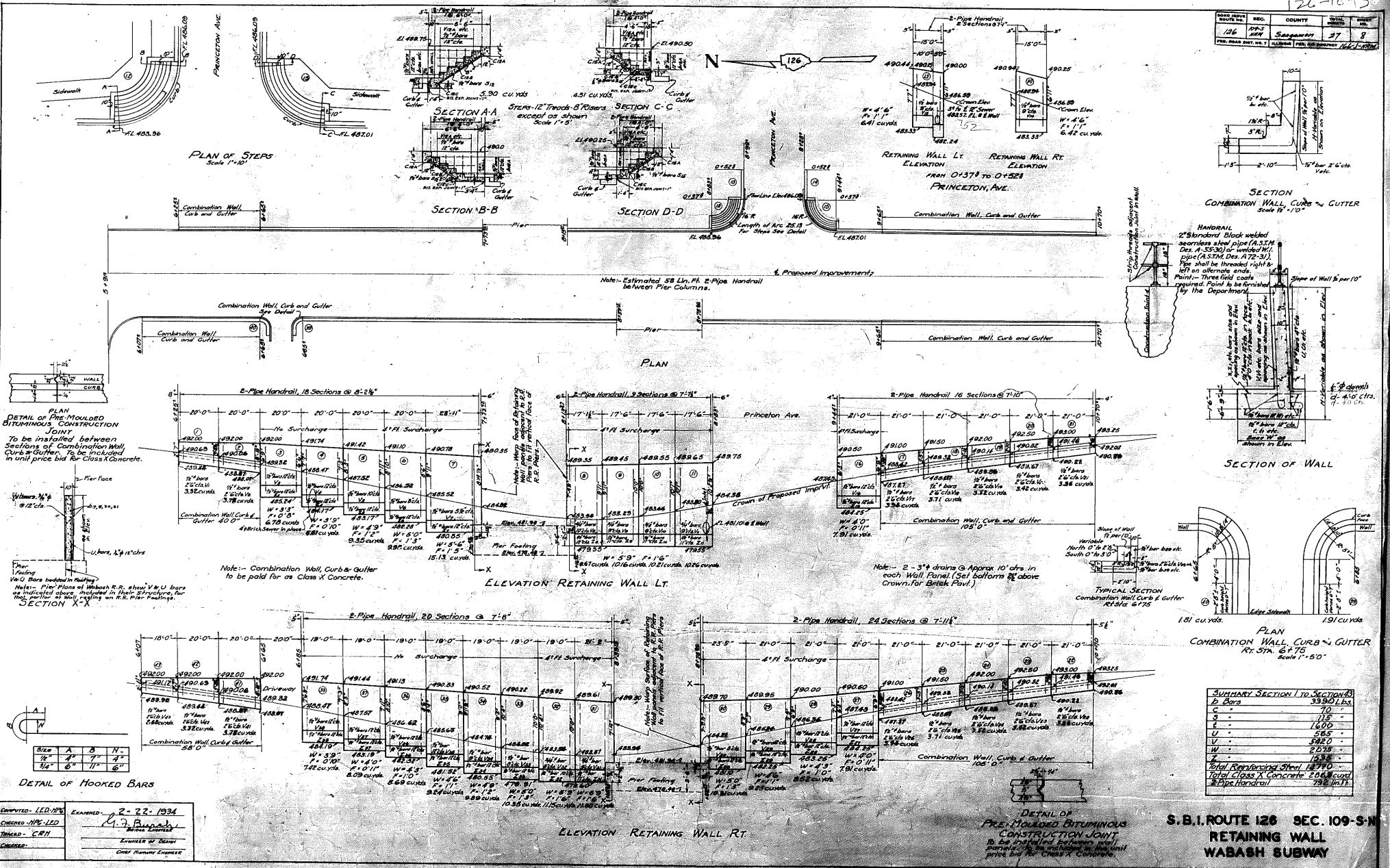
Wall Section	Bar	Bar Spacing	Dist	Length	Bar	Bar Spacing	Dist	Length	Bar	Bar Spacing	Dist	Length	Bar	Bar Spacing	Dist	Length	Bar	Bar Spacing	Dist	Length	Bar	Bar Spacing	Dist	Length	Steel Lbs	Concrete Cu Yds		
Section 1	V1	8 1/2"	5'-9"	b1	2 1/2"	19'-0"																			57	3.32		
Section 2	V2	8 1/2"	6'-0"	b2	2 1/2"	19'-0"																			61	3.78		
Section 3	V3	20 1/2"	6'-0"	b3	7 1/2"	19'-0"	U3	5 1/2"	5'-0"	W3	7 1/2"	19'-0"	13	20 1/2"	3'-9"	Z3	20 1/2"	3'-0"							376	6.78		
Section 4	V4	20 1/2"	7'-3"	b4	8 1/2"	19'-0"	U4	5 1/2"	6'-0"	W4	7 1/2"	19'-0"	14	20 1/2"	4'-3"	Z4	20 1/2"	3'-0"							416	6.61		
Section 5	V5	24 1/2"	8'-0"	b5	9 1/2"	19'-0"	U5	5 1/2"	6'-0"	W5	7 1/2"	19'-0"	15	20 1/2"	5'-3"	Z5	20 1/2"	4'-0"							524	9.35		
Section 6	V6	30 1/2"	8'-6"	b6	9 1/2"	19'-0"	U6	5 1/2"	7'-0"	W6	7 1/2"	19'-0"	16	20 1/2"	5'-6"	Z6	20 1/2"	4'-0"							525	9.98		
Section 7	V7	36 1/2"	9'-6"	b7	22 1/2"	15'-0"	U7	7 1/2"	8'-0"	W7	7 1/2"	25'-0"	17	25 1/2"	6'-0"	Z7	25 1/2"	5'-3"							1039	15.13		
Section 8	V8	16 1/2"	10'-3"	b8	11 1/2"	16'-6"	U8	5 1/2"	8'-0"	W8	7 1/2"	13'-0"	18	14 1/2"	6'-3"	Z8	14 1/2"	5'-0"							580	8.67		
Section 9	V9	23 1/2"	10'-3"	b9	11 1/2"	17'-0"	U9	5 1/2"	8'-0"	W9	7 1/2"	17'-0"	19	18 1/2"	6'-3"	Z9	19 1/2"	5'-0"							749	10.16		
Section 10	V10	23 1/2"	10'-3"	b10	11 1/2"	17'-0"	U10	5 1/2"	8'-0"	W10	7 1/2"	17'-0"	110	18 1/2"	6'-3"	Z10	19 1/2"	5'-0"							751	10.21		
Section 11	V11	23 1/2"	10'-0"	b11	11 1/2"	17'-0"	U11	5 1/2"	8'-0"	W11	7 1/2"	17'-0"	111	18 1/2"	6'-3"	Z11	19 1/2"	5'-0"							759	10.26		
Section 12	V12a	1 1/2"	4'-9"	b12a	2 1/2"	5'-0"																						
	V12b	1 1/2"	4'-0"	b12b	2 1/2"	4'-3"																						
	V12c	1 1/2"	3'-6"	b12c	2 1/2"	3'-0"																						
	V12d	2 1/2"	2'-9"																									
	V12e	2 1/2"	2'-0"																									
Section 13	V13	20 1/2"	7'-0"	b13	8 1/2"	14'-0"	U13	4 1/2"	5'-0"	W13a	7 1/2"	9'-0"	113	15 1/2"	5'-0"	Z13	15 1/2"	4'-3"										
										W13b	7 1/2"	4'-0"																
Section 14	V14	20 1/2"	7'-0"	b14	8 1/2"	14'-0"	U14	4 1/2"	5'-0"	W14	7 1/2"	14'-0"	114	15 1/2"	5'-0"	Z14	15 1/2"	4'-3"										
Section 15	V15a	2 1/2"	3'-6"	b15a	2 1/2"	4'-0"																						
	V15b	2 1/2"	2'-9"	b15b	2 1/2"	3'-0"																						
	V15c	2 1/2"	2'-0"	b15c	2 1/2"	1'-6"																						
Section 16	V16	21 1/2"	6'-3"	b16	7 1/2"	20'-0"	U16	6 1/2"	5'-0"	W16	7 1/2"	20'-0"	116	21 1/2"	4'-0"	Z16	21 1/2"	3'-9"										
Section 17	V17	9 1/2"	6'-6"	b17	2 1/2"	20'-0"																						
Section 18	V18	9 1/2"	6'-3"	b18	2 1/2"	20'-0"																						
Section 19	V19	9 1/2"	6'-0"	b19	2 1/2"	20'-0"																						
Section 20	V20	9 1/2"	6'-0"	b20	2 1/2"	20'-0"																						
Section 21	V21	9 1/2"	5'-6"	b21	2 1/2"	20'-0"																						
Section 22	V22	9 1/2"	5'-0"	b22	2 1/2"	20'-0"																						
Section 23	V23	9 1/2"	6'-0"	b23	2 1/2"	20'-0"																						
Section 24	V24	9 1/2"	6'-0"	b24	2 1/2"	20'-0"																						
Section 25	V25	9 1/2"	6'-3"	b25	2 1/2"	20'-0"																						
Section 26	V26	9 1/2"	6'-0"	b26	2 1/2"	20'-0"																						
Section 27	V27	21 1/2"	6'-3"	b27	7 1/2"	20'-0"	U27	6 1/2"	5'-0"	W27	7 1/2"	20'-0"	127	21 1/2"	4'-0"	Z27	21 1/2"	3'-9"										
Section 28	V28	21 1/2"	6'-9"	b28	8 1/2"	20'-0"	U28	6 1/2"	5'-0"	W28	7 1/2"	20'-0"	128	21 1/2"	4'-9"	Z28	21 1/2"	4'-0"										
Section 29	V29	21 1/2"	7'-9"	b29	9 1/2"	20'-0"	U29	6 1/2"	6'-0"	W29	7 1/2"	20'-0"	129	21 1/2"	5'-0"	Z29	21 1/2"	4'-3"										
Section 30	V30	30 1/2"	6'-6"	b30	10 1/2"	23'-0"	U30	5 1/2"	7'-0"	W30	7 1/2"	19'-0"	130	20 1/2"	5'-0"	Z30	20 1/2"	4'-9"										
Section 31	V31	24 1/2"	10'-0"	b31	12 1/2"	20'-0"	U31	5 1/2"	8'-0"	W31	7 1/2"	17'-0"	131	18 1/2"	6'-3"	Z31	19 1/2"	5'-0"										
Section 32	V32	21 1/2"	10'-0"	b32	12 1/2"	18'-6"	U32	5 1/2"	8'-0"	W32	7 1/2"	18'-0"	132	19 1/2"	6'-3"	Z32	23 1/2"	5'-6"										
Section 33	V33	27 1/2"	10'-0"	b33	12 1/2"	18'-6"	U33	5 1/2"	8'-0"	W33	7 1/2"	18'-0"	133	19 1/2"	5'-6"	Z33	19 1/2"	4'-9"										
Section 34	V34	25 1/2"	9'-9"	b34	12 1/2"	18'-0"	U34	5 1/2"	8'-0"	W34	7 1/2"	18'-0"	134	19 1/2"	5'-3"	Z34	19 1/2"	4'-0"										
Section 35	V35	19 1/2"	9'-0"	b35	10 1/2"	18'-0"	U35	5 1/2"	7'-0"	W35	7 1/2"	18'-0"	135	19 1/2"	5'-0"	Z35	19 1/2"	4'-3"										
Section 36	V36	19 1/2"	8'-0"	b36	9 1/2"	18'-0"	U36	5 1/2"	7'-0"	W36	7 1/2"	18'-0"	136	19 1/2"	4'-9"	Z36	19 1/2"	4'-0"										
Section 37	V37	19 1/2"	8'-0"	b37	9 1/2"	18'-0"	U37	5 1/2"	7'-0"	W37	7 1/2"	18'-0"	137	19 1/2"	4'-9"	Z37	19 1/2"	3'-9"										
Section 38	V38	19 1/2"	7'-3"	b38	8 1/2"	18'-0"	U38	5 1/2"	6'-0"	W38	7 1/2"	18'-0"	138	19 1/2"	4'-3"	Z38	19 1/2"	3'-6"										
Section 39	V39a	2 1/2"	6'-9"	b39	2 1/2"	9'-0"																						
	V39b	2 1/2"	5'-9"																									
	V39c	2 1/2"	4'-9"																									
	V39d	1 1/2"	3'-0"																									
Section 40	V40a	2 1/2"	6'-9"	b40	2 1/2"	9'-0"																						
	V40b	2 1/2"	5'-9"																									
	V40c	2 1/2"	4'-9"																									
	V40d	1 1/2"	3'-0"																									
Section 41	V41	8 1/2"	6'-6"	b41	2 1/2"	19'-0"																						
Section 42	V42	8 1/2"	5'-9"	b42	2 1/2"	19'-0"																						
Section 43	V43	7 1/2"	5'-6"	b43	2 1/2"	17'-0"																						
TOTAL	U/S Reinforcing Steel		5420	U/S Reinforcing Steel		3390	U/S Reinforcing Steel		565	U/S Reinforcing Steel		2075	U/S Reinforcing Steel		1000	U/S Reinforcing Steel		1535	U/S Reinforcing Steel		70	U/S Reinforcing Steel		115	18770	226.90		

Extra Reinforcing Bars Required

Bar	Dist	Size	Length	Weight
U	12"	5"	2'-0"	166 lbs

No. of Bars 'd' for each section same as No. shown marked U

ROUTE NO.	SEC.	COUNTY	SHEET NO.	TOTAL SHEETS
126	109-3	Sagadahoc	37	8
PROJ. NAME	DATE	DESIGNER	DATE	
RETAINING WALL	1/21/34	W. J. BARNARD	1/21/34	



COMPUTED - LED:1934
 CHECKED - HPC:LED
 DRAWN - C.R.H.
 ENGINEER - W. J. BARNARD

S.B.I. ROUTE 126 SEC. 109-3-N
 RETAINING WALL
 WABASH SUBWAY

