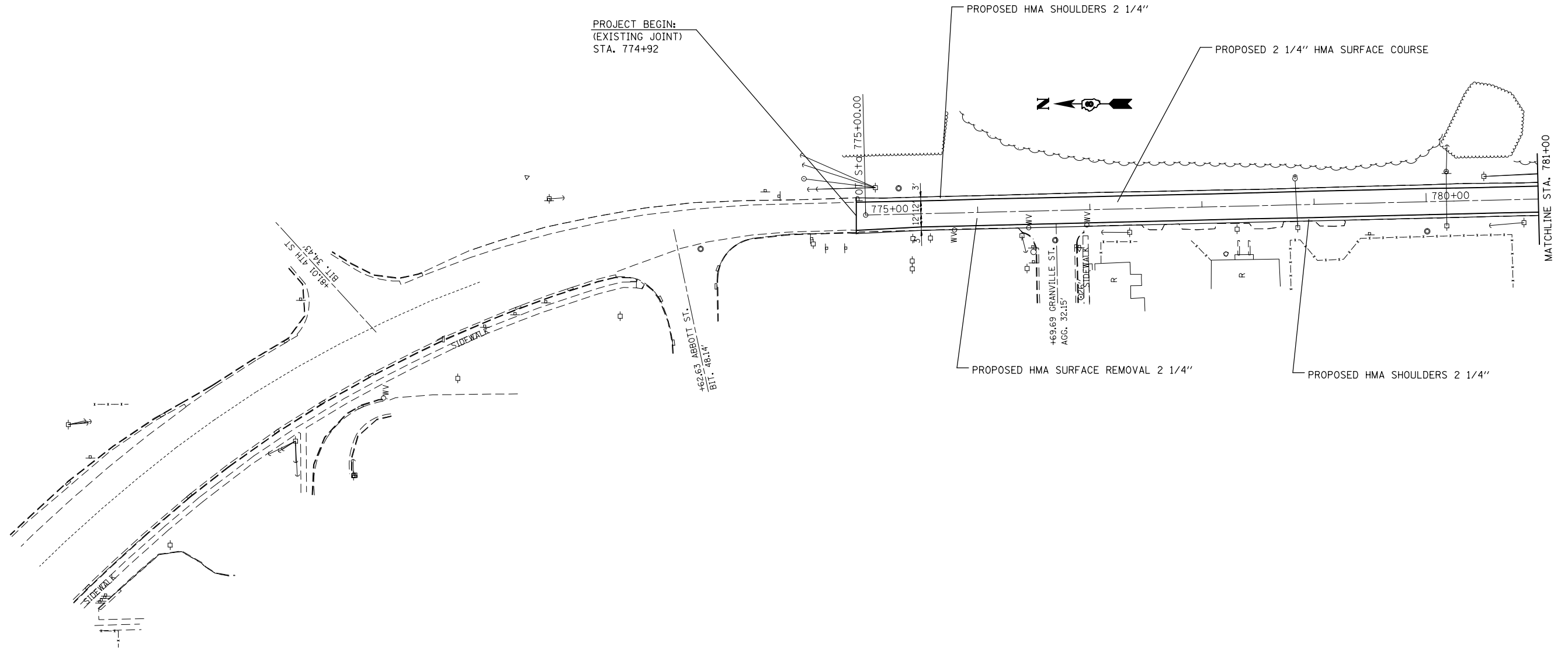


EXIST. CURVE C2
 PI STA. = 12+62.92
 $\Delta = 17^\circ 15' 33''$ (RT)
 $D = 7^\circ 17' 18''$
 $R = 786.12'$
 $T = 119.30'$
 $L = 236.80'$
 $E = 9.00'$
 $e = \text{-----}$
 $T.R. = \text{-----}$
 $S.E. \text{ RUN} = \text{-----}$
 $P.C. \text{ STA.} = 11+43.61$
 $P.T. \text{ STA.} = 13+80.41$



FILE NAME =	USER NAME = milleraj	DESIGNED -	REVISED -
et:\pw\work\p1dot\milleraj\d0338686\d876g36-sht-plan.dgn		DRAWN -	REVISED -
	PLOT SCALE = 100.0000' / in.	CHECKED -	REVISED -
#MODELNAME#	PLOT DATE = 5/10/2013	DATE -	REVISED -

**STATE OF ILLINOIS
 DEPARTMENT OF TRANSPORTATION**

PLAN VIEW

SCALE: 50 SHEET OF SHEETS STA. TO STA.

***ST. CLAIR AND MADISON**

F.A.U. RTE.	SECTION	COUNTY	TOTAL SHEETS	SHEET NO.
9166	510RS-3, 90RS-1	*	34	12
			CONTRACT NO. 76G36	
ILLINOIS FED. AID PROJECT				