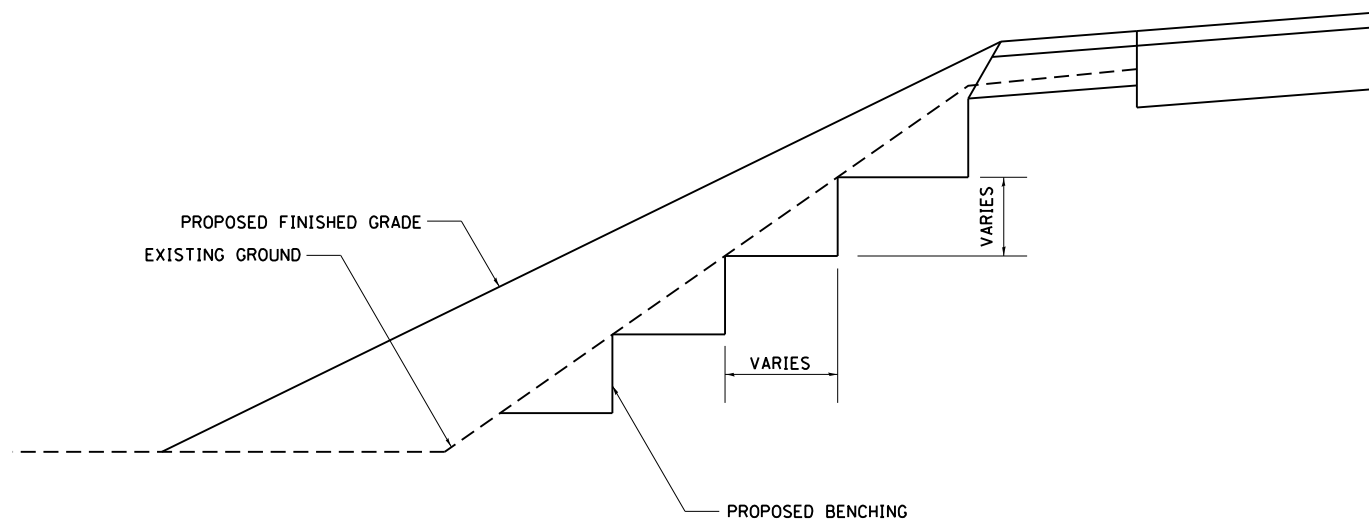


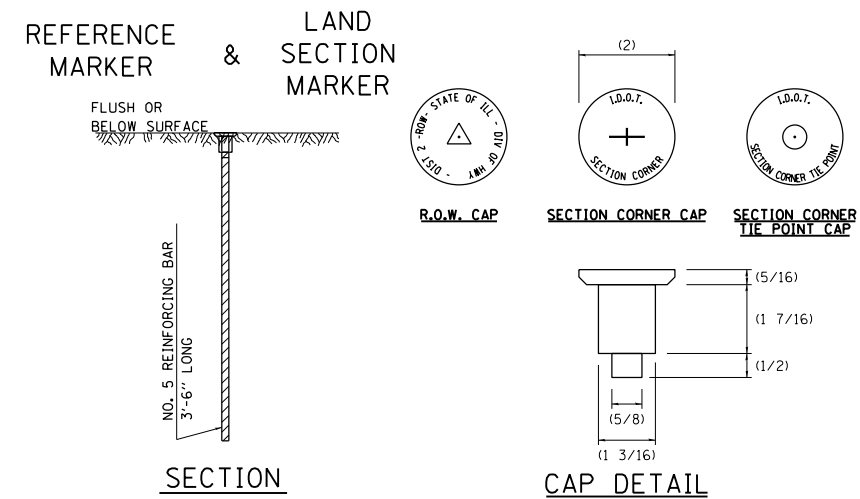
# TYPICAL BENCHING ON EXISTING EMBANKMENT



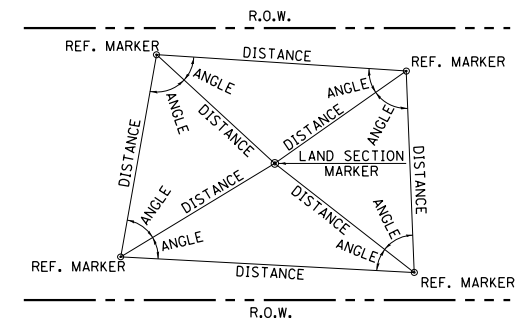
REVISED - 2-22-06

TYPICAL BENCHING ON EXISTING EMBANKMENT 50.4

# LAND SECTION & REFERENCE MARKERS



## METHOD OF REFERENCING MARKERS



## METHOD OF REFERENCING POINTS

REFERENCE MARKERS SHALL BE USED TO TIE IN PERMANENT LAND SECTION AND 1/4 SECTION CORNERS. WHERE LAND SECTION MARKERS FALL IN THE SHOULDERS OR GRAVEL SURFACES, THE TOP OF THE BAR SHALL BE KEPT 3" BELOW THE SURFACE. LAND SECTION MARKERS LOCATED IN TRAFFIC LANES SHALL BE REPLACED BY CORE DRILL AND RESETTING PIN.

ALUMINUM CAPS SHALL BE PLACED ON TOP OF THE REINFORCEMENT BAR. THERE ARE 3 TYPES OF CAPS, ONE FOR THE RIGHT-OF-WAY CORNERS, ONE FOR THE SECTION CORNERS AND ONE FOR THE SECTION CORNER TIE POINTS. THE CAPS WILL BE SUPPLIED BY THE SURVEYOR WHO IS RESPONSIBLE FOR MONUMENTING CORNERS.

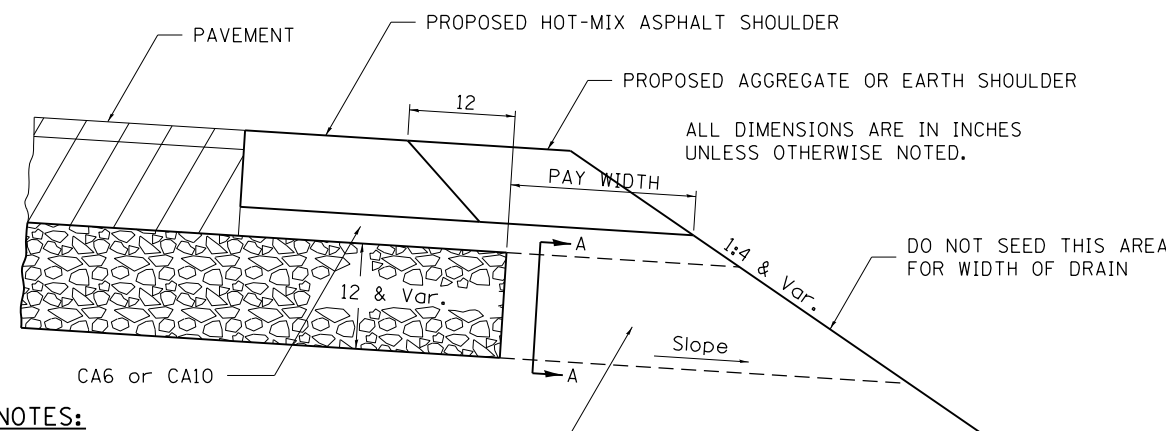
REVISED - 3-05-10

- USE INSTRUMENT TIES TO NEARBY LAND-MARKS (STEEPLES, TOWERS, SILOS, ETC...)
- IN CULTIVATED FIELDS, SET 28" OR MORE BELOW GROUND SURFACE.
- IN FENCE LINE OR PROTECTED AREA SET TOP AT GROUND LEVEL SO AS NOT TO BE DISTURBED BY MOWING.

ALL DIMENSIONS ARE IN INCHES UNLESS OTHERWISE NOTED.

LAND SECTION & REFERENCE MARKERS 63.4

# DRAIN FOR AGGREGATE BASE COURSE



## NOTES:

The rock outlets shall be constructed using CA7 and will be paid for at the contract unit price per CUBIC YARD for FRENCH DRAINS. The thickness shall be the same as the adjacent sub-base material as noted on the plans and shall include the cost of the filter fabric. The Rock outlets will be measured in CU YD, the width being 36 by the length shown above. The cost of the CA6 or CA10 under the shoulder shall be included in the contract unit price per SQ. YD. for AGGREGATE SUBGRADE IMPROVEMENT of the thickness specified. The filter fabric to be used shall conform to the filter fabric used for FRENCH DRAINS.

ROCK OUTLET AT ALL LOW POINTS TO BE 36 WIDE AND EXTEND TO FORESLOPE

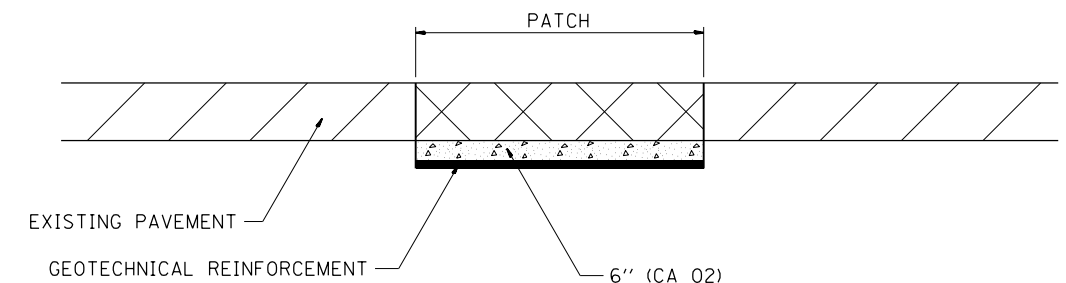


NOTE: Slope same as shoulder with 2% min.

REVISED - 10-09-12

DRAIN FOR AGGREGATE BASE COURSE 96.4

# SUBGRADE REPLACEMENT



## NOTES:

THE CA 02 SHALL BE COMPACTED IN A MANNER APPROVED BY THE ENGINEER. IF THE MOISTURE CONTENT OF THE MATERIAL IS SUCH THAT COMPACTION SATISFACTORY TO THE ENGINEER CANNOT BE OBTAINED, SUFFICIENT WATER SHALL BE ADDED SO THAT SATISFACTORY COMPACTION CAN BE OBTAINED.

THE CA 02 SHALL BE PAID FOR AT THE CONTRACT UNIT PRICE PER CU YD FOR AGGREGATE SUBGRADE IMPROVEMENT WHICH SHALL ALSO INCLUDE ALL EARTH EXCAVATION.

THE GEOTECHNICAL REINFORCEMENT WILL BE PAID FOR AT THE CONTRACT UNIT PRICE PER SQ YD FOR GEOTECHNICAL REINFORCEMENT.

ALL DIMENSIONS ARE IN INCHES UNLESS OTHERWISE NOTED.

REVISED - 3-13-13

REVISED -

REVISED -

REVISED -

## REGION 2 / DISTRICT 2 STANDARD

SCALE: 100.0000' / 1" SHEET NO. OF SHEETS STA. TO STA.

F.A.P. RTE.	SECTION	COUNTY	TOTAL SHEETS	SHEET NO.
599	(83MFT & 103MFT)W	ROCK ISLAND	340	214
CONTRACT NO. 64H11				

FED. ROAD DIST. NO. ILLINOIS FED. AID PROJECT

SUBGRADE REPLACEMENT 97.4

PLOT DATE = Wed Mar 20 11:04:09 2013