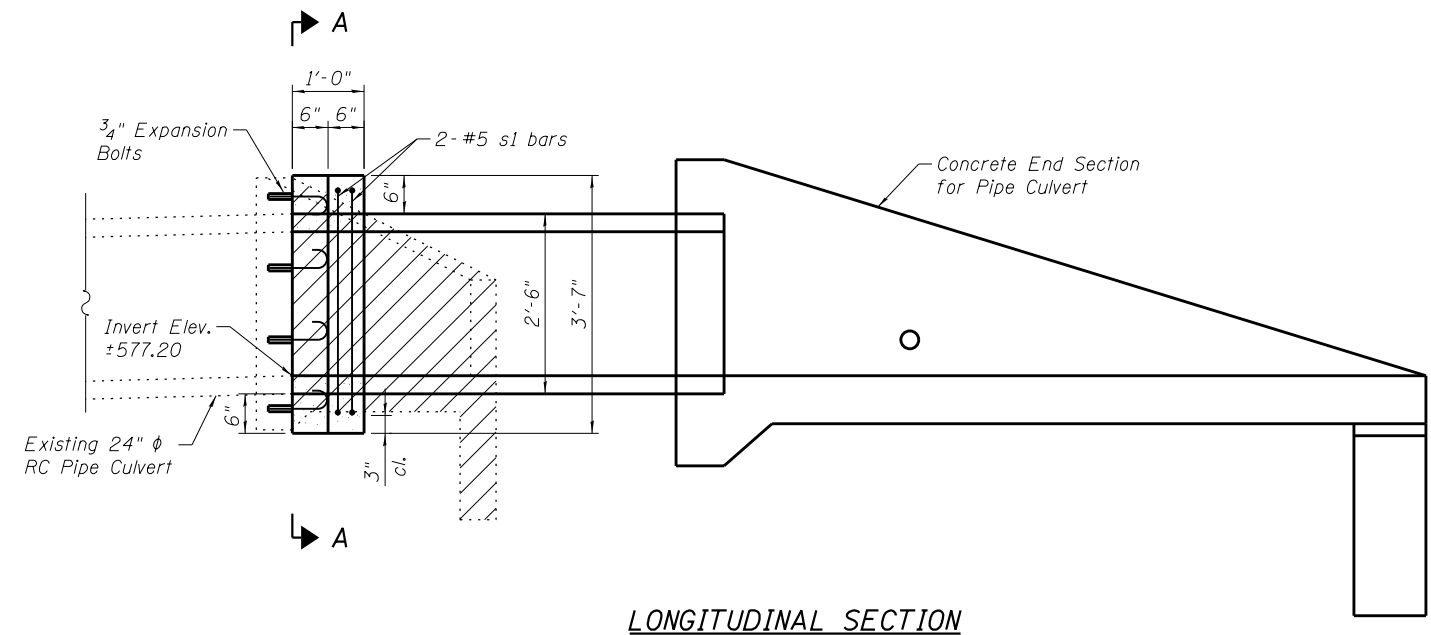
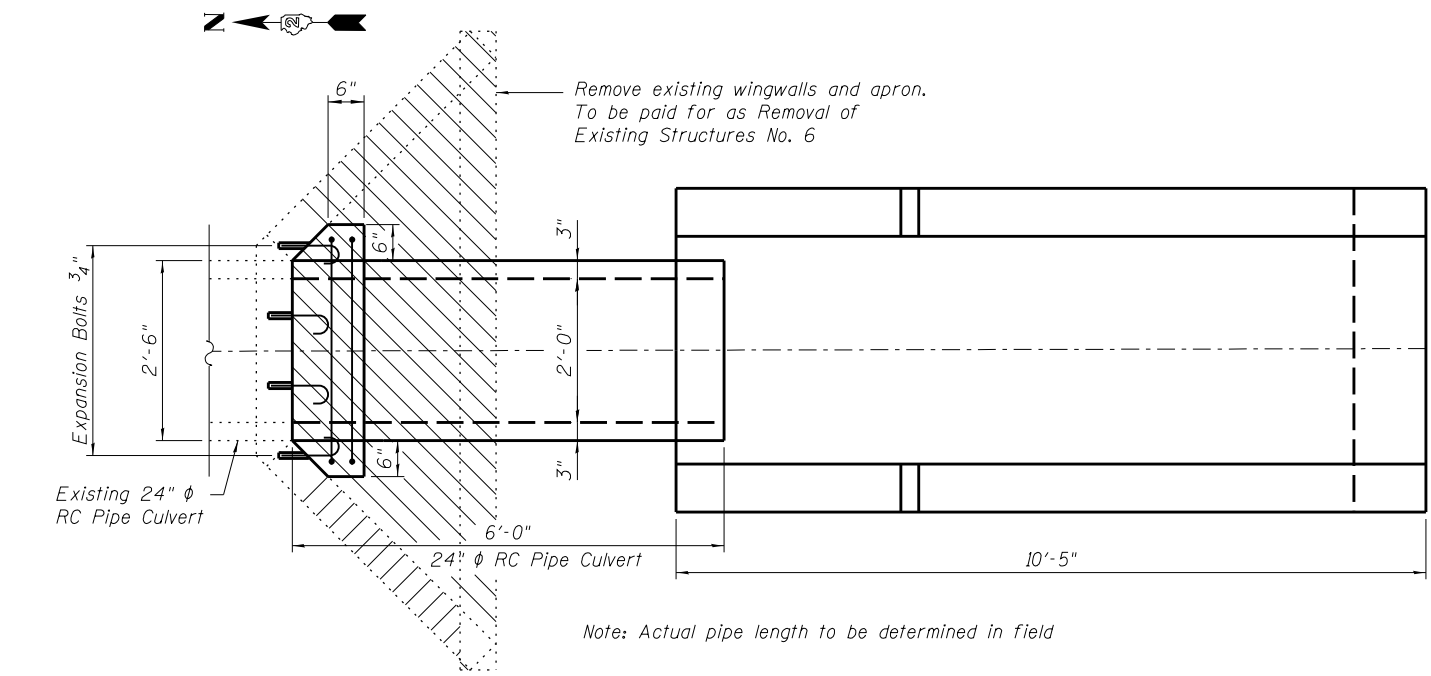


FILE NAME = W:\Projects\2010\100120 PTB 157\25\cadd\Structural\Drawn\03 IL 92 Culverts\Station\010+50\Final Submittal 13.0320\1010+50.00-64H1-002-DTL.dgn



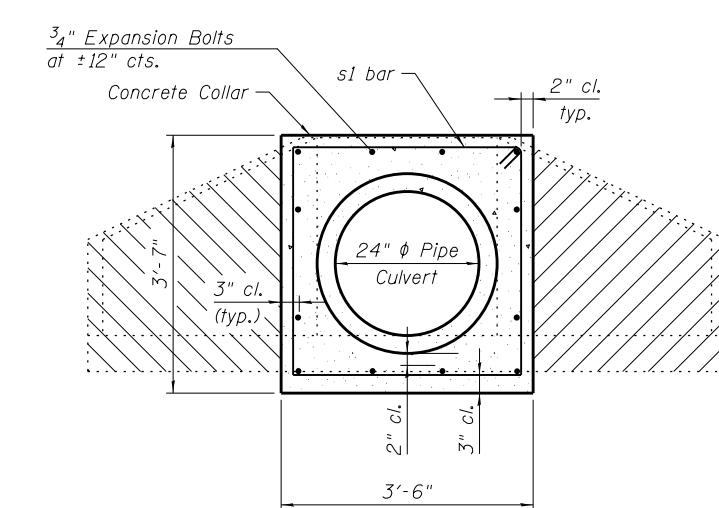
LONGITUDINAL SECTION



PLAN

Indicates Concrete Removal

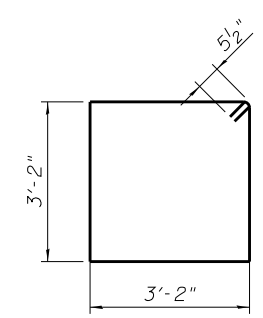
Remove only that portion of the existing wingwalls that extends past the proposed collar for ease of construction or as deemed necessary by the engineer.



SECTION A-A

BILL OF MATERIAL

Bar	No.	Size	Length	Shape	
s1	2	#5	13'-7"		
DESCRIPTION				UNIT	QTY.
Reinforcement Bars				Pound	30
Expansion Bolts 3/4 Inch				Each	12
Concrete Collar				Cu. Yd.	0.3



BAR s1

NOTES

- Prior to the start of work, the Contractor shall verify existing field conditions and notify the Engineer of any discrepancies that could limit the fitup of the concrete collar as detailed.
- Expansion bolts shall consist of self-drilling expansion shield and 3/4" hooked bar. The hooked bar shall extend 9" minimum into concrete collar and 4" minimum into headwall.
- The Contractor shall remove additional portions of the wingwalls as required to allow the new pipe culvert to fit tightly against the existing headwall, or may provide suitable banding or other approved method to prevent concrete from entering the interior of the pipe culvert.
- The culvert shall be backfilled in accordance with the Standard Specifications.